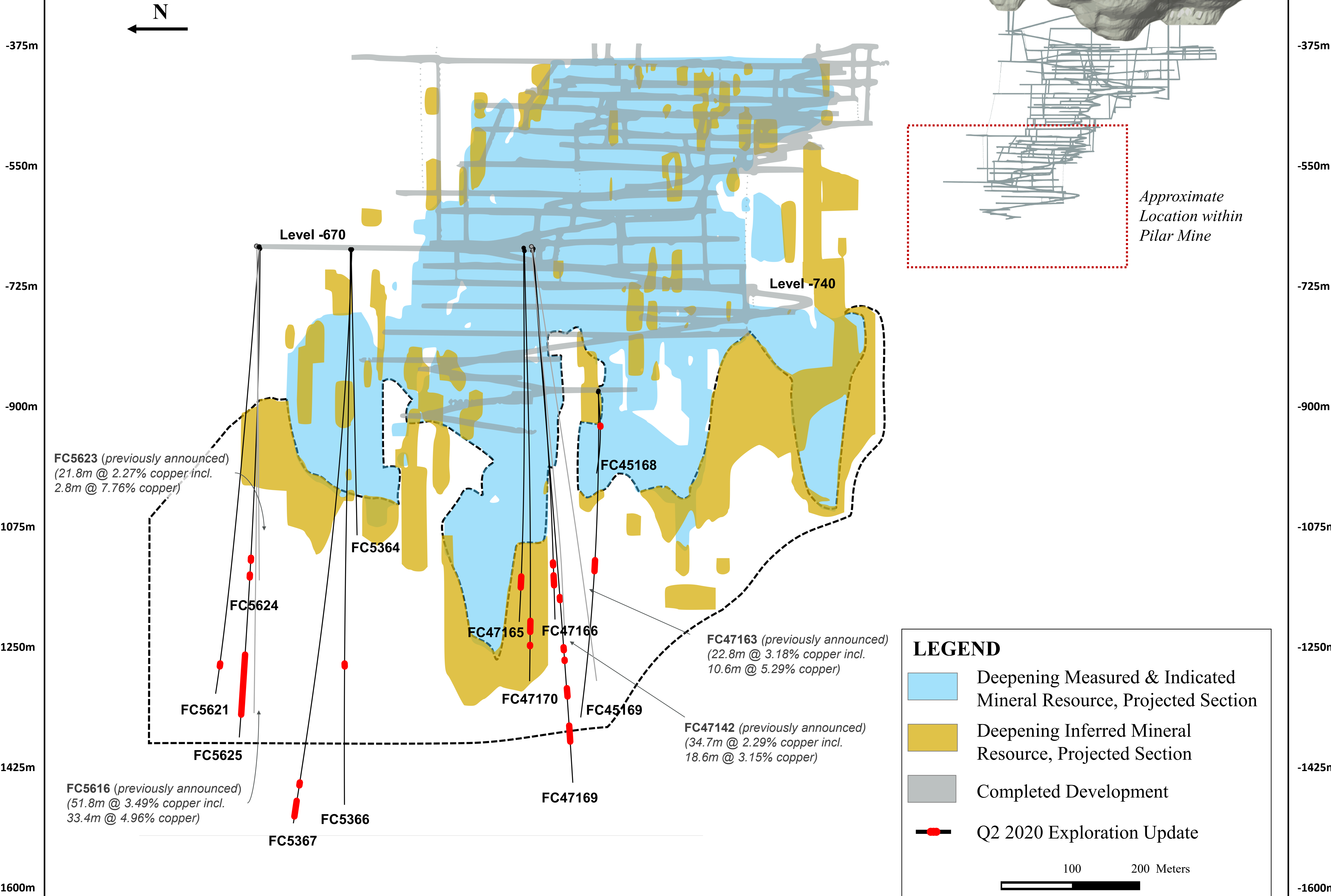


Figure 1

Deepening Extension, North-South Long Section



LEGEND

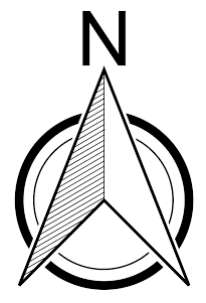
- Deepening Measured & Indicated Mineral Resource, Projected Section
- Deepening Inferred Mineral Resource, Projected Section
- Completed Development
- Q2 2020 Exploration Update

100 200 Meters

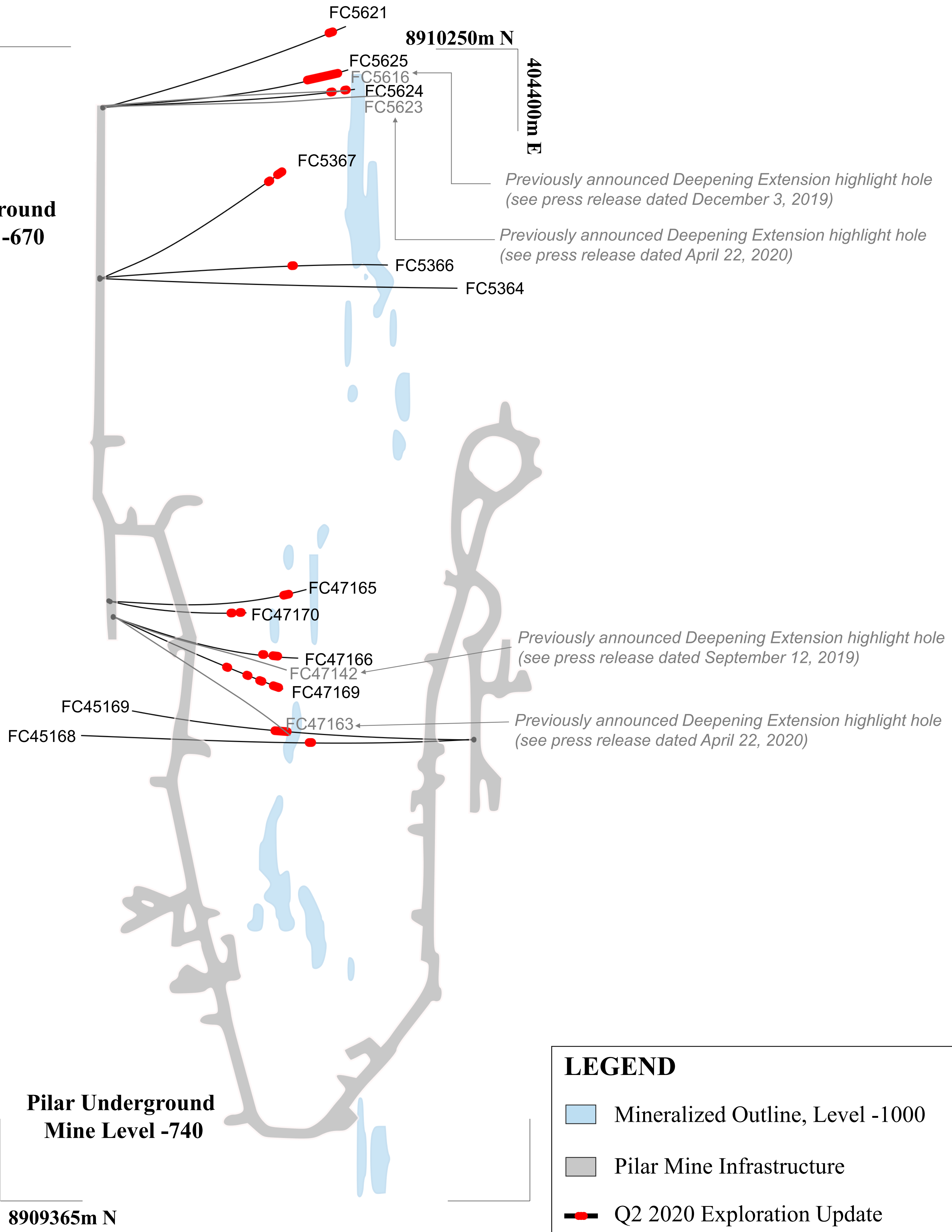
Mineral resource outline inclusive of mineral reserves. Mineral resources which are not mineral reserves do not have demonstrated economic viability. Please refer to the Company's Vale do Curaçá Property Technical Report dated November 25, 2019 for additional technical and scientific information related to the Pilar Mine. Previously announced drilling as further detailed in the Company's press release dated September 12, 2019, December 3, 2019 and April 22, 2020.

Figure 2

Pilar Mine, Deepening Extension (Drilling From Level -670 and -740)



**Pilar Underground
Mine Level -670**

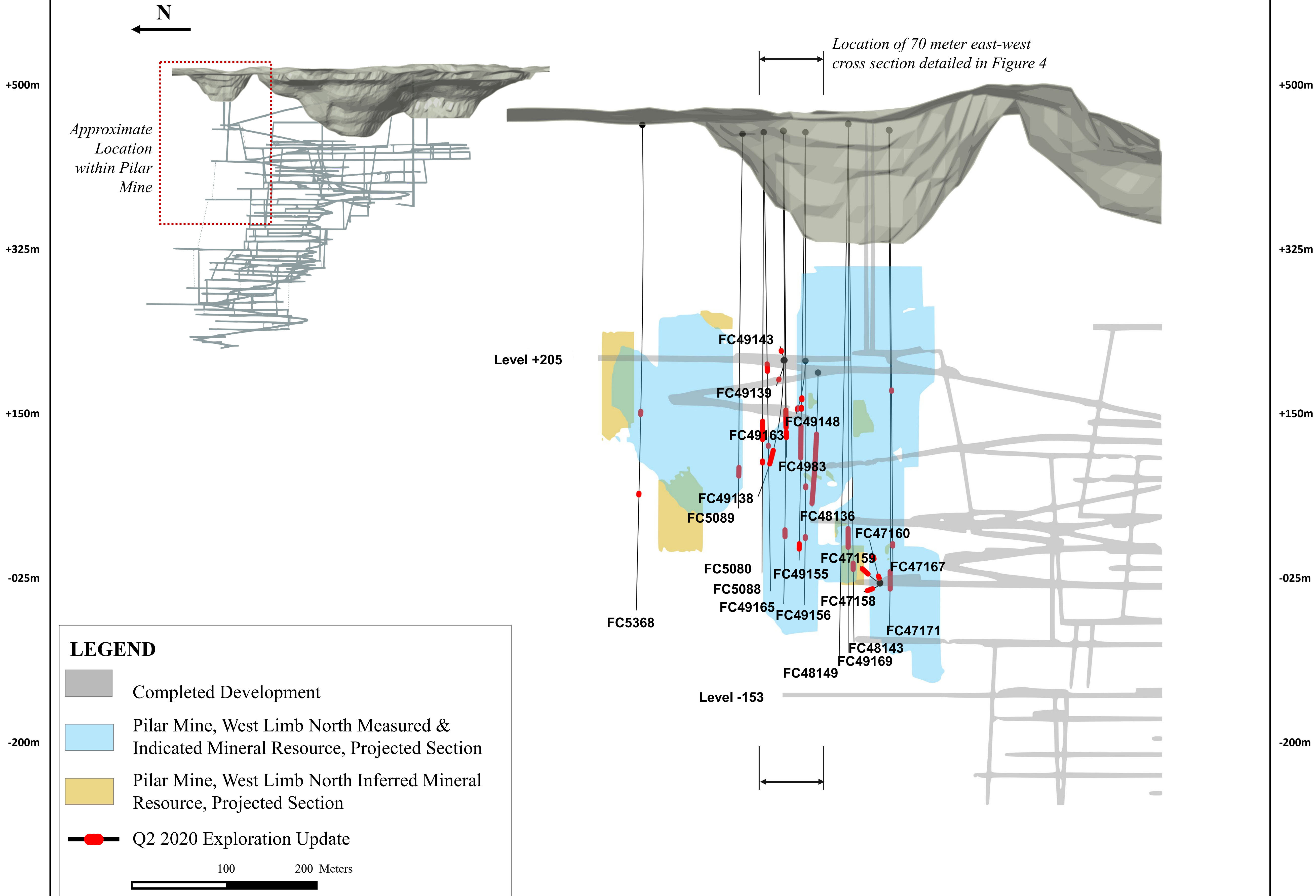


LEGEND

- Mineralized Outline, Level -1000
- Pilar Mine Infrastructure
- Q2 2020 Exploration Update



Figure 3 West Limb North Zone, North-South Long Section



Mineral resource outline inclusive of mineral reserves. Mineral resources which are not mineral reserves do not have demonstrated economic viability. Please refer to the Company's Vale do Curaçá Property Technical Report dated November 25, 2019 for additional technical and scientific information related to the Pilar Mine.

Figure 4

West Limb North Zone, East-West Cross Section (View looking North)



+500m

+500m

+325m

+325m

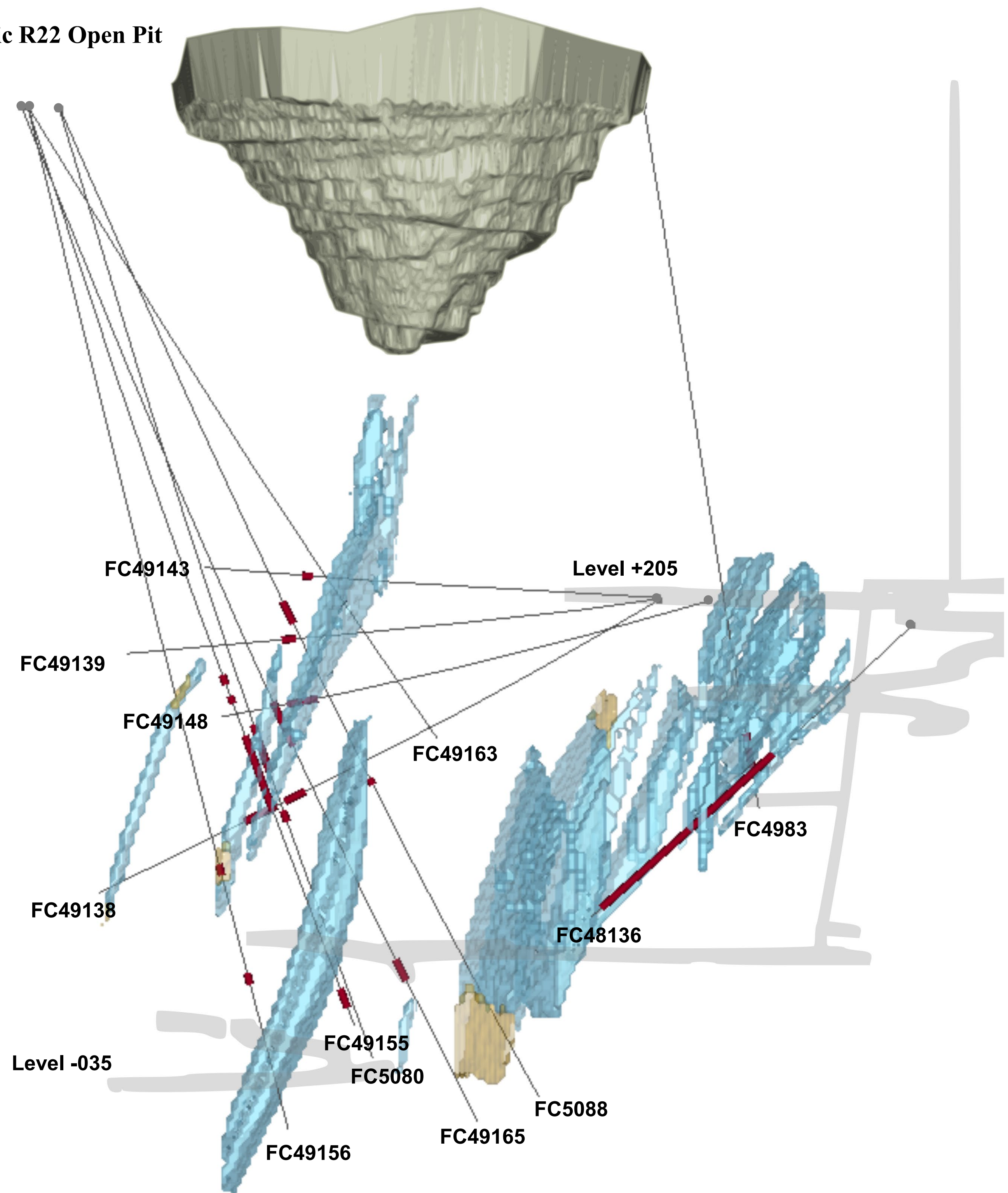
+150m

+150m

-025m

-025m

Historic R22 Open Pit



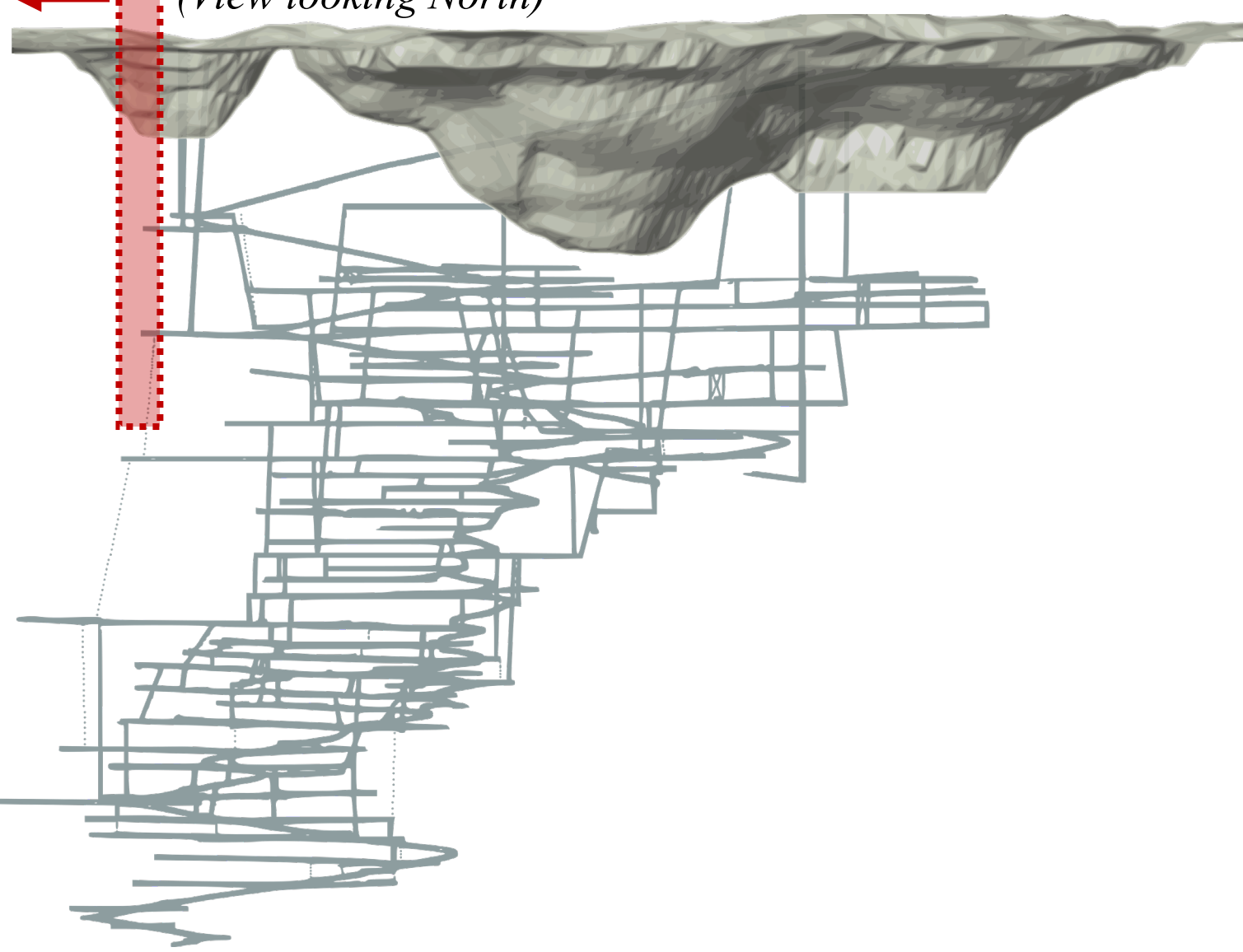
LEGEND

- Completed Development
- Pilar Mine, West Limb North Measured & Indicated Mineral Resource, Projected Section
- Pilar Mine, West Limb North Inferred Mineral Resource, Projected Section
- Q2 2020 Exploration Update

100 200 Meters



Approximate Location of Cross-Section Shown
(View looking North)



Mineral resource outline inclusive of mineral reserves. Mineral resources which are not mineral reserves do not have demonstrated economic viability. Please refer to the Company's Vale do Curaçá Property Technical Report dated November 25, 2019 for additional technical and scientific information related to the Pilar Mine.

Figure 5 West Limb North Zone, Plan View

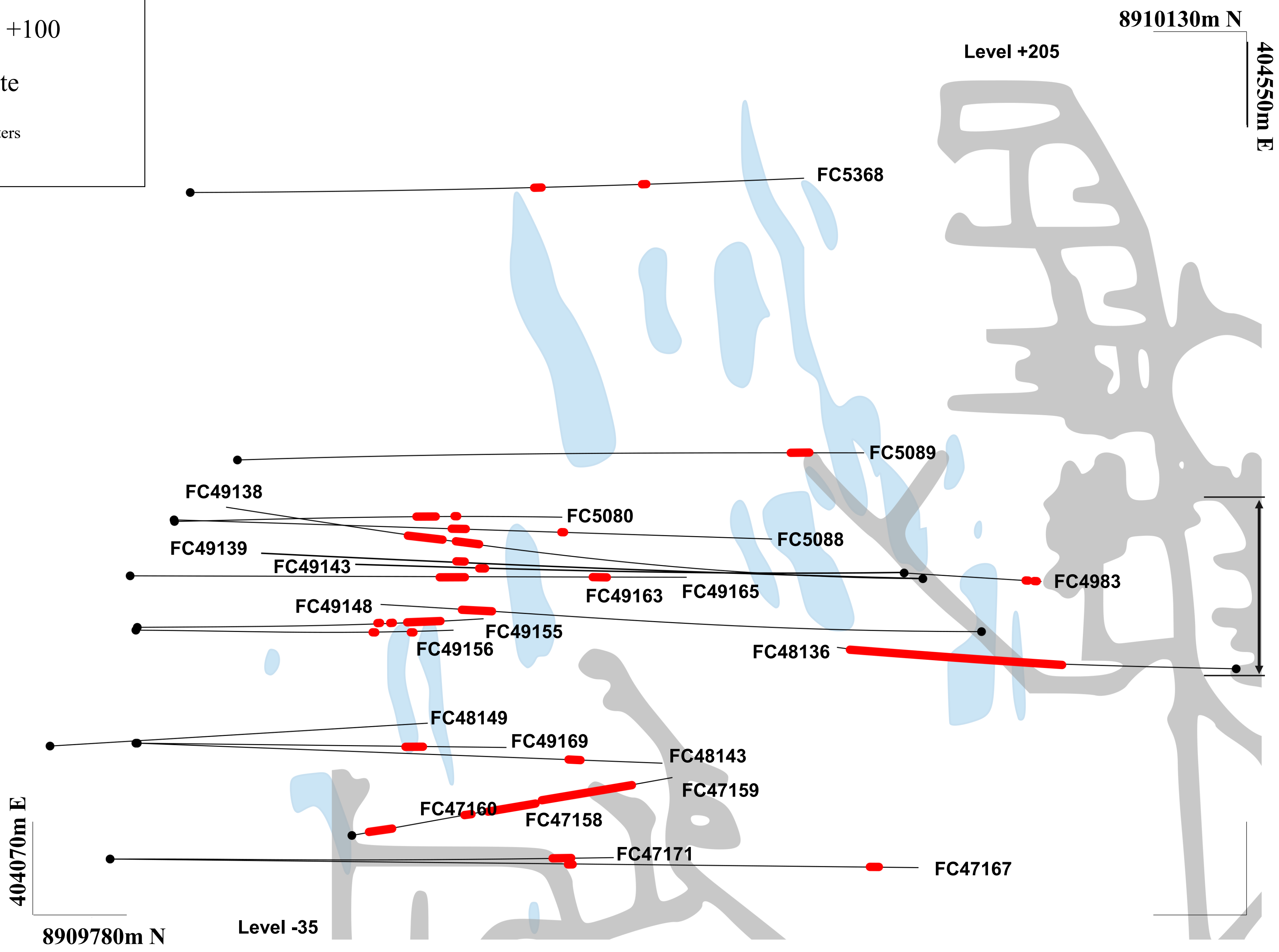


LEGEND

- Pilar Mine Infrastructure
- Mineralized Outline, Level +100
- Q2 2020 Exploration Update

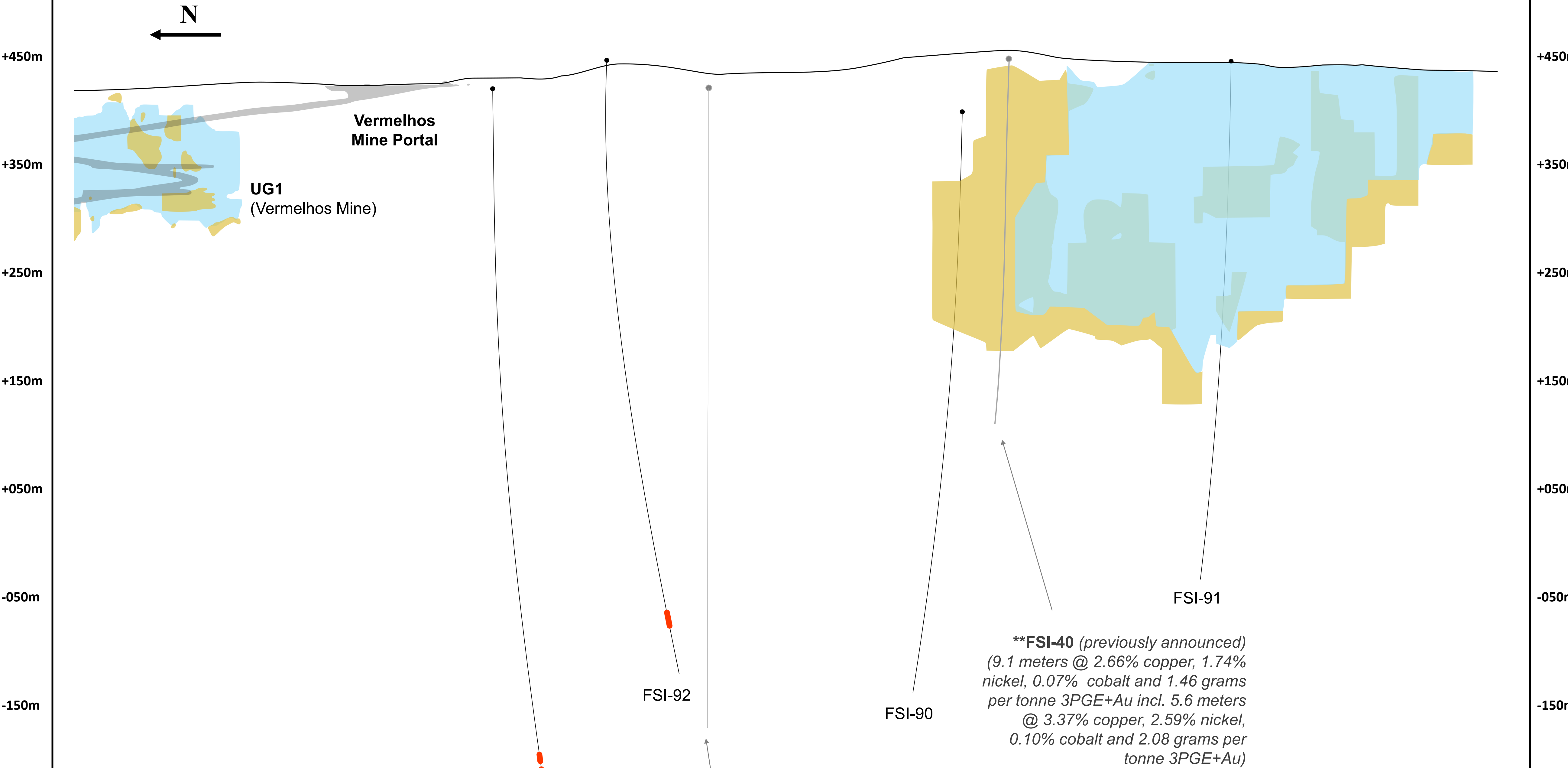
50 100 Meters

Location of 70 meter
east-west cross section
detailed in Figure 4



Mineral resource outline inclusive of mineral reserves. Mineral resources which are not mineral reserves do not have demonstrated economic viability. Please refer to the Company's Vale do Curaçá Property Technical Report dated November 25, 2019 for additional technical and scientific information related to the Pilar Mine.

Figure 6 Siriema, North-South Long Section



****FSI-40 (previously announced)**
 (9.1 meters @ 2.66% copper, 1.74% nickel, 0.07% cobalt and 1.46 grams per tonne 3PGE+Au incl. 5.6 meters @ 3.37% copper, 2.59% nickel, 0.10% cobalt and 2.08 grams per tonne 3PGE+Au)

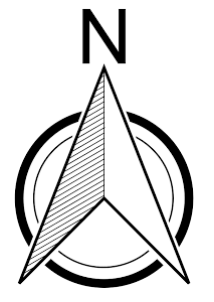
****FSI-89 (previously announced)**
 (6.0 meters @ 2.21% copper, 0.03% nickel incl. 3.0 meters @ 3.12% copper, 0.04% nickel and 3.0 meters at 1.04% copper, 0.02% nickel; gold and platinum group element assays not yet released)

LEGEND

- Siriema and Vermelhos Mine (UG1) Measured & Indicated Mineral Resource, Projected Section
- Siriema and Vermelhos Mine (UG1) Inferred Mineral Resource, Projected Section
- Q2 2020 Exploration Update

100 200 Meters

Mineral resource outline inclusive of mineral reserves. Mineral resources which are not mineral reserves do not have demonstrated economic viability. 3PGE+Au indicates sum of palladium, platinum, rhodium and gold assays in grams per tonne ("gpt"). Please refer to the Company's press release dated December 3, 2019 and April 22, 2020 for additional information on previously announced results. Please refer to the Company's Vale do Curaçá Property Technical Report dated November 25, 2019 for additional technical and scientific information related to Siriema.



8970815m N

397150m E

Primary Ramp

Vermelhos Main Orebodies
Current Mineral Reserve Outline

UG1

Portal

FSI-93

FSI-92

FSI-89

*Previously announced
Siriema conduit highlight hole
(see press release dated April
22, 2020)*

FSI-90


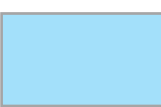


*Previously announced Siriema
"Keel Zone" highlight hole
(see press release dated
December 3, 2019)*

FSI-40

Siriema

FSI-91

LEGEND

-  Surface Projection of Current Mineral Reserve, Vermelhos Mine
-  Surface Projection of Siriema Measured & Indicated Mineral Resource
-  Surface Projection of Siriema Inferred Mineral Resource
-  Q2 2020 Exploration Update

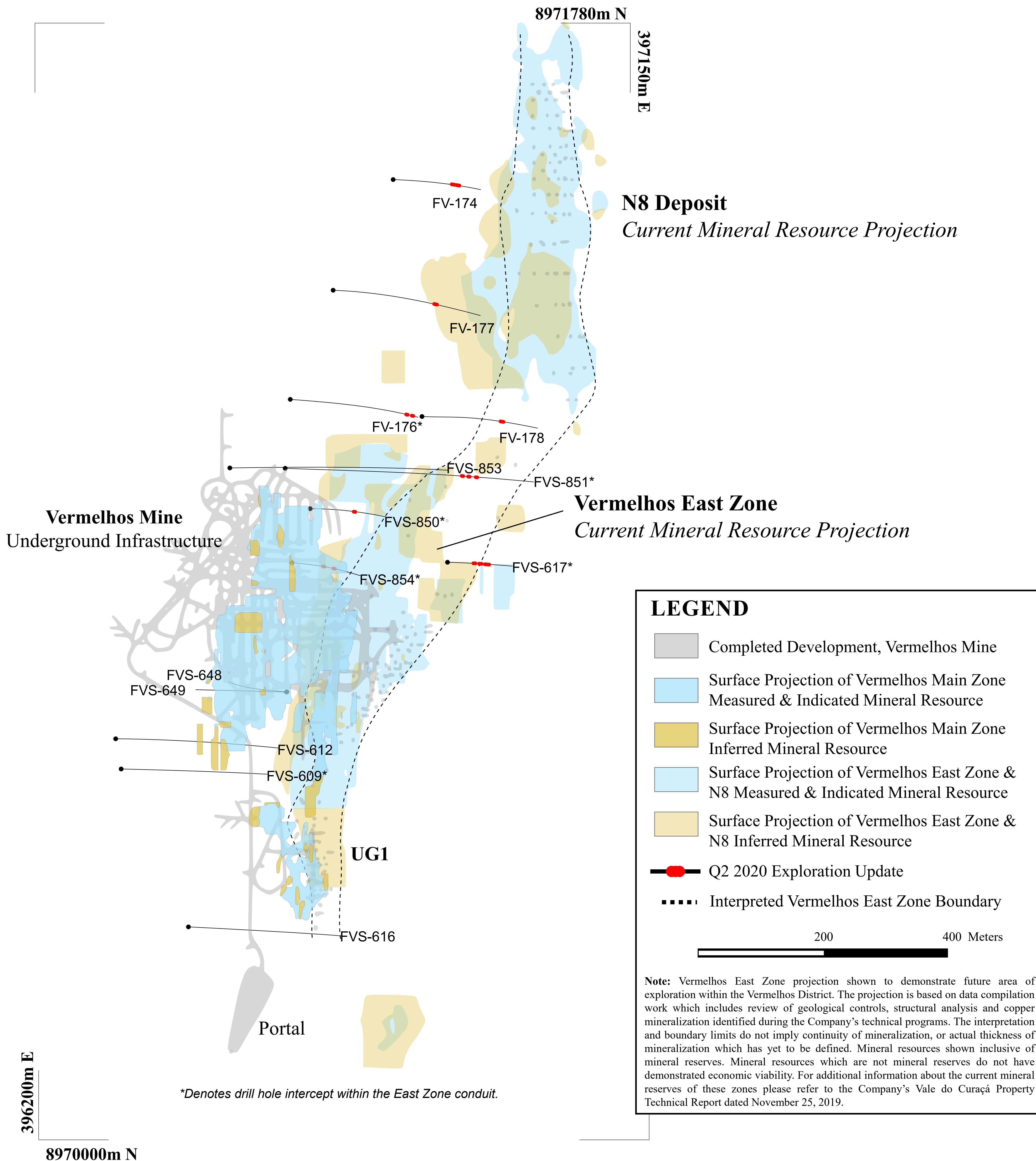


Note

Mineral resource outline shown inclusive of mineral reserves. Mineral resources which are not mineral reserves do not have demonstrated economic viability. For additional scientific information related to the Vermelhos Mine and Siriema, please refer to the Company's Vale do Curaçá Property Technical Report dated November 25, 2019.

395900m E

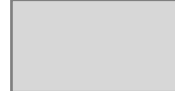
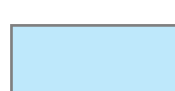

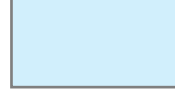



8969090m N



N8 Deposit
Current Mineral Resource Projection

Vermelhos East Zone
Current Mineral Resource Projection

LEGEND

-  Completed Development, Vermelhos Mine
-  Surface Projection of Vermelhos Main Zone Measured & Indicated Mineral Resource
-  Surface Projection of Vermelhos Main Zone Inferred Mineral Resource
-  Surface Projection of Vermelhos East Zone & N8 Measured & Indicated Mineral Resource
-  Surface Projection of Vermelhos East Zone & N8 Inferred Mineral Resource
-  Q2 2020 Exploration Update
-  Interpreted Vermelhos East Zone Boundary

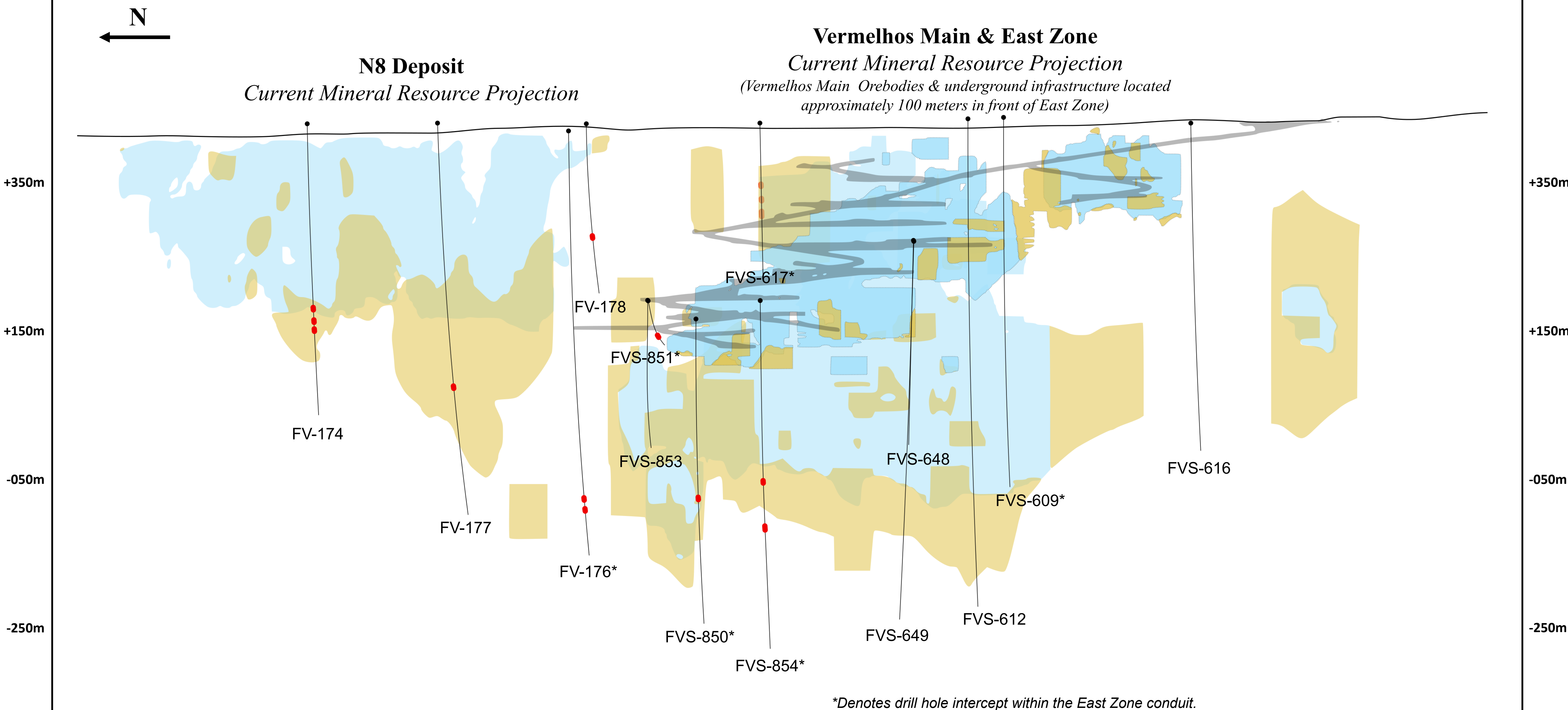
200 400 Meters

Note: Vermelhos East Zone projection shown to demonstrate future area of exploration within the Vermelhos District. The projection is based on data compilation work which includes review of geological controls, structural analysis and copper mineralization identified during the Company's technical programs. The interpretation and boundary limits do not imply continuity of mineralization, or actual thickness of mineralization which has yet to be defined. Mineral resources shown inclusive of mineral reserves. Mineral resources which are not mineral reserves do not have demonstrated economic viability. For additional information about the current mineral reserves of these zones please refer to the Company's Vale do Curaçá Property Technical Report dated November 25, 2019.

*Denotes drill hole intercept within the East Zone conduit.


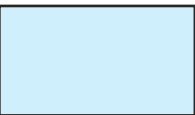

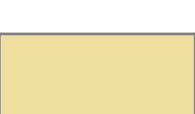


Figure 9

Vermelhos Main/East Zone & N8 Deposit, North-South Long Section



*Denotes drill hole intercept within the East Zone conduit.

LEGEND

- | | | | |
|---|--|---|---|
|  | Completed Development, Vermelhos Mine |  | Vermelhos East Zone & N8 Deposit Measured & Indicated Mineral Resource, Projected Section |
|  | Vermelhos Main Zone Measured & Indicated Mineral Resource, Projected Section |  | Vermelhos East Zone & N8 Deposit Inferred Mineral Resource, Projected Section |
|  | Vermelhos Main Zone Inferred Mineral Resource, Projected Section |  | Q2 2020 Exploration Update |

200 400 Meters

Figure 10
NX Gold Mine, Plan View

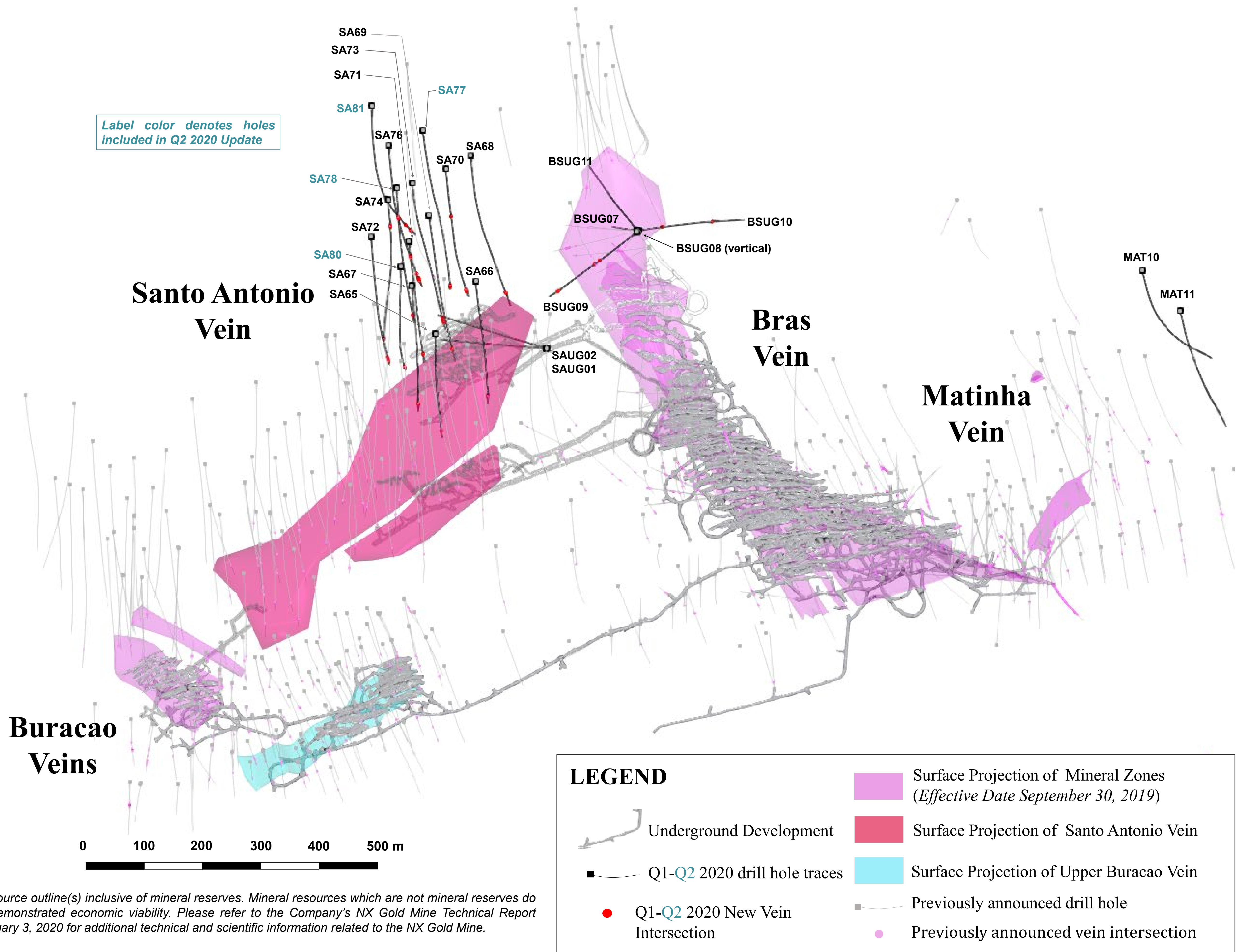
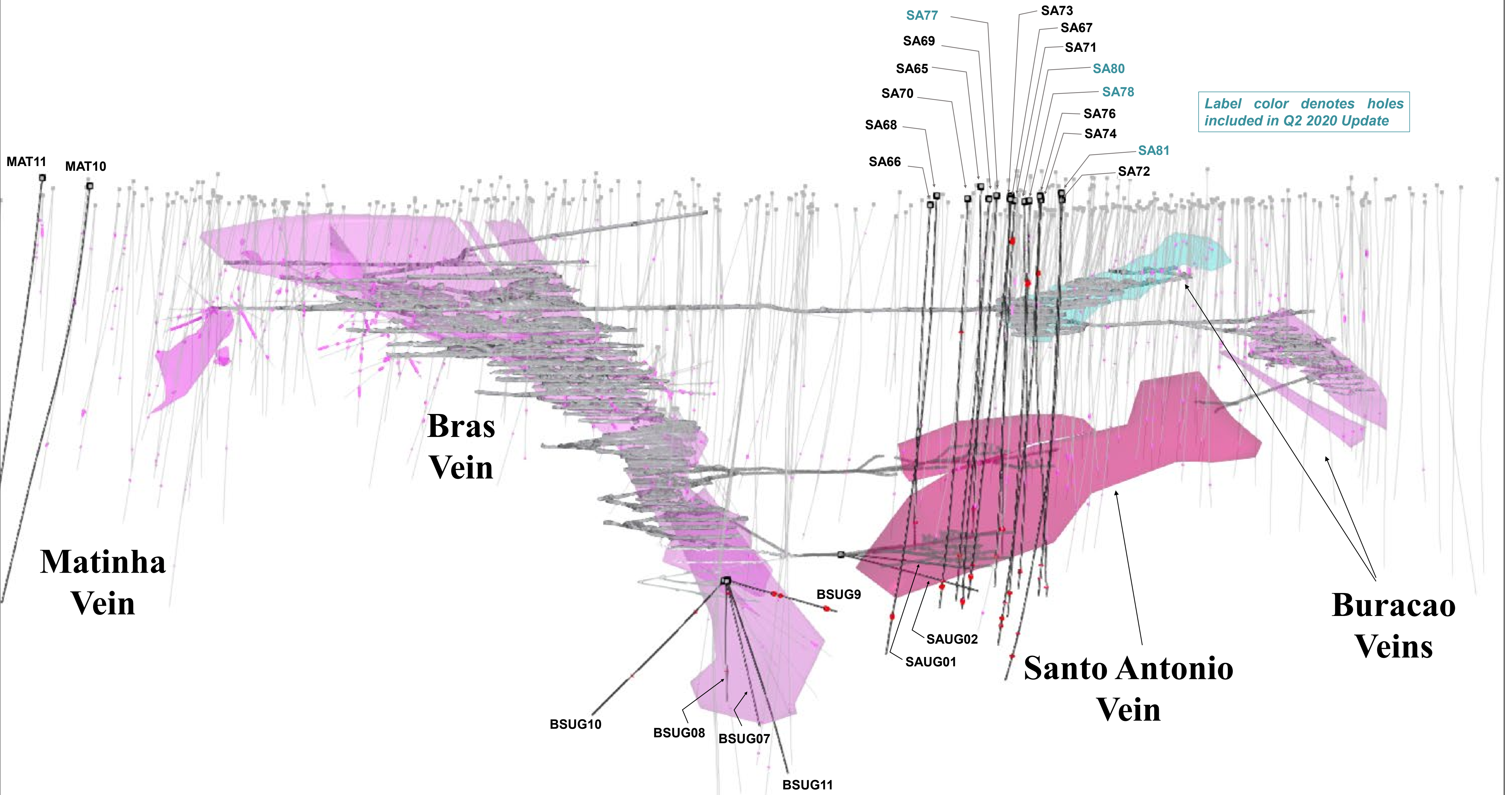


Figure 11
NX Gold Mine, East-West Vertical Long Section

E
←



Label color denotes holes included in Q2 2020 Update

LEGEND

- Vertical Projection of Mineral Zones (Effective Date September 30, 2019)
- Vertical Projection of Santo Antonio Vein
- Vertical Projection of Upper Buracao Vein
- Underground Development
- Q1-Q2 2020 drill hole traces
- Previously announced drill hole
- Q1-Q2 2020 New Vein Intersection
- Previously announced vein intersection

Mineral resource outline(s) inclusive of mineral reserves. Mineral resources which are not mineral reserves do not have demonstrated economic viability. Please refer to the Company's NX Gold Mine Technical Report dated February 3, 2020 for additional technical and scientific information related to the NX Gold Mine.