

396300 396400 396500 396600 396700 396800 396900 397000

ERO
COPPER

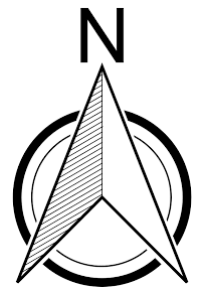


Figure 1

Vermelhos, Near-Mine Exploration

Vermelhos Main Orebodies
Current Mineral Reserve Outline

Toboggan

Sombrero

Primary Ramp

UG 1

Auxiliary Ramp

Interpreted East Zone Boundary Limits

0 12.5 25 50 75 100 Meters

LEGEND

Completed Development

Planned Development

Q1 2019 Exploration Update

Vermelhos Cu Intercepts

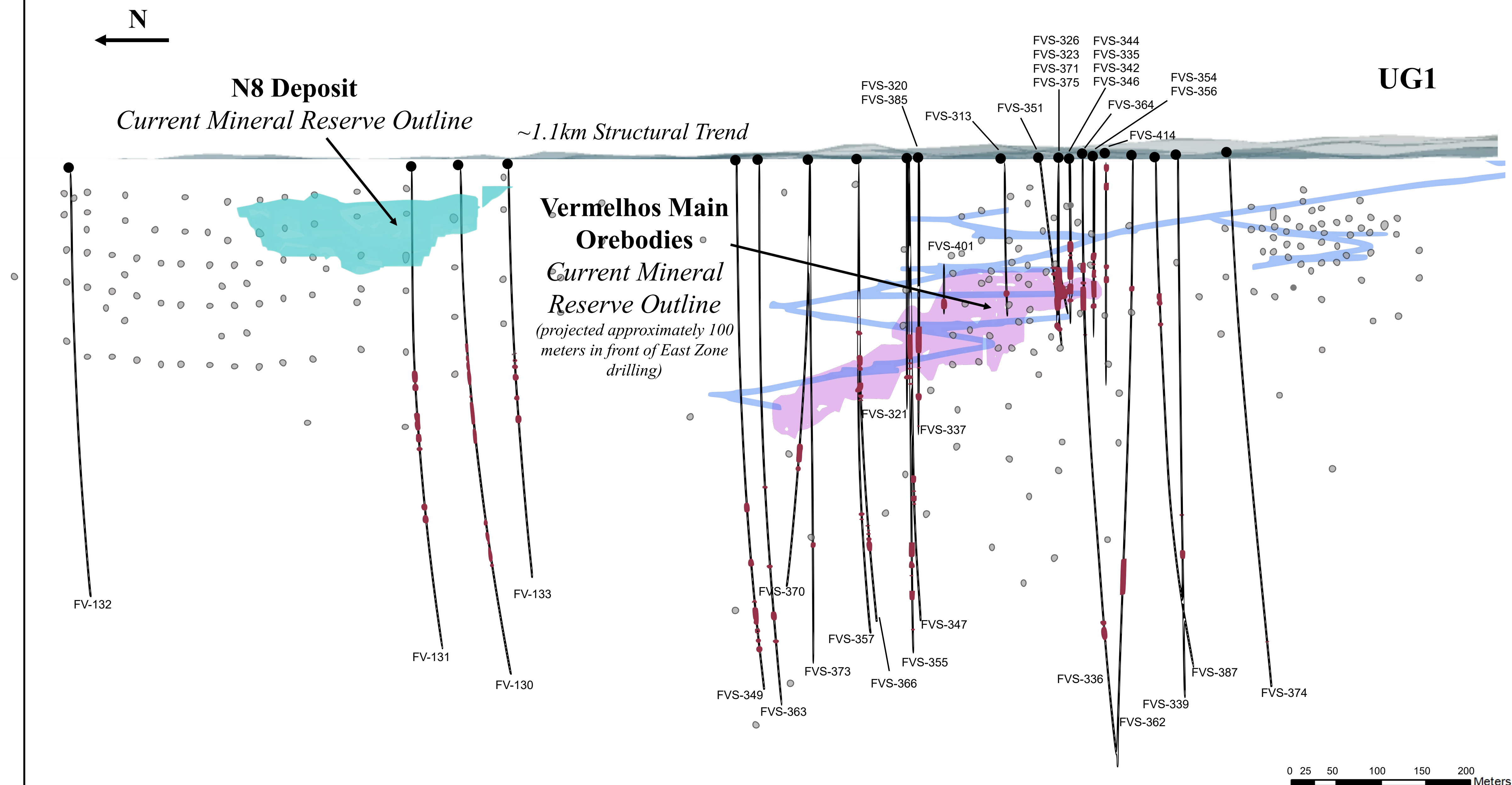
Surface Projection of Current Mineral Reserve, Vermelhos Main Orebodies

Vermelhos East Zone Interpretation

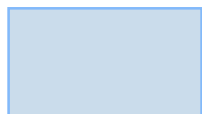




Identified Pierce Point within Interpreted East Zone Boundary Limits

Special Note: Vermelhos East Zone projection shown to demonstrate future area of exploration within the Vermelhos District. The projection is based on data compilation work which includes review of geological controls, structural analysis and copper mineralization identified during the Company's technical programs. The interpretation and boundary limits do not imply continuity of mineralization, or actual thickness of mineralization that has yet to be defined. For additional scientific information related to the Vermelhos Mine, please refer to the Company's Vale do Curaçá Property Technical Report dated October 17, 2018.

396300 396400 396500 396600 396700 396800 396900 397000



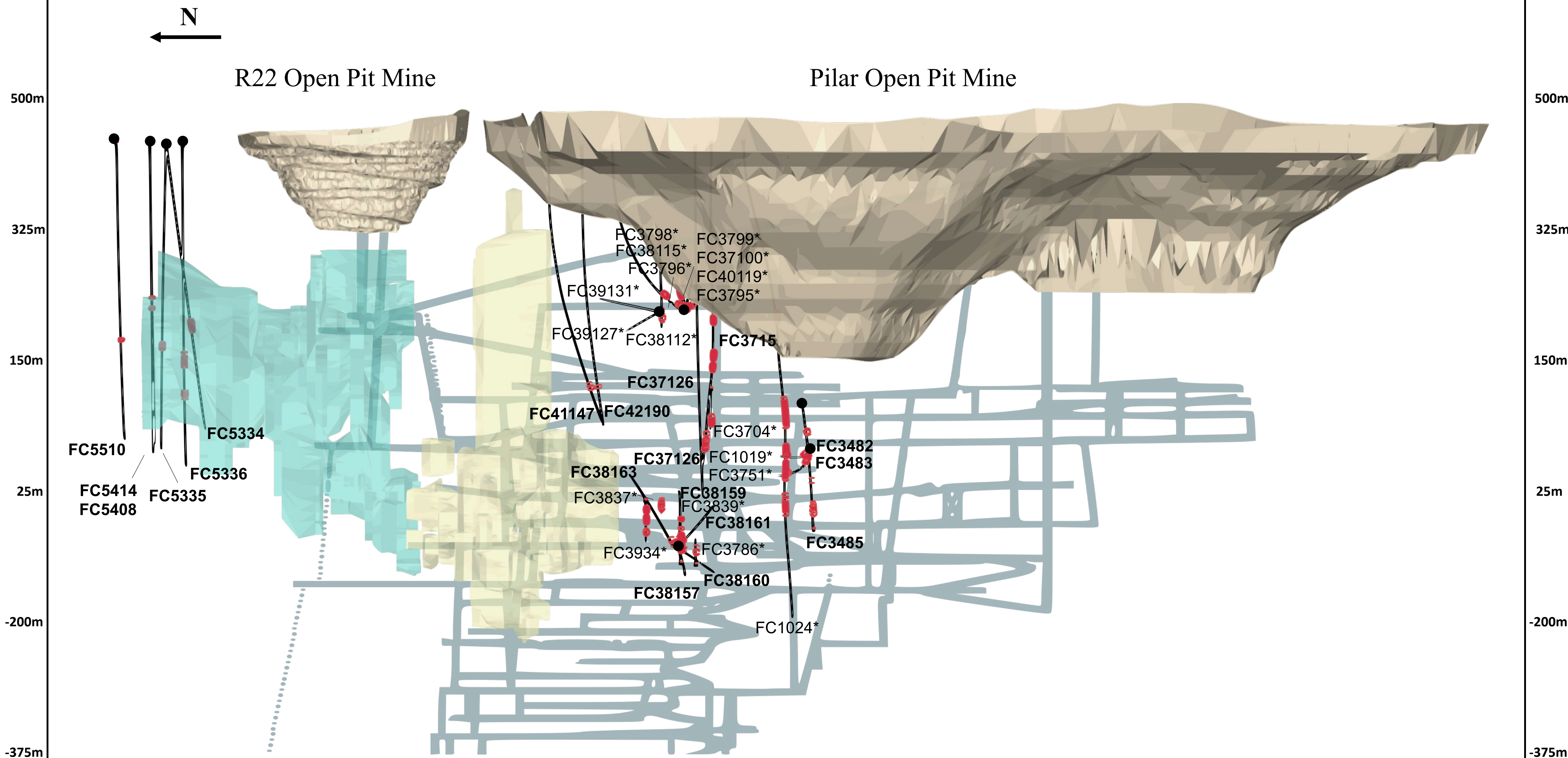
LEGEND

- | | |
|--|---|
|  Completed Development |  Projected Current Mineral Reserve, Vermelhos Main Orebodies |
|  Q1 2019 Exploration Update Intercepts |  Projected Current Mineral Reserve, Vermelhos West |
|  Identified Pierce Point within Interpreted East Zone Boundary Limits | |

Special Note: Vermelhos East Zone projection shown to demonstrate future area of exploration within the Vermelhos District. The projection is based on data compilation work which includes review of geological controls, structural analysis and copper mineralization identified during the Company's technical programs. The interpretation and boundary limits do not imply continuity of mineralization, or actual thickness of mineralization that has yet to be defined. For additional scientific information related to the Vermelhos Mine, please refer to the Company's Vale do Curaçá Property Technical Report dated October 17, 2018.

Figure 3

West Limb, North-South Long Section



LEGEND

- P1P2W Mineral Resource Outline (West Limb)
Effective Date August 1, 2018
- R22 Mineral Resource Outline (West Limb)
Effective Date August 1, 2018
- Completed Development
- Q1 2019 West Limb Intercept

Notes

(*) Indicates validated historic QA/QC drill hole

Extent of West Limb intercepts shown in cross-section demonstrate future area of exploration within the Pilar Mine and are shown for discussion and ease of interpretation only. The extended area is based on drill data and review of geological controls and structural analysis identified during the Company's technical programs. The interpretation and lateral extent shown does not imply continuity of mineralization, or actual thickness of mineralization that has yet to be defined. For additional scientific information related to the Pilar Mine, please refer to the Company's Vale do Curaçá Property Technical Report dated October 17, 2018. Section numbers are indicated in the first two numerical digits of each Hole ID. Each section is 45 meters apart in a north-south direction.

Figure 4

Deepening Extension, North-South Long Section



-375m

-550m

-725m

-900m

-1075m

-375m

-550m

-725m

-900m

-1075m

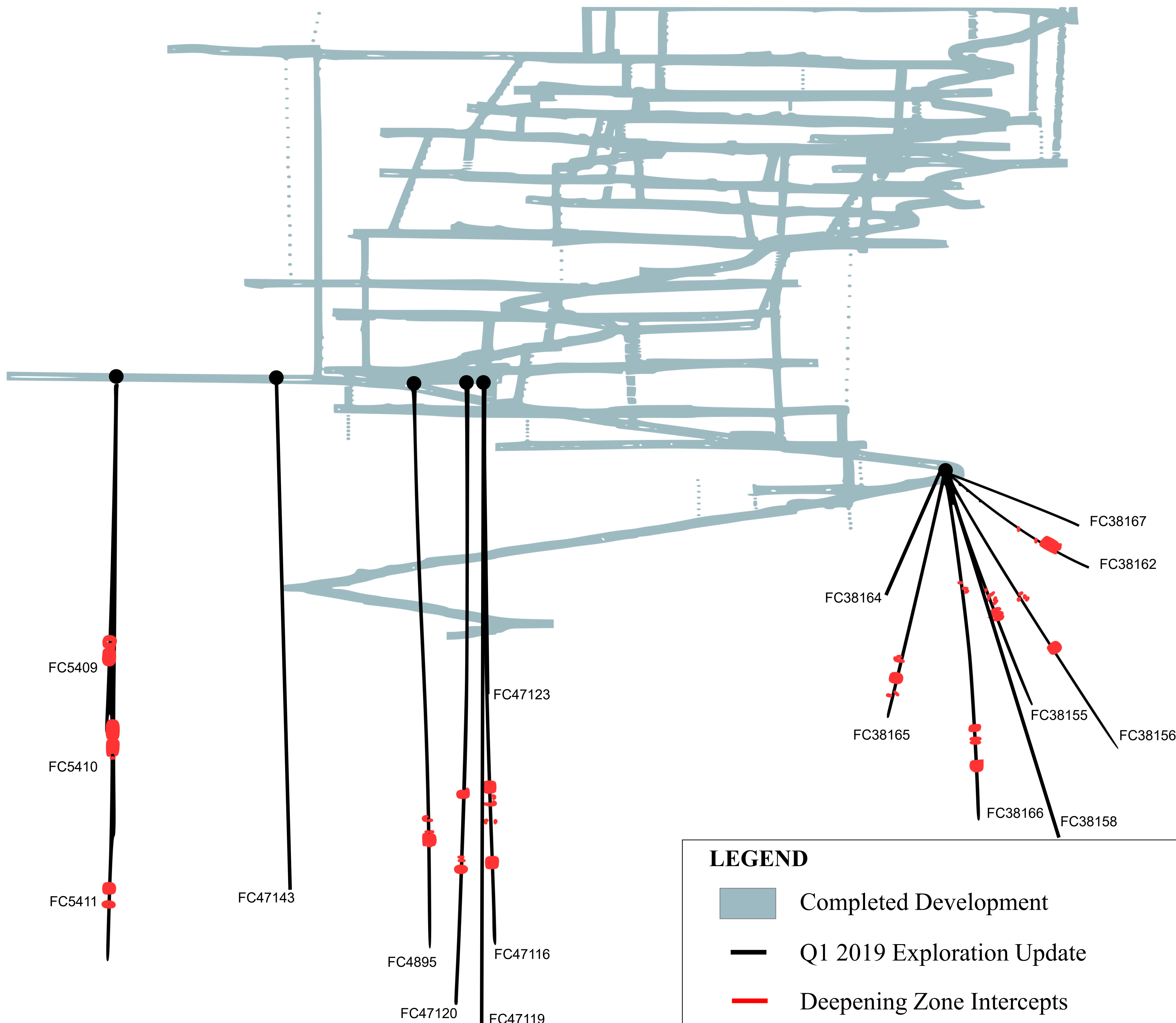


Figure 5
NX Gold Mine, Plan View

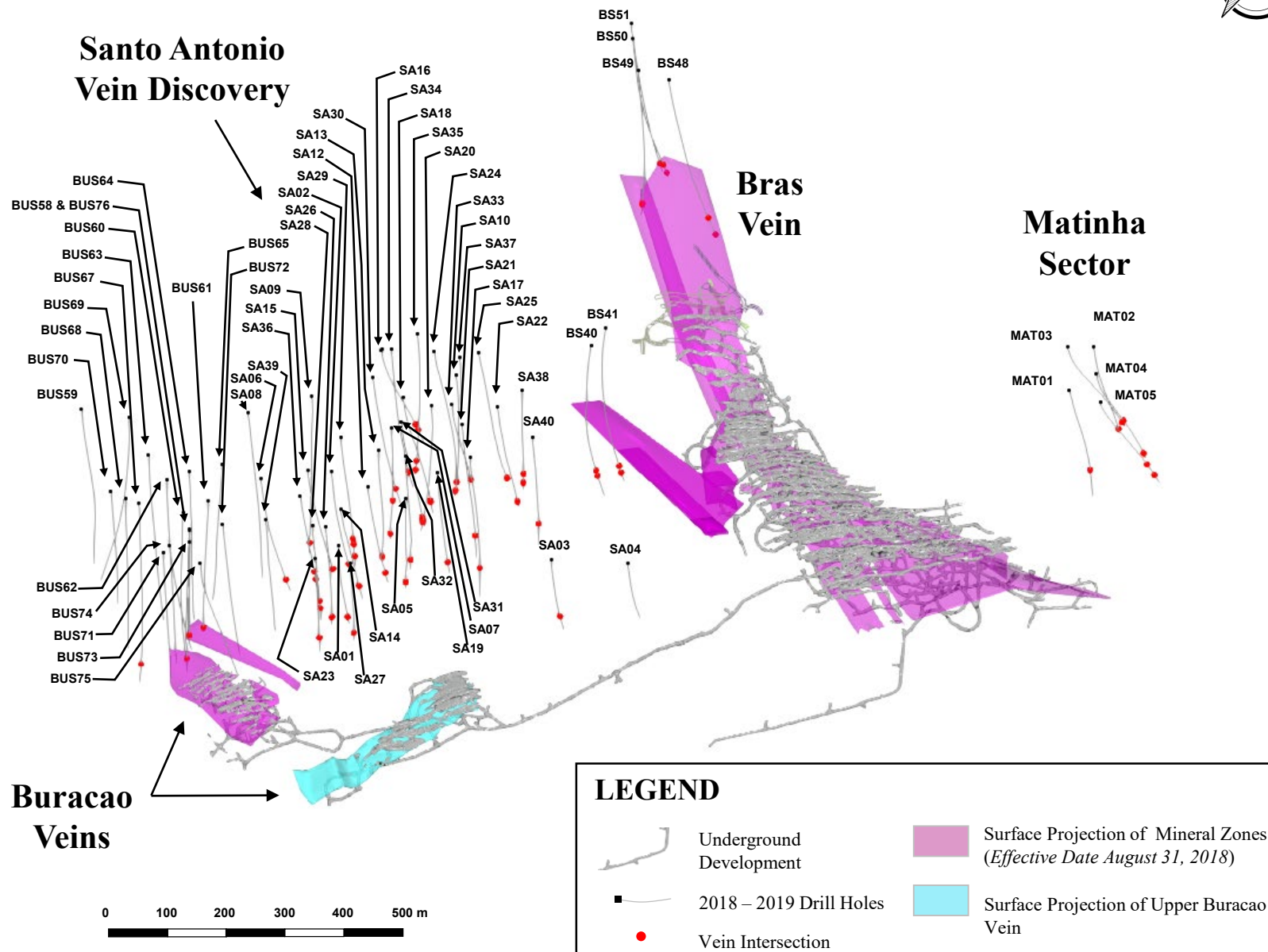


Figure 6
NX Gold Mine, East-West Long Section

