



Figure 1 - Plan view showing one of the ground control points (GCPs) used for the PhotoSat surveying.

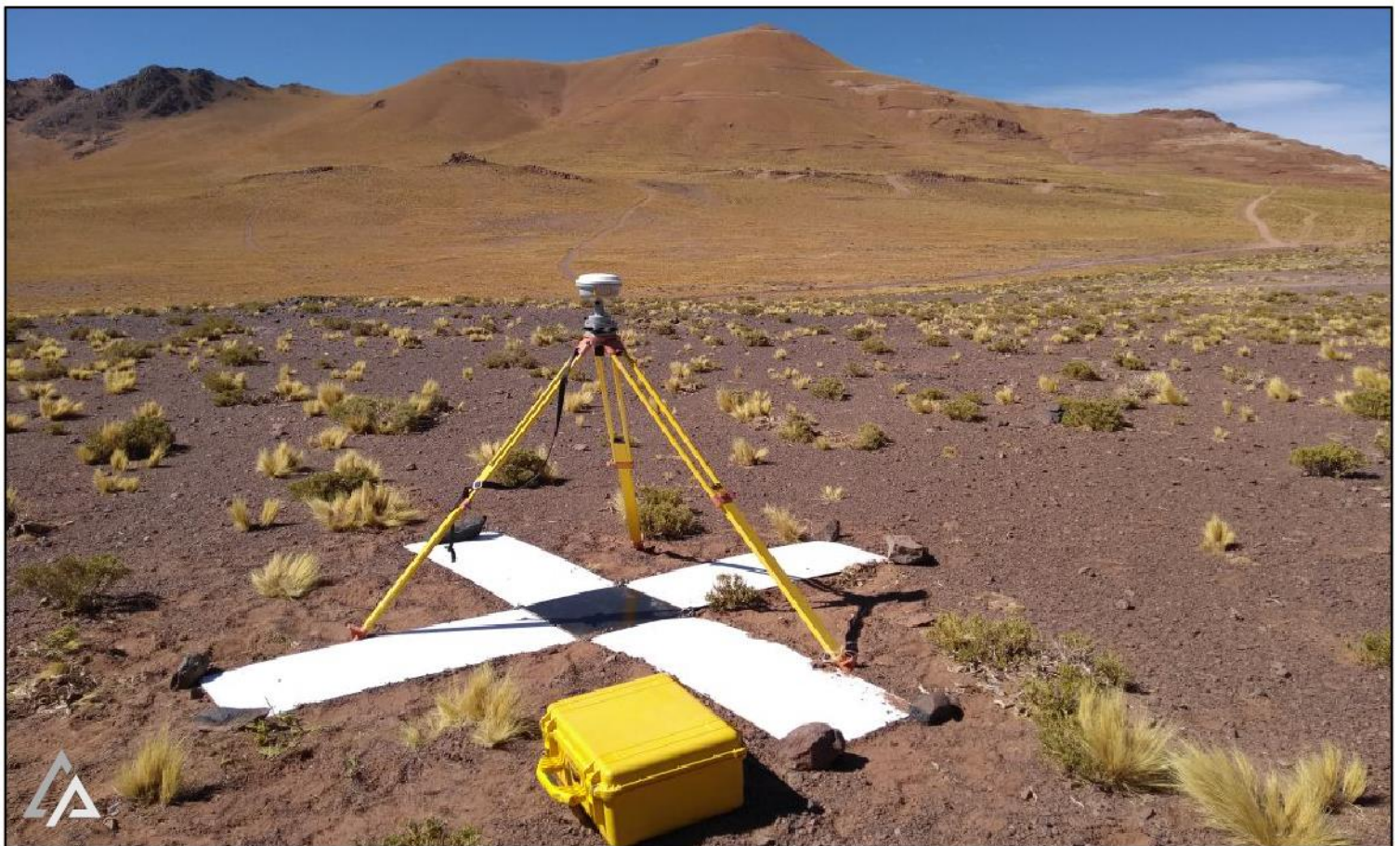


Figure 2 - GCP set up and survey. Photo is looking southeast with Oculito and Laderas in the background.

© DigitalGlobe

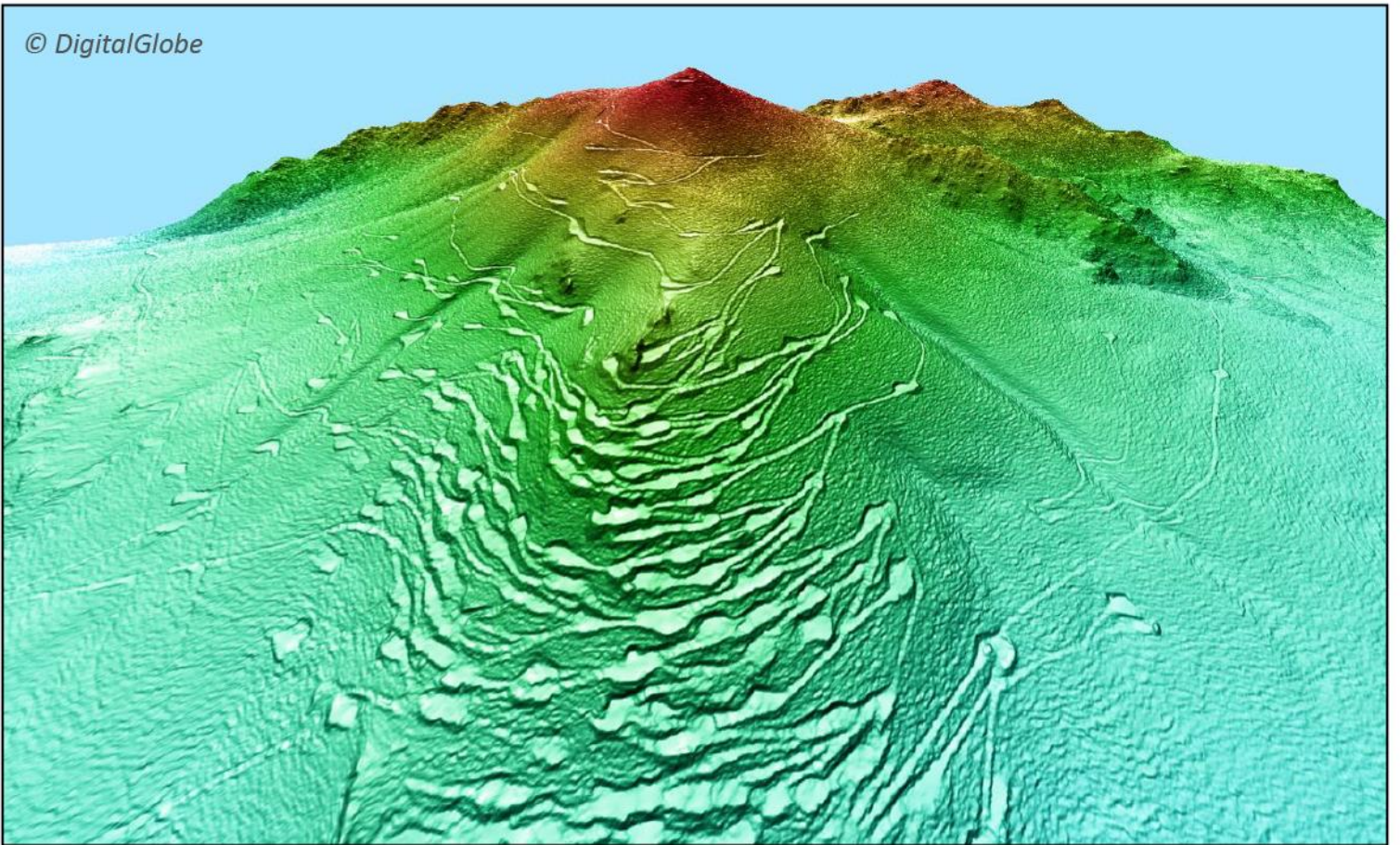


Figure 3 - 3D image of the 1m PhotoSat survey grid accurate to 20cm in elevation (image courtesy of Photosat).

© DigitalGlobe

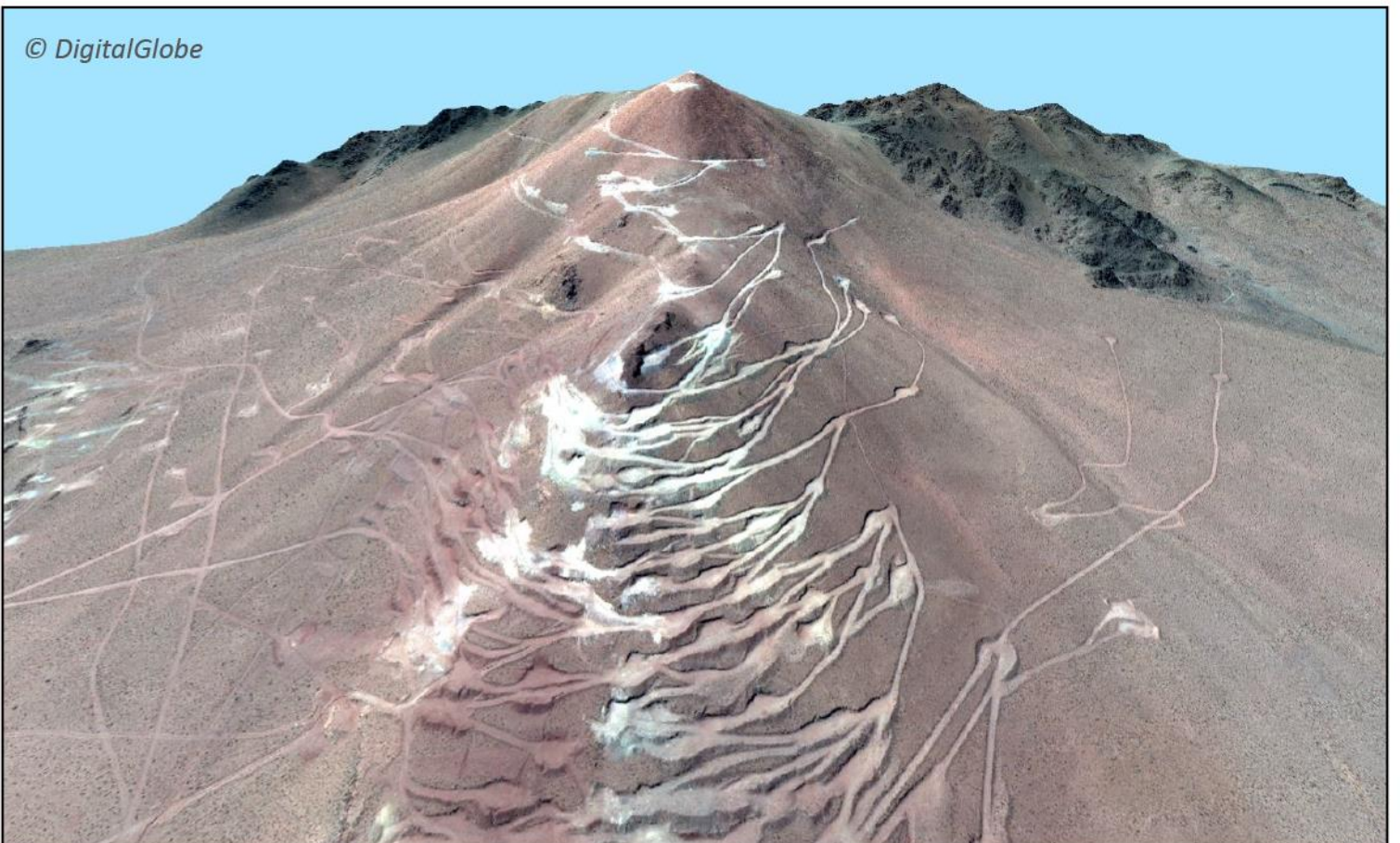


Figure 4 - 3D image of the WorldView-3 satellite photo projected onto the 3D elevation surface (image courtesy of Photosat).