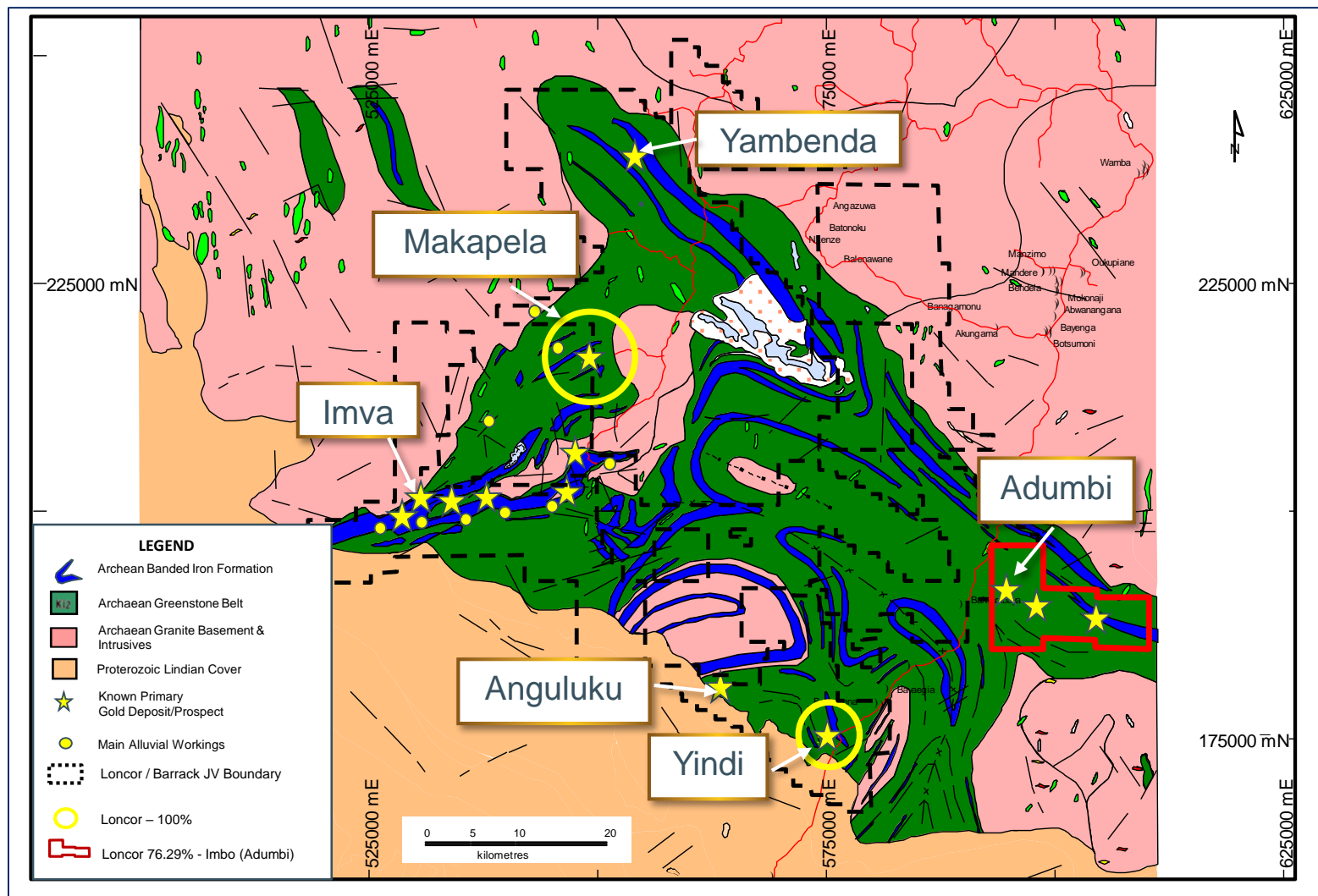
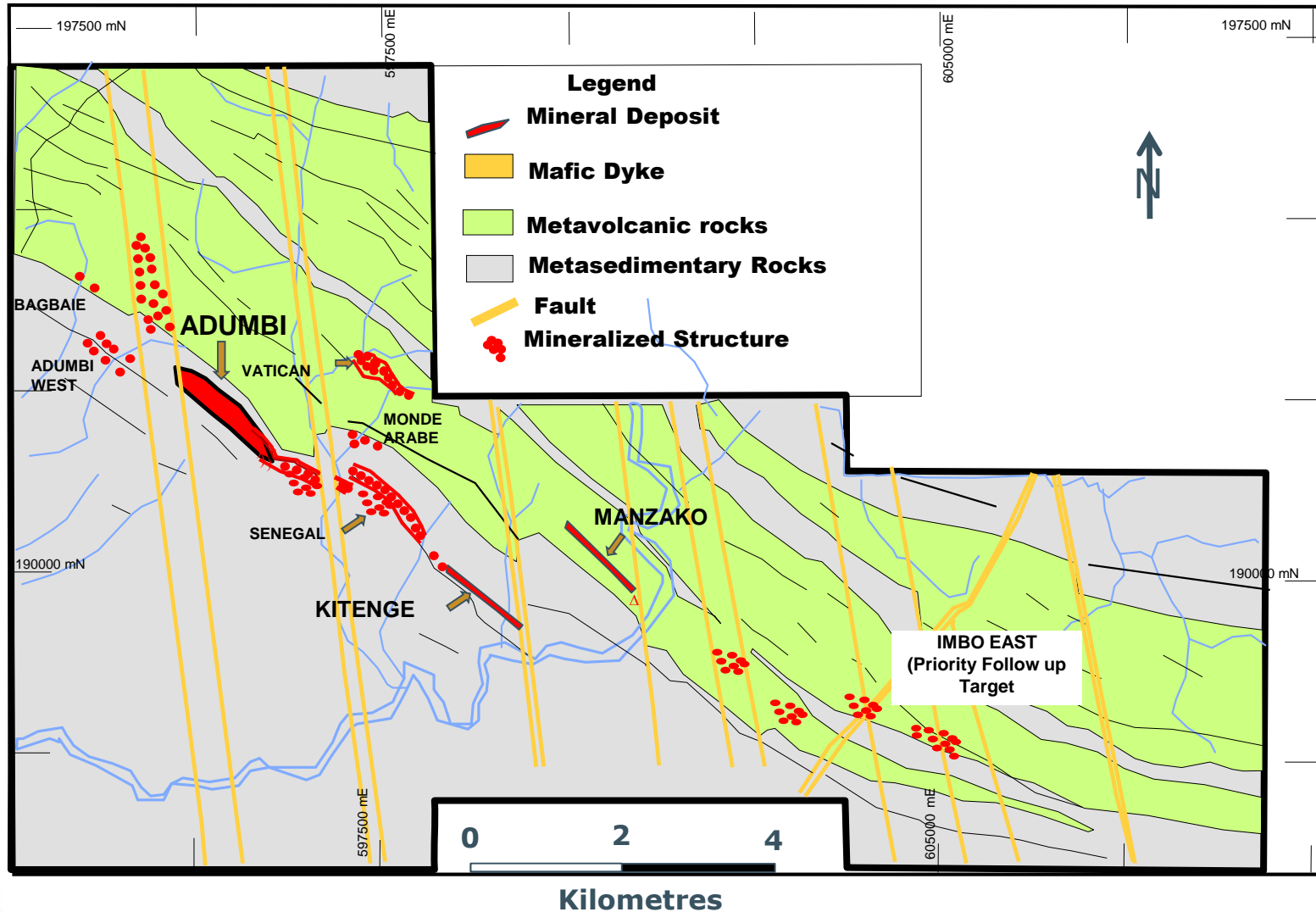


# Figure 1: Regional Geology map of the Ngayu Belt

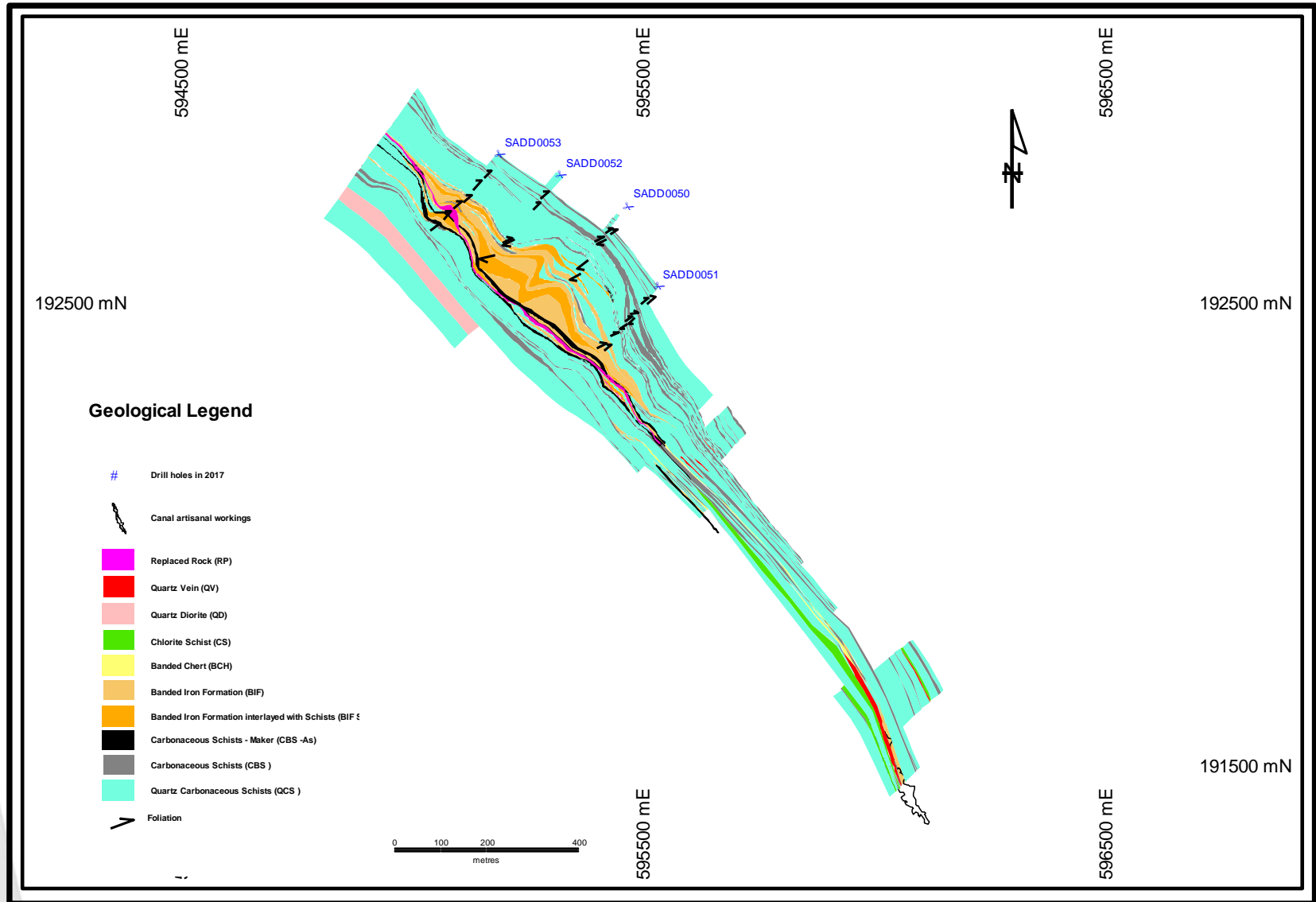


# Figure 2: Geology of the Imbo Project (76.29% Loncor)

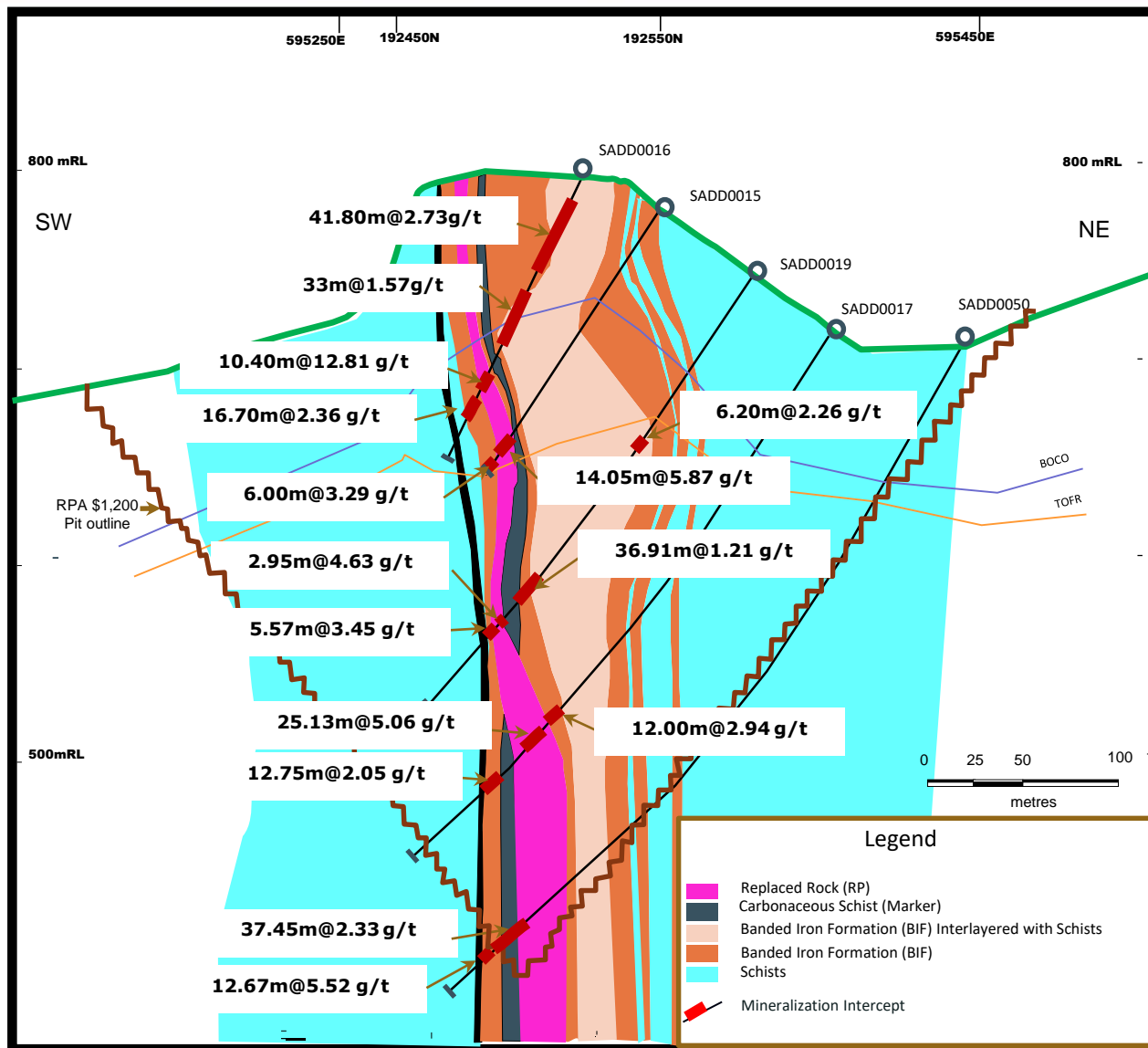
## 14 km Mineralized Trend



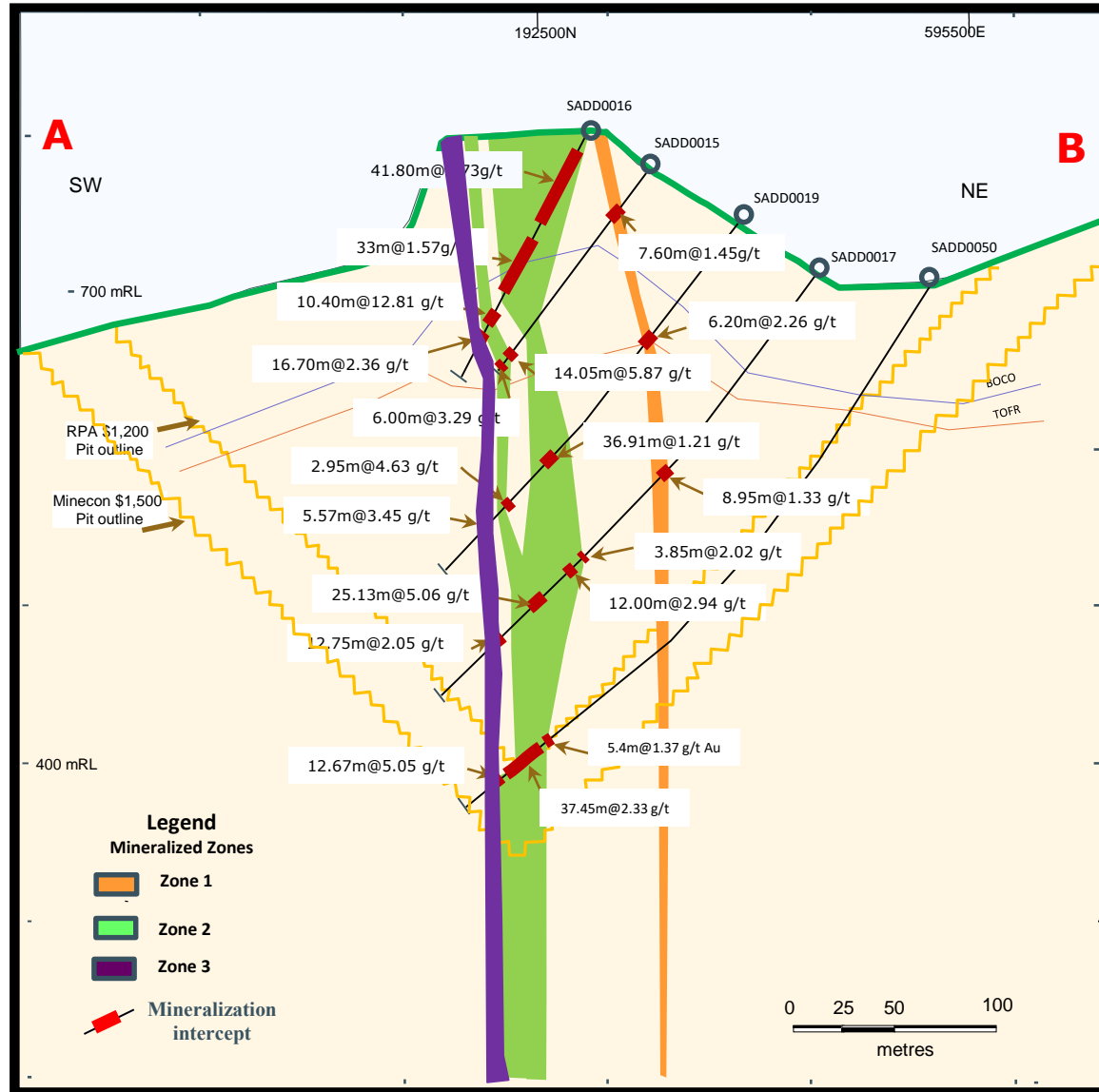
# Figure 3: Geological Map of Adumbi



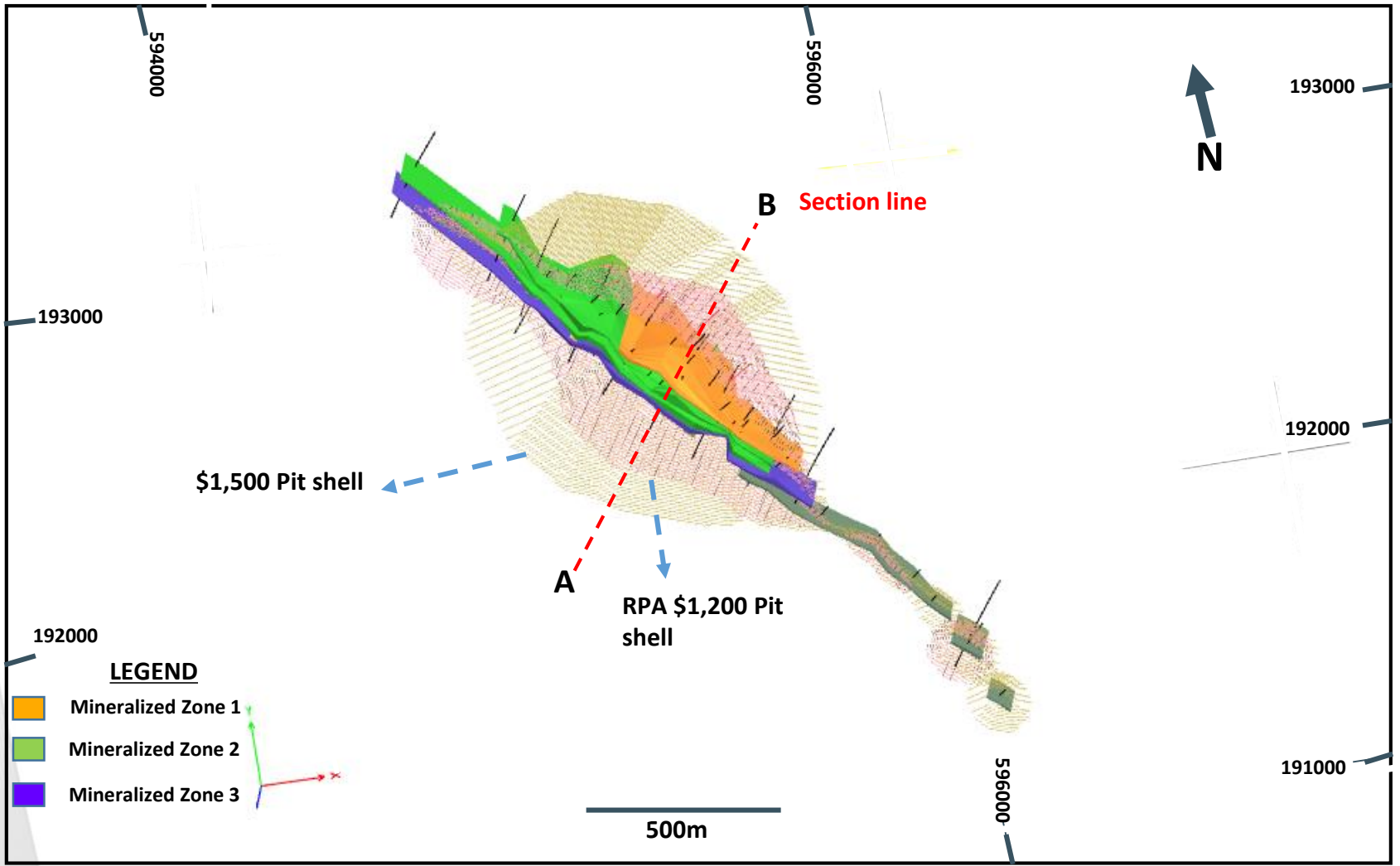
# Figure 4: Adumbi Geological Cross Section



# Figure 5: Cross section A-B with Mineralized Zones

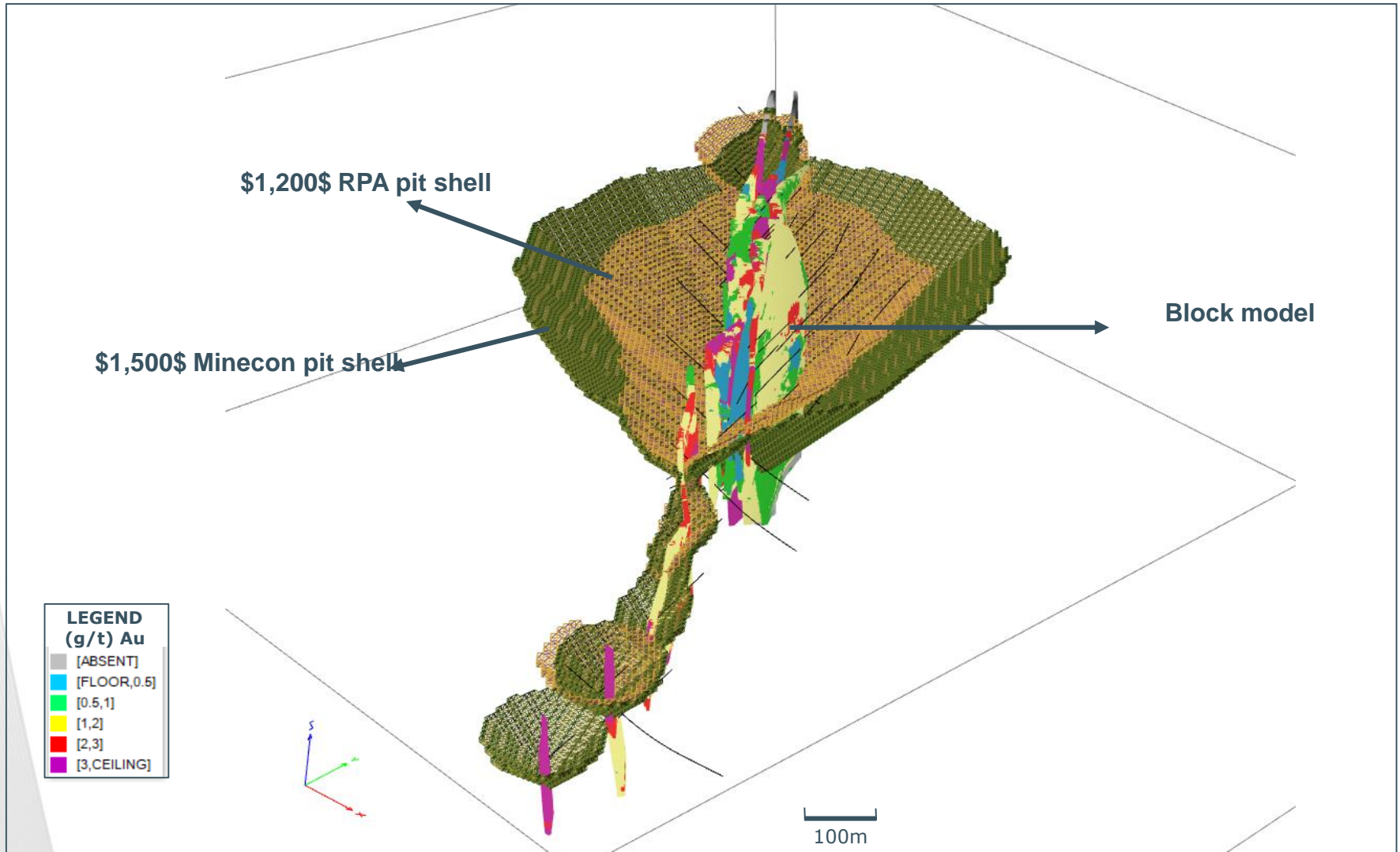


# Figure 6: Plan of the Interpreted Mineralized Zones

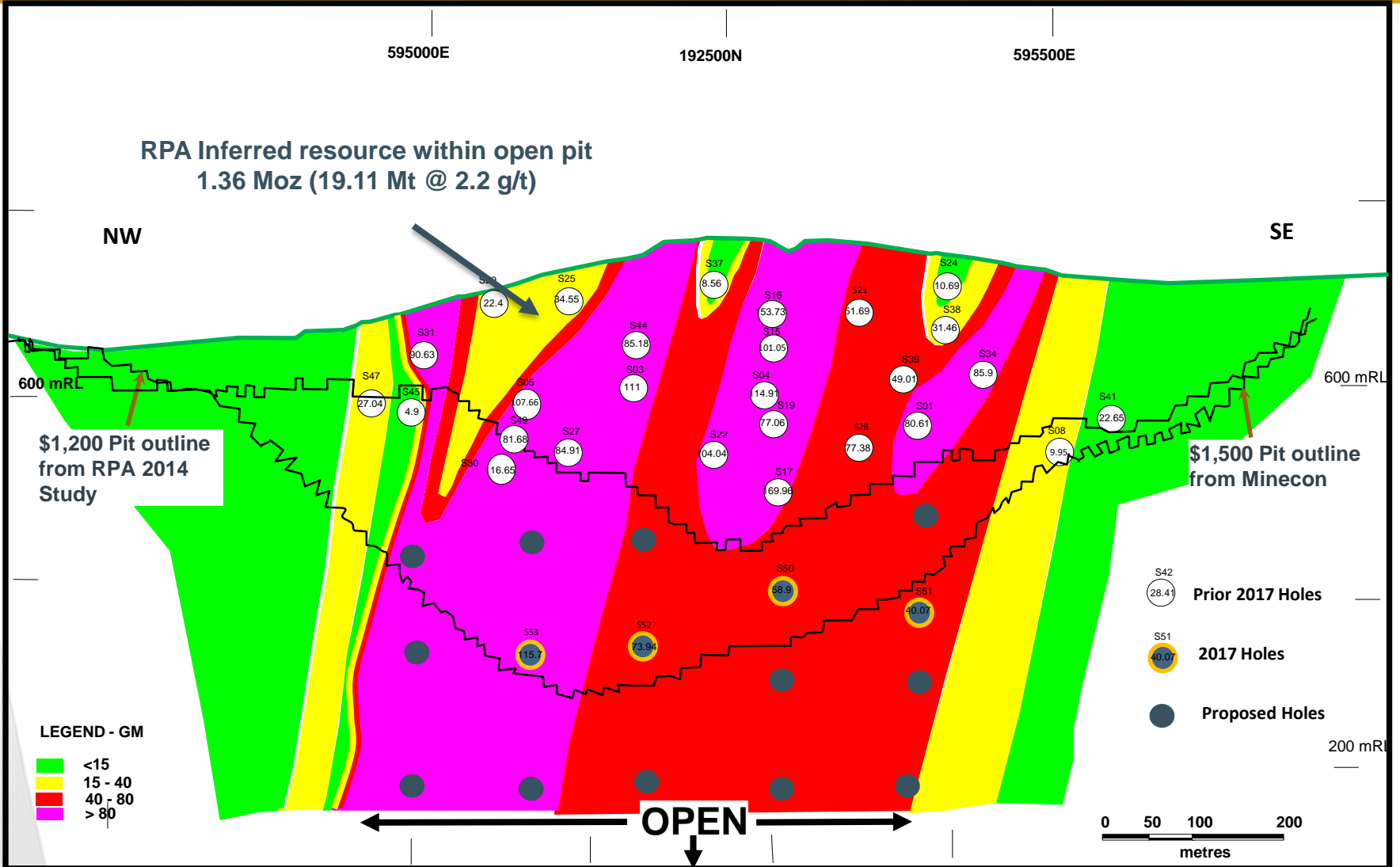




# Figure 7: 3-D Mineralization Model Showing \$1,200 (RPA) and \$1500 (Minecon) Pit Shells



# Figure 8: Longitudinal section of Adumbi Showing the Down Dip/Plunge Potential



Steep plunge of 80° – 90° NW is similar to the fold axis attitude noted in the U/G mapping