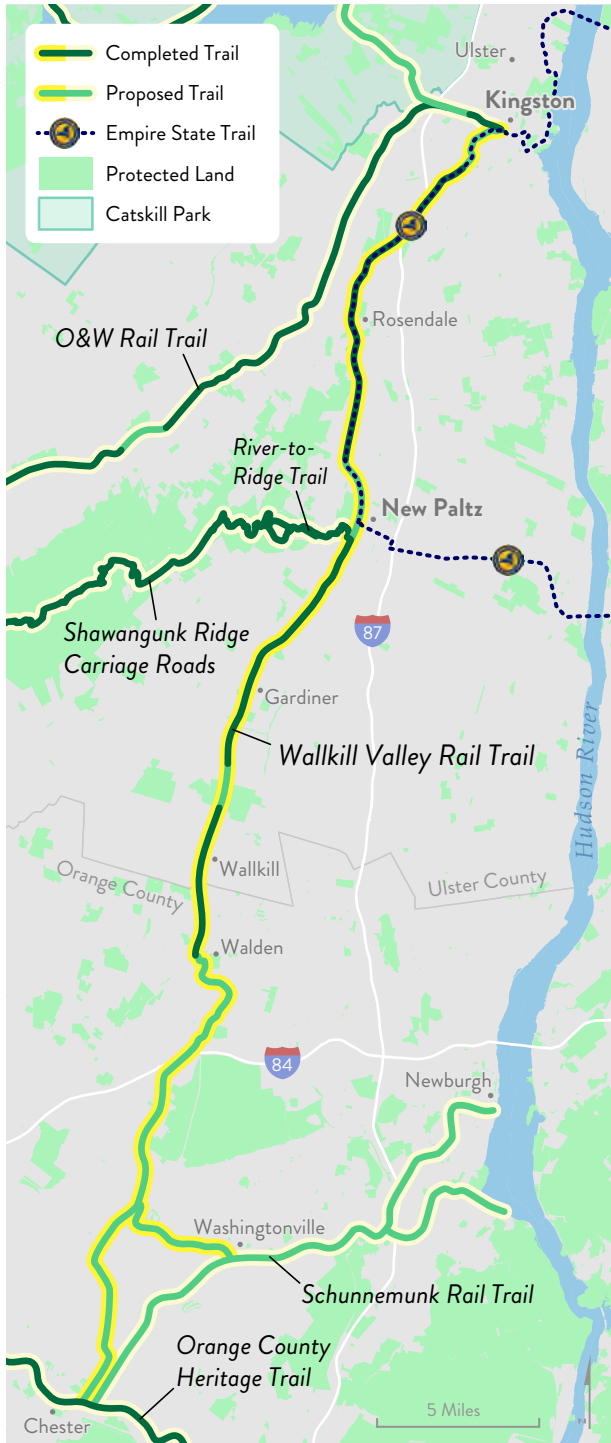


 Catskill Park     Empire State Trail

0    5    10  
Miles



# Wallkill Valley Rail Trail



## Location

Ulster County and Orange County

## Trail Length Vision

38 Miles

## Communities to be Served

Kingston, Ulster, Rosendale, New Paltz, Newburgh, Gardiner, Wallkill, Walden, Washingtonville and Chester.

## Trail Will Connect With

Catskill Mountain Rail Trail, Empire State Trail, River-to-Ridge Trail, Shawangunk Ridge Carriage Roads, Schunemunk Rail Trail, and the Orange County Heritage Trail.

## Immediate Funding Goals

- \$100,000 to leverage public funding for improvements to the 6.25-mile section from the Village of New Paltz to the Town of Gardiner.
- \$1.5 million for rehabilitation of the trail from Gardiner to Wallkill.

The Wallkill Valley Rail Trail currently runs from the City of Kingston to Gardiner, and is envisioned to extend as far south as the Village of Chester. It runs through the scenic Binnewater Hills, the northern reaches of the Shawangunk Ridge, and scenic farmland, and includes a 940-foot long trestle and pedestrian walkway over the Rondout Creek in Rosendale.



Rosendale Trestle

## OSI History

In 2009, OSI partnered with the Wallkill Valley Land Trust to acquire more than 11 miles of the northern Rosendale and Ulster sections of what is now the Wallkill Valley Rail Trail and, in 2013, the organizations raised nearly \$1.5 million to restore the Rosendale Trestle. Then, between 2018 and 2022, OSI raised another \$2 million to fully restore more than 13 miles of the trail from the City of Kingston through the Village of New Paltz.

## Impact

The Wallkill Valley Rail Trail functions as a major engine for tourism activity in the communities along its route. A section of the Wallkill Valley Rail Trail is part of New York's Empire State Trail.

## Current Projects

- Restoration of a five-mile section of the Wallkill Valley Rail Trail from New Paltz to Gardiner.
- Extending the Wallkill Valley Rail Trail further south into Orange County to connect with the Schunemunk Rail Trail and Orange County Heritage Trail.

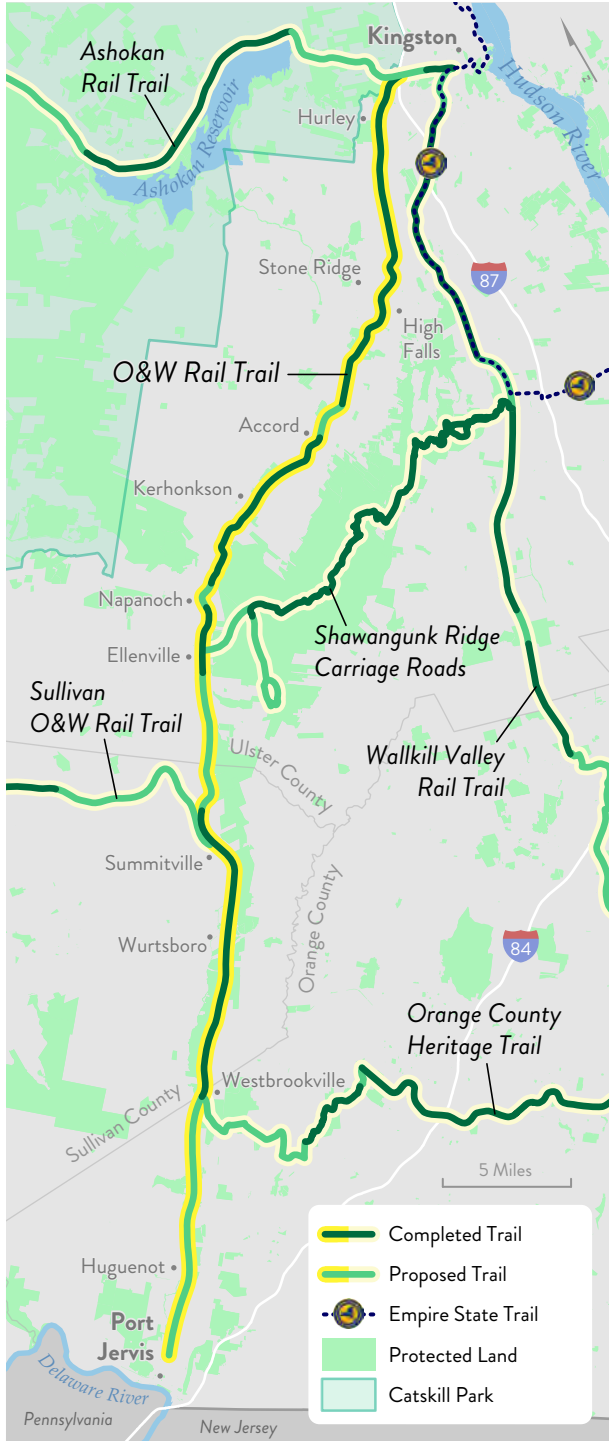
## Trail Partners

Wallkill Valley Land Trust, New York State Parks, Palisades Interstate Park Commission, Hudson River Valley Greenway Conservancy, Ulster County, Orange County, the Village of New Paltz, and Towns of Ulster, Rosendale, New Paltz, and Gardiner.

01/2023

# O&W Rail Trail

## including the D&H Canal



### Location

Ulster County, Sullivan County, and Orange County

### Trail Length Vision

57 Miles

### Communities to be Served

Kingston, Hurley, Stone Ridge, High Falls, Accord, Kerhonkson, Napanoch, Ellenville, Summitville, Mamakating, Wurtsboro, Westbrookville, Cuddebackville, Huguenot, and Port Jervis.

### Trail Will Connect With

Shawangunk Ridge Carriage Roads, Orange County Heritage Trail, the Delaware and Hudson Rivers, Sullivan O&W Rail Trail, Catskill Mountain Rail Trail, and D&H Canal.

### Immediate Funding Goals

- \$350,000 for feasibility analysis and community outreach for full corridor.
- \$800,000 for acquisition of critical trail gap in Otisville.

The abandoned bed of the Kingston-Port Jervis branch of the Ontario & Western Railroad runs for 57 miles, and along much of its route is paralleled by the historic Delaware & Hudson Canal. Running through the scenic Rondout and Neversink Valleys and traversing numerous protected landscapes, it has the potential of becoming the longest “feeder” trail to the Empire State Trail.



Greg Miller

O&W Rail Trail

## OSI History

West of the Shawangunk Ridge, OSI has acquired more than 17 miles of rail corridor and transferred more than 14 miles to the Town of Warwarsing, the Town of Mamakating, and the New York State Department of Environmental Conservation.

## Impact

The O&W Rail Trail serves as the main trail that will eventually reconnect the cities of Kingston and Port Jervis.

## Current Projects

- OSI is actively fundraising to complete a vision plan, engineering feasibility study, and economic impact assessment to fully complete the potentially 57-mile corridor.
- Restoration of a three-mile stretch of the O&W Rail Trail connecting the hamlets of Accord and Kerhonkson.
- Restoration of a six-mile stretch of the O&W Rail Trail between Canal Street and Ellenville, north to Foordmore Road in Wawarsing.

## Trail Partners

Ulster County, Sullivan County, Orange County, Cities of Kingston and Port Jervis, Towns of Hurley, Marletown, Rochester, Wawarsing, and Mamakating, and Villages of Ellenville and Wurtsboro. Sullivan O&W Rail Trail Alliance, New York State Parks, Palisades Interstate Park Commission, New York State Department of Environmental Conservation, New York-New Jersey Trail Conference, and the O&W Rail Trail Coalition.

01/2023

# Catskill Mountain Rail Trail

## including the Ashokan Rail Trail



Envisioned as a multi-use trail, this trail runs the breadth of the Catskill Park, passing through scenic farmland, the Ashokan Reservoir, and numerous Catskill hamlets and villages. Three segments of this trail – the Ashokan Rail Trail, Kingston Point Rail Trail, and Kingston Midtown Linear Park – have been developed for public recreational use.

### **Location**

Ulster County and Catskill Park

### **Trail Length Vision**

39 Miles

### **Communities to be Served**

City of Kingston, Hurley, Woodstock, Shokan, Boiceville, Mount Tremper, Phoenicia, Shandaken, Big Indian, and Highmount.

### **Trail Will Connect With**

Empire State Trail, Walkkill Valley Rail Trail, O&W Rail Trail, and the Hudson River.

### **Immediate Funding Goal**

- \$750,000 to complete design development for the six-mile Ashokan Rail Trail Phase II that would connect the City of Kingston to the Ashokan Reservoir and the larger Catskill Park.



Roger Rosenbaum for Ulster County

Ashokan Rail Trail

## OSI History

In 2015, OSI funded a feasibility study that leveraged more than \$17 million from Ulster County in 2019 to construct the nearly 12-mile long Ashokan Rail Trail. The trail extends from Basin Road in West Hurley to Route 28A in Boiceville.

## Impact

Since opening in October 2019, the Ashokan Rail Trail has welcomed more than 200,000 visitors a year. The opening of the trail marked the first public access to the land in more than a century.

## Current Projects

- OSI is actively fundraising to complete an engineering and feasibility study and economic impact assessment for the six-mile Ashokan Rail Trail Phase II that would connect the City of Kingston to the Ashokan Reservoir and the larger Catskill Park.

## Trail Partners

City of Kingston, Ulster County, Woodstock Land Conservancy, Catskill Mountainkeeper, Ulster County Trails Advisory Committee, and New York City Department of Environmental Protection.

01/2023

# Sullivan O&W Rail Trail



The main line of the former Sullivan Ontario & Western railroad runs 50 miles across the breadth of Sullivan County, connecting hamlets, towns, villages, parks, preserves and scenic farmland. Numerous segments have been developed as multi-use trails, and the long-term plan is to unify these segments into a nearly continuous trail running from the Village of Wurtsboro to Livingston Manor.

## Location

Sullivan County

## Trail Length Vision

50 Miles

## Communities to be Served

Wurtsboro, Summitville, Mountaindale, Woodridge, Hurleyville, Liberty, Parkville, and Livingston Manor.

## Trail Will Connect With

The O&W Rail Trail corridor into Sullivan, Ulster, and Orange counties.

## Immediate Funding Goal

- \$400,000 for targeted acquisition of parcels essential to connectivity.





Brett Cole

*Hurleyville Rail Trail*

## OSI History

In 2014, OSI acquired nine miles of railbed to develop a trail starting near Route 17 near the village of Liberty and running east to Main Street in South Fallsburg. It is now a fully renovated rail trail known as the Hurleyville Rail Trail. OSI also acquired four miles of railbed in Wurtsboro which was conveyed to the town of Mamakating.

## Impact

The rail trail passes through farms, woods, and wetlands, and will eventually connect to the main O&W Rail Trail and D&H Canal near Summitville. The trail has the potential to rejuvenate remote communities and serve as an engine for tourism activity in the locales along its route.

## Current Projects

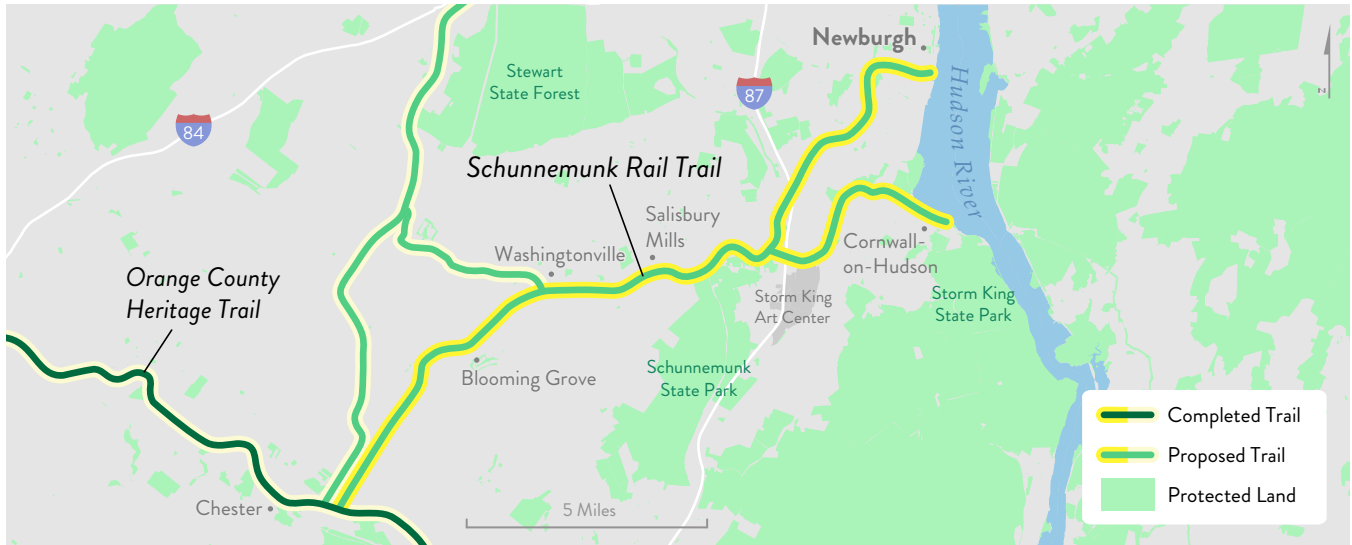
- OSI and local partners are working to protect the rail trail near Livingston Manor and Summitville.

## Trail Partners

Sullivan O&W Rail Trail Alliance, Catskill Mountainkeeper, Center for Discovery, Sullivan County, and Towns of Fallsburg, Rockland, and Mamakating.

01/2023

# Schunnemunk Rail Trail



The 10-mile long Schunnemunk Rail Trail runs from Chester to Salisbury Mills in Orange County, and crosses and re-crosses the Moodna Creek on six historic bridges. The scenic trail, which starts in the black dirt region of Orange County and connects villages to extensive parkland, is envisioned to extend easterly towards the Hudson River and the City of Newburgh.

## Location

Orange County

## Trail Length Vision

22 Miles

## Communities to be Served

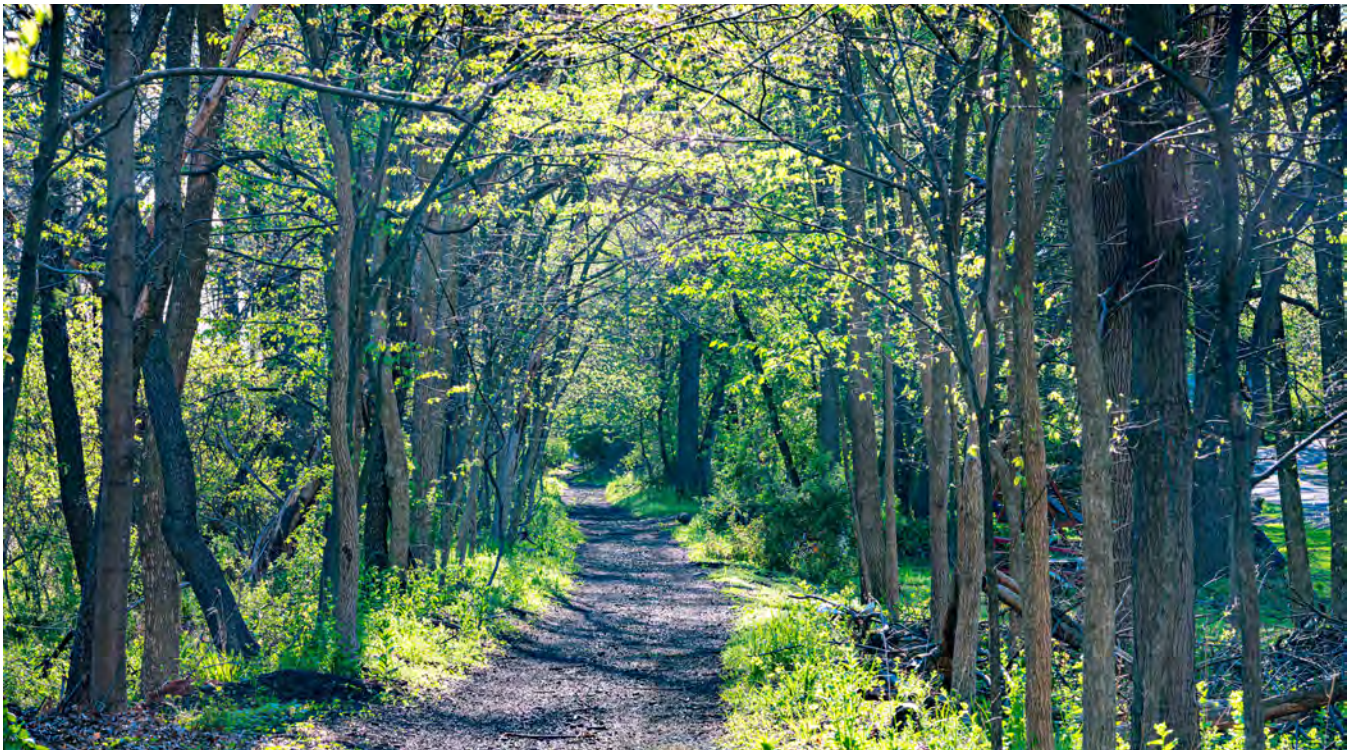
Chester, Washingtonville, Salisbury Mills, Blooming Grove, Cornwall, Cornwall-on-Hudson, and Newburgh.

## Trail Will Connect With

Orange County Heritage Trail, Empire State Trail, and the Hudson River.

## Immediate Funding Goal

- \$1.5 million for OSI to acquire critical gaps.



Greg Miller

Schunнемunk Rail Trail

## OSI History

OSI purchased nearly 10-miles of the former Erie Railroad Line to leverage funding from Orange County for trail development, setting the stage for the future construction of a Schunнемunk Rail Trail. The property starts in the Town of Cornwall at the Moodna Trestle, traverses the towns of Blooming Grove and Chester, and ends at Orange County's Camp LaGuardia.

## Impact

This trail will connect the Hudson River in Newburgh and Cornwall-on-Hudson to Schunнемunk State Park, Goosepond Mountain State Park, the Orange County Heritage Trail, and link to both the Salisbury Mills-Cornwall and Harriman train stations of the MTA Port Jervis Line.

## Current Projects

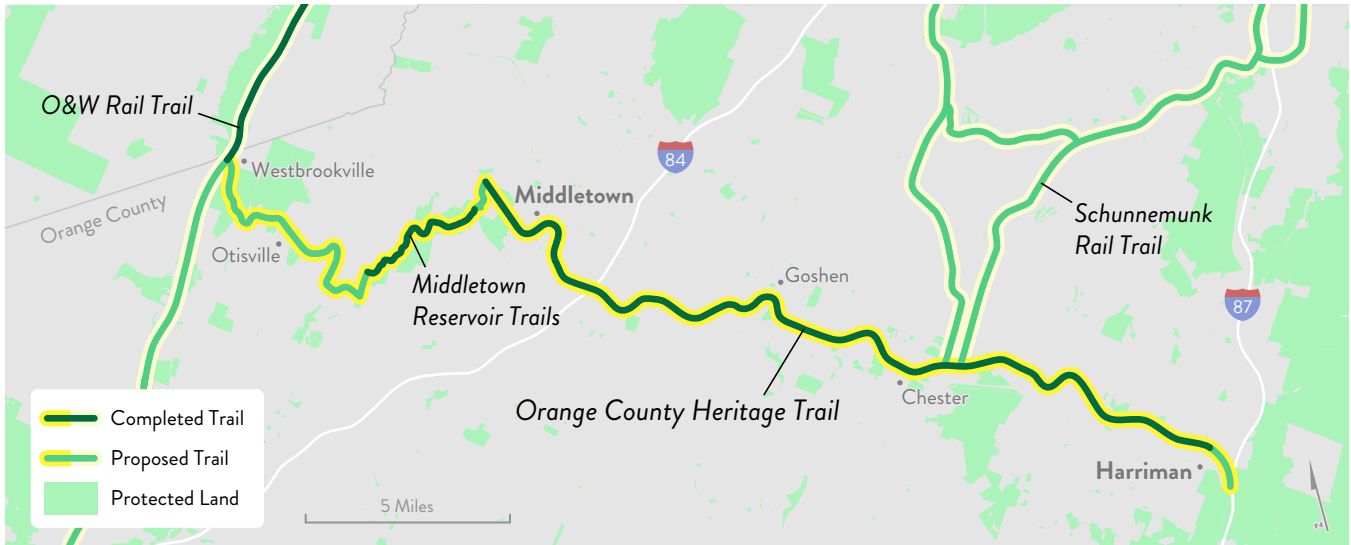
- Extending the Schunнемunk Rail Trail to Storm King Art Center and Salisbury Mills Train Station.

## Trail Partners

Orange County, Orange County Land Trust, Moodna Creek Watershed Alliance, New York State Parks, and Palisades Interstate Park Commission.

01/2023

# Orange County Heritage Trail



The Orange County Heritage Trail is a paved multi-use trail that runs through diverse landscapes, connecting numerous growing towns and villages in Orange County to each other and to open farmland, nature preserves, and historic sites. It is envisioned that this trail will run from the Harriman Train Station, to where it will connect to west of the City of Middletown.

## Location

Orange County

## Trail Length Vision

35 Miles

## Communities to be Served

Harriman, Monroe, Chester, Goshen, the City of Middletown, Otisville, and Westbrookville.

## Trail Will Connect With

Schunemunk Rail Trail, O&W Rail Trail and D&H Canal, Middletown Reservoir Trails, Long Path, Highlands Trail, and the Shawangunk Ridge Trail.

## Immediate Funding Goal

- \$1.25 million for the acquisition of critical parcels connecting to the Harriman Train Station and the Schunemunk Rail Trail.



Bill Amos

Orange County Heritage Trail

## OSI History

OSI acquired 10 miles of the Schunnemunk Rail Trail to connect with and expand the Orange County Heritage Trail.

## Impact

Critical properties were permanently protected just east of Harriman, at Goosepond Mountain State Park, and along the Shawangunk Ridge.

## Current Projects

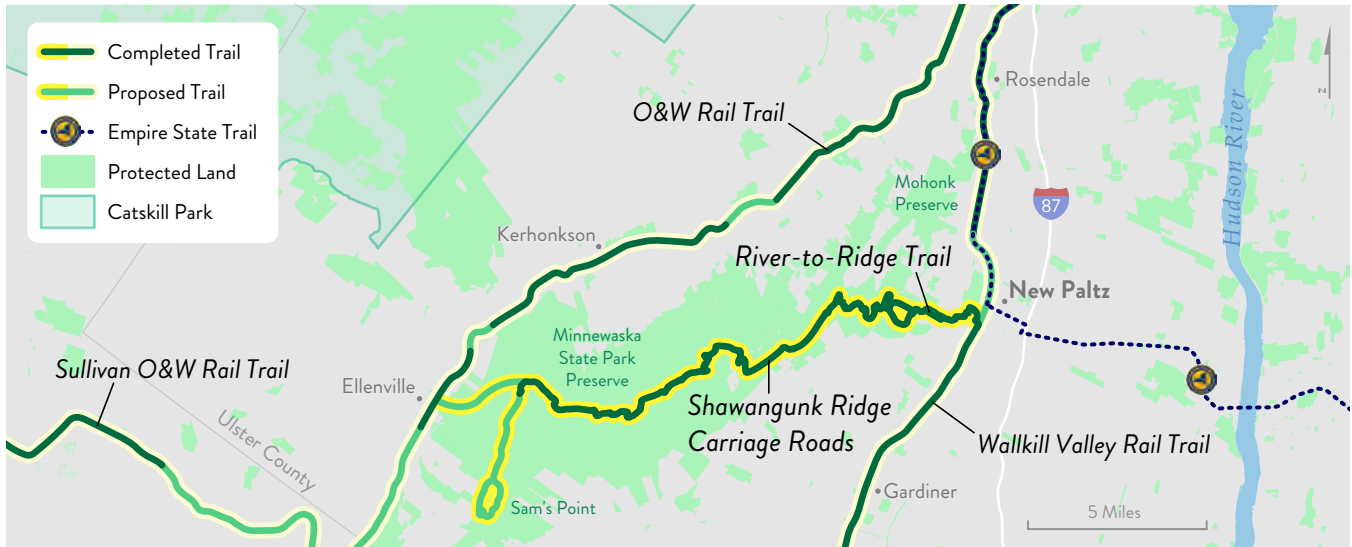
- OSI is working on the Harriman Station connector parcel, a 1.5 mile long section of disused rail corridor linking the eastern end of the Heritage Trail with Harriman Station.
- Orange County is working to designate Camp LaGuardia as a county park to connect OSI's planned Schunnemunk Rail Trail and the Orange County Heritage Trail.

## Trail Partners

Orange County, Orange County Land Trust, and the New York-New Jersey Trail Conference.

01/2023

# Shawangunk Ridge Carriage Roads



Minnewaska State Park Preserve and the Mohonk Preserve contain a historic and highly scenic network of shale Victorian-era carriage roads which are ideal for walking, hiking, biking and cross-country skiing. These carriage roads total more than 80 miles in length, and span a variety of landscapes on the Shawangunk Ridge as they run from New Paltz to Ellenville.

## Location

Ulster County

## Trail Length Vision

80 miles

## Communities to be Served

Gateway communities of New Paltz and Ellenville as well as all communities adjacent to the Shawangunk Ridge.

## Trail Will Connect With

Empire State Trail, Walkkill Valley Rail Trail, Minnewaska State Park Preserve, Sam's Point, Mohonk Preserve, O&W Rail Trail and D&H Canal, Long Path, and Shawangunk Ridge Trail.

## Immediate Funding Goals

- \$50,000 for engineering and design analysis of Smiley Carriage Road to Ellenville.
- \$1.25 million for rehabilitation of the Lake Awosting Carriage Road.



Peter Nelson

Hamilton Point Carriage Road

## OSI History

OSI has protected more than 36,000 acres of land on and around the Shawangunk Ridge - including more than doubling the size of Minnewaska State Park Preserve. Since 2014, OSI has invested more than \$4 million to rebuild more than 15 miles of Minnewaska's carriage roads and raised more than \$3 million to create the Minnewaska Visitor Center, which opened in 2020. In total, OSI has spent north of \$100 million on land acquisition, trails, and visitors center improvements along the Shawangunk Ridge.

**River-to-Ridge Trail:** On the eastern side of the Shawangunk Ridge, OSI spent \$5 million to protect, construct and now manage the River-to-Ridge Trail, a six-mile loop trail that offers hikers, cyclists, and cross-country skiers a safe connection between the Village of New Paltz and the Shawangunk Ridge.

## Impact

Minnewaska State Park Preserve is visited by more than half a million adventurers each year, while OSI's River-to-Ridge Trail welcomes 200,000 visitors per year. Both sites are well-known for wide, multi-use gravel paths, which make them accessible to the widest range of visitors.

## Current Projects

- OSI is restoring 2.4 miles of Minnewaska's High Point Carriage Road.
- OSI has begun active planning and design of two additional sections of Minnewaska's carriage roads, including the western three-mile section of the Smiley Carriage Road connecting to the Village of Ellenville, and the remaining two miles of the Lake Awosting Carriage Road.

## Trail Partners

New York State Parks, Palisades Interstate Park Commission, New York-New Jersey Trail Conference, Mohonk Preserve, Village of New Paltz, and the Town of New Paltz.

01/2023