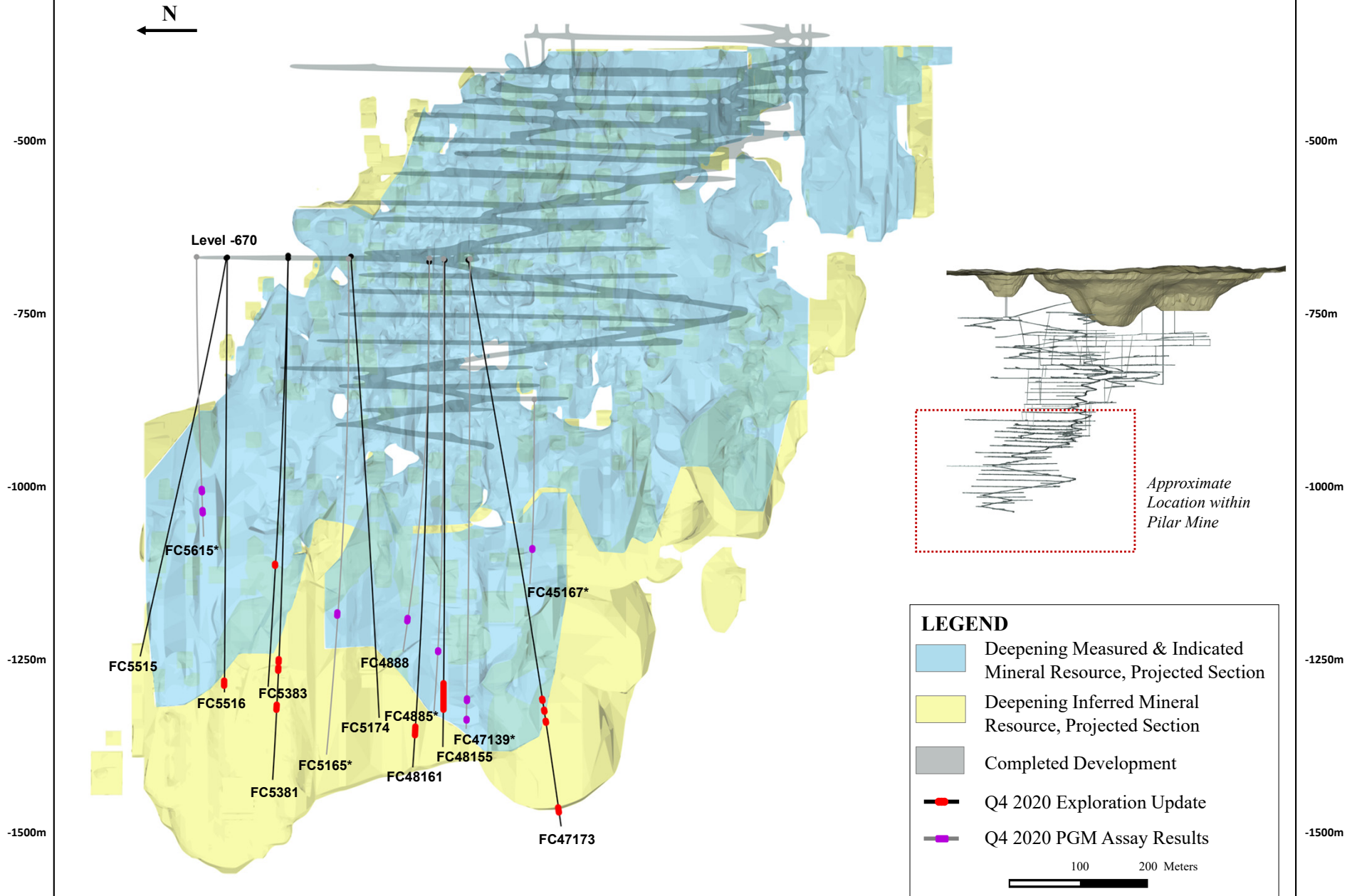
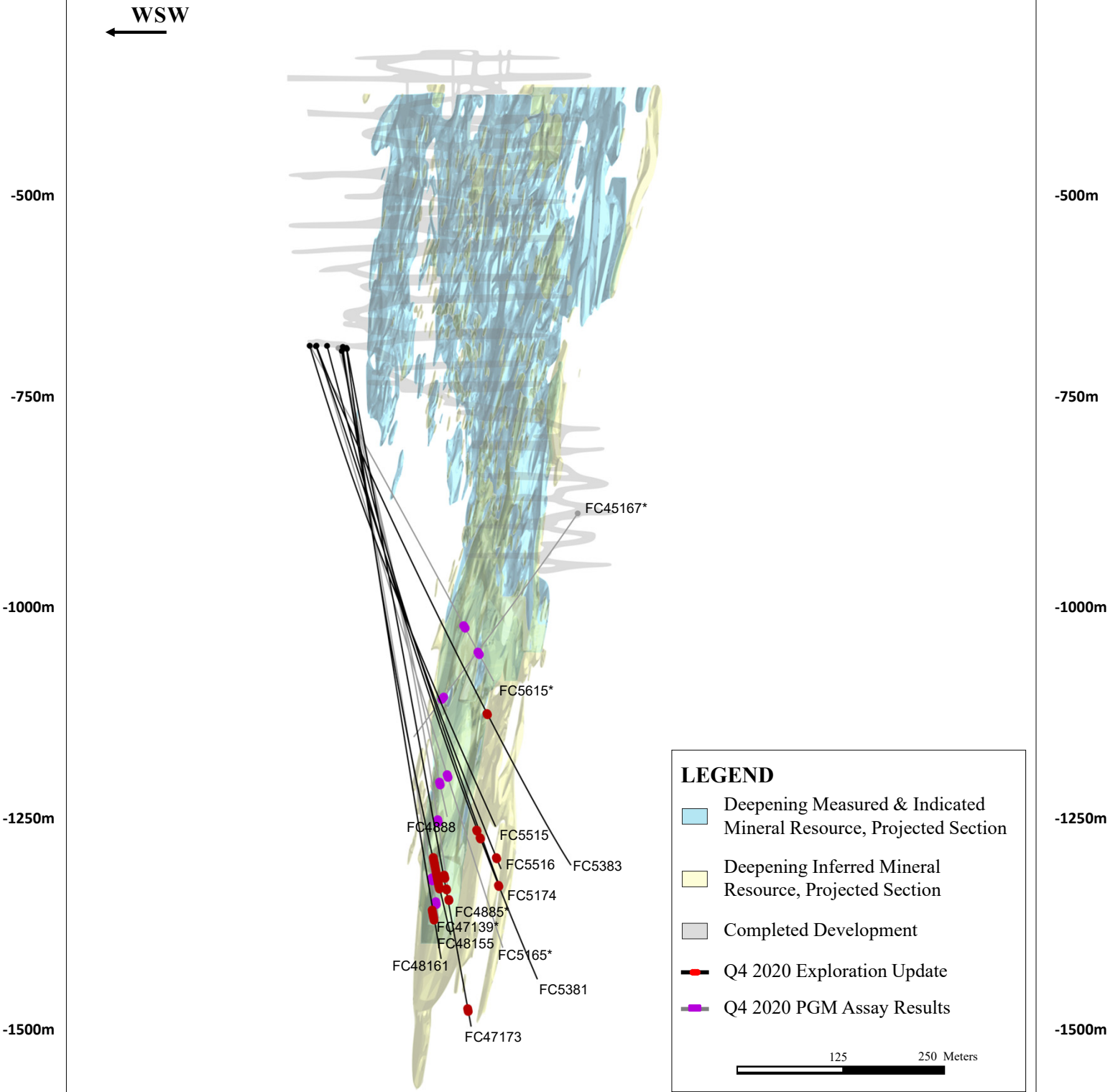


Figure 1
Deepening Extension, North-South Long Section



Mineral resource outline inclusive of mineral reserves. Mineral resources which are not mineral reserves do not have demonstrated economic viability. Please refer to the Company's press release dated November 30, 2020 for additional technical and scientific information related to the Pilar Mine.

Figure 2
Deepening Extension, WSW-ENE Composite Section



Mineral resource outline inclusive of mineral reserves. Mineral resources which are not mineral reserves do not have demonstrated economic viability. Please refer to the Company's press release dated November 30, 2020 for additional technical and scientific information related to the Pilar Mine.

Figure 3 Pilar Mine, Deepening Extension (Drilling From Level -670, -875)

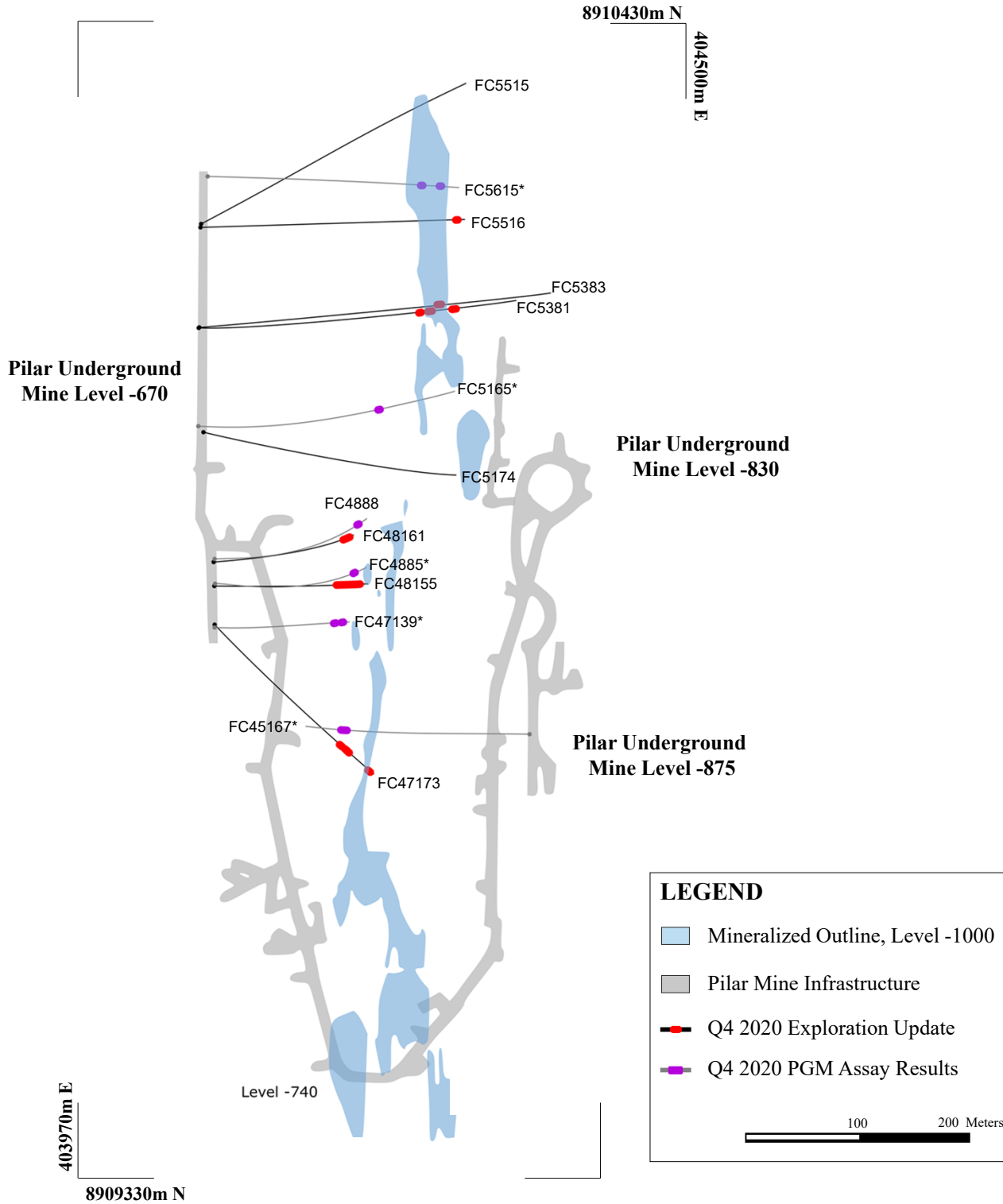
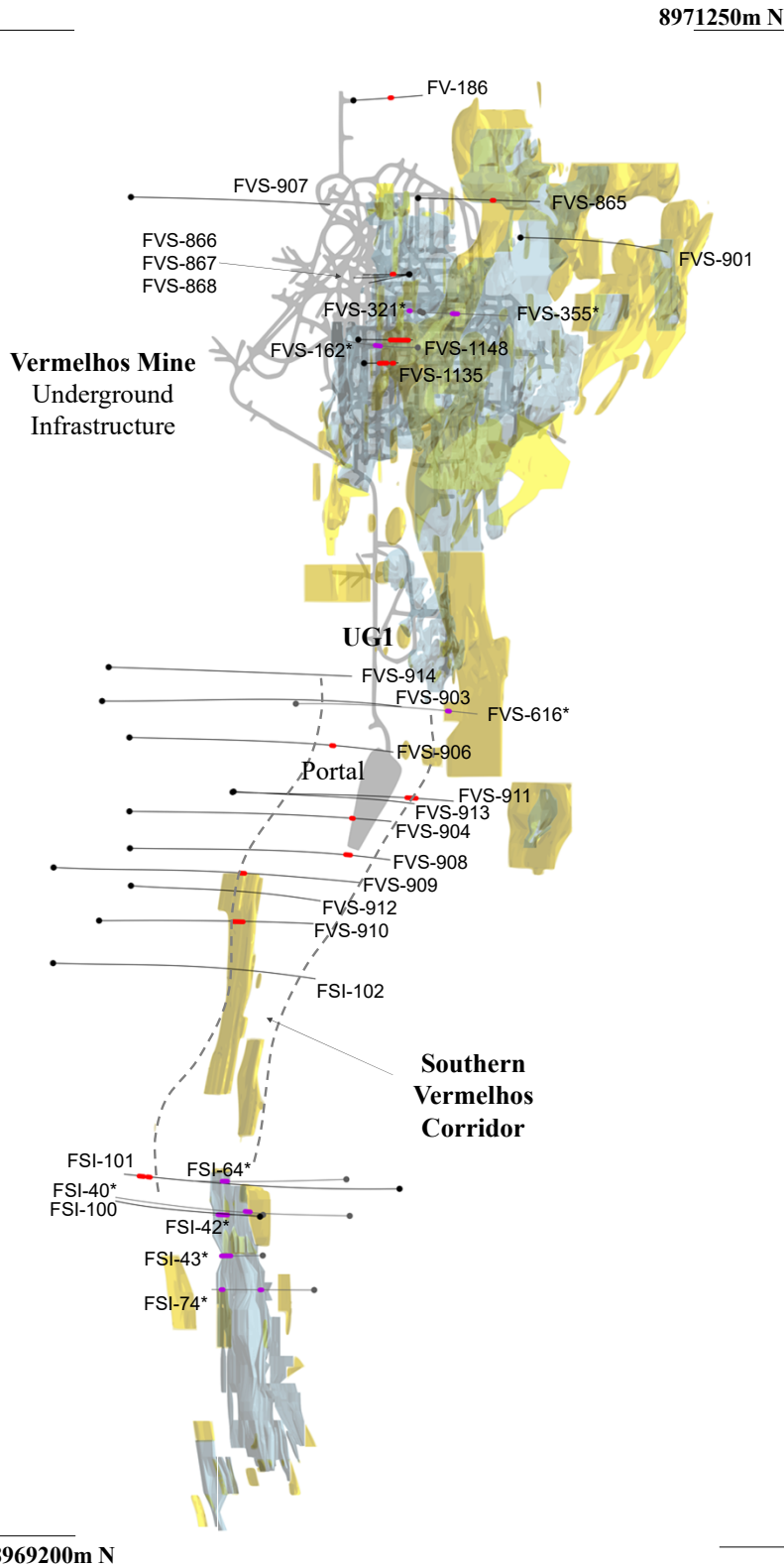


Figure 4
Vermelhos Main/East Zone & Siriema Drilling, Plan View



LEGEND

- Completed Development, Vermelhos Mine
- Surface Projection of Vermelhos & Siriema Measured & Indicated Mineral Resource
- Surface Projection of Vermelhos & Siriema Inferred Mineral Resource
- Q4 2020 Exploration Update
- Q4 2020 PGM Assay Results
- Interpreted Southern Vermelhos Corridor Boundary

150 300 Meters

Notes:
Southern Vermelhos Corridor projection shown to demonstrate future area of exploration within the Vermelhos District. The projection is based on data compilation work which includes review of geological controls, structural analysis and copper mineralization identified during the Company's technical programs. The interpretation and boundary limits do not imply continuity of mineralization, or actual thickness of mineralization which has yet to be defined. Mineral resources shown inclusive of mineral reserves.

Mineral resources which are not mineral reserves do not have demonstrated economic viability. For additional information about the current mineral reserves of these zones please refer to the Company's press release dated November 30, 2020.

Figure 5
Vermelhos Main/East Zone & Siriema, North-South Long Section

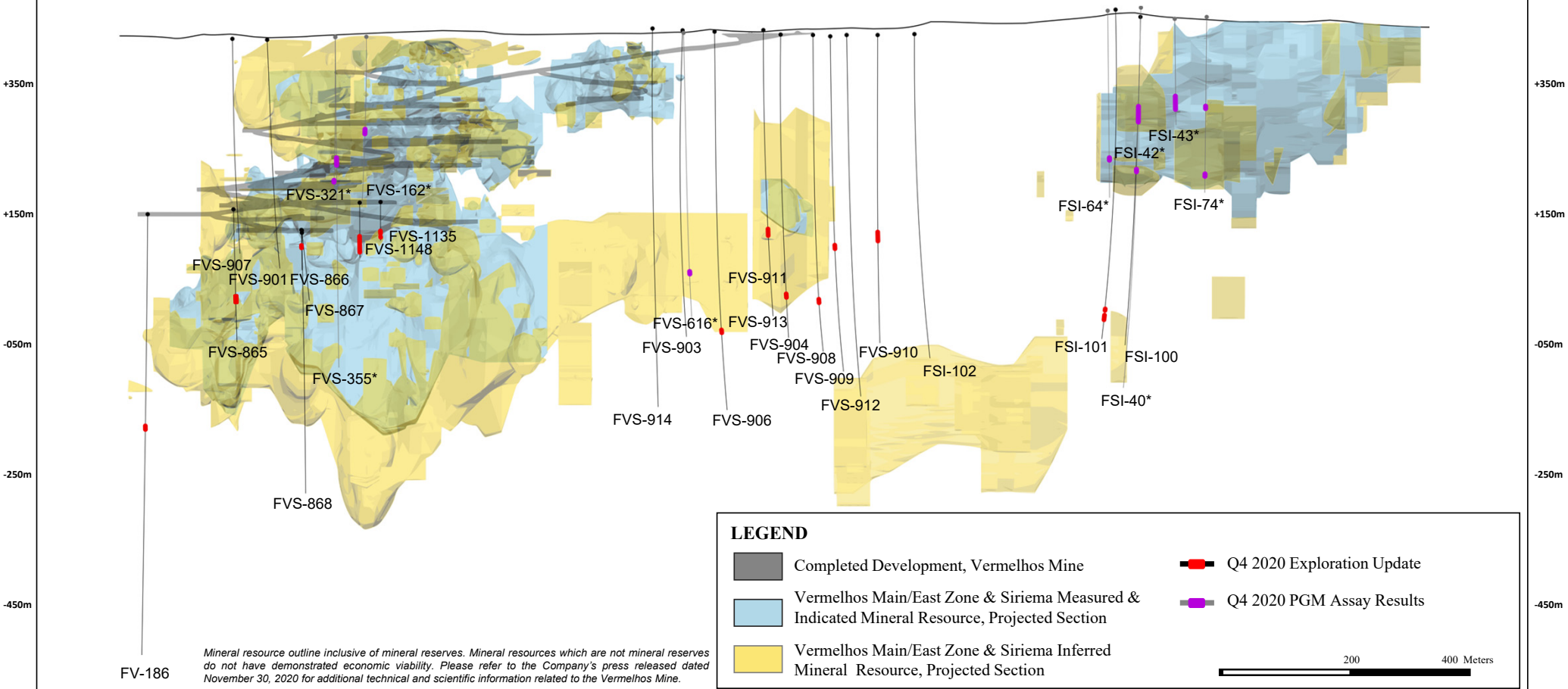
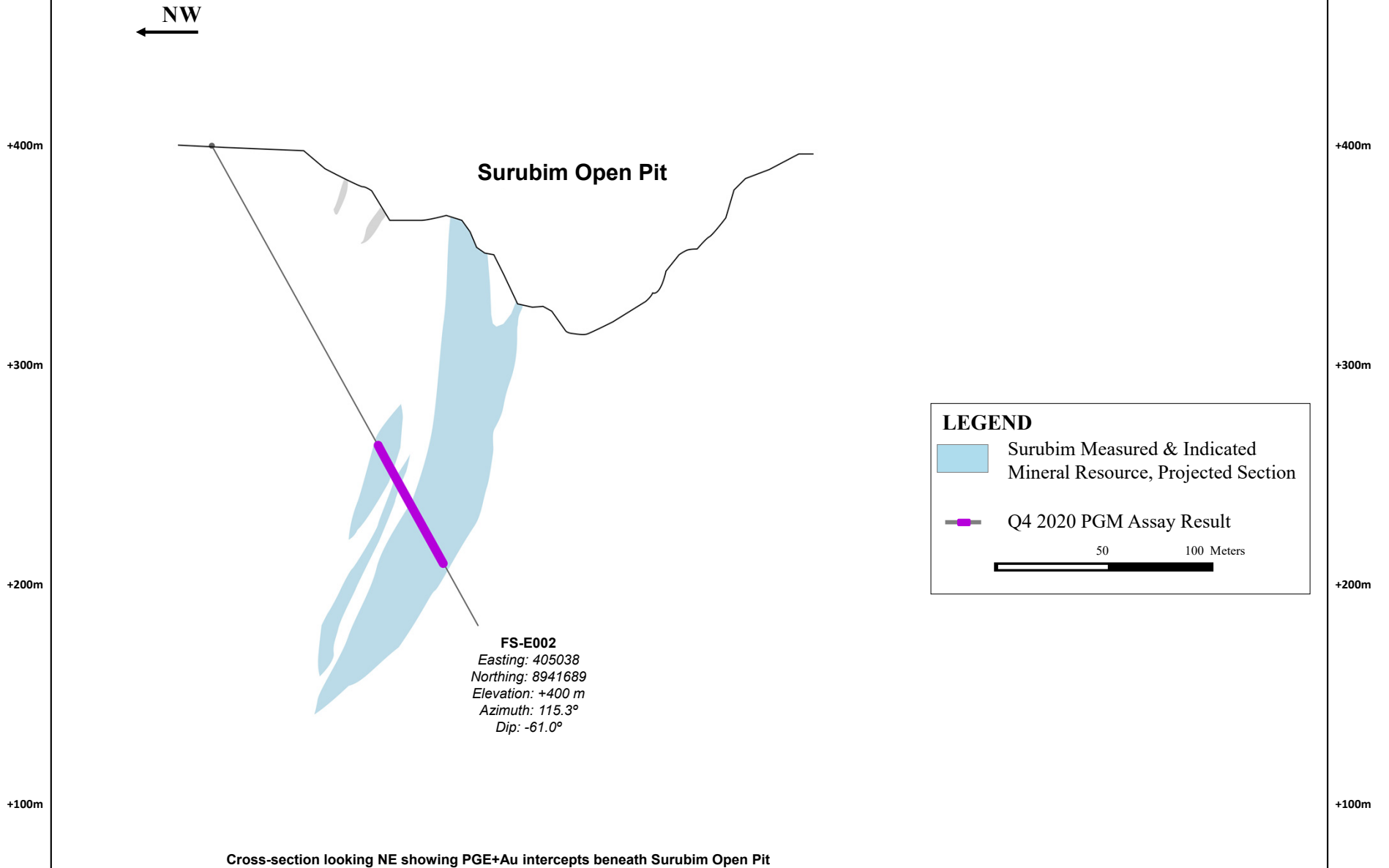


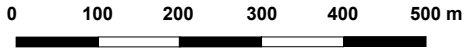
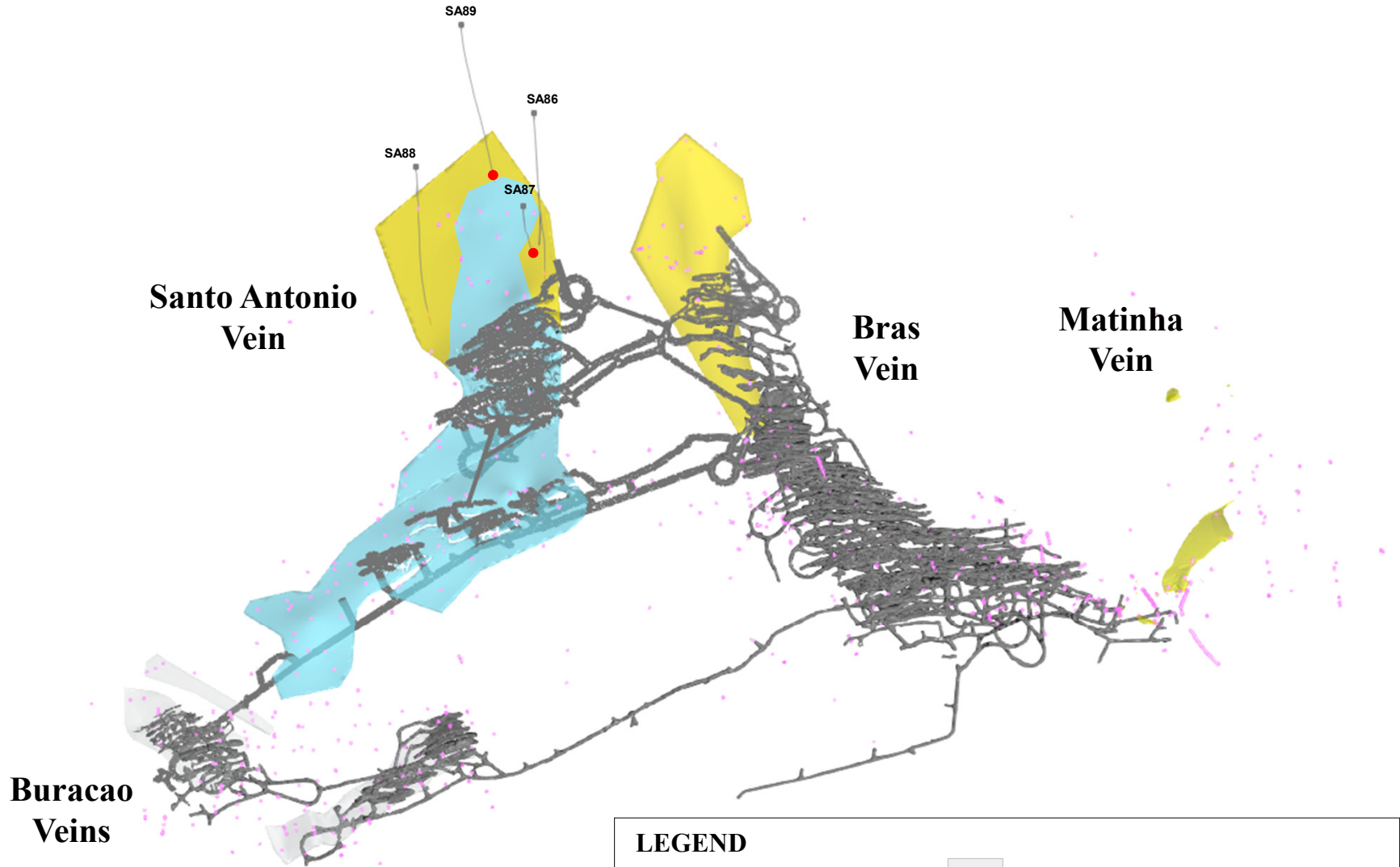
Figure 6

Surubim Open Pit, Northwest-Southeast Section



Mineral resource outline inclusive of mineral reserves. Mineral resources which are not mineral reserves do not have demonstrated economic viability. Please refer to the Company's press release dated November 30, 2020 for additional technical and scientific information related to the Surubim District.

Figure 7
NX Gold Mine, Plan View

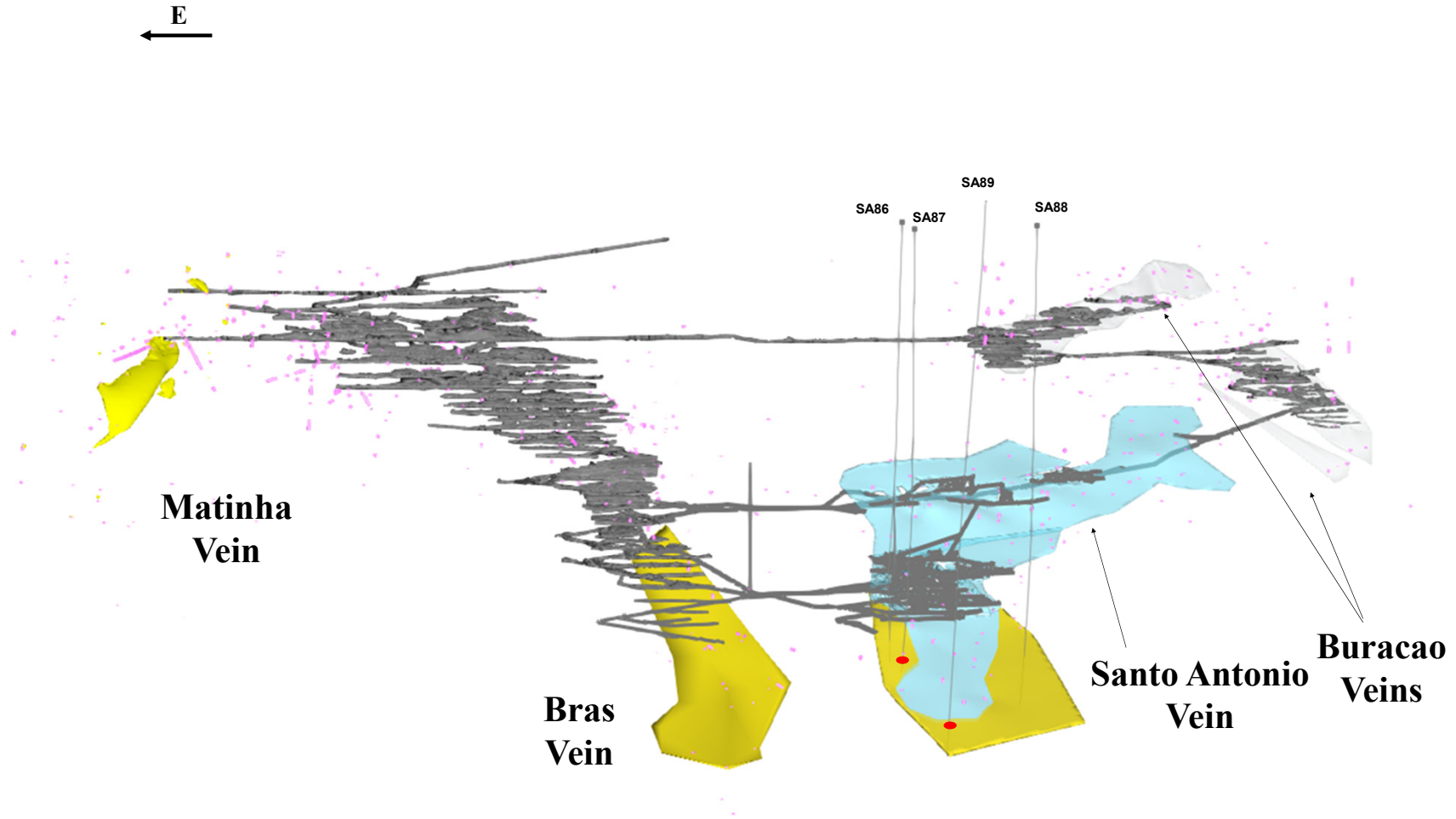


LEGEND

	Vertical Projection of Historical Mineral Zones
	Underground Development
	Q4 2020 Drill Hole Traces
	Q4 2020 Vein Intercept
	Vertical Projection of Inferred Mineral Resource effective date August 31, 2020
	Vertical Projection of Indicated Mineral Resource effective date August 31, 2020
	Previously Announced Intercept

Mineral resource outline(s) inclusive of mineral reserves. Mineral resources which are not mineral reserves do not have demonstrated economic viability. Please refer to the Company's press release dated November 24, 2020 for additional technical and information related to the NX Gold Mine.

Figure 8
NX Gold Mine, East-West Vertical Long Section



LEGEND

- Underground Development
- Q4 2020 Drill Hole Traces
- Q4 2020 Vein Intercept
- Vertical Projection of Historical Mineral Zones
- Vertical Projection of Inferred Mineral Resource effective date August 31, 2020
- Vertical Projection of Indicated Mineral Resource effective date August 31, 2020
- Previously Announced Intercept

Mineral resource outline(s) inclusive of mineral reserves. Mineral resources which are not mineral reserves do not have demonstrated economic viability. Please refer to the Company's press release dated November 24, 2020 for additional technical and information related to the NX Gold Mine.