



## Wesdome Drilling Southeast of Kiena Mine Identifies Potential Bulk Tonnage Underground Target; Returning 2.3 G/T Gold Over 72 M Core Length

TORONTO, May 23, 2023 -- Wesdome Gold Mines Ltd. (TSX: WDO) ("Wesdome" or the "Company") today announces surface exploration drilling results from the Shawkey and Dubuisson zones located east of the Kiena Mine at the Company's 100% owned Kiena Mine Complex in Val d'Or, Quebec.

Since 2021, surface exploration at Kiena has been ramping up with the initial focus on exploration targets proximal to the Kiena Mine. Initially, these drilling programs have been completed along strike (Shawkey zones) or east (Dubuisson zones) from the Kiena mine within the prospective Jacola Formation in order to discover gold-rich zones that could provide additional feed for the Kiena mill. Most recently, surface drilling 2-3 kilometres southeast of the Kiena mine has identified wide zones of low grade gold mineralization potentially amenable to bulk tonnage underground mining similar to other operations in the region (see Figure 1).

### Shawkey Zone

Initial surface drilling completed along strike and deeper than the previously mined Shawkey 10 zone (Old Shawkey mine on Figure 2), intersected wide zones of alteration and mineralization with one hole (S-21-831) returning 2.3 g/t Au over 72.0 m within a diorite (Figure 2). Mineralization, which consists of disseminated pyrite with locally visible gold is associated with stockwork of white narrow quartz-carbonate and tourmaline veins with associated albite and sericite alteration cross-cutting diorite (Figure 3). The mineralization defines a large, low-grade zone defined by increased percentage of stockwork veins and gold grades rather than by individual veins and shear zones. Notably, this style of mineralization and alteration, hosted in diorite, is different from the Kiena Mine further to the west.

The diorite hosted gold mineralization at Shawkey has been extended to 200 metres up dip and along strike (holes S-21-823 and S-22-852) and remains open along strike to the north-west as well as down dip. Highlights of the recent drilling northwest to the Shawkey 10 Zone are listed below and are summarized in Table 1.

- Hole S-21-831: 2.3 g/t over 72.0 m core length (2.1 g/t Au capped\*)
- Hole S-21-823: 2.3 g/t Au over 29.4 m core length (2.1 g/t Au capped\*)
- Hole S-21-852: 3.0 g/t Au over 20.1 m core length (3.0 g/t Au capped\*)

\* All assays capped at 35 g/t. Au. True width cannot be estimated at this stage of the exploration program as the exploration model is not updated for Shawkey.

### Dubuisson Zone

Recent drilling and updating 3D modelling of the Dubuisson Zone has confirmed that the mineralization occurs along shear zones (DUB Zone 1, 2 and 3) and at their intersections. Shear zones are mainly located at the contact between diorite and ultramafic rocks or crosscut diorite. Mineralization is characterized by disseminated pyrite (traces to 7%) with visible gold occurring locally in quartz-carbonate and tourmaline veins (stockwork). Albite and chlorite alteration occur in veins selvages (Figure 4).

Highlights of the recent drilling at Dubuisson Zone are listed below and are summarized in Table 2.

- Hole DB-22-001 (New Zone) : 5.0 g/t Au over 24.0 m core length (4.6 g/t Au capped\*)
- Hole DB-22-002 (DUB Zone 1): 5.0 g/t Au over 9.3 m core length (5.0 g/t Au capped\*, 4.6 m true width)
- Hole DB-22-003 (DUB Zone 2): 9.8 g/t over 25.2 m core length (9.8 g/t Au capped\*, 17.2 m true width)
- Hole DB-22-004 (DUB Zone 3): 11.4 g/t Au over 4.2 m core length (11.4 g/t Au capped\*, 2.6 m true width)

\* All assays capped at 50 g/t Au. True widths are estimated based on 3D model construction. True width cannot be estimated at this stage of the exploration program for DB-22-001.

Warwick Morley-Jepson, Board Chair and Interim CEO commented, "We are pleased with the recent surface exploration results at Shawkey and Dubuisson zones which could potentially increase our resource base in areas adjacent to the mine. These zones present an opportunity to provide a second source of mill feed for the underutilized Kiena mill. Additionally, these zones remain open at depth and along strike and require further exploration. Both of these zones are proximal to the 33 level track drift development that extends over 3 kilometres east of the Kiena mine shaft towards the Dubuisson Zone. These results also continue to show the potential of discovering new zones elsewhere on the Kiena property with more exploration and improving our understanding of the geology.

Elsewhere at the Kiena mine, the Company is following up on multiple initial discoveries made last year, including the south limb of the A Zone and several adjacent hanging wall zones which remain outside the current mineral reserves. Further, the excavation of an exploration ramp from surface to access the near-surface Presqu'île Zone is expected to proceed in H2 2023

after the required permits are secured.

These exploration results, combined with strong execution of the ramp development to Kiena Deep, pave the way for increased production growth in 2024 and beyond."

## TECHNICAL DISCLOSURE

The technical and geoscientific content of this release has been compiled and reviewed by Denys Vermette, P. Geo., (OGQ #564) Exploration Manager of the Company, and a "Qualified Persons" as defined in National Instrument 43-101 -*Standards of Disclosure for Mineral Projects*.

Analytical work was performed by ALS Minerals of Val-d'Or (Quebec), a certified commercial laboratory (Accredited Lab #689). Sample preparation was completed at ALS Minerals in Lachine (Quebec). Assaying comprised fire assay methods with an atomic absorption finish. Any sample assaying >3 g/t Au was rerun by fire assay method with gravimetric finish, and any sample assaying >10 g/t Au was rerun with the metallic sieve method. In addition to laboratory internal duplicates, standards, and blanks, the geology department inserts blind duplicates, standards, and blanks into the sample stream at a frequency of one in twenty to monitor quality control.

## ABOUT WESDOME

Wesdome is a Canadian focused gold producer with two high grade underground assets, the Eagle River mine in Ontario and the recently commissioned Kiena mine in Quebec. The Company also retains meaningful exposure to the Moss Lake gold deposit in Ontario through its equity position in Goldshore Resources Inc. The Company's primary goal is to responsibly leverage this operating platform and high-quality brownfield and greenfield exploration pipeline to build Canada's next intermediate gold producer. Wesdome trades on the Toronto Stock Exchange under the symbol "WDO," with a secondary listing on the OTCQX under the symbol "WDOFF."

### For further information, please contact:

Warwick Morley-Jepson  
Board Chair & Interim CEO  
416-360-3743 ext. 2029  
[w.morley-jepson@wesdome.com](mailto:w.morley-jepson@wesdome.com)

or  
Lindsay Carpenter Dunlop  
VP Investor Relations  
416-360-3743 ext. 2025  
[lindsay.dunlop@wesdome.com](mailto:lindsay.dunlop@wesdome.com)

220 Bay St, Suite 1200  
Toronto, ON, M5J 2W4  
Toll Free: 1-866-4-WDO-TSX  
Phone: 416-360-3743, Fax: 416-360-7620  
Website : [www.wesdome.com](http://www.wesdome.com)

## FORWARD-LOOKING INFORMATION

This news release contains "forward-looking information" which may include, but is not limited to, statements with respect to the benefits of achieving commercial production at Kiena, the Company's expected capital expenditure in 2023, the timing around reaching the Kiena Deep A Zone, the Company's ability to be cash flow positive and its annual production run rate. Often, but not always, forward-looking statements can be identified by the use of words such as "plans", "expects", "is expected", "budget", "scheduled", "estimates", "forecasts", "intends", "anticipates", or "believes" or variations (including negative variations) of such words and phrases, or state that certain actions, events or results "may", "could", "would", "might" or "will" be taken, occur or be achieved. Forward-looking statements involve known and unknown risks, uncertainties and other factors which may cause the actual results, performance or achievements of the Company to be materially different from any future results, performance or achievements expressed or implied by the forward-looking statements. Forward-looking statements contained herein are made as of the date of this press release and the Company disclaims any obligation to update any forward-looking statements, whether as a result of new information, future events or results or otherwise. There can be no assurance that forward-looking statements will prove to be accurate, as actual results and future events could differ materially from those anticipated in such statements. The Company undertakes no obligation to update forward-looking statements if circumstances, management's estimates or opinions should change, except as required by securities legislation. Accordingly, the reader is cautioned not to place undue reliance on forward-looking statements.

**Table 1: Kiena Complex Surface Drilling Assay and Composite Results for Shawkey Zone**

### Composites

SHAWKEY ZONE 10 0.5 gt over 3m						
Hole	Sector	From	To	Core length	Grade (g/t Au)	Cut grade (35 g/t Au)
S-21-822	Zone 10	316.5	325.5	9.00	1.51	1.51
S-21-823	Zone 10	348.6	378	29.40	2.27	2.09
S-21-831	Zone 10	402	474	72.00	2.32	2.07

	<i>Incl.</i>	432.2	439	6.80	3.20	3.20
	<i>Incl.</i>	447	451	4.00	3.82	3.82
	<i>Incl.</i>	455	463.5	8.50	4.02	4.02
S-21-837	Zone 10	419	432.5	13.50	0.57	0.57
S-22-840	Zone 10	395.1	407.25	12.15	0.83	0.83
S-22-842	Zone 10	344.8	348.5	3.70	3.30	3.30
S-22-852	Zone 10	330.5	350.6	20.10	3.00	3.00
	<i>Incl.</i>	330.5	332.7	2.20	8.70	8.70
	<i>Incl.</i>	336.6	340.8	4.20	6.74	6.74
S-22-853	Zone 10	339	341.5	2.50	2.71	2.71
	Zone 10	372.0	380.9	8.90	1.61	1.61
	Zone 10	389.0	394.5	5.50	1.01	1.01
	Zone 10	484.7	487.5	2.80	2.92	2.92
S-22-854	Zone 10	234.8	242.5	7.70	1.74	1.74
	Zone 10	379.5	384	4.50	1.47	1.47
S-22-855	Zone 10	469.8	480.4	10.60	1.39	1.39
	Zone 10	508.2	515.3	7.10	2.34	2.34

### Assays

Hole No.	From (m)	To (m)	Core length (m)	Grade (g/t Au)	Cut grade (35 g/t Au)	Sector
S-21-822	316.5	318	1.5	1.25	1.25	Zone 10
S-21-822	318	319.5	1.5	0.5	0.5	Zone 10
S-21-822	319.5	321	1.5	0.64	0.64	Zone 10
S-21-822	321	322.3	1.3	0.1	0.1	Zone 10
S-21-822	322.3	323.2	0.9	0.01	0.01	Zone 10
S-21-822	323.2	324	0.8	0.18	0.18	Zone 10
S-21-822	324	325.5	1.5	6.51	6.51	Zone 10
Hole No.	From (m)	To (m)	Core length (m)	Grade (g/t Au)	Cut grade (35 g/t Au)	Sector
S-21-823	348.6	350.1	1.5	4.2	4.2	Zone 10
S-21-823	350.1	350.6	0.5	0.93	0.93	Zone 10
S-21-823	350.6	351.1	0.5	2.6	2.6	Zone 10
S-21-823	351.1	352.5	1.4	0.6	0.6	Zone 10
S-21-823	352.5	354	1.5	0.98	0.98	Zone 10
S-21-823	354	355.5	1.5	0.2	0.2	Zone 10
S-21-823	355.5	357	1.5	0.01	0.01	Zone 10
S-21-823	357	358.5	1.5	0.01	0.01	Zone 10
S-21-823	358.5	360	1.5	0	0	Zone 10
S-21-823	360	361.5	1.5	0	0	Zone 10
S-21-823	361.5	363	1.5	0	0	Zone 10
S-21-823	363	364.3	1.3	0.18	0.18	Zone 10
S-21-823	364.3	365.8	1.5	1.81	1.81	Zone 10
S-21-823	365.8	367	1.2	2.25	2.25	Zone 10
S-21-823	367	367.5	0.5	0.68	0.68	Zone 10
S-21-823	367.5	368.8	1.3	4.59	4.59	Zone 10
S-21-823	368.8	370	1.2	0.49	0.49	Zone 10
S-21-823	370	370.8	0.8	3.77	3.77	Zone 10
S-21-823	370.8	372.1	1.3	2.46	2.46	Zone 10
S-21-823	372.1	373.5	1.4	0.2	0.2	Zone 10
S-21-823	373.5	375	1.5	0.01	0.01	Zone 10
S-21-823	375	376.4	1.4	0.01	0.01	Zone 10
S-21-823	376.4	377.3	0.9	40.8	35	Zone 10
S-21-823	377.3	378	0.7	0.27	0.27	Zone 10
Hole No.	From (m)	To (m)	Core length (m)	Grade (g/t Au)	Cut grade (35 g/t Au)	Sector

					g/t Au)	
S-21-831	402	403.5	1.5	0	0	Zone 10
S-21-831	403.5	405	1.5	0	0	Zone 10
S-21-831	405	406.1	1.1	0.04	0.04	Zone 10
S-21-831	406.1	406.9	0.8	0.02	0.02	Zone 10
S-21-831	406.9	408.4	1.5	0.36	0.36	Zone 10
S-21-831	408.4	409.6	1.2	0.01	0.01	Zone 10
S-21-831	409.6	410.6	1	0.06	0.06	Zone 10
S-21-831	410.6	411.9	1.3	49.1	35	Zone 10
S-21-831	411.9	413.3	1.4	0.03	0.03	Zone 10
S-21-831	413.3	414.6	1.3	0.01	0.01	Zone 10
S-21-831	414.6	416.1	1.5	0.01	0.01	Zone 10
S-21-831	416.1	417.6	1.5	0	0	Zone 10
S-21-831	417.6	418.5	0.9	0	0	Zone 10
S-21-831	418.5	419.6	1.1	0.05	0.05	Zone 10
S-21-831	419.6	421.1	1.5	0.01	0.01	Zone 10
S-21-831	421.1	422.1	1	0.04	0.04	Zone 10
S-21-831	422.1	423.2	1.1	0.05	0.05	Zone 10
S-21-831	423.2	424.5	1.3	0	0	Zone 10
S-21-831	424.5	426	1.5	0.29	0.29	Zone 10
S-21-831	426	426.6	0.6	0.08	0.08	Zone 10
S-21-831	426.6	427.2	0.6	6.1	6.1	Zone 10
S-21-831	427.2	427.9	0.7	0.09	0.09	Zone 10
S-21-831	427.9	428.7	0.8	5.19	5.19	Zone 10
S-21-831	428.7	430	1.3	0.02	0.02	Zone 10
S-21-831	430	431	1	0.15	0.15	Zone 10
S-21-831	431	432.2	1.2	0.23	0.23	Zone 10
S-21-831	432.2	433	0.8	2.23	2.23	Zone 10
S-21-831	433	434.2	1.2	1.78	1.78	Zone 10
S-21-831	434.2	435.2	1	2.13	2.13	Zone 10
S-21-831	435.2	436.3	1.1	7.63	7.63	Zone 10
S-21-831	436.3	437	0.7	0.56	0.56	Zone 10
S-21-831	437	437.8	0.8	6.64	6.64	Zone 10
S-21-831	437.8	439	1.2	1.33	1.33	Zone 10
S-21-831	439	440.1	1.1	0.02	0.02	Zone 10
S-21-831	440.1	441.1	1	0.03	0.03	Zone 10
S-21-831	441.1	442.6	1.5	0.01	0.01	Zone 10
S-21-831	442.6	443.5	0.9	0.07	0.07	Zone 10
S-21-831	443.5	444.1	0.6	0.06	0.06	Zone 10
S-21-831	444.1	444.6	0.5	0.45	0.45	Zone 10
S-21-831	444.6	445.7	1.1	0.08	0.08	Zone 10
S-21-831	445.7	447	1.3	0.03	0.03	Zone 10
S-21-831	447	448.4	1.4	6.27	6.27	Zone 10
S-21-831	448.4	449.5	1.1	3.92	3.92	Zone 10
S-21-831	449.5	451	1.5	1.45	1.45	Zone 10
S-21-831	451	452	1	0.29	0.29	Zone 10
S-21-831	452	453	1	0.01	0.01	Zone 10
S-21-831	453	454.2	1.2	0.13	0.13	Zone 10
S-21-831	454.2	455	0.8	0.2	0.2	Zone 10
S-21-831	455	455.5	0.5	5.96	5.96	Zone 10
S-21-831	455.5	456.6	1.1	1.27	1.27	Zone 10
S-21-831	456.6	457.6	1	0.7	0.7	Zone 10
S-21-831	457.6	458.5	0.9	2.66	2.66	Zone 10
S-21-831	458.5	460	1.5	8.06	8.06	Zone 10
S-21-831	460	461.1	1.1	2.32	2.32	Zone 10
S-21-831	461.1	462	0.9	1.98	1.98	Zone 10
S-21-831	462	463.5	1.5	6.86	6.86	Zone 10
S-21-831	463.5	465	1.5	1.78	1.78	Zone 10

S-21-831	465	466.2	1.2	3.54	3.54	Zone 10
S-21-831	466.2	467.2	1	2.57	2.57	Zone 10
S-21-831	467.2	468	0.8	2.76	2.76	Zone 10
S-21-831	468	468.8	0.8	1.84	1.84	Zone 10
S-21-831	468.8	470.2	1.4	2.42	2.42	Zone 10
S-21-831	470.2	471	0.8	2.25	2.25	Zone 10
S-21-831	471	472.5	1.5	0.7	0.7	Zone 10
S-21-831	472.5	474	1.5	1.2	1.2	Zone 10
Hole No.	From (m)	To (m)	Core length (m)	Grade (g/t Au)	Cut grade (35 g/t Au)	Sector
S-22-837	419	420.2	1.2	1.4	1.4	Zone 10
S-22-837	420.2	421.6	1.4	0.36	0.36	Zone 10
S-22-837	421.6	423.1	1.5	0.59	0.59	Zone 10
S-22-837	423.1	424.5	1.4	0.5	0.5	Zone 10
S-22-837	424.5	426	1.5	0.43	0.43	Zone 10
S-22-837	426	427.1	1.1	0.5	0.5	Zone 10
S-22-837	427.1	428.1	1	0.28	0.28	Zone 10
S-22-837	428.1	428.9	0.8	0.28	0.28	Zone 10
S-22-837	428.9	430.1	1.2	0.44	0.44	Zone 10
S-22-837	430.1	431.5	1.4	0.49	0.49	Zone 10
S-22-837	431.5	432.5	1	1.04	1.04	Zone 10
Hole No.	From (m)	To (m)	Core length (m)	Grade (g/t Au)	Cut grade (35 g/t Au)	Sector
S-22-840	395.1	396.1	1	5.64	5.64	Zone 10
S-22-840	396.1	397.5	1.4	0.36	0.36	Zone 10
S-22-840	397.5	399	1.5	0.08	0.08	Zone 10
S-22-840	399	400.5	1.5	0.18	0.18	Zone 10
S-22-840	400.5	402	1.5	0.01	0.01	Zone 10
S-22-840	402	403.5	1.5	0.01	0.01	Zone 10
S-22-840	403.5	405	1.5	0.01	0.01	Zone 10
S-22-840	405	405.8	0.8	0.01	0.01	Zone 10
S-22-840	405.8	407.25	1.45	2.42	2.42	Zone 10
Hole No.	From (m)	To (m)	Core length (m)	Grade (g/t Au)	Cut grade (35 g/t Au)	Sector
S-22-842	344.8	345.3	0.5	0.27	0.27	Zone 10
S-22-842	345.3	346	0.7	0.08	0.08	Zone 10
S-22-842	346	347	1	11.4	11.4	Zone 10
S-22-842	347	348.5	1.5	0.42	0.42	Zone 10
Hole No.	From (m)	To (m)	Core length (m)	Grade (g/t Au)	Cut grade (35 g/t Au)	Sector
S-22-852	330.5	331.5	1	18.95	18.95	Zone 10
S-22-852	331.5	332.1	0.6	0.17	0.17	Zone 10
S-22-852	332.1	332.7	0.6	0.14	0.14	Zone 10
S-22-852	332.7	334.1	1.4	0.01	0.01	Zone 10
S-22-852	334.1	335.1	1	0.01	0.01	Zone 10
S-22-852	335.1	336.6	1.5	0.17	0.17	Zone 10
S-22-852	336.6	337.6	1	1.38	1.38	Zone 10
S-22-852	337.6	339	1.4	16.6	16.6	Zone 10
S-22-852	339	340.3	1.3	2.2	2.2	Zone 10
S-22-852	340.3	340.8	0.5	1.64	1.64	Zone 10
S-22-852	340.8	341.8	1	0.26	0.26	Zone 10
S-22-852	341.8	342.8	1	0.85	0.85	Zone 10
S-22-852	342.8	343.8	1	0.51	0.51	Zone 10
S-22-852	343.8	345	1.2	0.08	0.08	Zone 10

S-22-852	345	346.3	1.3	1.56	1.56	Zone 10
S-22-852	346.3	347	0.7	5.44	5.44	Zone 10
S-22-852	347	348.2	1.2	0.6	0.6	Zone 10
S-22-852	348.2	349.2	1	0.51	0.51	Zone 10
S-22-852	349.2	349.8	0.6	0.35	0.35	Zone 10
S-22-852	349.8	350.6	0.8	4.46	4.46	Zone 10
Hole No.	From (m)	To (m)	Core length (m)	Grade (g/t Au)	Cut grade (35 g/t Au)	Sector
S-22-853	339	339.7	0.7	3.86	3.86	Zone 10
S-22-853	339.7	340.9	1.2	0.44	0.44	Zone 10
S-22-853	340.9	341.5	0.6	5.89	5.89	Zone 10
Hole No.	From (m)	To (m)	Core length (m)	Grade (g/t Au)	Cut grade (35 g/t Au)	Sector
S-22-853	372	373.5	1.5	1.15	1.15	Zone 10
S-22-853	373.5	374.5	1	0.08	0.08	Zone 10
S-22-853	374.5	375	0.5	1.97	1.97	Zone 10
S-22-853	375	375.6	0.6	0.72	0.72	Zone 10
S-22-853	375.6	376.5	0.9	1.45	1.45	Zone 10
S-22-853	376.5	378	1.5	0	0	Zone 10
S-22-853	378	379	1	0	0	Zone 10
S-22-853	379	379.9	0.9	0.15	0.15	Zone 10
S-22-853	379.9	380.9	1	9.65	9.65	Zone 10
Hole No.	From (m)	To (m)	Core length (m)	Grade (g/t Au)	Cut grade (35 g/t Au)	Sector
S-22-853	389	390	1	0.91	0.91	Zone 10
S-22-853	390	391	1	0	0	Zone 10
S-22-853	391	392	1	1.23	1.23	Zone 10
S-22-853	392	393	1	0.87	0.87	Zone 10
S-22-853	393	394.5	1.5	1.7	1.7	Zone 10
Hole No.	From (m)	To (m)	Core length (m)	Grade (g/t Au)	Cut grade (35 g/t Au)	Sector
S-22-853	484.7	485.5	0.8	9.67	9.67	Zone 10
S-22-853	485.5	486.5	1	0.42	0.42	Zone 10
S-22-853	486.5	487.5	1	0.03	0.03	Zone 10
Hole No.	From (m)	To (m)	Core length (m)	Grade (g/t Au)	Cut grade (35 g/t Au)	Sector
S-22-854	234.8	236	1.2	2.91	2.91	Zone 10
S-22-854	236	237.3	1.3	5.9	5.9	Zone 10
S-22-854	237.3	238.5	1.2	0.45	0.45	Zone 10
S-22-854	238.5	239.4	0.9	0.49	0.49	Zone 10
S-22-854	239.4	240.2	0.8	0.35	0.35	Zone 10
S-22-854	240.2	241	0.8	0.35	0.35	Zone 10
S-22-854	241	242.5	1.5	0.47	0.47	Zone 10
Hole No.	From (m)	To (m)	Core length (m)	Grade (g/t Au)	Cut grade (35 g/t Au)	Sector
S-22-854	379.5	380.5	1	0.32	0.32	Zone 10
S-22-854	380.5	381.5	1	5.78	5.78	Zone 10
S-22-854	381.5	382.5	1	0.31	0.31	Zone 10
S-22-854	382.5	384	1.5	0.13	0.13	Zone 10
Hole No.	From (m)	To (m)	Core length (m)	Grade (g/t Au)	Cut grade (35 g/t Au)	Sector
S-22-855	469.8	471.1	1.3	2.14	2.14	Zone 10

S-22-855	471.1	472	0.9	0.02	0.02	Zone 10
S-22-855	472	472.5	0.5	9.61	9.61	Zone 10
S-22-855	472.5	474	1.5	1.16	1.16	Zone 10
S-22-855	474	475.5	1.5	0.14	0.14	Zone 10
S-22-855	475.5	476.2	0.7	4.39	4.39	Zone 10
S-22-855	476.2	477.5	1.3	0.01	0.01	Zone 10
S-22-855	477.5	478.2	0.7	0.22	0.22	Zone 10
S-22-855	478.2	479.4	1.2	0.32	0.32	Zone 10
S-22-855	479.4	480.4	1	1.58	1.58	Zone 10
Hole No.	From (m)	To (m)	Core length (m)	Grade (g/t Au)	Cut grade (35 g/t Au)	Sector
S-22-855	508.2	509.4	1.2	2.13	2.13	Zone 10
S-22-855	509.4	510.3	0.9	0.42	0.42	Zone 10
S-22-855	510.3	511.2	0.9	0.02	0.02	Zone 10
S-22-855	511.2	512.5	1.3	7.35	7.35	Zone 10
S-22-855	512.5	513.9	1.4	0.01	0.01	Zone 10
S-22-855	513.9	515.3	1.4	2.93	2.93	Zone 10

Table 2: Kiena Complex Surface Drilling Assay and Composite Results for Dubuisson Zone

Composites

DUBUISSON ZONE 3 gt over 3m							
Hole No.	Name zone	From (m)	To (m)	Core length (m)	Estimated true width (m)	Grade (g/t Au)	Cut grade (50 g/t Au)
DB-22-001	NEW AREA	73.0	97.0	24.00		5.01	4.60
	DUB_2	194.5	202.5	8.00	5.55	8.14	8.14
DB-22-002	NEW AREA	159.3	164.6	5.30		3.90	3.90
	NEW AREA	175.3	181.0	5.70		4.06	4.06
	DUB_1	201.6	210.9	9.30	4.59	4.98	4.98
	DUB_2	241.9	247.5	5.60	3.02	11.96	11.87
DB-22-003	NEW AREA	72.3	75.7	3.40		4.12	4.12
	NEW AREA	87.0	93.5	6.50		3.50	3.50
	DUB_2	184.5	209.7	25.20	17.22	9.80	9.80
	<i>Incl.</i>	185.7	189	3.30	2.05	17.26	17.26
	<i>Incl.</i>	191	194	3.00	1.91	10.42	10.42
	<i>Incl.</i>	201.7	209.7	8.00	5.47	12.95	12.95
DB-22-004	DUB_3	250.5	254.7	4.20	2.57	11.43	11.43
DB-22-005	DUB_3	257.7	263.1	5.40	3.51	5.17	5.17
DB-22-009	NEW AREA	452.3	457.9	5.60		3.27	3.27
DB-22-011	NEW AREA	28.7	47.0	18.30		5.44	5.44
	<i>Incl.</i>	39.5	47.0	7.50		7.51	7.51
	NEW AREA	68.7	75.6	6.90		4.54	4.54

Assays

Hole No.	From (m)	To (m)	Core length (m)	Grade (g/t Au)	Cut grade (50 g/t Au)	Name zone
DB-22-001	73	74	1	10	10	NEW AREA
DB-22-001	74	75	1	0.17	0.17	NEW AREA
DB-22-001	75	76	1	6.39	6.39	NEW AREA
DB-22-001	76	77.3	1.3	9.9	9.9	NEW AREA
DB-22-001	77.3	78	0.7	0.1	0.1	NEW AREA
DB-22-001	78	79	1	58.8	50	NEW AREA
DB-22-001	79	80	1	1.98	1.98	NEW AREA
DB-22-001	80	81	1	1.54	1.54	NEW AREA
DB-22-001	81	82.05	1.05	1.96	1.96	NEW AREA
DB-22-001	82.05	83	0.95	0.81	0.81	NEW AREA
DB-22-001	83	84	1	1.62	1.62	NEW AREA
DB-22-001	84	85	1	0.02	0.02	NEW AREA
DB-22-001	85	86.2	1.2	0.02	0.02	NEW AREA
DB-22-001	86.2	87.6	1.4	3.03	3.03	NEW AREA
DB-22-001	87.6	88.6	1	5.89	5.89	NEW AREA
DB-22-001	88.6	90	1.4	0.16	0.16	NEW AREA
DB-22-001	90	91	1	2.94	2.94	NEW AREA
DB-22-001	91	92	1	3.97	3.97	NEW AREA
DB-22-001	92	93	1	3.01	3.01	NEW AREA
DB-22-001	93	93.8	0.8	0.59	0.59	NEW AREA
DB-22-001	93.8	94.8	1	0.35	0.35	NEW AREA
DB-22-001	94.8	95.8	1	0	0	NEW AREA
DB-22-001	95.8	97	1.2	2.26	2.26	NEW AREA
Hole No.	From (m)	To (m)	Core length (m)	Grade (g/t Au)	Cut grade (50 g/t Au)	Name zone
DB-22-001	194.5	196	1.5	1.3	1.3	DUB_2
DB-22-001	196	197	1	0.46	0.46	DUB_2
DB-22-001	197	198	1	0.96	0.96	DUB_2
DB-22-001	198	199.5	1.5	28.2	28.2	DUB_2
DB-22-001	199.5	201	1.5	11.6	11.6	DUB_2
DB-22-001	201	202.5	1.5	1.39	1.39	DUB_2
Hole No.	From (m)	To (m)	Core length (m)	Grade (g/t Au)	Cut grade (50 g/t Au)	Name zone
DB-22-002	159.3	160.4	1.1	5.48	5.48	NEW AREA
DB-22-002	160.4	161.4	1	6.52	6.52	NEW AREA
DB-22-002	161.4	162.4	1	2.1	2.1	NEW AREA
DB-22-002	162.4	163.4	1	4.73	4.73	NEW AREA
DB-22-002	163.4	164.6	1.2	1.06	1.06	NEW AREA
Hole No.	From (m)	To (m)	Core length (m)	Grade (g/t Au)	Cut grade (50 g/t Au)	Name zone
DB-22-002	175.3	176.5	1.2	6.21	6.21	NEW AREA
DB-22-002	176.5	177.6	1.1	5.01	5.01	NEW AREA
DB-22-002	177.6	178.6	1	2	2	NEW AREA
DB-22-002	178.6	180	1.4	4.11	4.11	NEW AREA
DB-22-002	180	181	1	2.4	2.4	NEW AREA
Hole No.	From (m)	To (m)	Core length (m)	Grade (g/t Au)	Cut grade (50 g/t Au)	Name zone
DB-22-002	201.6	203	1.4	2.91	2.91	DUB_1
DB-22-002	203	204	1	6.42	6.42	DUB_1
DB-22-002	204	205	1	10.55	10.55	DUB_1
DB-22-002	205	206.2	1.2	0.5	0.5	DUB_1
DB-22-002	206.2	207.2	1	12.45	12.45	DUB_1



DB-22-002	207.2	208.1	0.9	2.25	2.25	DUB_1
DB-22-002	208.1	209.1	1	2.6	2.6	DUB_1
DB-22-002	209.1	210.4	1.3	0.07	0.07	DUB_1
DB-22-002	210.4	210.9	0.5	14.95	14.95	DUB_1
Hole No.	From (m)	To (m)	Core length (m)	Grade (g/t Au)	Cut grade (50 g/t Au)	Name zone
DB-22-002	241.9	243	1.1	1.93	1.93	DUB_2
DB-22-002	243	244	1	50.5	50	DUB_2
DB-22-002	244	245	1	0.13	0.13	DUB_2
DB-22-002	245	246.2	1.2	9.02	9.02	DUB_2
DB-22-002	246.2	247.5	1.3	2.6	2.6	DUB_2
Hole No.	From (m)	To (m)	Core length (m)	Grade (g/t Au)	Cut grade (50 g/t Au)	Name zone
DB-22-003	72.3	73.7	1.4	2.17	2.17	NEW AREA
DB-22-003	73.7	75	1.3	7.69	7.69	NEW AREA
DB-22-003	75	75.7	0.7	1.38	1.38	NEW AREA
Hole No.	From (m)	To (m)	Core length (m)	Grade (g/t Au)	Cut grade (50 g/t Au)	Name zone
DB-22-003	87	88.5	1.5	6.25	6.25	NEW AREA
DB-22-003	88.5	89.5	1	0.83	0.83	NEW AREA
DB-22-003	89.5	90.5	1	1.78	1.78	NEW AREA
DB-22-003	90.5	91.5	1	1.68	1.68	NEW AREA
DB-22-003	91.5	92.8	1.3	0.74	0.74	NEW AREA
DB-22-003	92.8	93.5	0.7	11.65	11.65	NEW AREA
Hole No.	From (m)	To (m)	Core length (m)	Grade (g/t Au)	Cut grade (50 g/t Au)	Name zone
DB-22-003	184.5	185.7	1.2	1.4	1.4	DUB_2
DB-22-003	185.7	187	1.3	29.6	29.6	DUB_2
DB-22-003	187	188	1	9.14	9.14	DUB_2
DB-22-003	188	189	1	9.33	9.33	DUB_2
DB-22-003	189	190	1	2.25	2.25	DUB_2
DB-22-003	190	191	1	2.97	2.97	DUB_2
DB-22-003	191	192	1	4.48	4.48	DUB_2
DB-22-003	192	193	1	21.9	21.9	DUB_2
DB-22-003	193	194	1	4.87	4.87	DUB_2
DB-22-003	194	195	1	0.07	0.07	DUB_2
DB-22-003	195	196	1	7.36	7.36	DUB_2
DB-22-003	196	197	1	2.86	2.86	DUB_2
DB-22-003	197	197.9	0.9	0.38	0.38	DUB_2
DB-22-003	197.9	198.9	1	32.9	32.9	DUB_2
DB-22-003	198.9	199.9	1	2.58	2.58	DUB_2
DB-22-003	199.9	200.7	0.8	1.93	1.93	DUB_2
DB-22-003	200.7	201.7	1	0.63	0.63	DUB_2
DB-22-003	201.7	202.5	0.8	11.75	11.75	DUB_2
DB-22-003	202.5	203.5	1	40.5	40.5	DUB_2
DB-22-003	203.5	204.5	1	14.05	14.05	DUB_2
DB-22-003	204.5	205.7	1.2	1.82	1.82	DUB_2
DB-22-003	205.7	206.7	1	1.14	1.14	DUB_2
DB-22-003	206.7	207.7	1	15.2	15.2	DUB_2
DB-22-003	207.7	208.7	1	17.25	17.25	DUB_2
DB-22-003	208.7	209.7	1	3.89	3.89	DUB_2
Hole No.	From (m)	To (m)	Core length (m)	Grade (g/t Au)	Cut grade (50 g/t Au)	Name zone
DB-22-004	250.5	251.5	1	8	8	DUB_3

DB-22-004	251.5	252.5	1	3.05	3.05	DUB_3
DB-22-004	252.5	253.7	1.2	4.03	4.03	DUB_3
DB-22-004	253.7	254.7	1	32.1	32.1	DUB_3
<b>Hole No.</b>	<b>From (m)</b>	<b>To (m)</b>	<b>Core length (m)</b>	<b>Grade (g/t Au)</b>	<b>Cut grade (50 g/t Au)</b>	<b>Name zone</b>
DB-22-005	257.7	258.2	0.5	1.03	1.03	DUB_3
DB-22-005	258.2	259.4	1.2	1.48	1.48	DUB_3
DB-22-005	259.4	260.4	1	1.66	1.66	DUB_3
DB-22-005	260.4	261.2	0.8	0.07	0.07	DUB_3
DB-22-005	261.2	262.1	0.9	0.04	0.04	DUB_3
DB-22-005	262.1	263.1	1	23.9	23.9	DUB_3
<b>Hole No.</b>	<b>From (m)</b>	<b>To (m)</b>	<b>Core length (m)</b>	<b>Grade (g/t Au)</b>	<b>Cut grade (50 g/t Au)</b>	<b>Name zone</b>
DB-22-009	452.3	453.3	1	6.52	6.52	NEW AREA
DB-22-009	453.3	454.5	1.2	1.98	1.98	NEW AREA
DB-22-009	454.5	455.5	1	0.96	0.96	NEW AREA
DB-22-009	455.5	456.4	0.9	7.82	7.82	NEW AREA
DB-22-009	456.4	457.4	1	0.02	0.02	NEW AREA
DB-22-009	457.4	457.9	0.5	1.44	1.44	NEW AREA
<b>Hole No.</b>	<b>From (m)</b>	<b>To (m)</b>	<b>Core length (m)</b>	<b>Grade (g/t Au)</b>	<b>Cut grade (50 g/t Au)</b>	<b>Name zone</b>
DB-22-011	28.7	29.7	1	7.81	7.81	NEW AREA
DB-22-011	29.7	30.7	1	0.09	0.09	NEW AREA
DB-22-011	30.7	31.7	1	29.5	29.5	NEW AREA
DB-22-011	31.7	32.6	0.9	0.41	0.41	NEW AREA
DB-22-011	32.6	33.6	1	2.86	2.86	NEW AREA
DB-22-011	33.6	34.6	1	0.14	0.14	NEW AREA
DB-22-011	34.6	36	1.4	1.44	1.44	NEW AREA
DB-22-011	36	37	1	0.31	0.31	NEW AREA
DB-22-011	37	38.5	1.5	0.02	0.02	NEW AREA
DB-22-011	38.5	39.5	1	0.06	0.06	NEW AREA
DB-22-011	39.5	40.5	1	2.83	2.83	NEW AREA
DB-22-011	40.5	42	1.5	1.2	1.2	NEW AREA
DB-22-011	42	43	1	0.13	0.13	NEW AREA
DB-22-011	43	44	1	39.4	39.4	NEW AREA
DB-22-011	44	45	1	3.72	3.72	NEW AREA
DB-22-011	45	45.9	0.9	0.1	0.1	NEW AREA
DB-22-011	45.9	47	1.1	7.59	7.59	NEW AREA
<b>Hole No.</b>	<b>From (m)</b>	<b>To (m)</b>	<b>Core length (m)</b>	<b>Grade (g/t Au)</b>	<b>Cut grade (50 g/t Au)</b>	<b>Name zone</b>
DB-22-011	68.7	69.7	1	12.25	12.25	NEW AREA
DB-22-011	69.7	70.7	1	1.3	1.3	NEW AREA
DB-22-011	70.7	72	1.3	4.95	4.95	NEW AREA
DB-22-011	72	73	1	1.1	1.1	NEW AREA
DB-22-011	73	74	1	3.69	3.69	NEW AREA
DB-22-011	74	74.8	0.8	3.26	3.26	NEW AREA
DB-22-011	74.8	75.6	0.8	4.91	4.91	NEW AREA

Photos accompanying this announcement are available at:

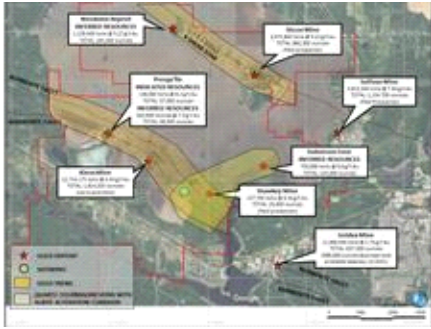
<https://www.globenewswire.com/NewsRoom/AttachmentNg/7b03279d-6d33-44c4-b1fa-c19a8f830106>

<https://www.globenewswire.com/NewsRoom/AttachmentNg/8cf63329-7b6d-4bdc-b220-d48acd4299c8>

<https://www.globenewswire.com/NewsRoom/AttachmentNg/f0b24892-f33c-4d1f-86be-ff6e3d585e90>

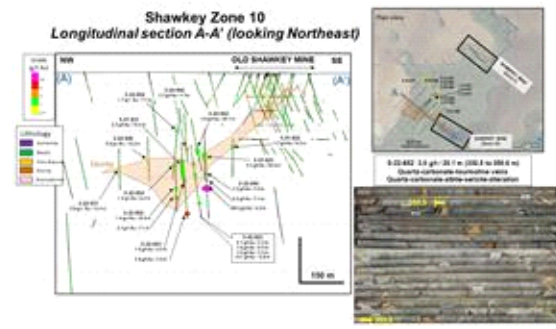
PDF available:

Figure 1



Plan View of Kiena Complex

Figure 2



Longitudinal Section of Shawkey Zone

Figure 3

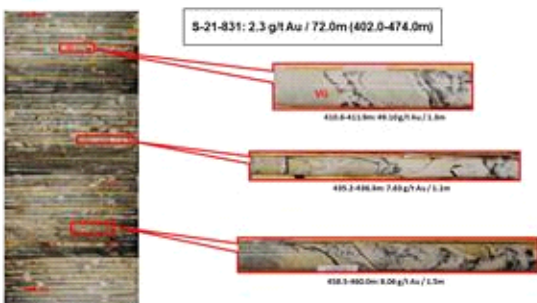
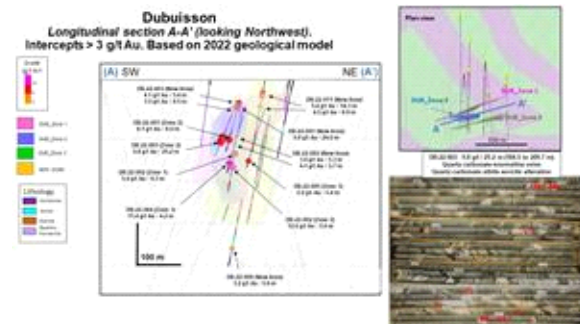


Figure 4



Photograph of Shawkey Zone Drill Core

Longitudinal Section of Dubuisson Zone