

Table 1

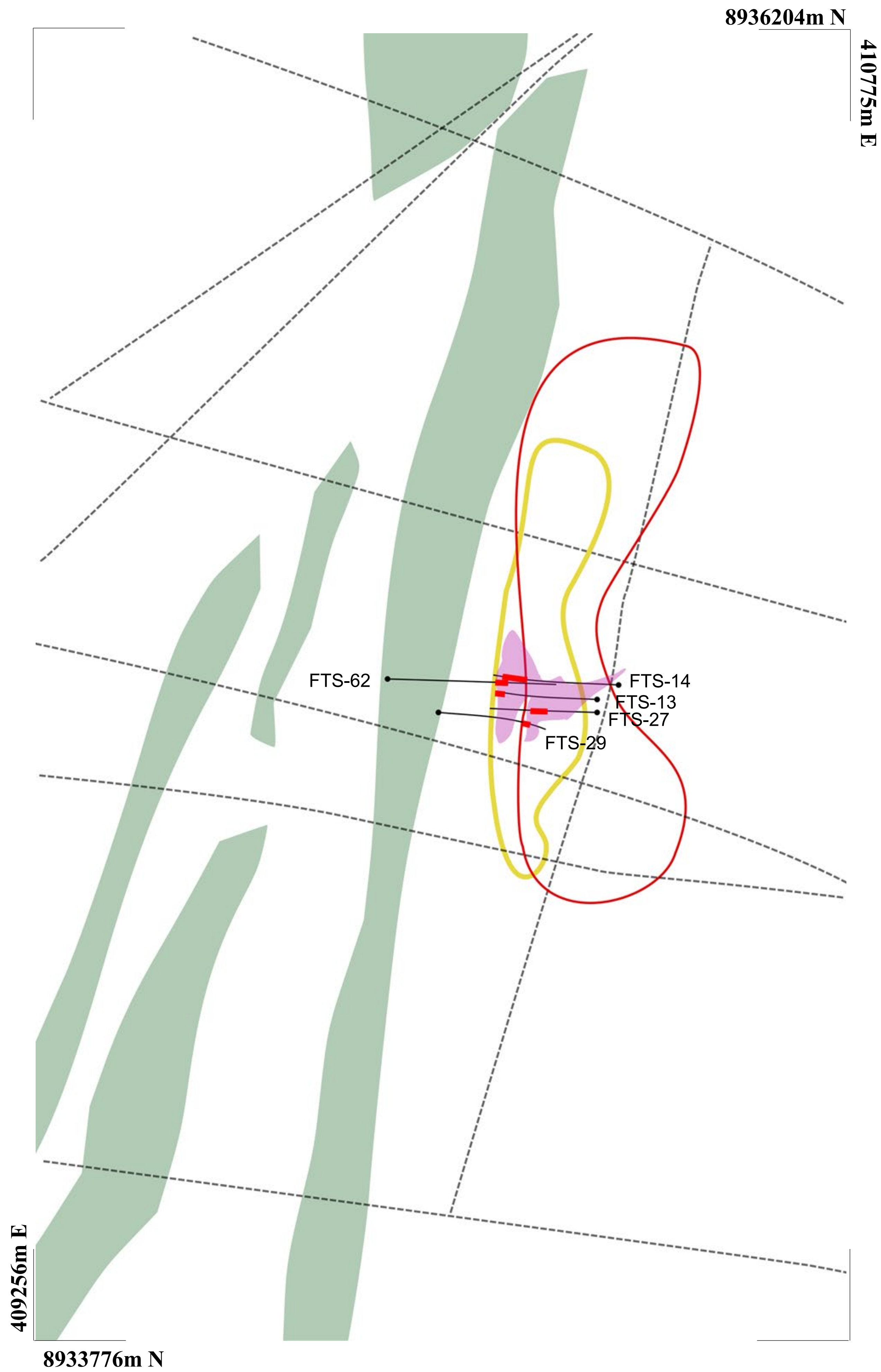
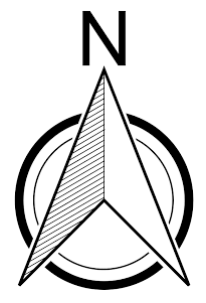
Summary of Highlights

Mine / District	Target / System	Estimated Zone / Exploration Target Dimensions	Highlight Intercept(s)	Significance
<u>Regional Exploration Program</u>				
Terra do Sal System	Surubim District	800m x 240m <i>(surface expression)</i>	FTS-62: 25.0m @ 1.02% Cu incl. 6.0m @ 1.38% Cu	Refining of drill targets utilizing surface geophysical methods – follow-up drilling planned H2 2021.
C4 System	Surubim District	2.2km x 200m <i>(surface expression)</i>	FC4-05: 13.6m @ 1.24% Cu incl. 4.0m @ 1.79% Cu	Copper mineralization identified from surface to ~700m depth, focusing on high-grade zones using borehole EM.
<u>In-Mine and Near-Mine Exploration Programs</u>				
Pilar Mine	Deepening Extension	900m x 600m x 15m <i>localized thickening, open to depth</i>	FC48142 20.9m @ 5.16% Cu incl. 3.0m @ 10.02%Cu FC48173B: 7.2m @ 2.14% Cu incl. 4.0m @ 3.08% Cu	High-grade continuity in south-central zone and deepest intercept to date, located ~150 meters below the 2020 inferred mineral resource limit.
	Deepening Extension Offset	600m x 350m x 15m <i>localized thickening, open along strike and to depth</i>	FC5518: 22.0m @ 1.02% Cu incl. 4.0m @ 2.02% Cu FC5519: 22.2m @ 2.32% Cu incl. 8.0m @ 3.52% Cu	Offset lens, located ~70m east and parallel to the defined Deepening Extension mineralization.
Vermelhos Mine	“Novo” Zone Discovery beneath Vermelhos Mine	200m in strike length <i>open to depth and along strike</i>	FVS-922: 13.8m @ 2.62% Cu incl. 4.0m @ 5.52% Cu FVS-872: 4.2m @ 5.72% Cu incl. 2.0m @ 9.60% Cu	New high-grade lens discovery located ~200 meters below current infrastructure of the Vermelhos Mine.
	Near-development Extensions within Vermelhos Mine	35m x 17m x 10m <i>open to depth</i>	FVS-1229: 9.2m @ 3.64% Cu incl. 4.0m @ 6.23% Cu	Extension of high-grade continuity of Toboggan orebody, adjacent to existing infrastructure
	Southern Vermelhos Corridor	700m x 300m x 400m <i>open to depth</i>	FSI-105: 4.7m @ 2.73% Cu and 6.4m @ 1.67% Cu	Systematic drill program ongoing.
<u>Past Producing Mine Re-evaluation</u>				
Surubim District	Lagoa da Mina	100m x 45m x 70m <i>open north down plunge and to depth</i>	FLM-16: 15.0m @ 3.03% Cu incl. 4.0m @ 4.44% Cu	Open north-plunging high-grade lens up to 4% Cu, ~70 meters beneath the limits of the historic open pit.
Pilar District	Suçuarana Norte	400m x 200m x 30m <i>open north down plunge and to depth</i>	FAS-102: 37.0m @ 0.87% Cu	Envelope of 0.80% to 1.00% Cu mineralization beneath the historic open pit.

Note: Please review Table 1 in conjunction with the full April 29, 2021 news release including, but not limited to, associated assay tables and figures for additional context.

Figure 1

Terra do Sal, Surubim District
(Drilling From Surface)



LEGEND

 Ultramafic Outcrop

 Mafic Intrusions

 Interpreted Structures

 Copper in Soil Above 90th Percentile

 10 mV/V IP signature of interpreted mineralization

 Q1 2021 Exploration Results

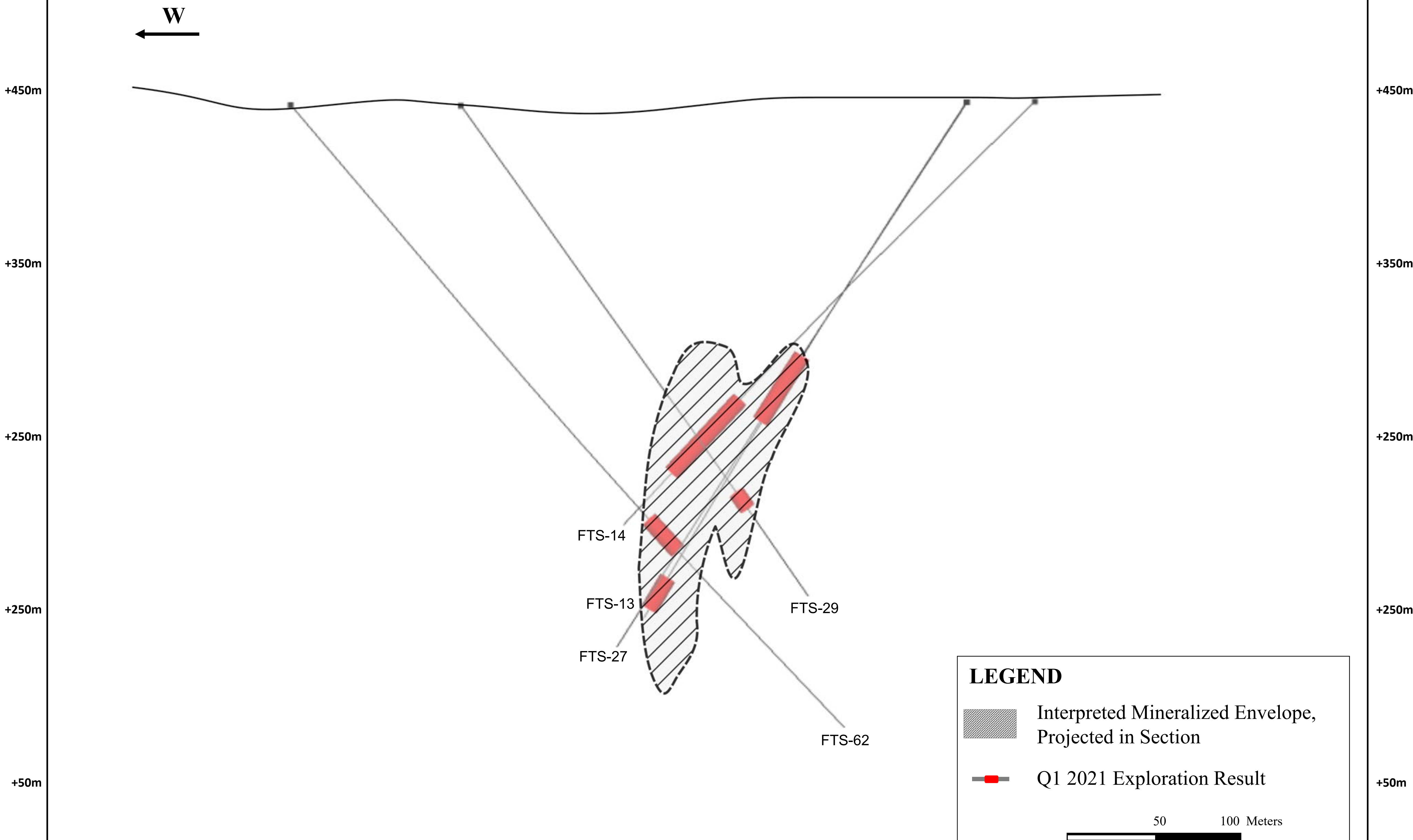
250

500 Meters

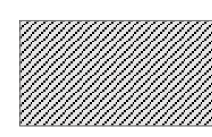



Figure 2


Terra do Sal, Surubim District, East-West Section



LEGEND

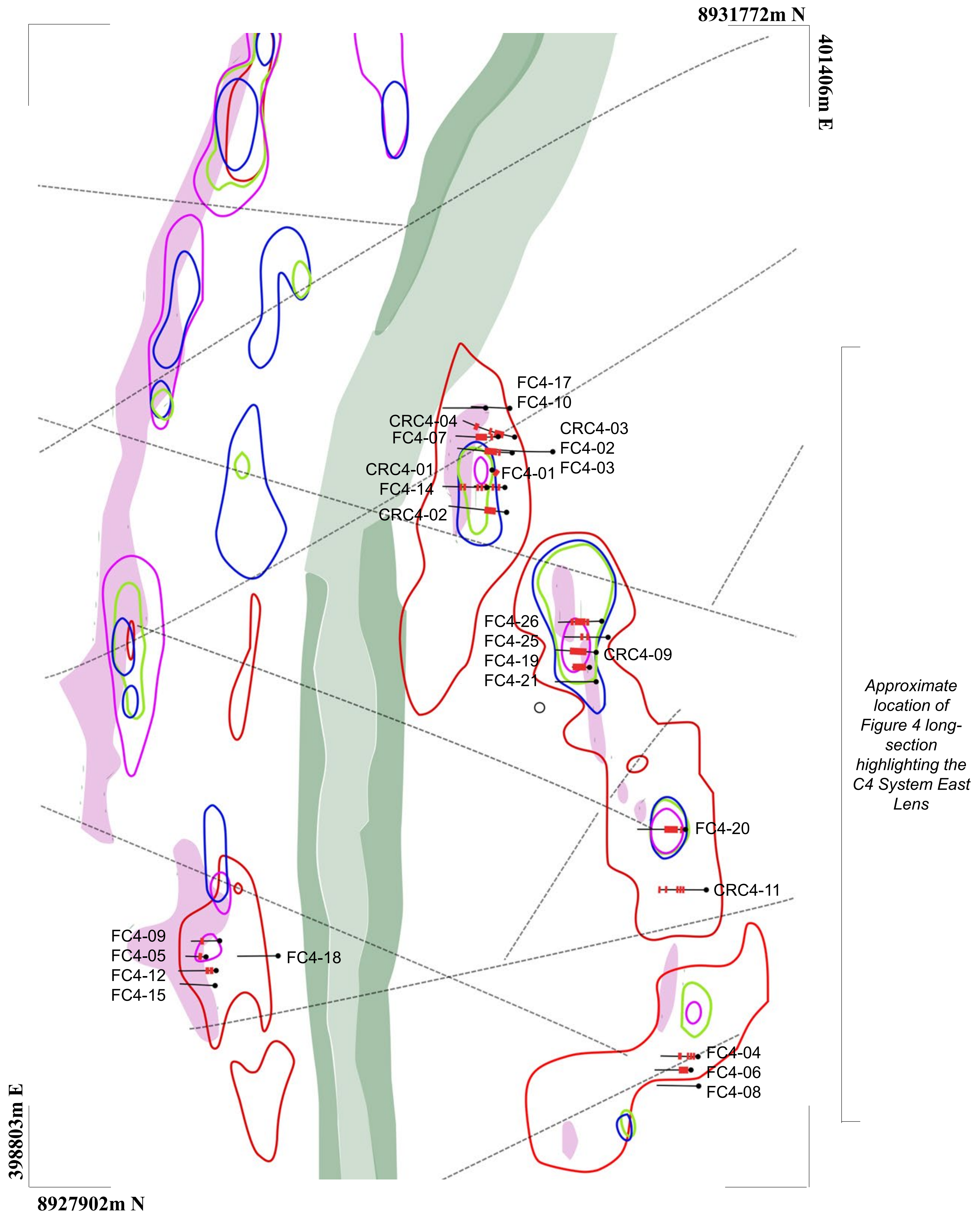
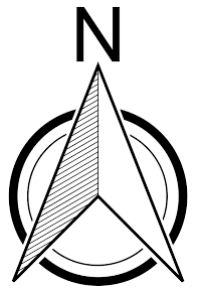
-  Interpreted Mineralized Envelope, Projected in Section
-  Q1 2021 Exploration Result

50 100 Meters



Note:
Terra do Sal interpreted mineralized projection is based on data compilation work which includes review of geological controls, structural analysis and copper mineralization identified during the Company's technical programs. The interpretation and boundary limits do not imply continuity of mineralization, or actual thickness of mineralization which has yet to be defined.

Figure 3
C4 System, Surubim District
(Drilling From Surface)



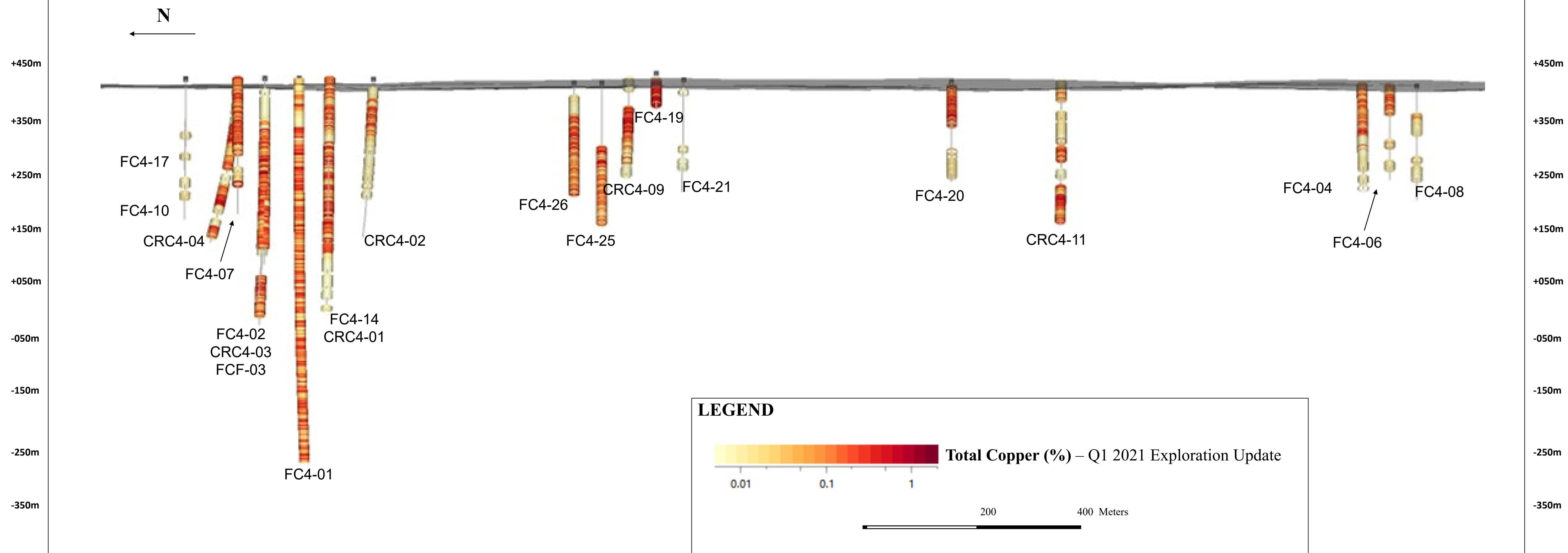
LEGEND

- Ultramafic Outcrop
- Mafic Intrusion
- Interpreted Structure

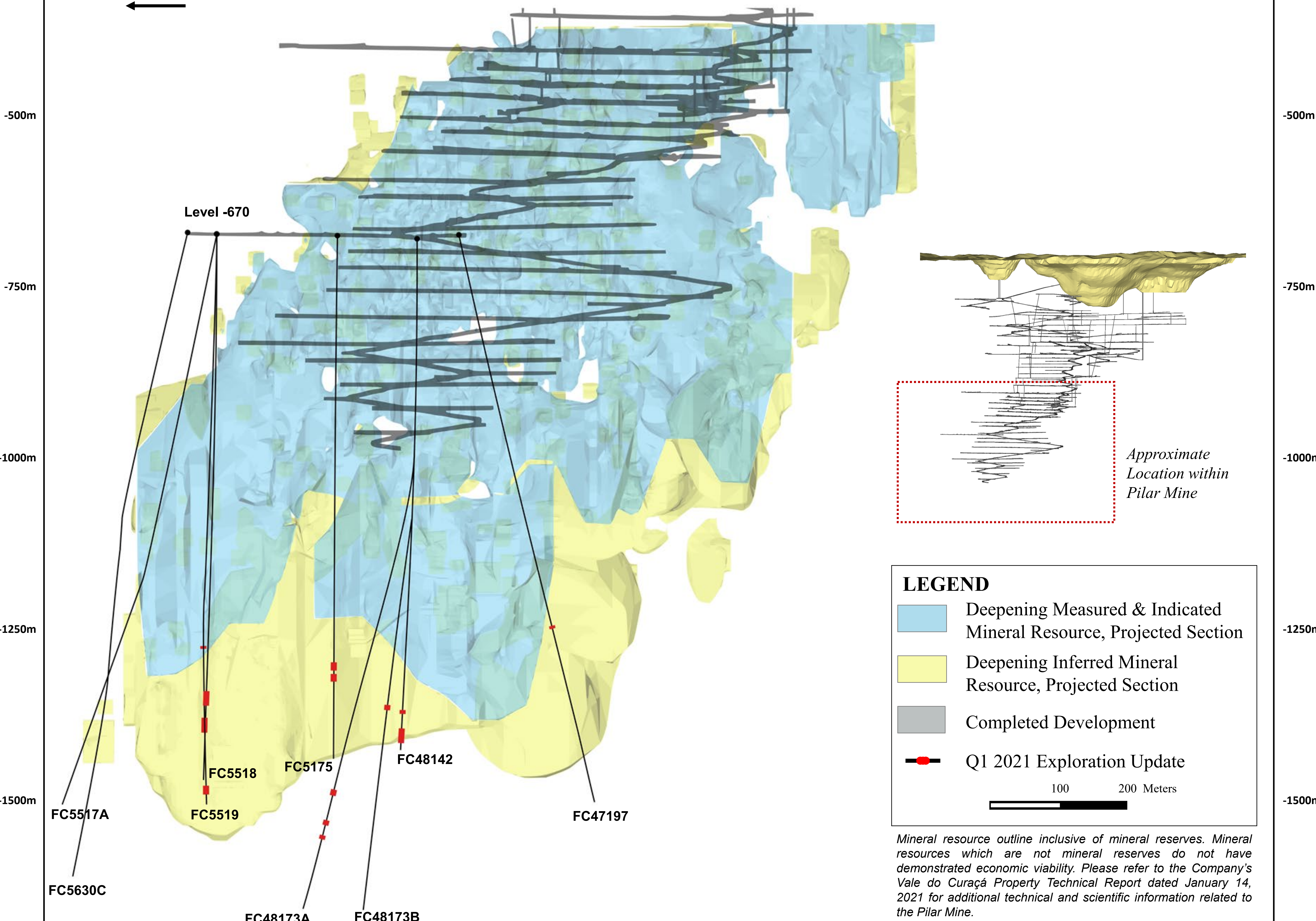
- Soil Geochemistry Above 90th Percentile:
- Copper
 - Cobalt
 - Nickel
 - Chrome

- Q1 2021 Exploration Results
- 500 1,000 Meters
-

Figure 4
C4 System, North-South Long Section



Deepening Extension, North-South Long Section



LEGEND

- Deepening Measured & Indicated Mineral Resource, Projected Section
- Deepening Inferred Mineral Resource, Projected Section
- Completed Development
- Q1 2021 Exploration Update

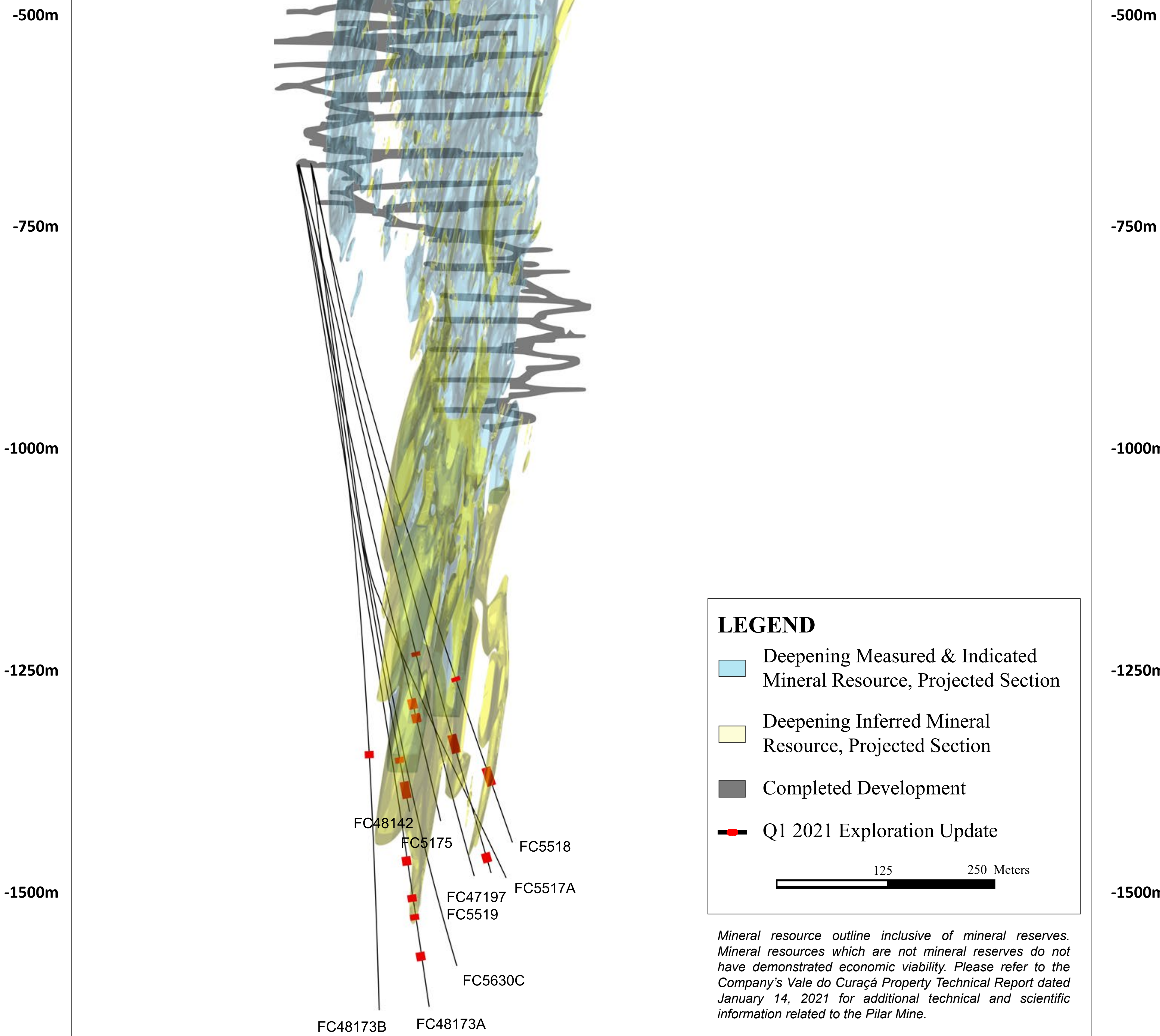
100 200 Meters

Mineral resource outline inclusive of mineral reserves. Mineral resources which are not mineral reserves do not have demonstrated economic viability. Please refer to the Company's Vale do Curaçá Property Technical Report dated January 14, 2021 for additional technical and scientific information related to the Pilar Mine.

Figure 6

Deepening Extension, WSW-ENE Composite Section

WSW
←



LEGEND

- Deepening Measured & Indicated Mineral Resource, Projected Section
- Deepening Inferred Mineral Resource, Projected Section
- Completed Development
- Q1 2021 Exploration Update

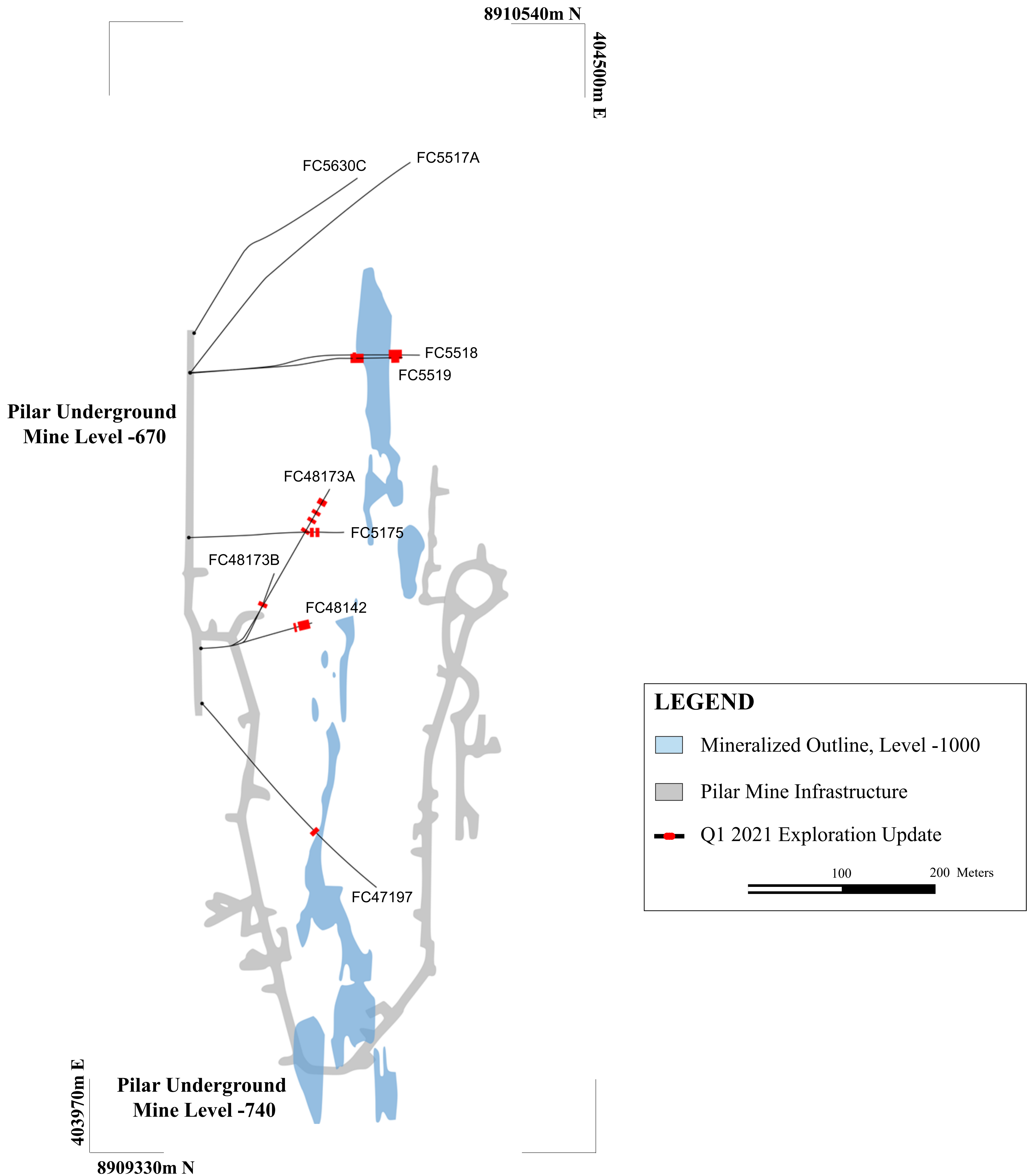
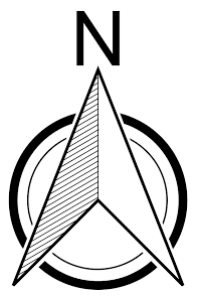
125 250 Meters

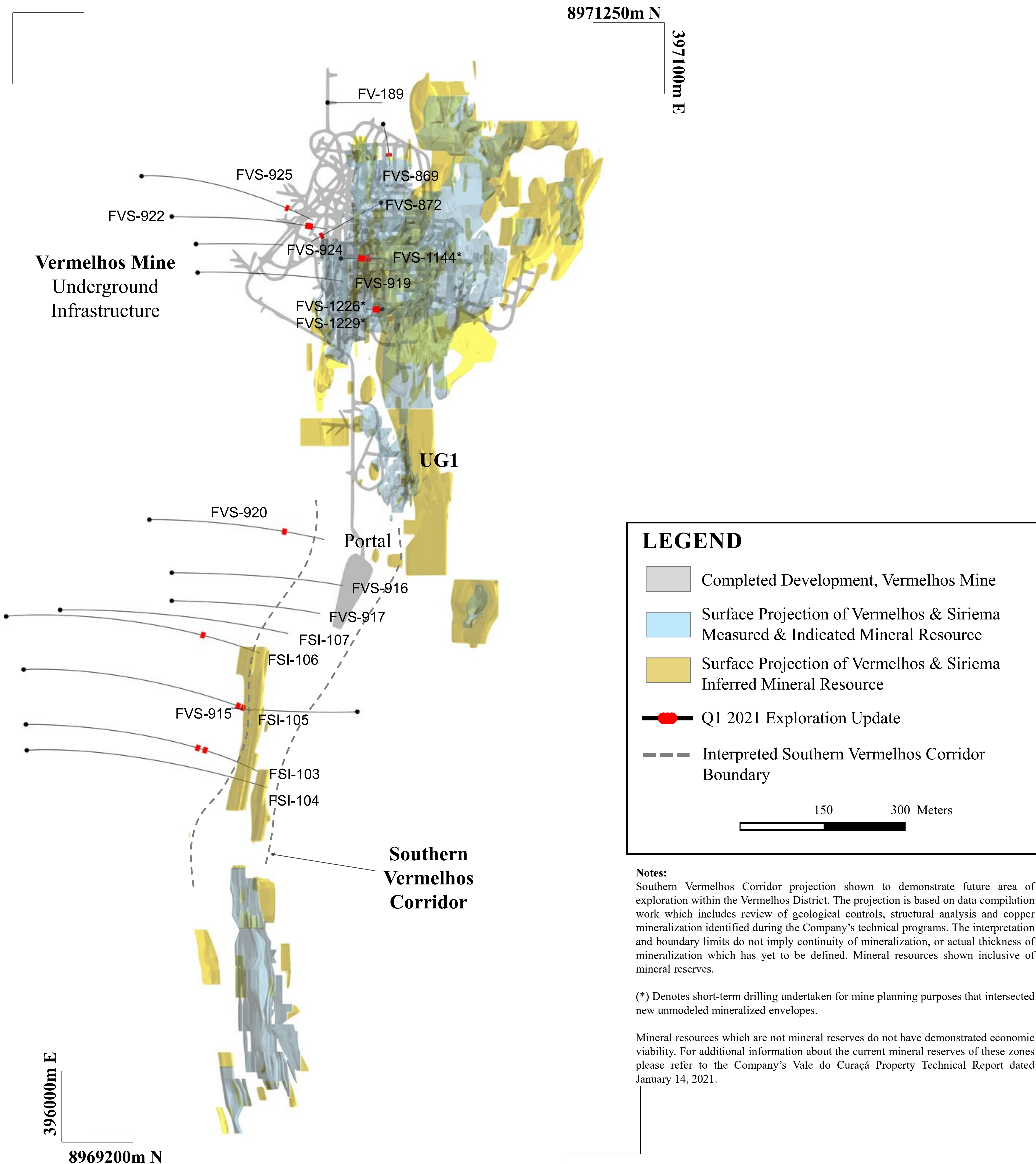
Mineral resource outline inclusive of mineral reserves. Mineral resources which are not mineral reserves do not have demonstrated economic viability. Please refer to the Company's Vale do Curaçá Property Technical Report dated January 14, 2021 for additional technical and scientific information related to the Pilar Mine.

Figure 7

Pilar Mine, Deepening Extension

(Drilling from Level -670)





Notes:
 Southern Vermelhos Corridor projection shown to demonstrate future area of exploration within the Vermelhos District. The projection is based on data compilation work which includes review of geological controls, structural analysis and copper mineralization identified during the Company's technical programs. The interpretation and boundary limits do not imply continuity of mineralization, or actual thickness of mineralization which has yet to be defined. Mineral resources shown inclusive of mineral reserves.

(*) Denotes short-term drilling undertaken for mine planning purposes that intersected new unmodeled mineralized envelopes.

Mineral resources which are not mineral reserves do not have demonstrated economic viability. For additional information about the current mineral reserves of these zones please refer to the Company's Vale do Curaçá Property Technical Report dated January 14, 2021.

Figure 9

Vermelhos Main/East Zone & Siriema, North-South Long Section

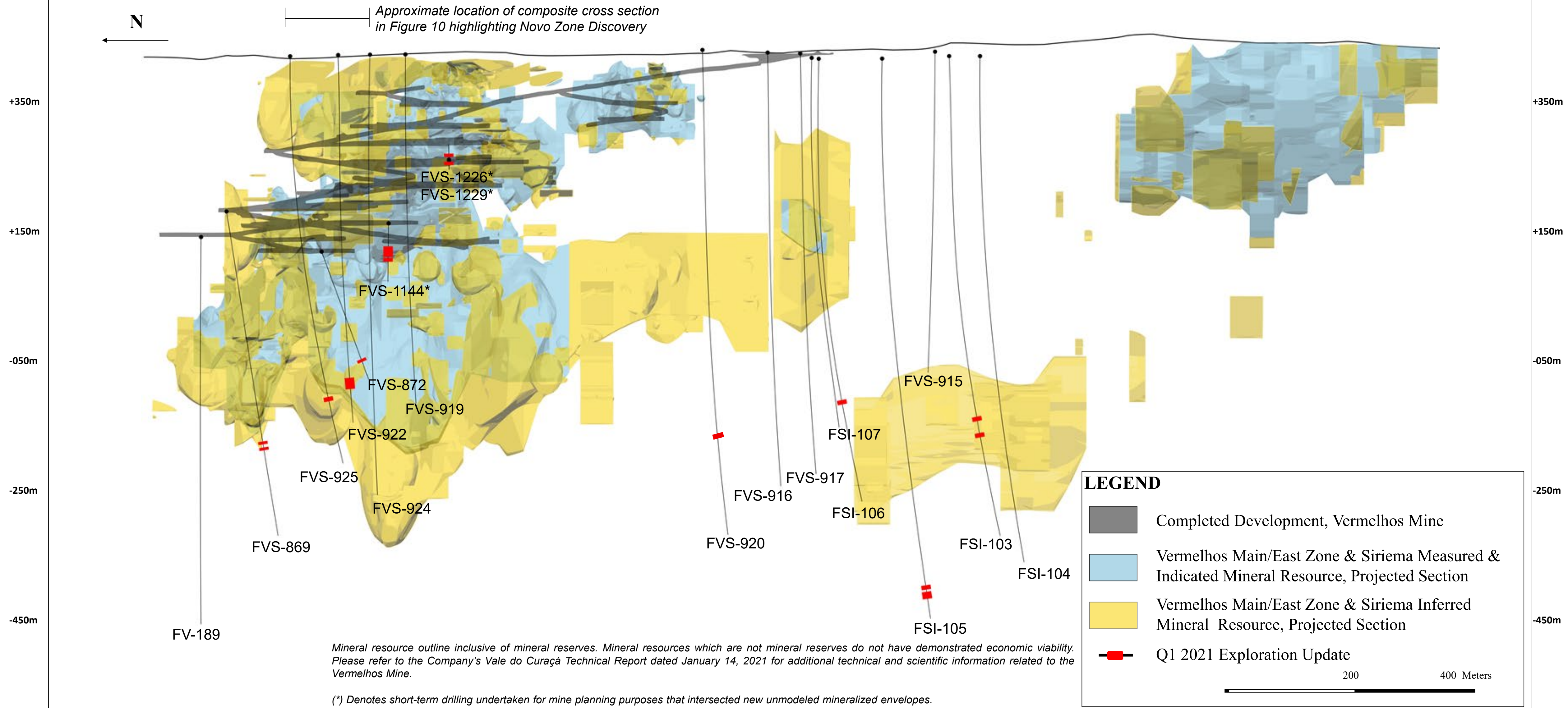


Figure 10

Novo Zone, Vermelhos Mine, East-West Section

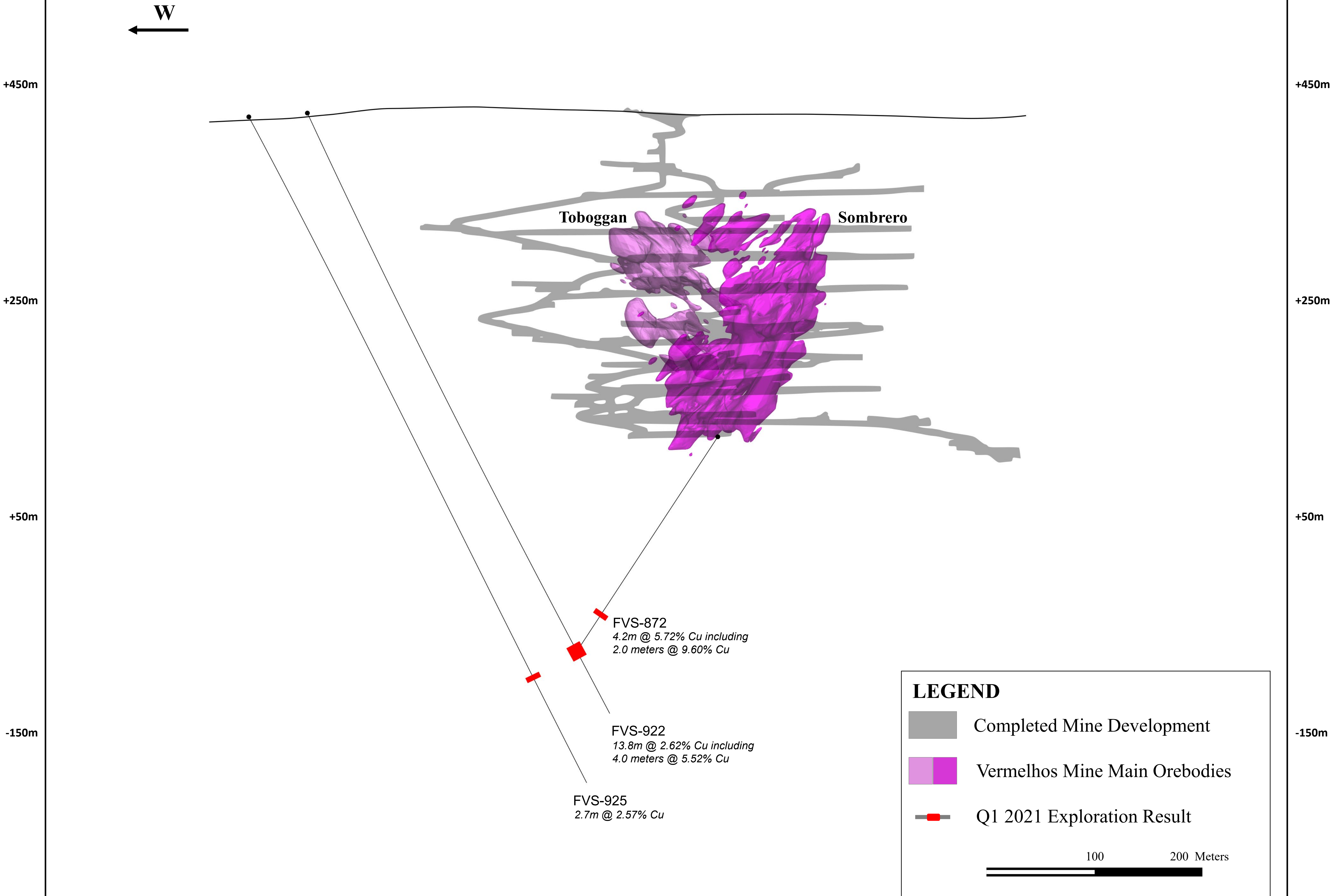
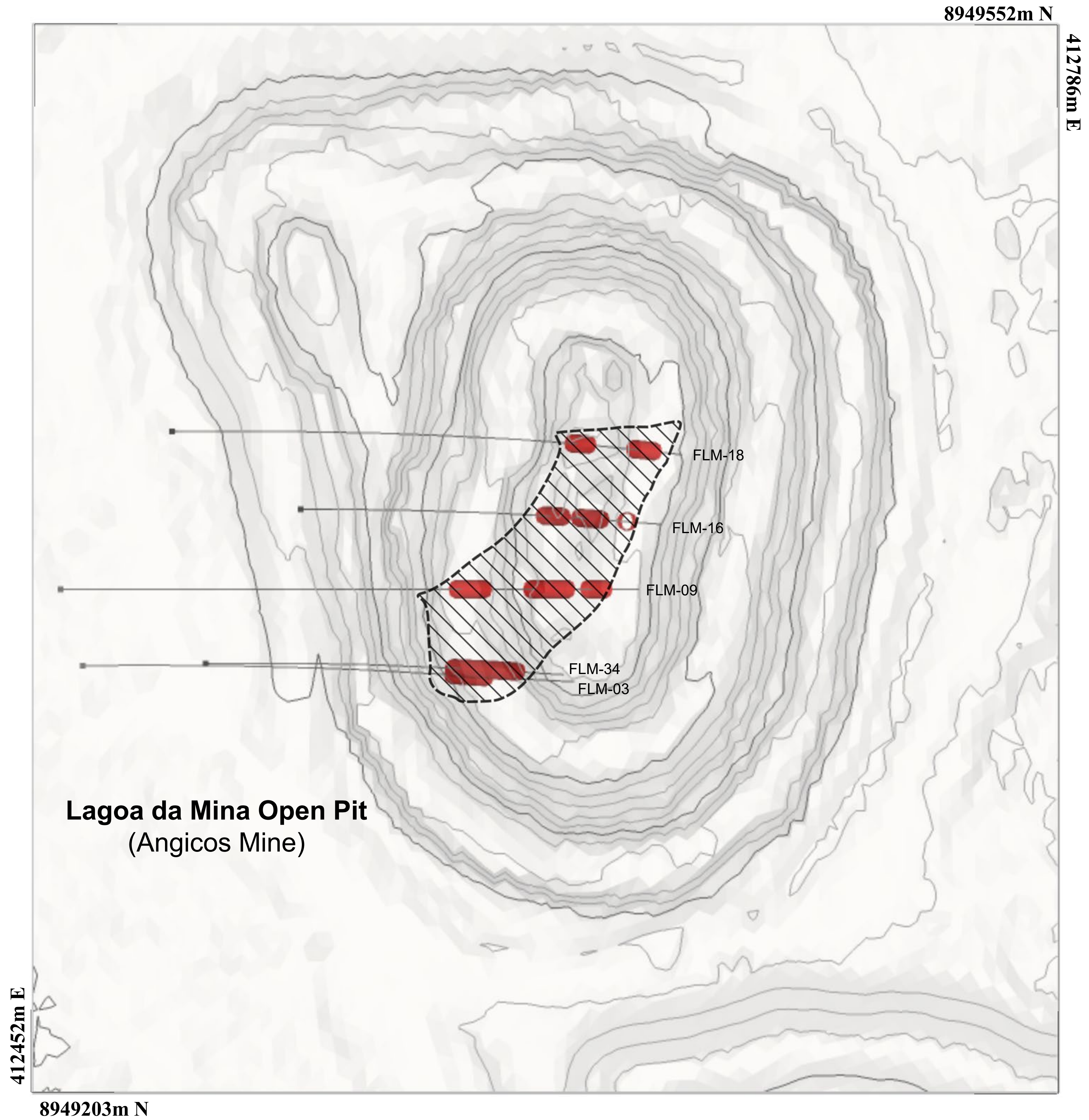
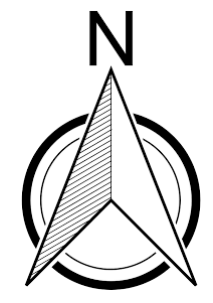


Figure 11
Lagoa da Mina, Surubim District
(Drilling From Surface)



Lagoa da Mina Open Pit
(Angicos Mine)

LEGEND

 Interpreted Mineralized Envelope,
Surface Projection

 Q1 2021 Exploration Results



Notes:

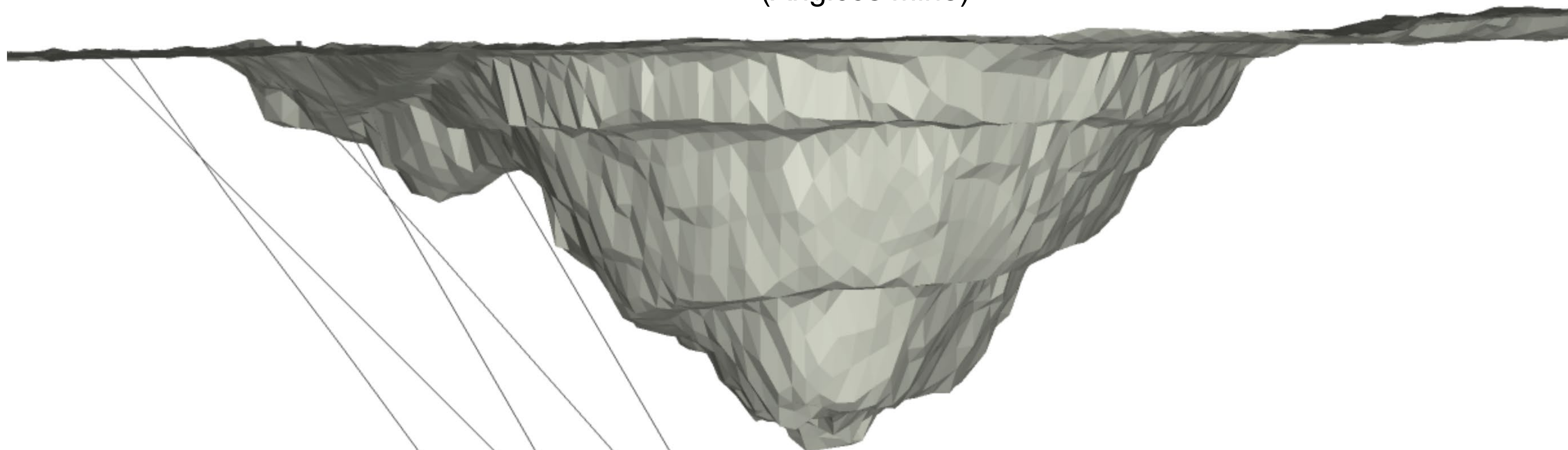
Lagoa da Mina interpreted mineralized projection is based on data compilation work which includes review of geological controls, structural analysis and copper mineralization identified during the Company's technical programs. The interpretation and boundary limits do not imply continuity of mineralization, or actual thickness of mineralization which has yet to be defined.

Figure 12

Lagoa da Mina, Surubim District, West-East Section

W
←

**Lagoa da Mina Open Pit
(Angicos Mine)**



+400m

+400m

+350m

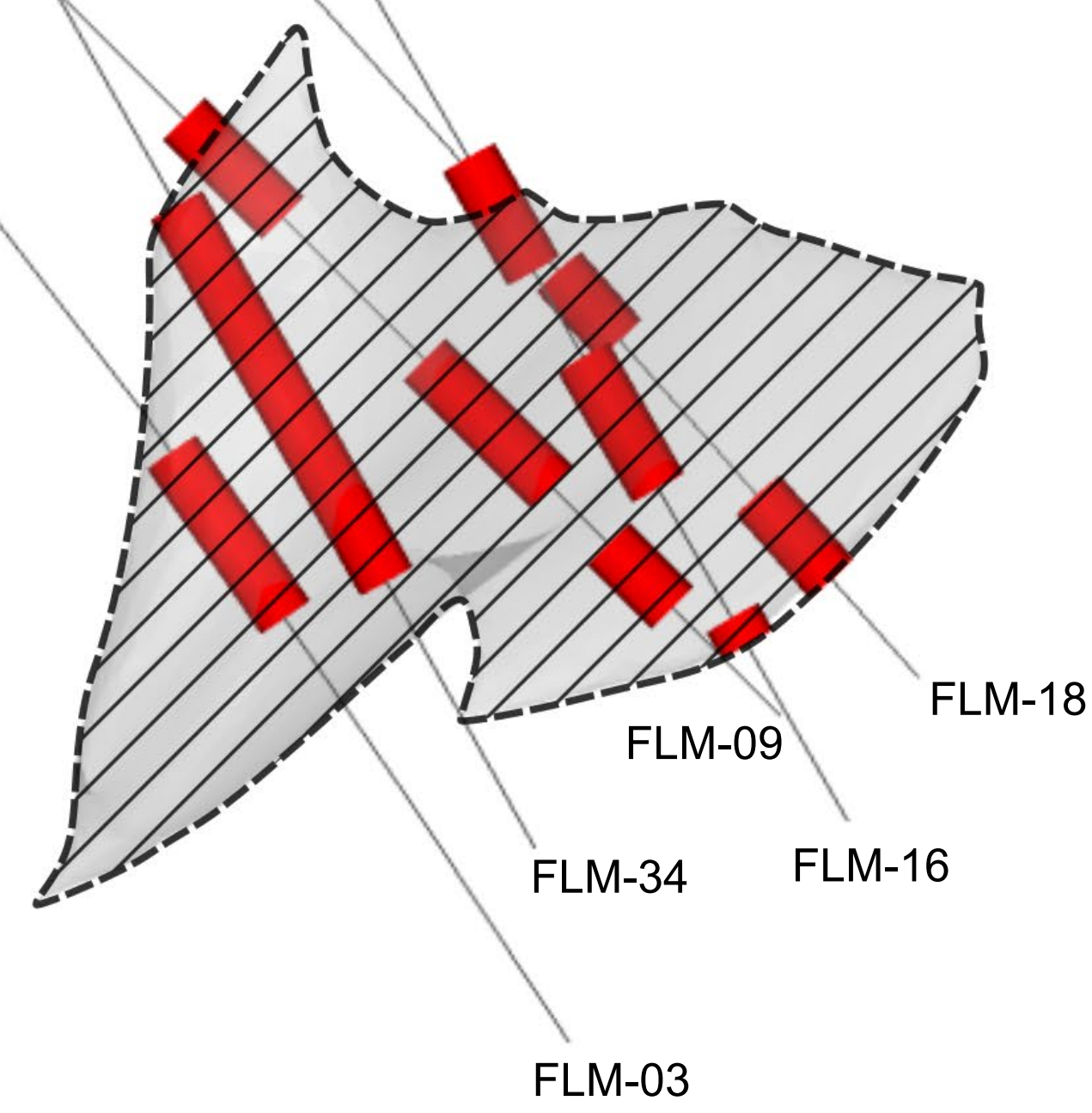
+350m

+300m

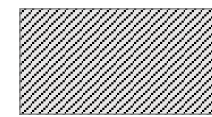

+300m

+250m


+250m



LEGEND

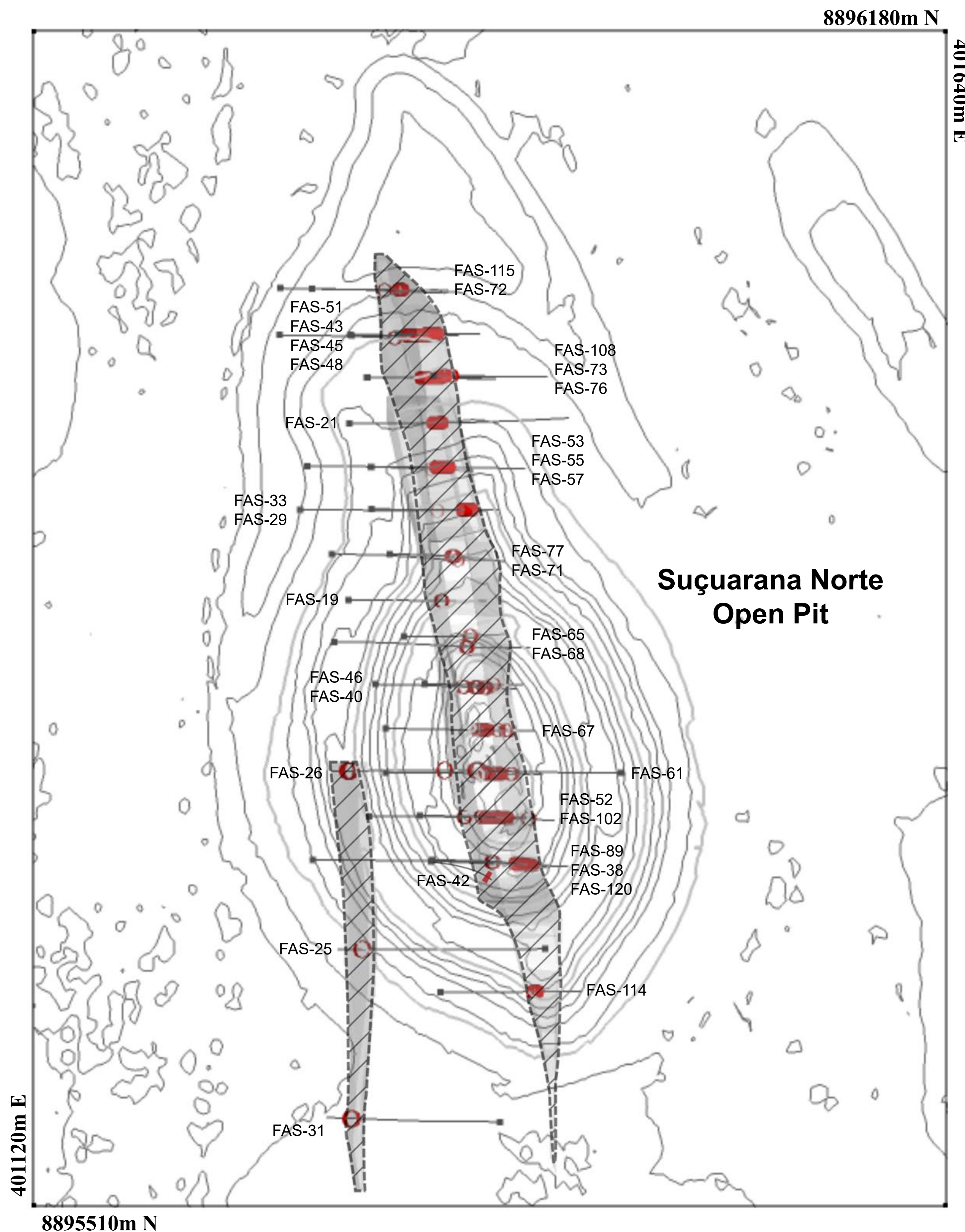
-  Interpreted Mineralized Envelope, Projected in Section
-  Q1 2021 Exploration Result

25 50 Meters



Note:
Lagoa da Mina interpreted mineralized projection is based on data compilation work which includes review of geological controls, structural analysis and copper mineralization identified during the Company's technical programs. The interpretation and boundary limits do not imply continuity of mineralization, or actual thickness of mineralization which has yet to be defined.

Figure 13
Suçuarana Norte, Pilar District
(Drilling From Surface)



LEGEND

Interpreted Mineralized Envelope,
Surface Projection

Q1 2021 Exploration Results



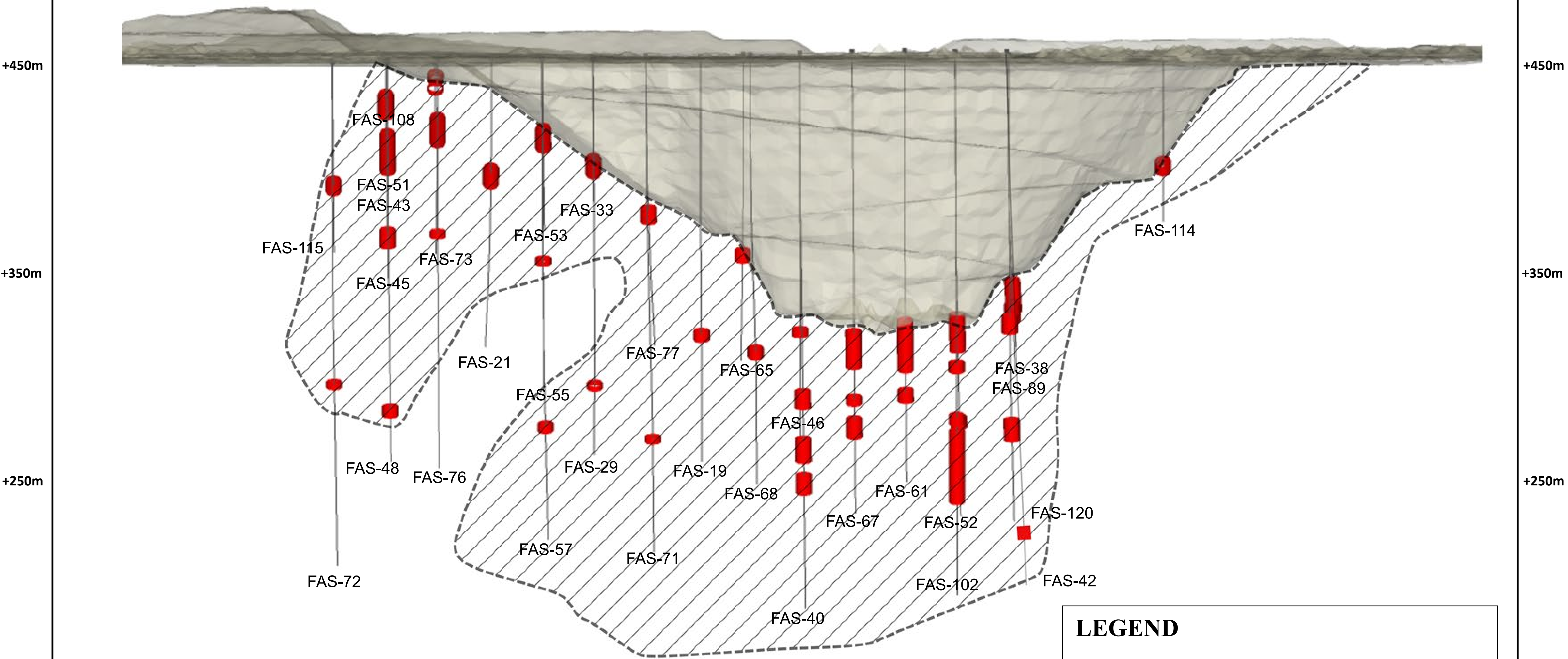
Note: Suçuarana Norte interpreted mineralized projection is based on data compilation work which includes review of geological controls, structural analysis and copper mineralization identified during the Company's technical programs. The interpretation and boundary limits do not imply continuity of mineralization, or actual thickness of mineralization which has yet to be defined.

Figure 14

Suçarana Norte, Pilar District, North-South Long Section



Suçarana Norte Open Pit



LEGEND

- Interpreted Mineralized Envelope, Projected in Section
- Q1 2021 Exploration Result

50 100 Meters

Note: Suçarana Norte interpreted mineralized projection is based on data compilation work which includes review of geological controls, structural analysis and copper mineralization identified during the Company's technical programs. The interpretation and boundary limits do not imply continuity of mineralization, or actual thickness of mineralization which has yet to be defined.