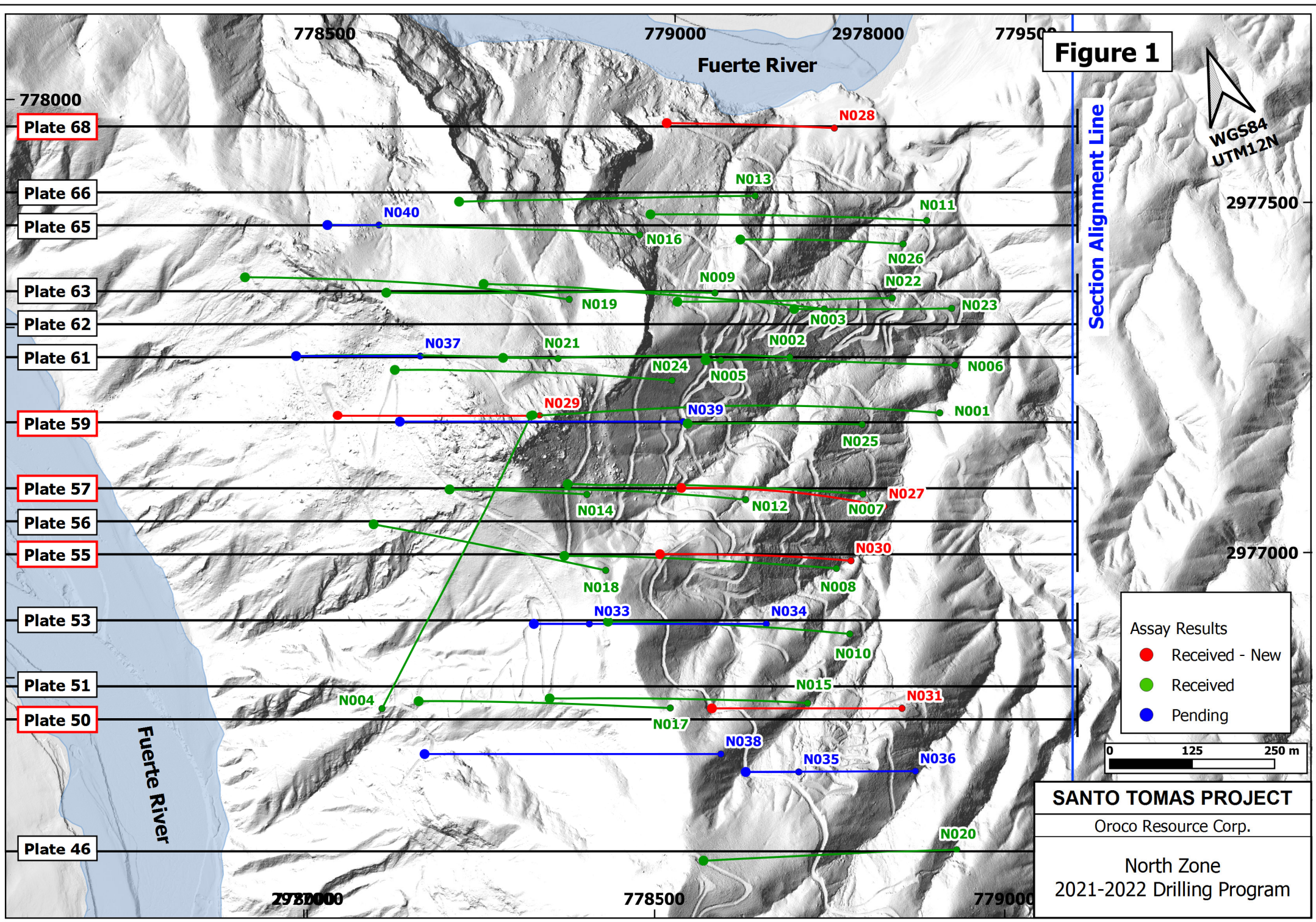


**Table 1: Significant Assay Intervals in the Santo Tomas 2021-2022 Program, Holes N027 to N031 and B006 to B007:**

<b>Drill Hole No.</b>	<b>Dip</b>	<b>From (m)</b>	<b>To (m)</b>	<b>Length (m)</b>	<b>Cu %</b>	<b>Mo %</b>	<b>Au g/t</b>	<b>Ag g/t*</b>	<b>CuEQ %</b>
<b>N027</b>	<b>-55</b>	<b>17.0</b>	<b>212.2</b>	<b>195.2</b>	<b>0.41</b>	<b>0.003</b>	<b>0.049</b>	<b>3.56</b>	<b>0.45</b>
"	-55	214.2	332.0	117.8	0.22	0.005	0.014	1.70	0.25
<b>N028</b>	<b>-55</b>	<b>55.0</b>	<b>187.0</b>	<b>132.0</b>	<b>0.40</b>	<b>0.007</b>	<b>0.032</b>	<b>3.09</b>	<b>0.46</b>
"	-55	231.0	267.0	36.0	0.20	0.004	0.010	2.22	0.22
<b>N029</b>	<b>-65</b>	<b>249.0</b>	<b>355.1</b>	<b>106.1</b>	<b>0.31</b>	<b>0.010</b>	<b>0.018</b>	<b>2.31</b>	<b>0.36</b>
"	-65	365.3	378.8	13.5	0.25	0.006	0.011	1.74	0.28
"	-65	408.1	420.0	11.9	0.12	0.016	0.016	1.09	0.19
<b>N030</b>	<b>-55</b>	<b>52.5</b>	<b>264.0</b>	<b>211.6</b>	<b>0.41</b>	<b>0.003</b>	<b>0.065</b>	<b>2.42</b>	<b>0.47</b>
"	-55	269.2	287.0	17.8	0.22	0.010	0.072	1.62	0.31
"	<b>-55</b>	<b>317.0</b>	<b>450.0</b>	<b>133.0</b>	<b>0.17</b>	<b>0.003</b>	<b>0.010</b>	<b>1.43</b>	<b>0.19</b>
<b>N031</b>	<b>-55</b>	<b>125.0</b>	<b>284.6</b>	<b>159.6</b>	<b>0.32</b>	<b>0.008</b>	<b>0.032</b>	<b>1.80</b>	<b>0.37</b>
"	-55	292.0	326.4	34.4	0.26	0.004	0.009	1.43	0.28
<b>B006</b>	<b>-55</b>	<b>409.0</b>	<b>426.9</b>	<b>17.9</b>	<b>0.31</b>	<b>0.001</b>	<b>0.040</b>	<b>3.69</b>	<b>0.35</b>
"	-55	478.0	490.0	12.0	0.15	0.001	0.024	2.37	0.17
<b>B007</b>	<b>-55</b>	<b>488.0</b>	<b>716.0</b>	<b>228.0</b>	<b>0.31</b>	<b>0.007</b>	<b>0.051</b>	<b>2.36</b>	<b>0.37</b>

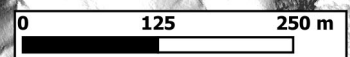
**Cu Equivalent (CuEq) % = Cu % + (Mo %\*3.75) + (Au ppm\*0.752).** The commodity prices (3-year Average) used are in \$US: Cu \$3.20 /lb, Mo \$12.00 /lb, and Au \$1,650.00 /troy oz. \* Ag values are not used in the CuEq calculations.

Figure 1



Assay Results

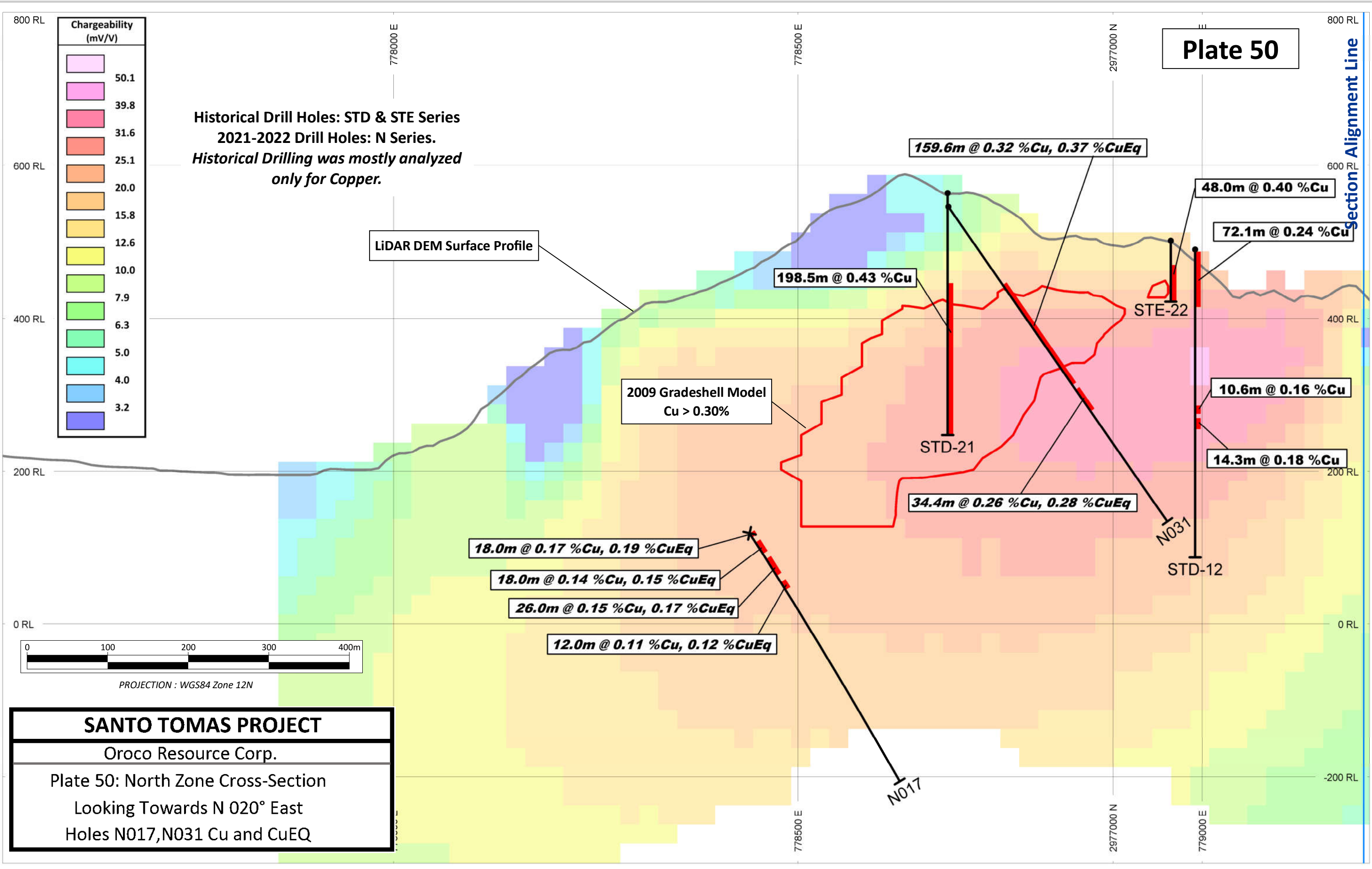
- Received - New
- Received
- Pending



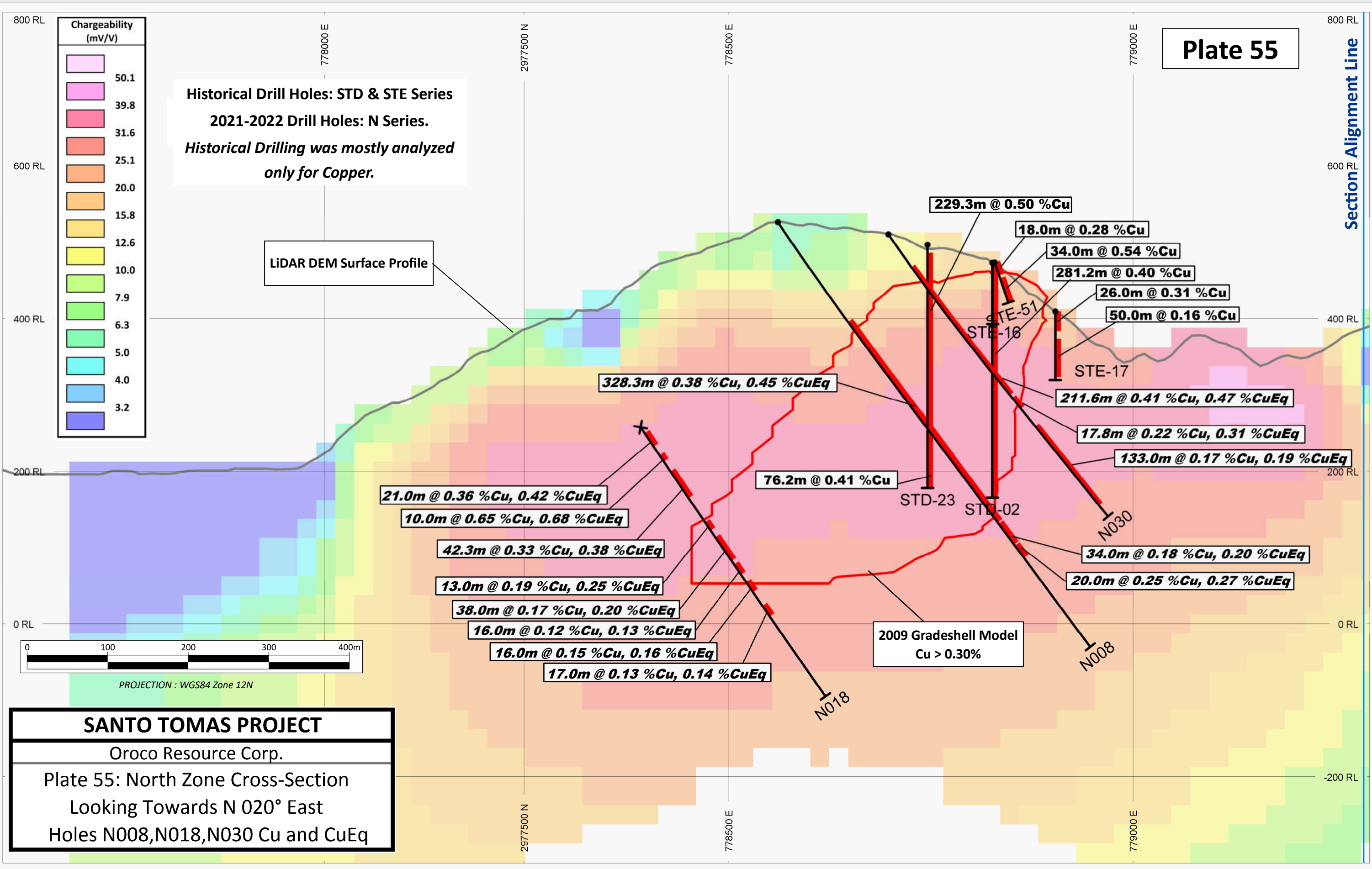
**SANTO TOMAS PROJECT**  
 Oroco Resource Corp.  
 North Zone  
 2021-2022 Drilling Program

# Plate 50

Section Alignment Line



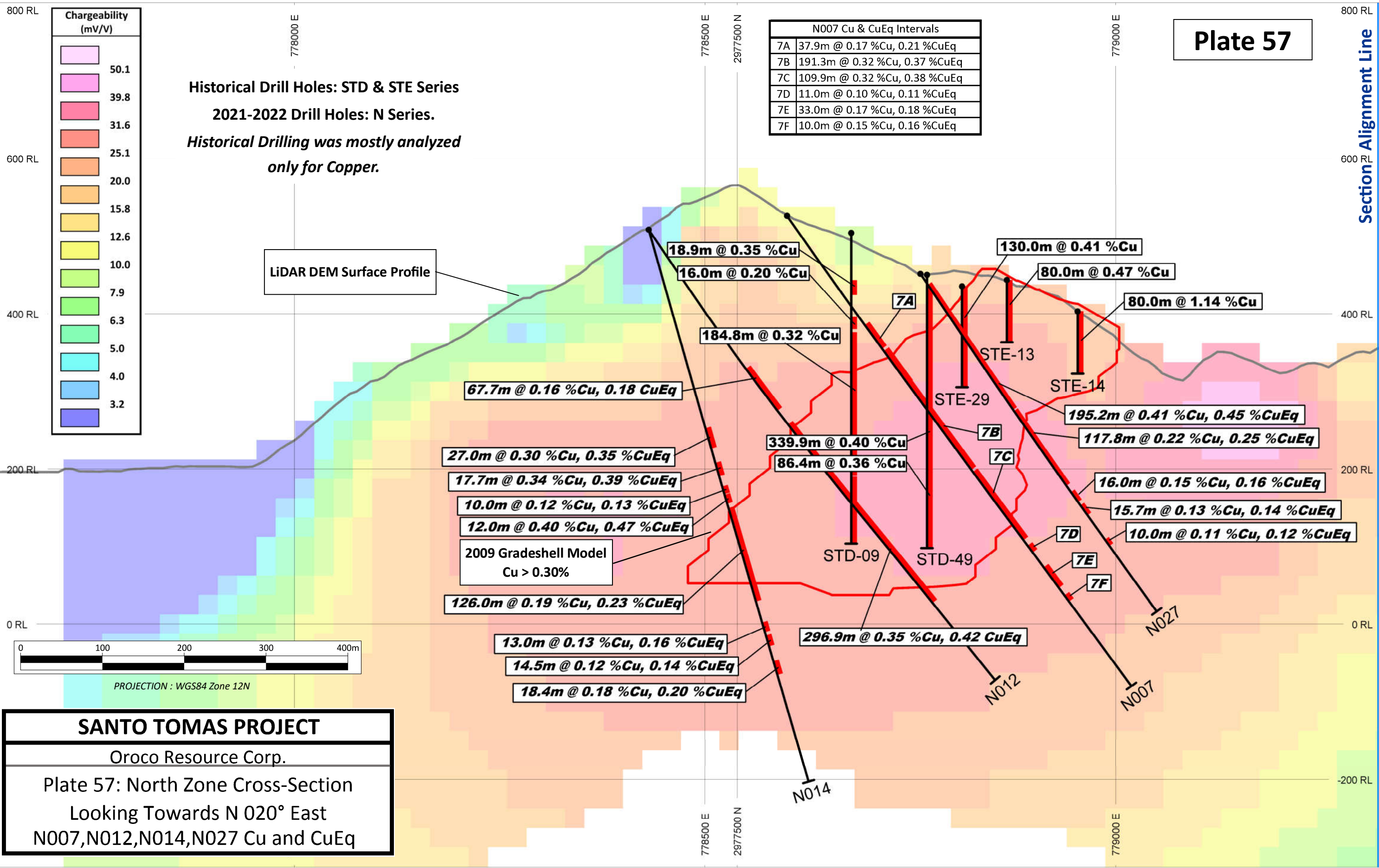
**SANTO TOMAS PROJECT**  
 Oroco Resource Corp.  
 Plate 50: North Zone Cross-Section  
 Looking Towards N 020° East  
 Holes N017, N031 Cu and CuEQ



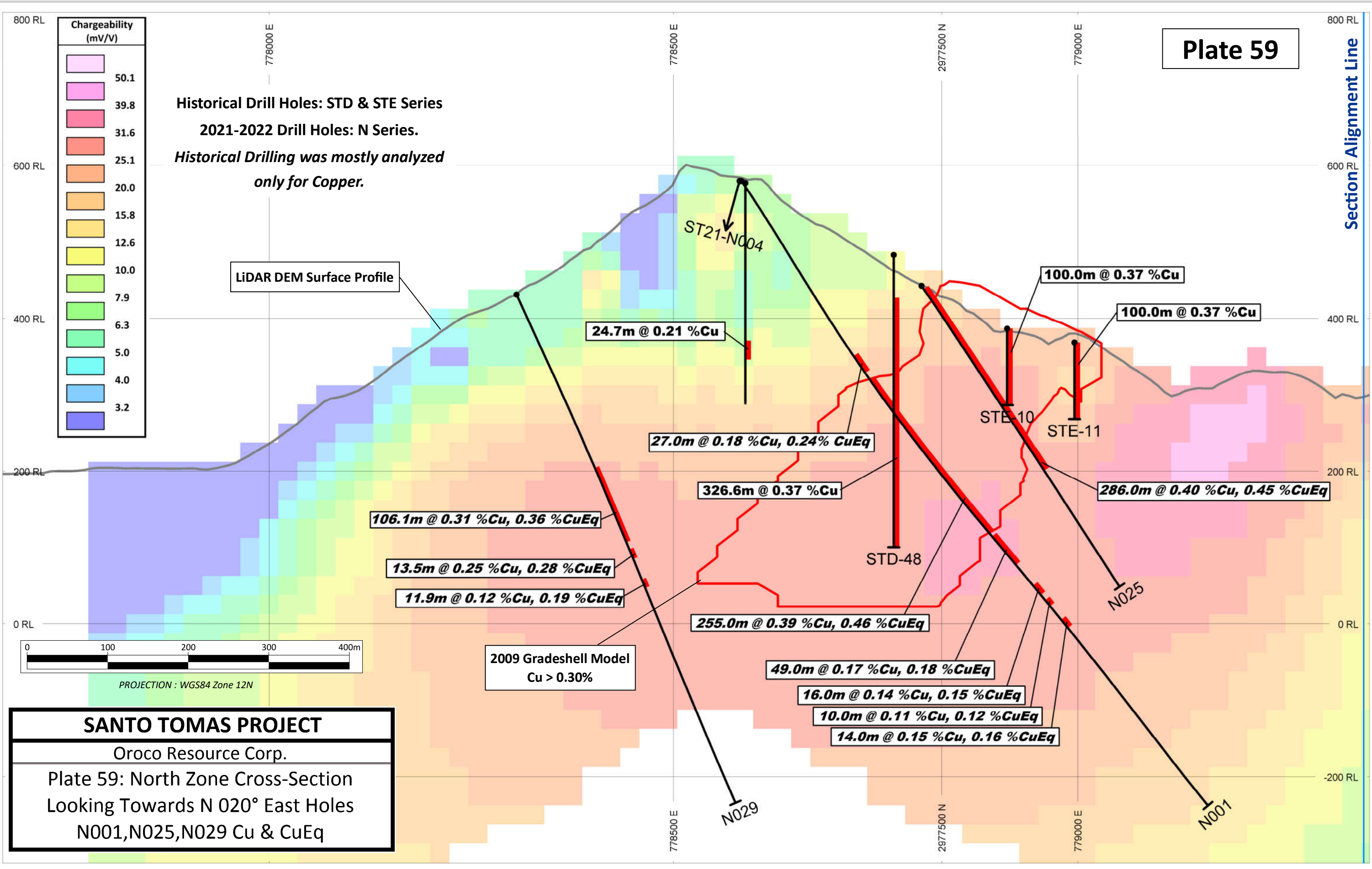
**SANTO TOMAS PROJECT**  
 Oroco Resource Corp.  
 Plate 55: North Zone Cross-Section  
 Looking Towards N 020° East  
 Holes N008, N018, N030 Cu and CuEq

# Plate 57

Section Alignment Line



**SANTO TOMAS PROJECT**  
 Oroco Resource Corp.  
 Plate 57: North Zone Cross-Section  
 Looking Towards N 020° East  
 N007, N012, N014, N027 Cu and CuEq



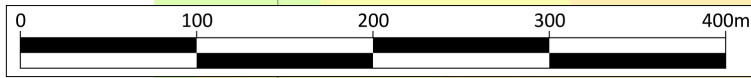
**SANTO TOMAS PROJECT**  
 Oroco Resource Corp.  
 Plate 59: North Zone Cross-Section  
 Looking Towards N 020° East Holes  
 N001,N025,N029 Cu & CuEq

Historical Drill Holes: STD & STE Series  
2021-2022 Drill Holes: N Series.  
Historical Drilling was mostly analyzed  
only for Copper.



LiDAR DEM Surface Profile

2009 Gradeshell Model  
Cu > 0.30%



PROJECTION : WGS84 Zone 12N

**SANTO TOMAS PROJECT**  
Oroco Resource Corp.  
Plate 68: North Zone Cross-Section  
Looking Towards N 020° East  
Hole N028 Cu and CuEq

Section Alignment Line

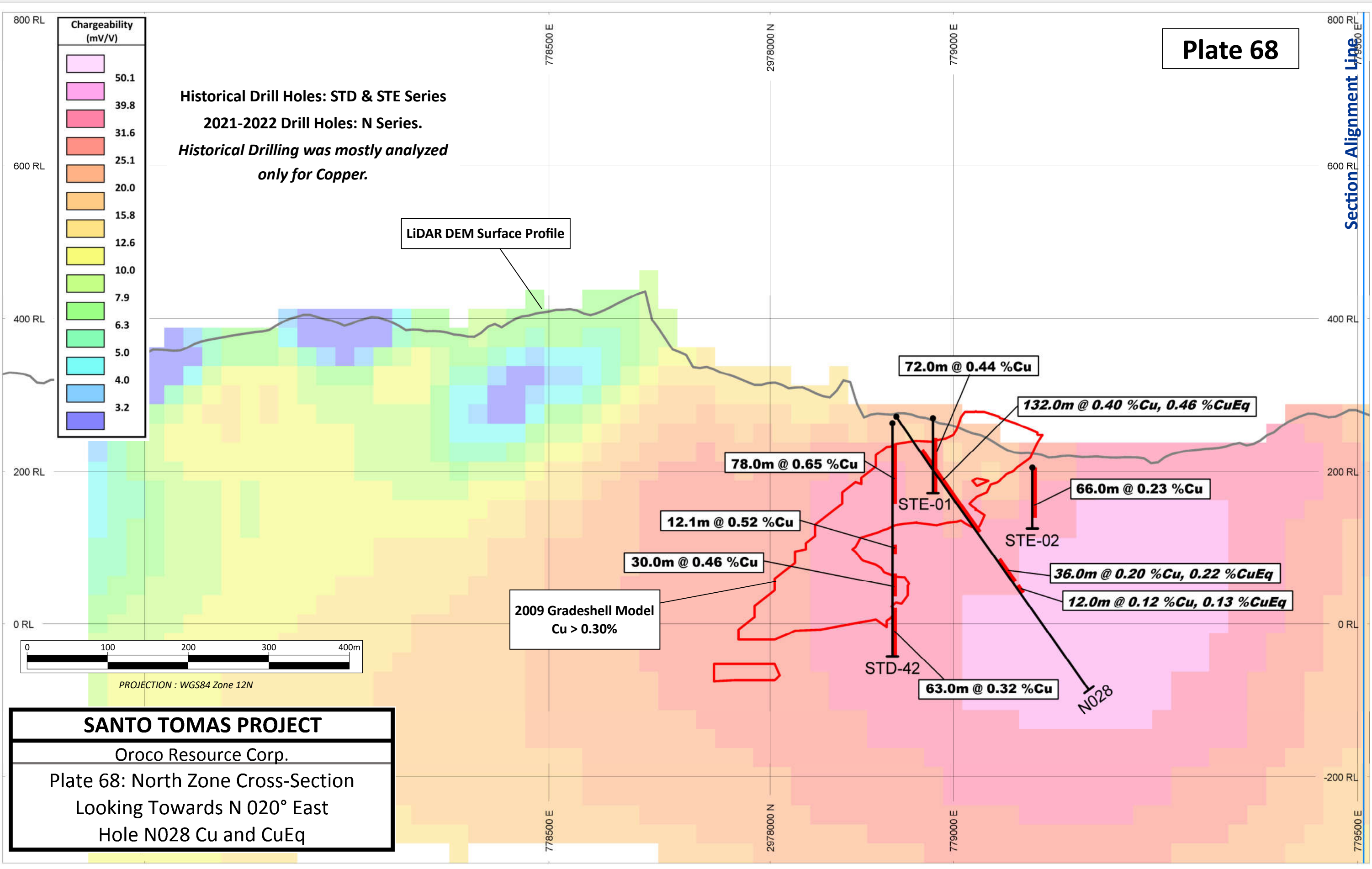
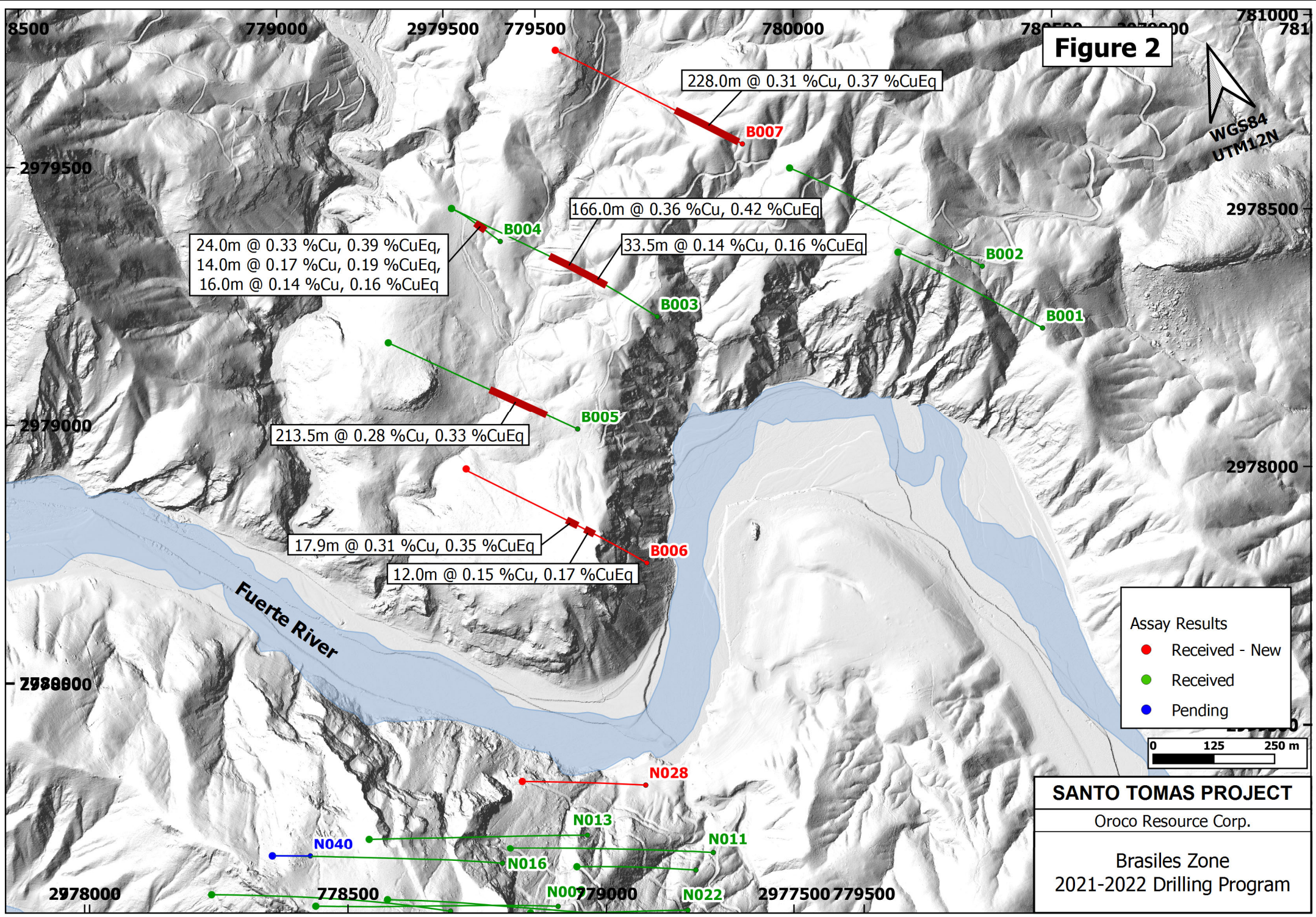


Figure 2



Assay Results

- Received - New
- Received
- Pending

0 125 250 m

**SANTO TOMAS PROJECT**  
Oroco Resource Corp.  
Brasiles Zone  
2021-2022 Drilling Program