

Specifications and Notes

Survey Line Specifications:
 Total Project Line Kilometers: 394 km
 Line Spacing: 50 m
 Tie Spacing: 500 m
 Line Azimuth: N 00° E
 Tie Azimuth: N 90° E

Geodetic Specifications
 Map Projection: UTM
 Datum: NAD83 (CSRS)
 Zone: 18 North
 Central Meridian: 75° West
 False Easting: 500 000
 False Northing: 0

Helicopter Specifications

Helicopter: AS350 BA+ (C-GOVD)
 Average Speed: 40 m/s
 Average Flying Height: 35 m

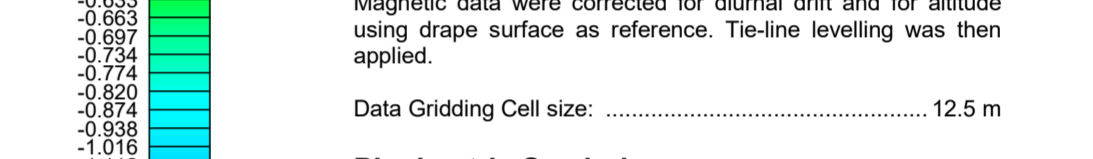
Magnetometer Specification
 Magnetometer: Geometrics Cesium
 Magnetometer Installation: Stinger
 Sample Rate: 10 Hz
 Base Station Magnetometer: GEM GSM-19 Overhauser

Ancillary Equipment

Data Acquisition System: RMS DAAR500
 Laser Altimeter: Renishaw ILM-1200R
 GPS Receiver: Novatel DL-V3
 GPS Differential Correction: SBAS
 GPS Sample Rate: 1 Hz

Flight Path

GPS data recorded during flight were corrected using Canadian Spatial Reference System: "Precise Point Positioning" method.

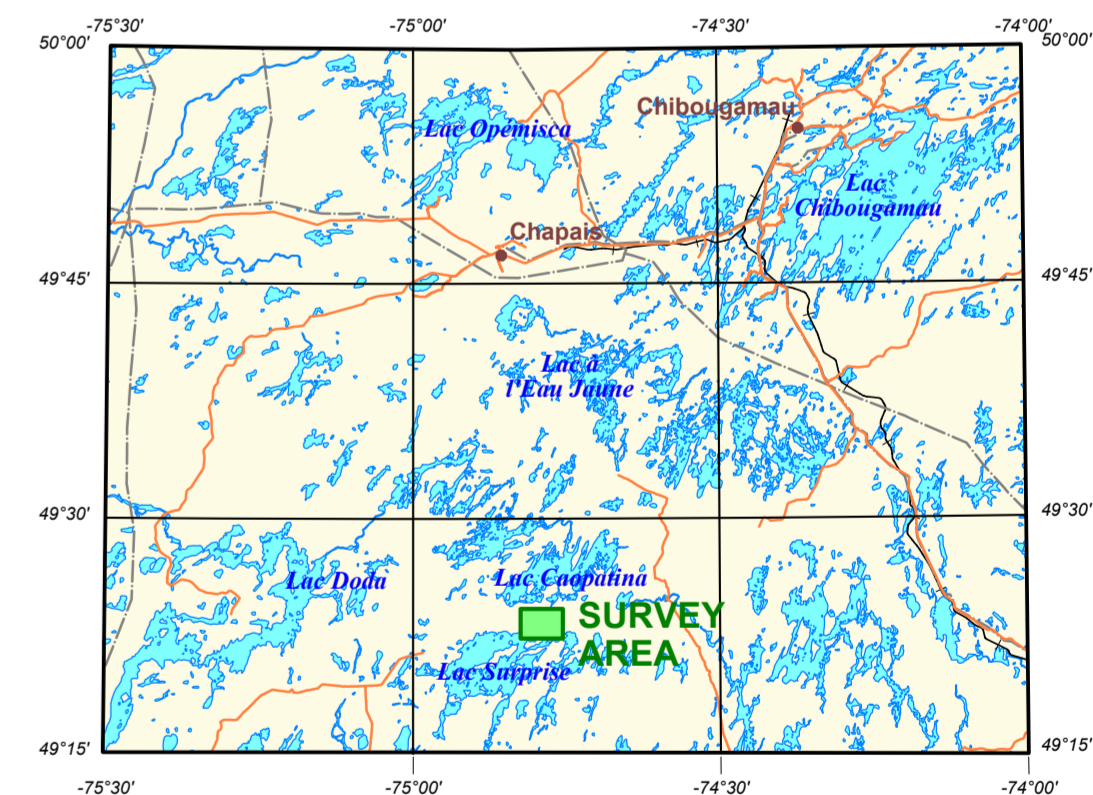


Planimetric Symbols

Topographic Contours: [Symbol]
 Drainage: [Symbol]
 Survey Boundary: [Symbol]
 Claim boundary: [Symbol]
 Road: [Symbol]

Data Gridding Cell size: 12.5 m

Topographic and hydrographic information from Geobase Carvec 1:50K.



IAMGOLD CORPORATION		
Client:	Helicopter-Borne Magnetic Survey	
Type:	Nelligan, QC	
Project:	32G/07	
Area:	Shadow: Inc. 45°, Dec. N0°E	
Title:	First Vertical Derivative of Magnetic Field	
Scale:	 1 : 10 000	



Project # : P19004	Date: Feb. 18, 2019	Ref # : VD1IAM-CHA10K
Data processing: C. Cortada	Map verification: F. Caty, I. D'Amours, P. Eng.	Approved: I. D'Amours, P. Eng.