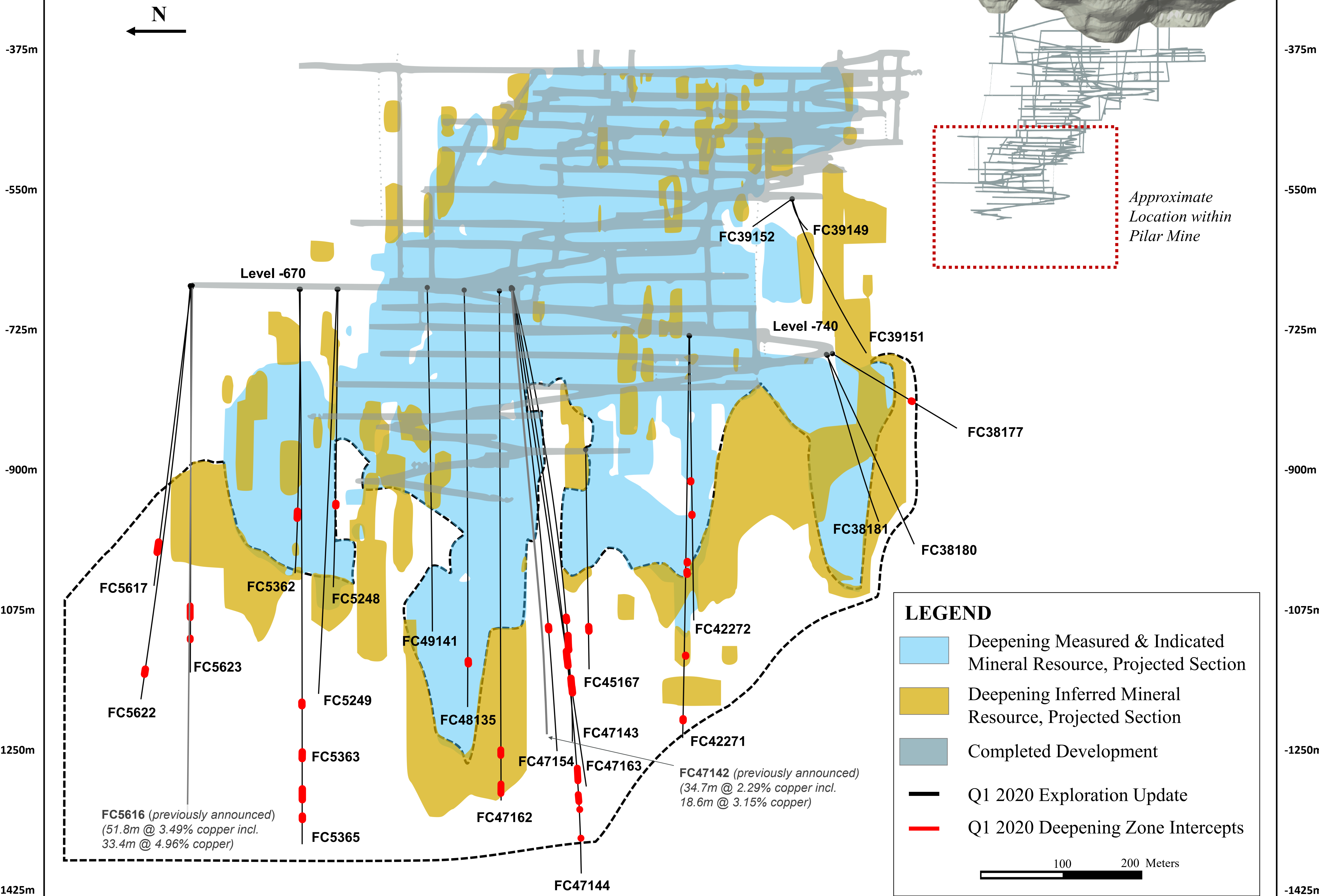


Figure 1

Deepening Extension, North-South Long Section



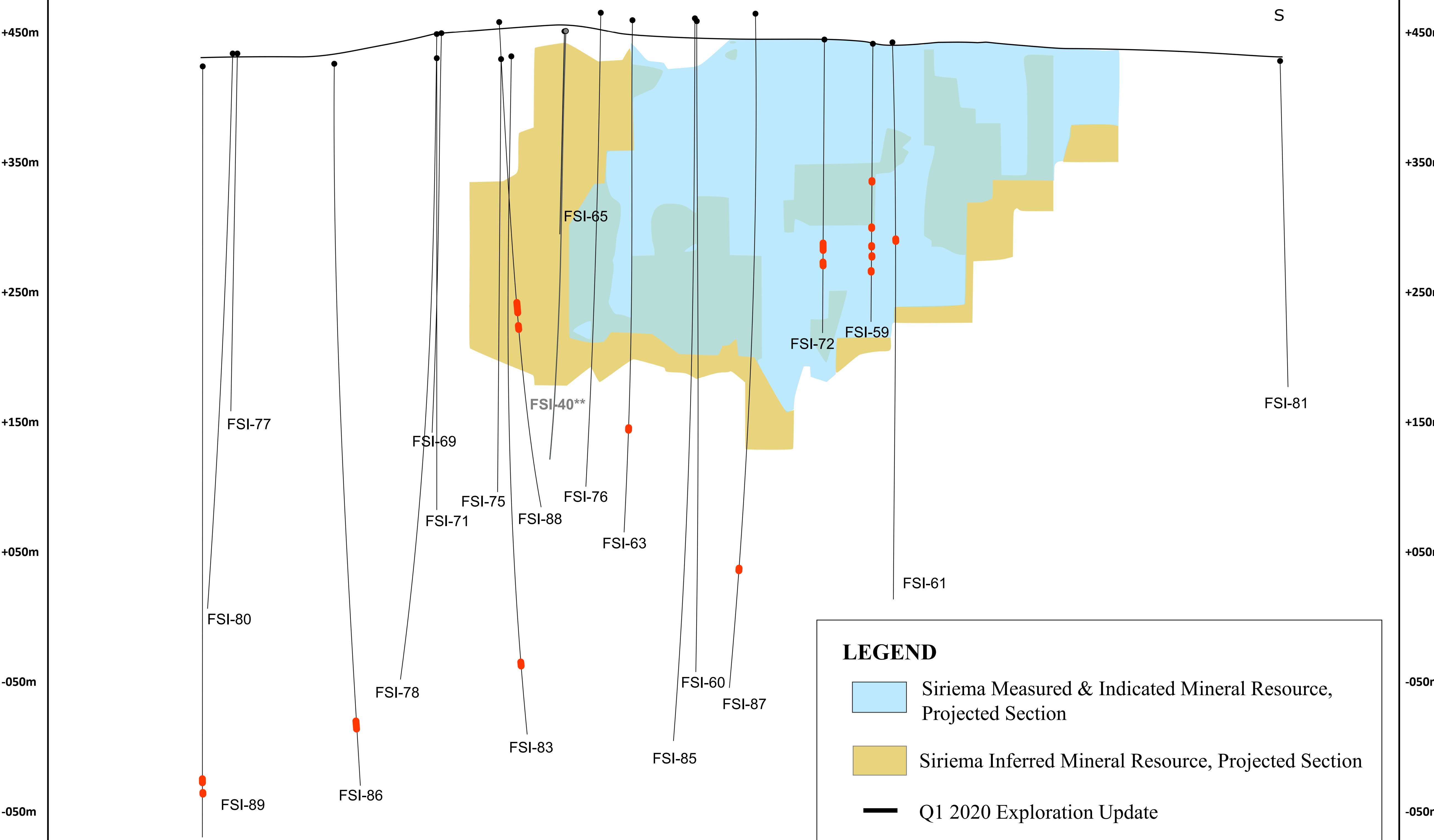
LEGEND

- Deepening Measured & Indicated Mineral Resource, Projected Section
- Deepening Inferred Mineral Resource, Projected Section
- Completed Development
- Q1 2020 Exploration Update
- Q1 2020 Deepening Zone Intercepts

100 200 Meters

Mineral resource outline inclusive of mineral reserves. Mineral resources which are not mineral reserves do not have demonstrated economic viability. Please refer to the Company's Vale do Curaçá Property Technical Report dated November 25, 2019 for additional technical and scientific information related to the Pilar Mine. Previously announced drilling as further detailed in the Company's press release dated September 12, 2019 and December 3, 2019.

Figure 3 Siriema, North-South Long Section



LEGEND

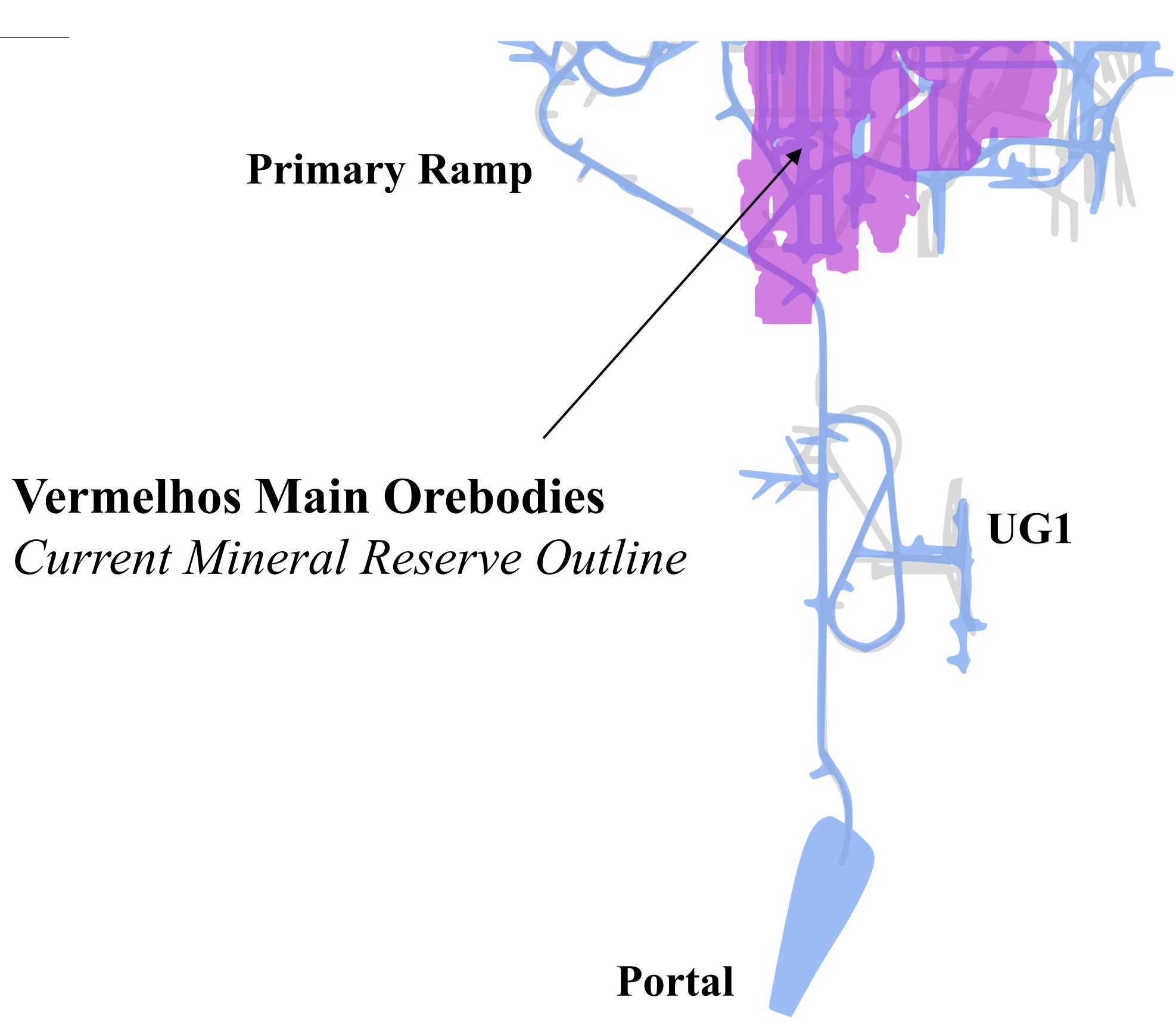
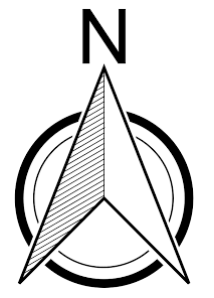
- Siriema Measured & Indicated Mineral Resource, Projected Section
- Siriema Inferred Mineral Resource, Projected Section
- Q1 2020 Exploration Update
- Q1 2020 Siriema Intercepts

100 200 Meters

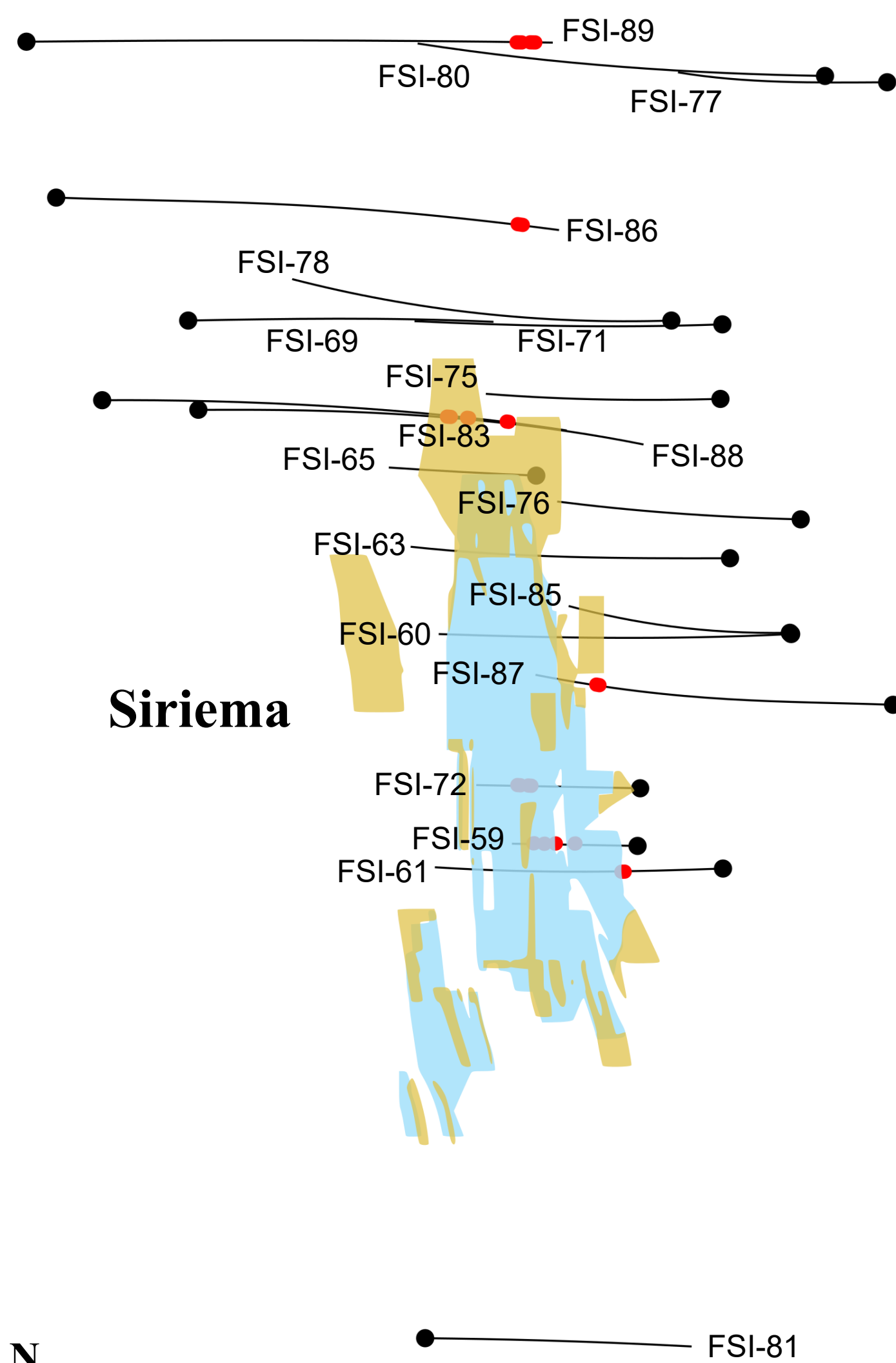
****FSI-40 (previously announced)**
 (9.1 meters @ 2.66% copper, 1.74% nickel, 0.07% cobalt and 1.46 grams per tonne 3PGE+Au incl.
 5.6 meters @ 3.37% copper, 2.59% nickel, 0.10% cobalt and 2.08 grams per tonne 3PGE+Au)

Mineral resource outline inclusive of mineral reserves. Mineral resources which are not mineral reserves do not have demonstrated economic viability. 3PGE+Au indicates sum of palladium, platinum, rhodium and gold assays in grams per tonne ("gpt"). Please refer to the Company's press release dated December 3, 2019 for additional information on previously announced results. Please refer to the Company's Vale do Curaçá Property Technical Report dated November 25, 2019 for additional technical and scientific information related to Siriema.

Figure 4
Siriema, Plan View



Vermelhos Main Orebodies
Current Mineral Reserve Outline



Siriema

LEGEND

- Surface Projection of Current Mineral Reserve, Vermelhos Mine
- Surface Projection of Siriema Measured & Indicated Mineral Resource
- Surface Projection of Siriema Inferred Mineral Resource
- Q1 2020 Exploration Update
- Q1 2020 Siriema Intercepts

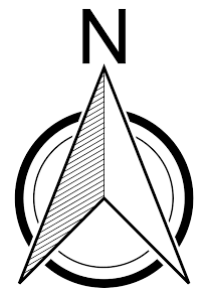


Note

Mineral resource outline shown inclusive of mineral reserves. Mineral resources which are not mineral reserves do not have demonstrated economic viability. For additional scientific information related to the Vermelhos Mine and Siriema, please refer to the Company's Vale do Curaçá Property Technical Report dated November 25, 2019.

395900m E
8969090m N

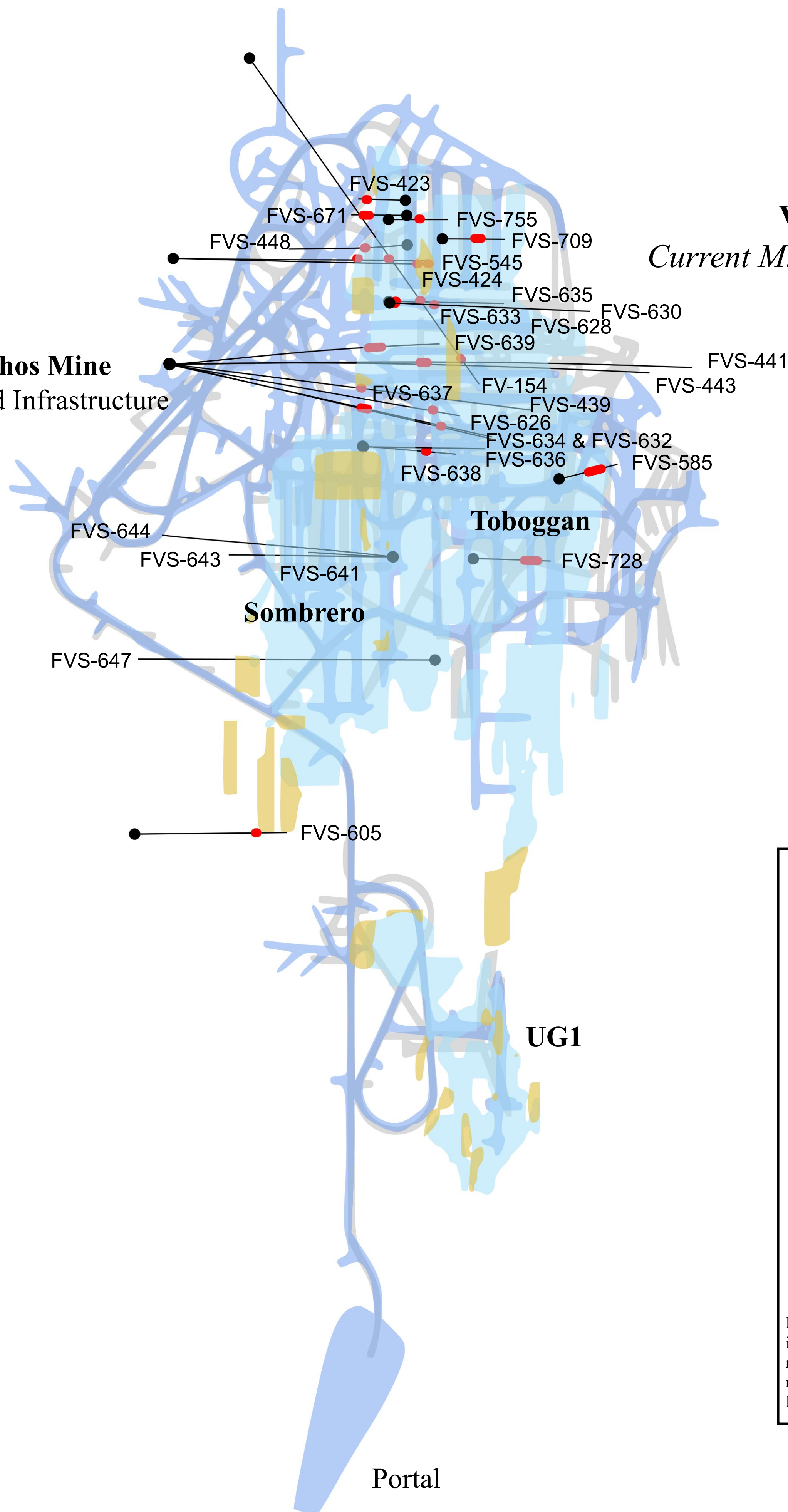
Figure 5
Vermelhos Mine Drilling, Plan View




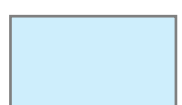
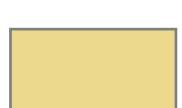


8971160m N
396865m E

Vermelhos Mine
Current Mineral Resource Projection

Vermelhos Mine
Underground Infrastructure



LEGEND

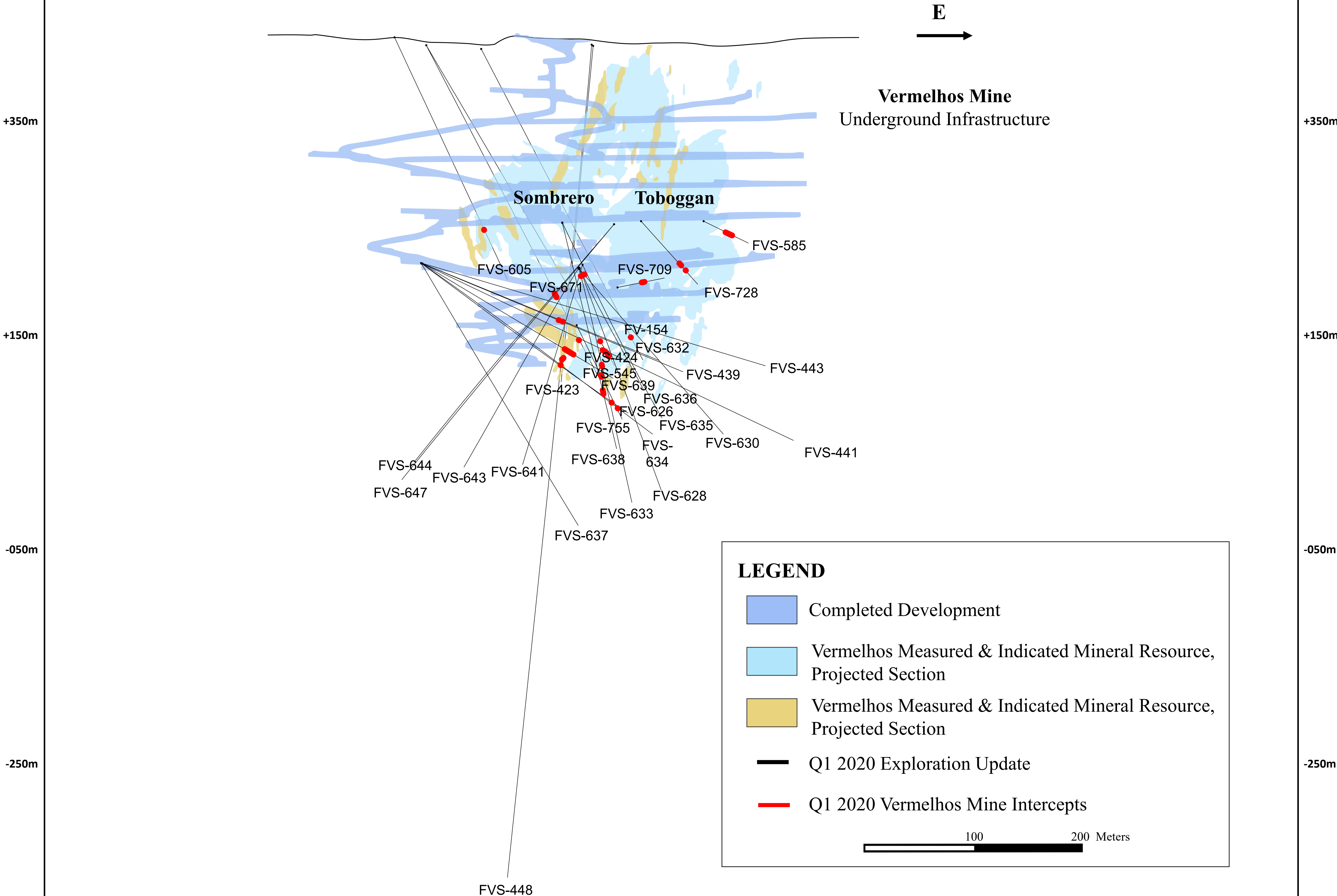
-  Completed Development
-  Vermelhos Measured and Indicated Mineral Resource, Surface Projection
-  Vermelhos Inferred Mineral Resource, Surface Projection
-  Q1 2020 Exploration Update
-  Vermelhos Mine Cu Intercepts

100 200 Meters

Note: Surface projection of mineral resources of the Vermelhos Mine are shown inclusive of mineral reserves. Mineral resources which are not mineral reserves do not have demonstrated economic viability. For additional scientific information related to the Vermelhos Mine, please refer to the Company's Vale do Curaçá Property Technical Report dated November 25, 2019.

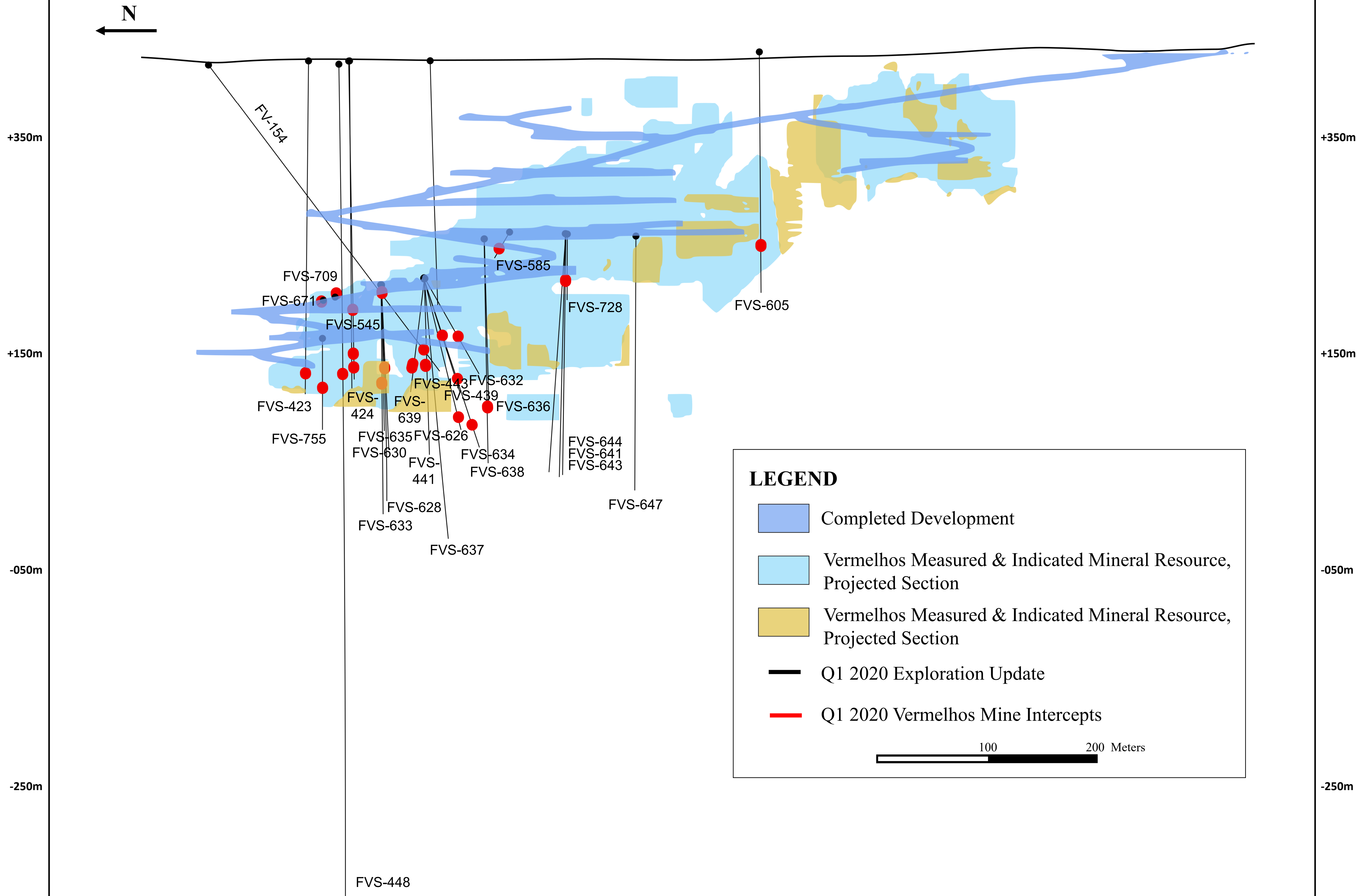
396225m E
8970080m N

Figure 6
Vermelhos Mine, East-West Section (Looking North)



Mineral resource outline inclusive of mineral reserves. Mineral resources which are not mineral reserves do not have demonstrated economic viability. Please refer to the Company's Vale do Curaçá Property Technical Report dated November 25, 2019 for additional technical and scientific information related to the Vermelhos Mine.

Figure 7 Vermelhos Mine, North-South Long Section



Mineral resource outline inclusive of mineral reserves. Mineral resources which are not mineral reserves do not have demonstrated economic viability. Please refer to the Company's Vale do Curaçá Property Technical Report dated November 25, 2019 for additional technical and scientific information related to the Vermelhos Mine..

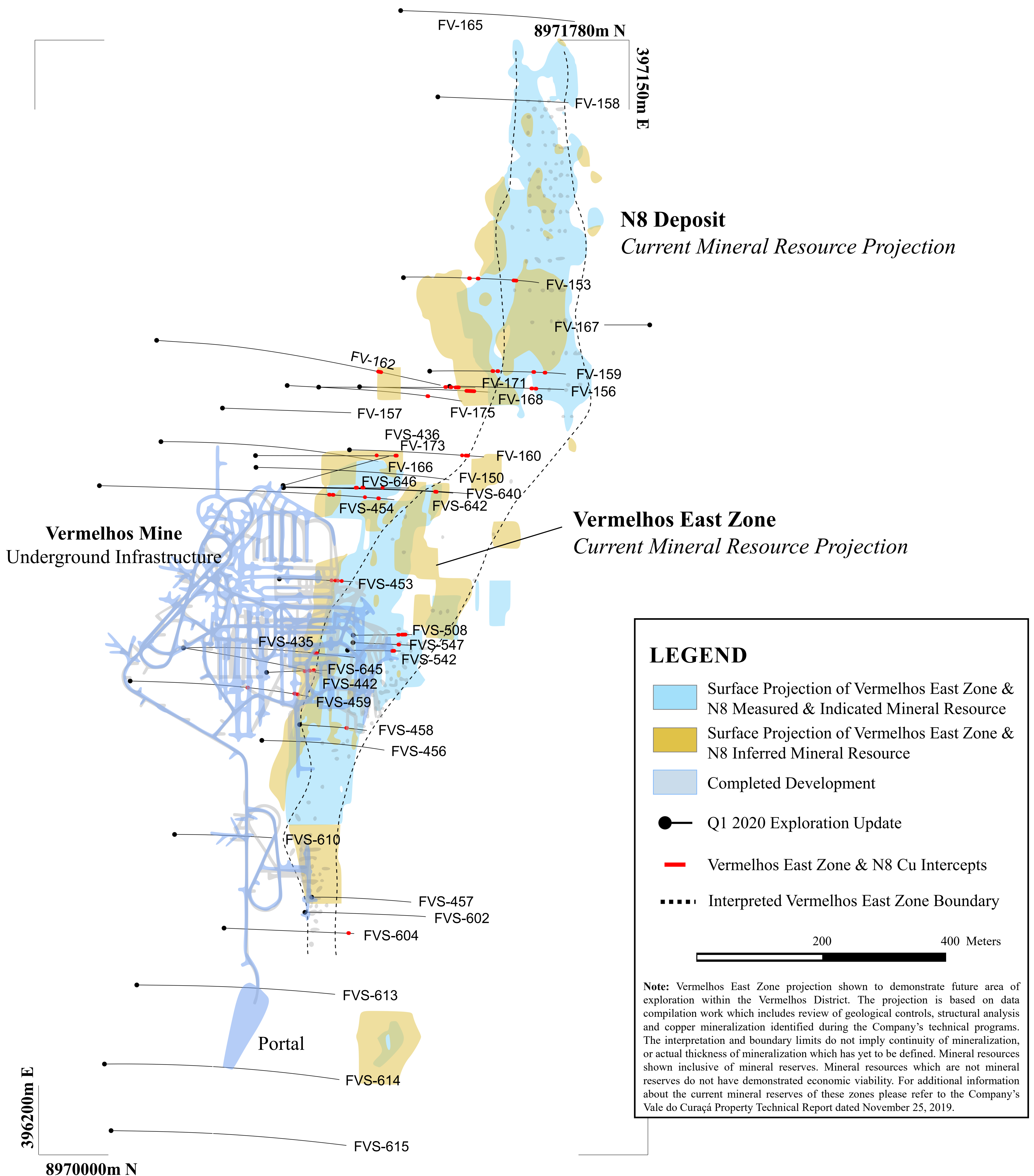
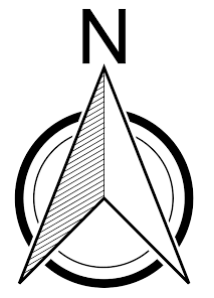
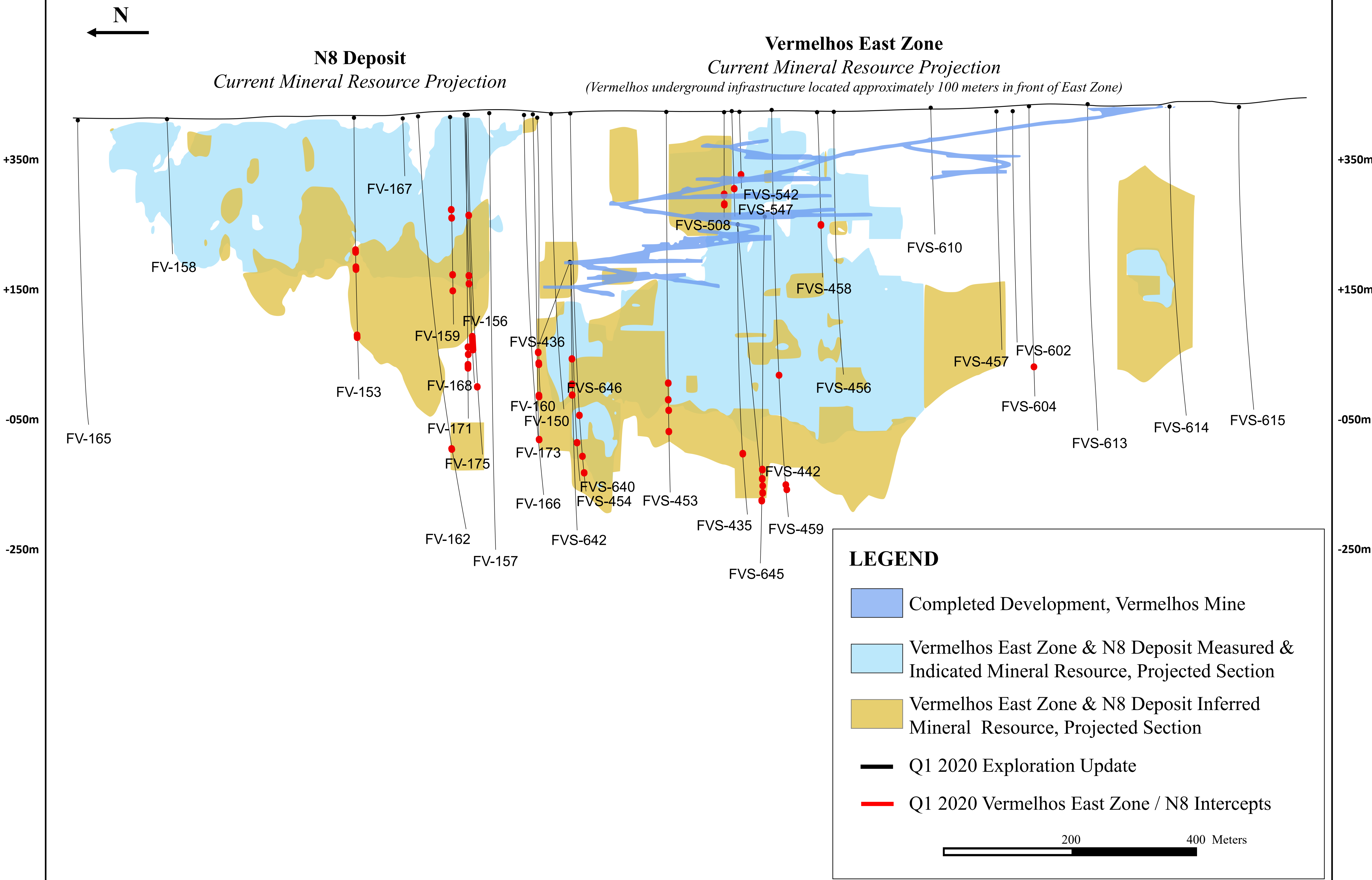


Figure 9

Vermelhos East Zone & N8 Deposit, North-South Long Section



Mineral resource outline inclusive of mineral reserves. Mineral resources which are not mineral reserves do not have demonstrated economic viability. Please refer to the Company's Vale do Curaçá Property Technical Report dated November 25, 2019 for additional technical and scientific information related to the Vermelhos Mine.

Figure 10
NX Gold Mine, Plan View

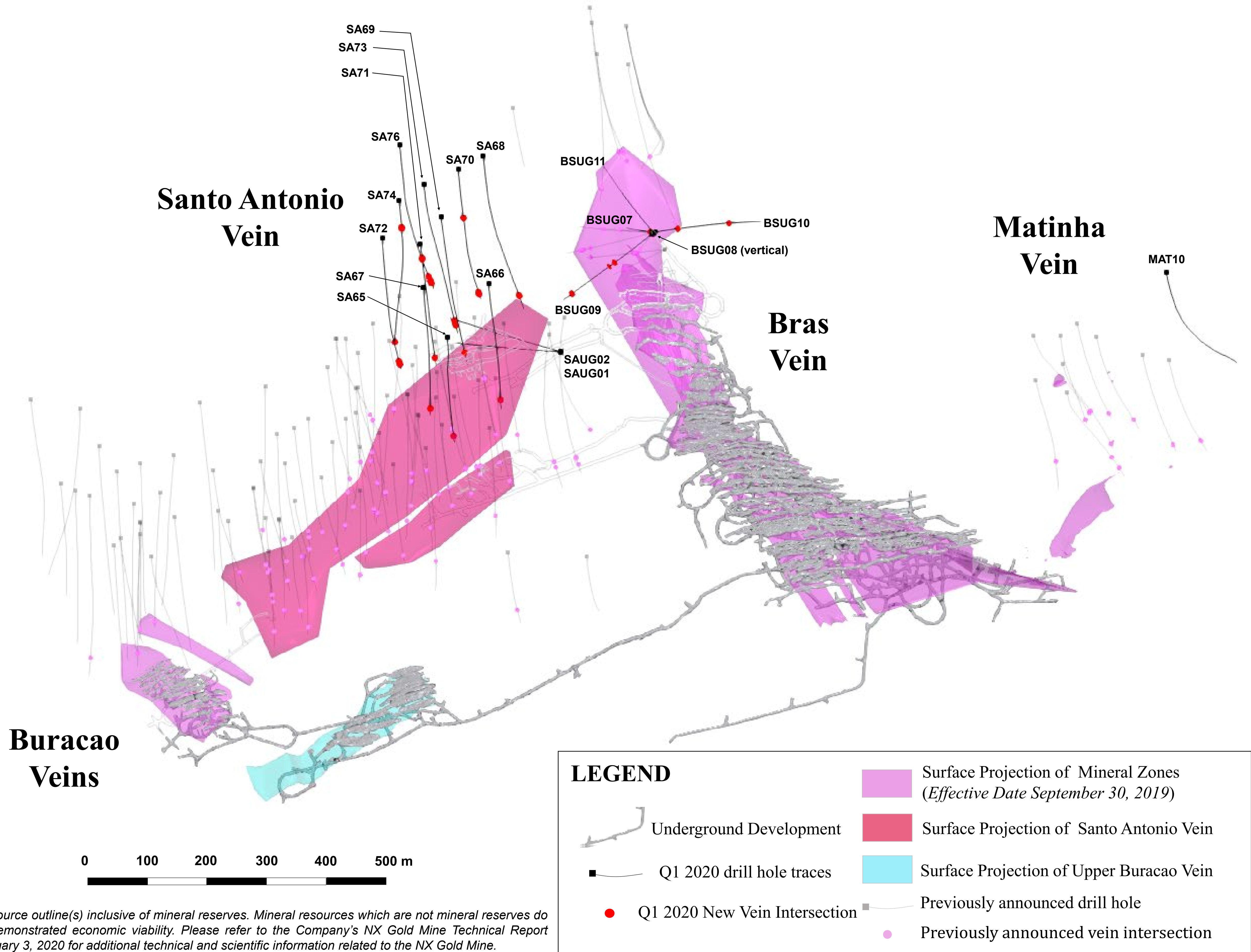
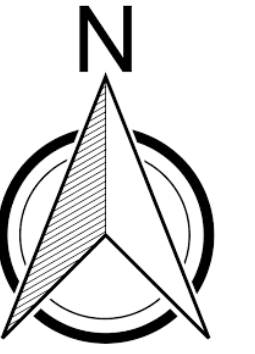
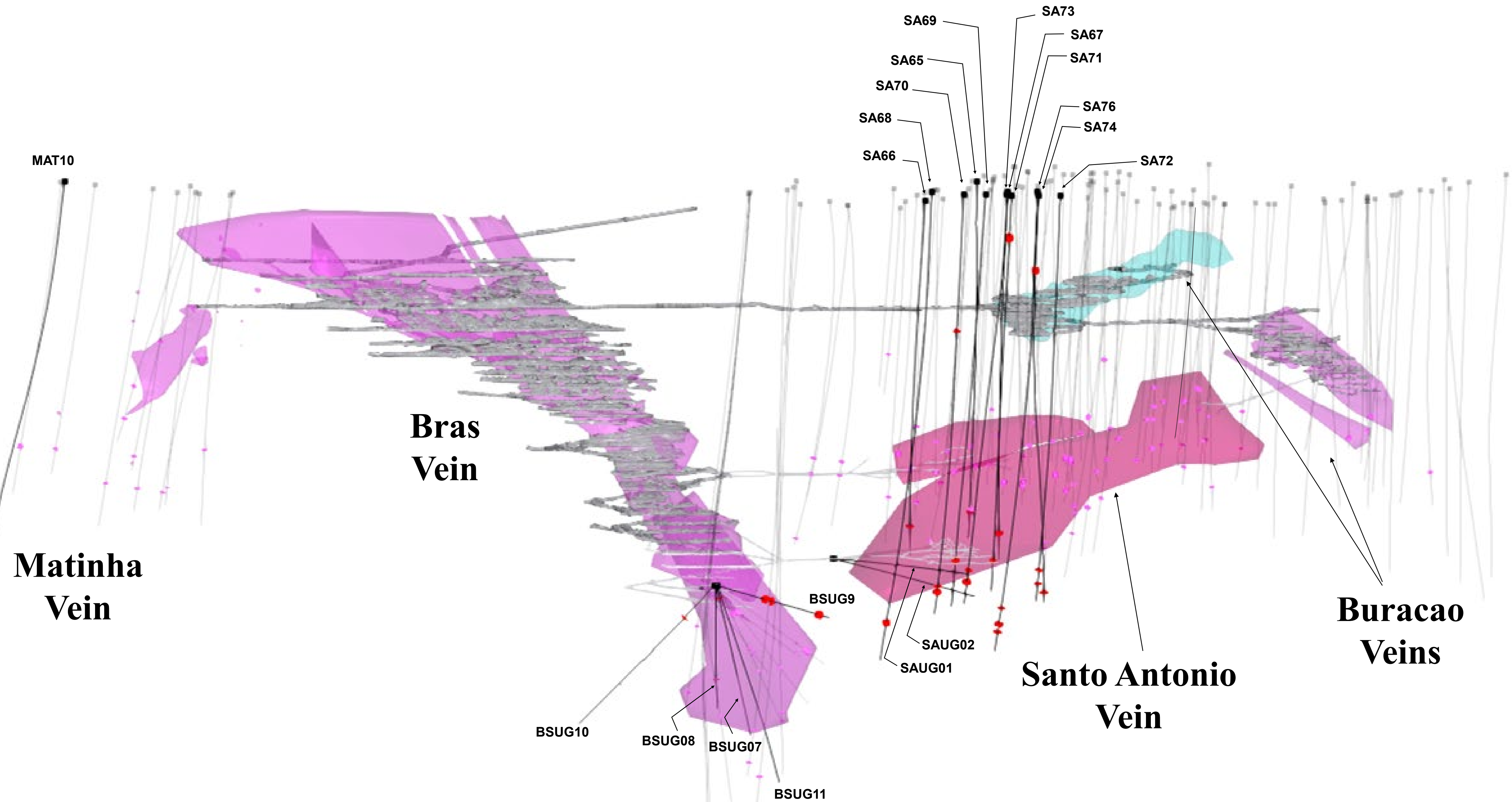


Figure 11
NX Gold Mine, East-West Long Section



LEGEND

	Vertical Projection of Mineral Zones (Effective Date September 30, 2019)
	Underground Development
	Q1 2020 New Vein Intersection
	Previously announced vein intersection
	Vertical Projection of Upper Buracao Vein
	Q1 2020 drill hole traces
	Previously announced drill hole

Mineral resource outline(s) inclusive of mineral reserves. Mineral resources which are not mineral reserves do not have demonstrated economic viability. Please refer to the Company's NX Gold Mine Technical Report dated February 3, 2020 for additional technical and scientific information related to the NX Gold Mine.