

Black Pine Oxide Gold Project Drill Results

3D drill assays are displayed to preferentially show higher grade assays above lower grade in order to highlight the distribution of high grade gold.

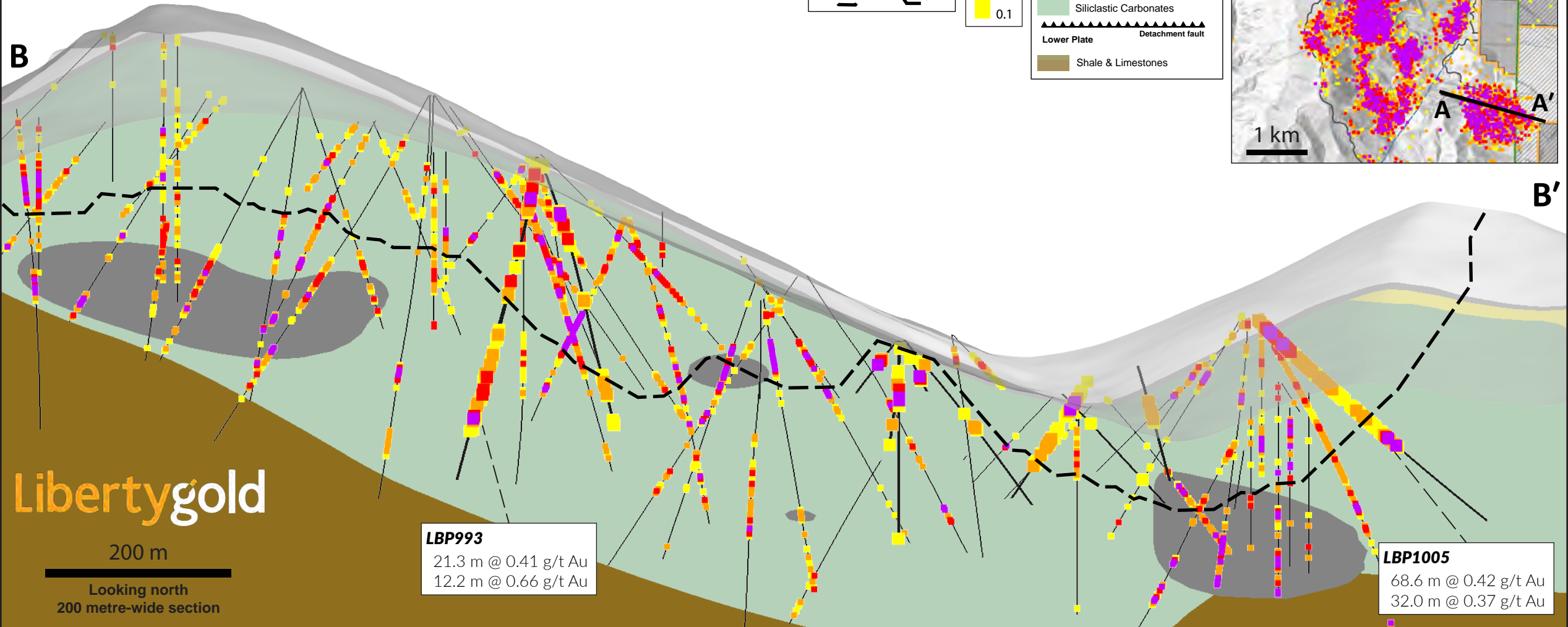
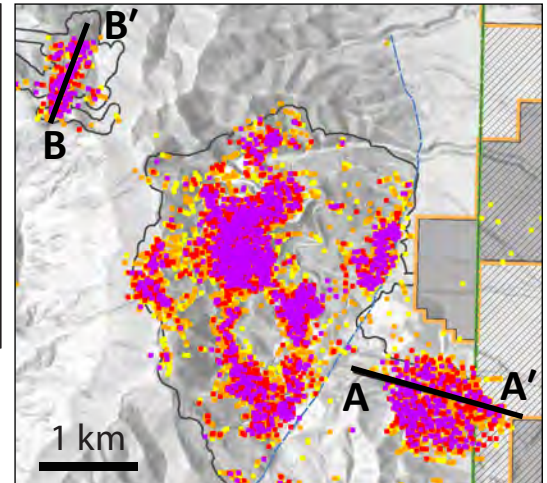
Black Pine Oxide Gold Project Back Range Zone Drill Results

Drill Trace Legend
 / Current Release
 - Previous Release & Historic Trace
 \ 2023 Resource Pits

Drill Assay Au g/t
 1.0
 0.5
 0.2
 0.1

Black Pine Geology

- Carbonaceous Material
- Upper Plate
 - Sandstone and Siltstones
- Middle Plate
 - low angle thrust fault
 - Siiclastic Carbonates
- Lower Plate
 - Detachment fault
 - Shale & Limestones



Libertygold

200 m

Looking north
200 metre-wide section

LBP993
 21.3 m @ 0.41 g/t Au
 12.2 m @ 0.66 g/t Au

LBP1005
 68.6 m @ 0.42 g/t Au
 32.0 m @ 0.37 g/t Au

Black Pine Oxide Gold Project Drill Results



Rangefront Zone

A

LBP981
51.8 m @ 0.40 g/t Au
4.6 m @ 1.16 g/t Au

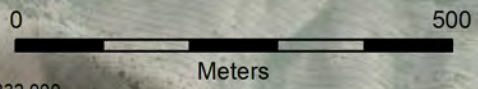
LBP986
32.0 m @ 0.50 g/t Au
54.9 m @ 0.25 g/t Au

LBP970
47.2 m @ 0.37 g/t Au
30.5 m @ 0.29 g/t Au
47.2 m @ 0.44 g/t Au

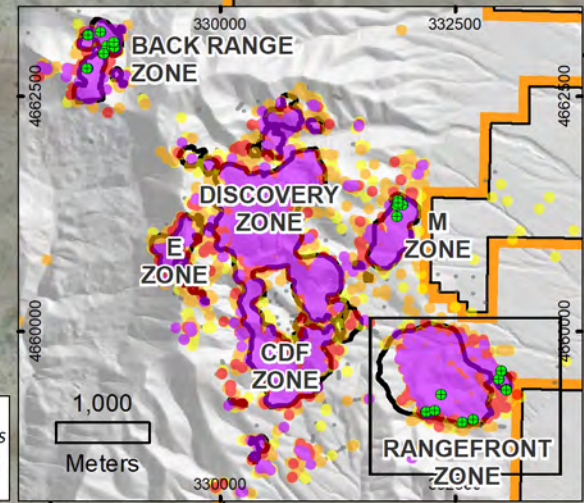
LBP964
39.6 m @ 0.40 g/t Au
39.6 m @ 0.39 g/t Au

- Drill Collars
- 3D Drill Assays**
- Gold g/t**
- 1.00 - 46.7
- 0.50 - 1.00
- 0.20 - 0.50
- 0.10 - 0.20
- 0.01 - 0.10
- Section Line
- USFS / BLM Boundary
- Resource Pits
- Project Claim Boundary

LBP1003
LBP1002
LBP1006
LBP998
LBP966
LBP971
LBP1009
LBP1007
35.1 m @ 0.48 g/t Au



3D drill assays are display weighted to preferentially show higher grade assays above lower grade in order to highlight the distribution of high grade gold.



USFS
BLM

LBP1004

LBP994
LBP999

A'

100

332,000

330,000

332,000

333,000

4,660,000

4,660,000

Black Pine Oxide Gold Project Rangefront Zone Drill Results

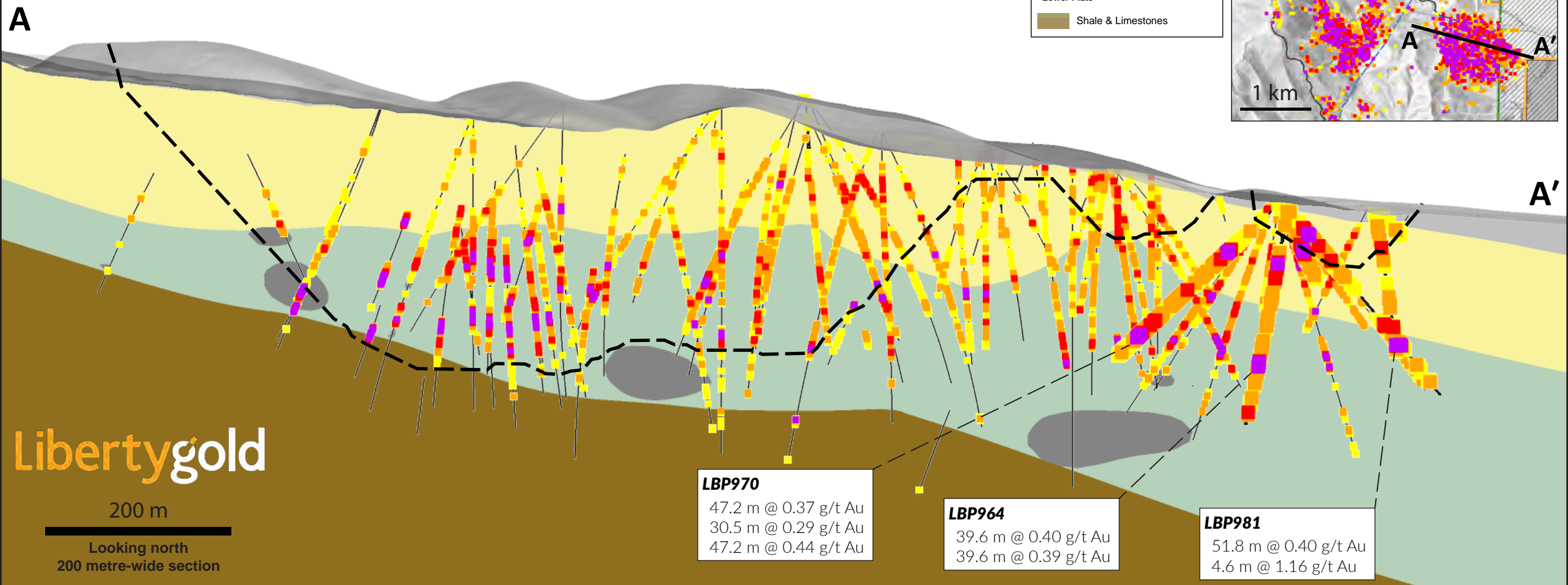
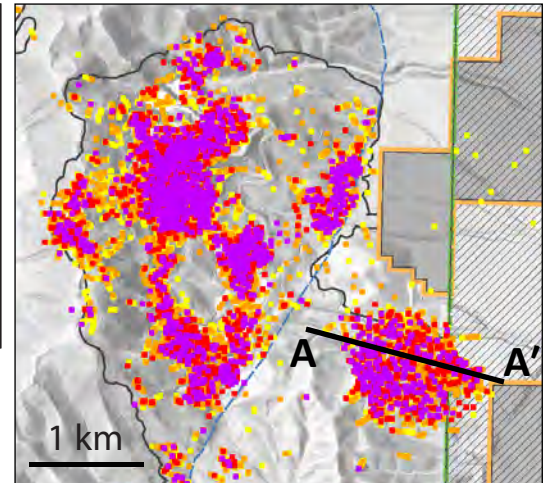
Drill Trace Legend
 / Current Release
 - Previous Release & Historic Trace

2023 Resource Pits
 \ \ \ \ \

Drill Assay Au g/t
 1.0
 0.5
 0.2
 0.1

Black Pine Geology

- Carbonaceous Material
- Upper Plate
 - Sandstone and Siltstones
- Middle Plate
 - low angle thrust fault
 - Siiclastic Carbonates
- Lower Plate
 - Detachment fault
 - Shale & Limestones



Libertygold

200 m

Looking north
200 metre-wide section

LBP970
 47.2 m @ 0.37 g/t Au
 30.5 m @ 0.29 g/t Au
 47.2 m @ 0.44 g/t Au

LBP964
 39.6 m @ 0.40 g/t Au
 39.6 m @ 0.39 g/t Au

LBP981
 51.8 m @ 0.40 g/t Au
 4.6 m @ 1.16 g/t Au