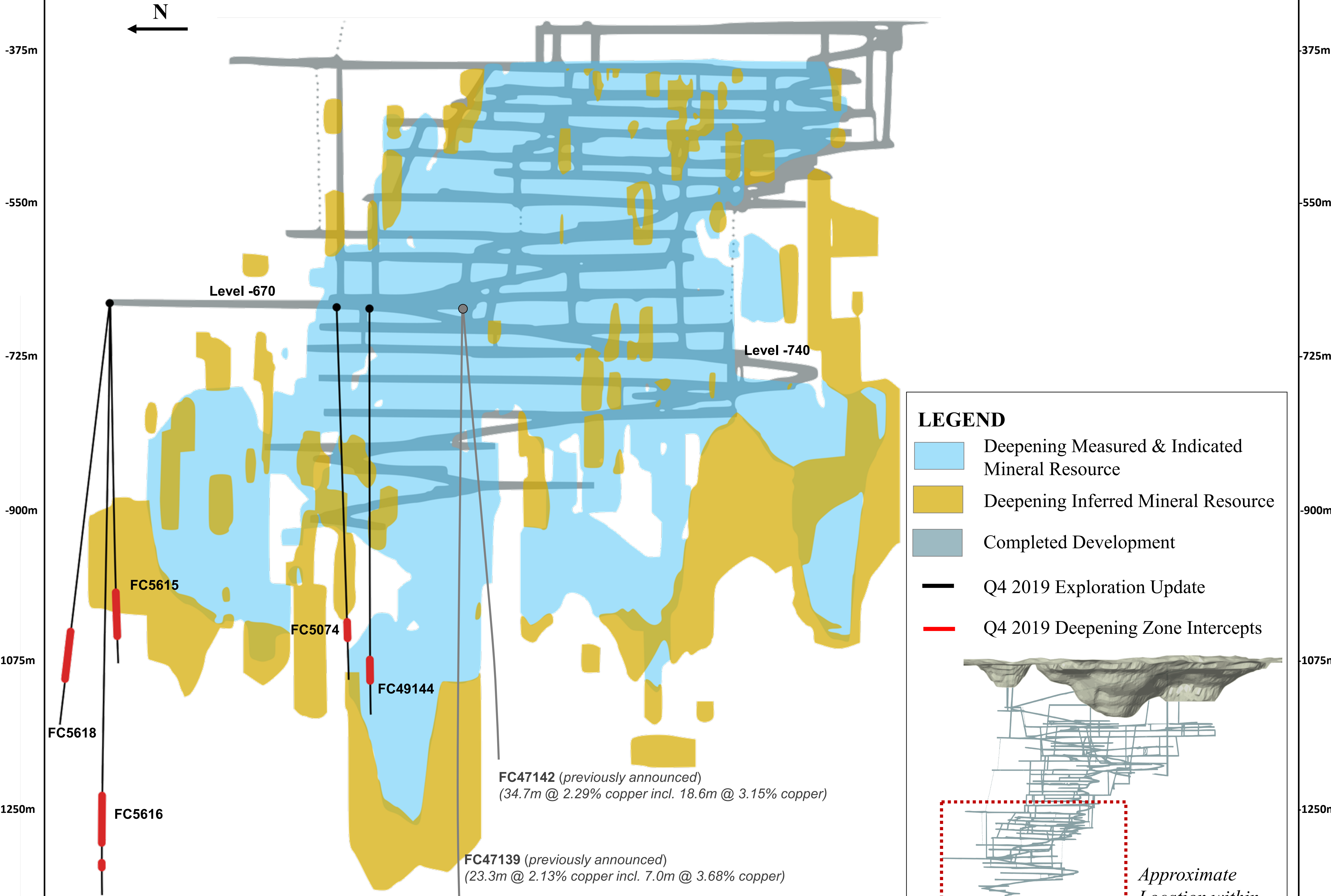


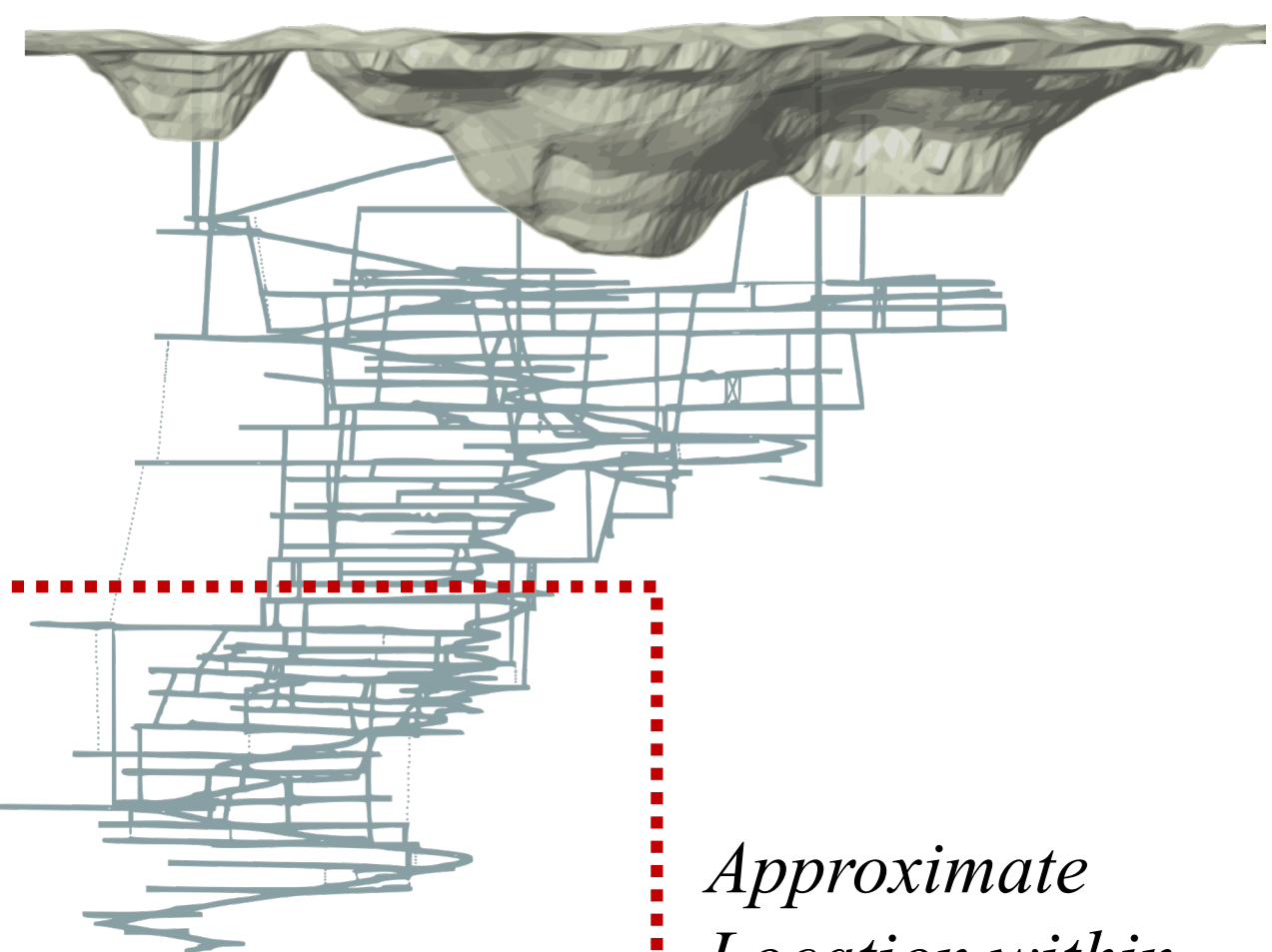
Figure 1

Deepening Extension, North-South Long Section



LEGEND

- Deepening Measured & Indicated Mineral Resource
- Deepening Inferred Mineral Resource
- Completed Development
- Q4 2019 Exploration Update
- Q4 2019 Deepening Zone Intercepts



*Approximate
Location within
Pilar Mine*

Mineral resource outline inclusive of mineral reserves. Mineral resources which are not mineral reserves do not have demonstrated economic viability. Please refer to the Company's Vale do Curaçá Property Technical Report dated November 25, 2019 for additional technical and scientific information related to the Pilar Mine. Previously announced drilling as further detailed in the Company's press release dated September 12, 2019.

Figure 2

Pilar Mine, Deepening Extension (Drilling From Level -670 and -740)

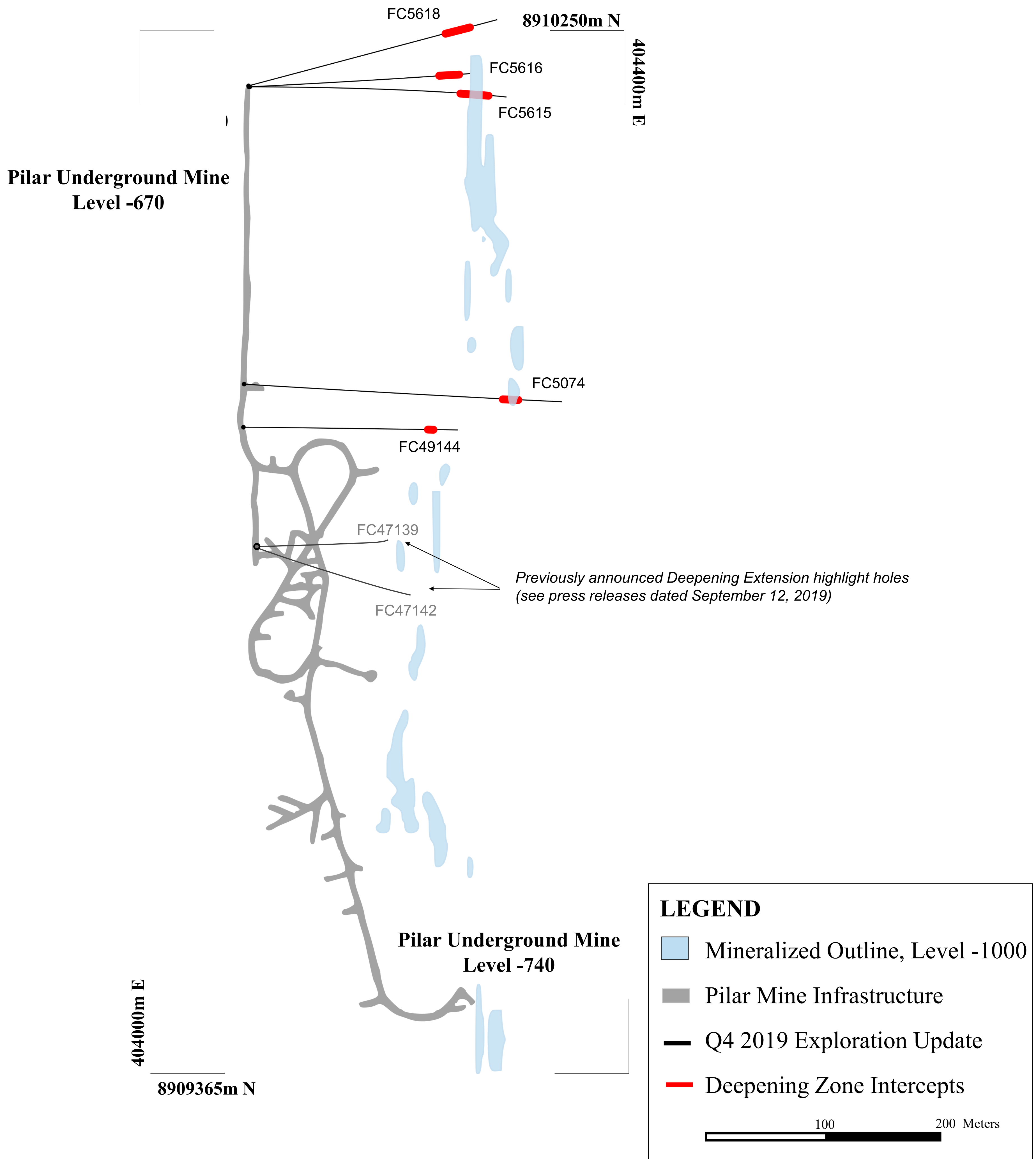
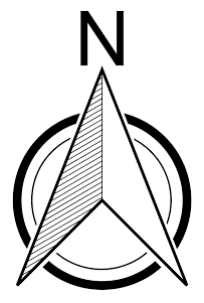
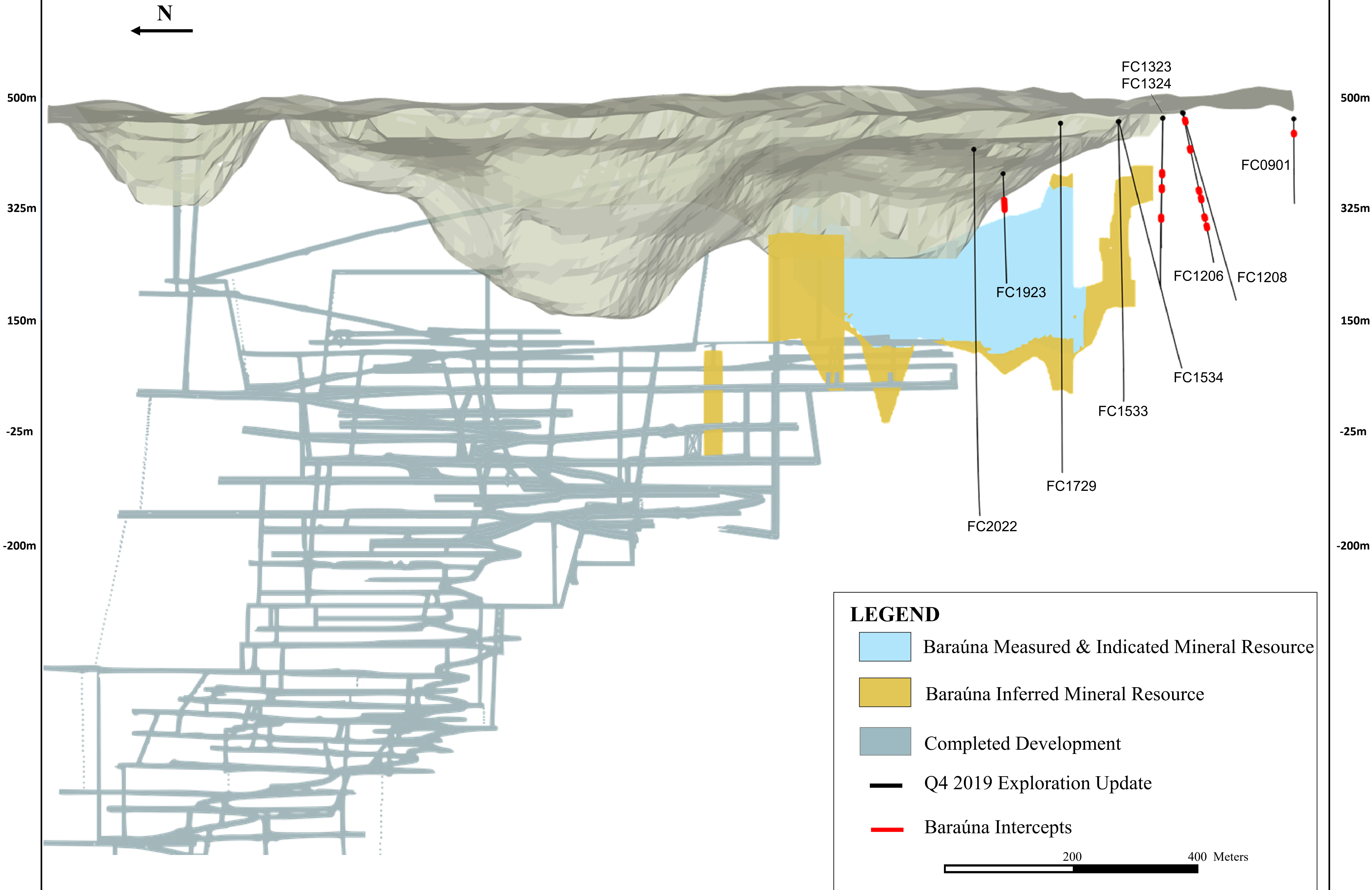
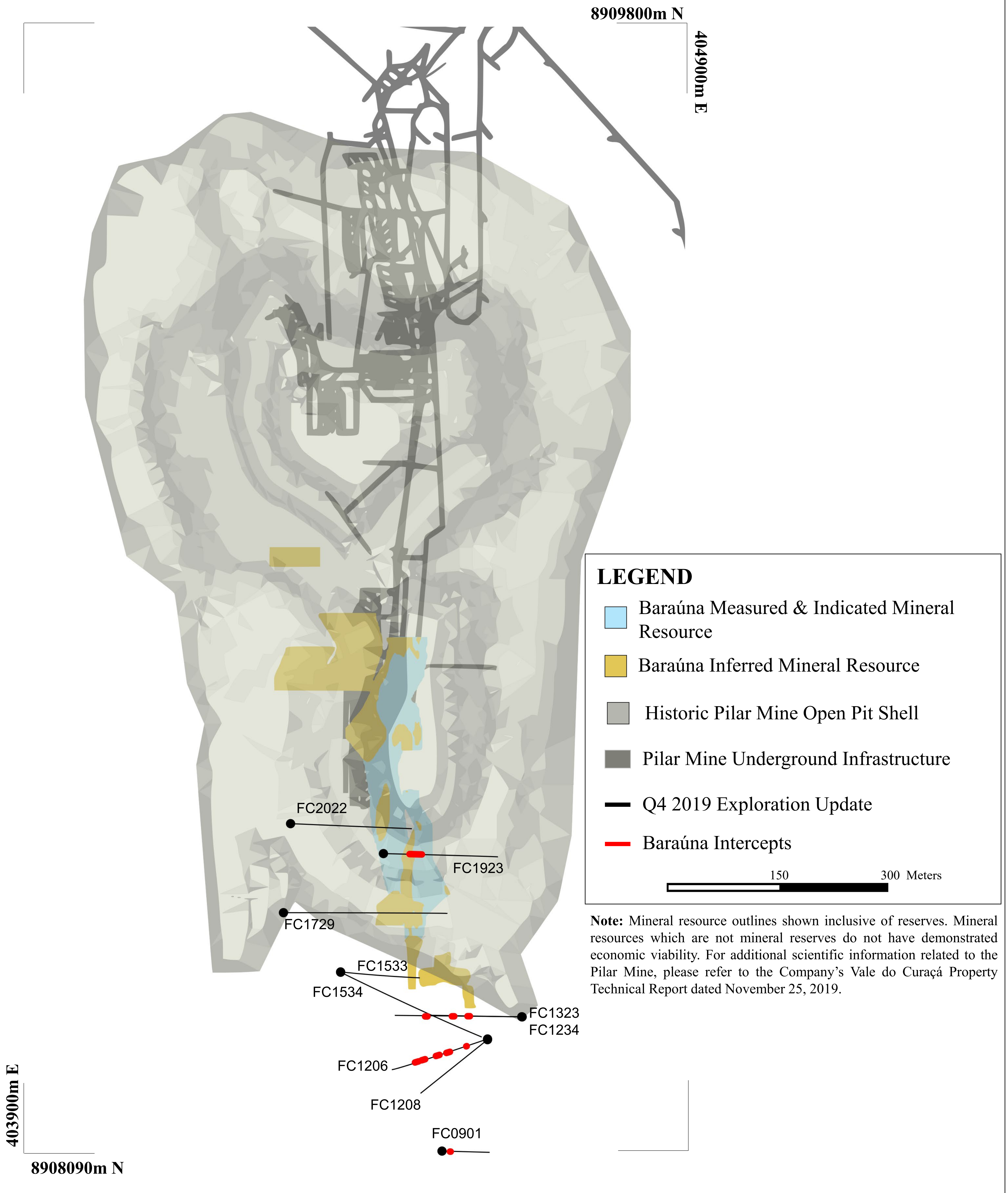
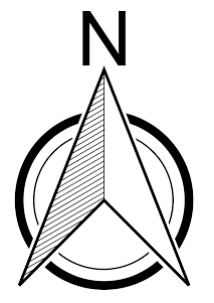


Figure 3
Baraúna, North-South Long Section



Note
Mineral resource outline shown inclusive of mineral reserves. Mineral resources which are not mineral reserves do not have demonstrated economic viability. For additional scientific information related to the Pilar Mine, please refer to the Company's Vale do Curaçá Property Technical Report dated November 25, 2019.

Figure 4
Pilar Mine, Baraúna Plan Map



LEGEND

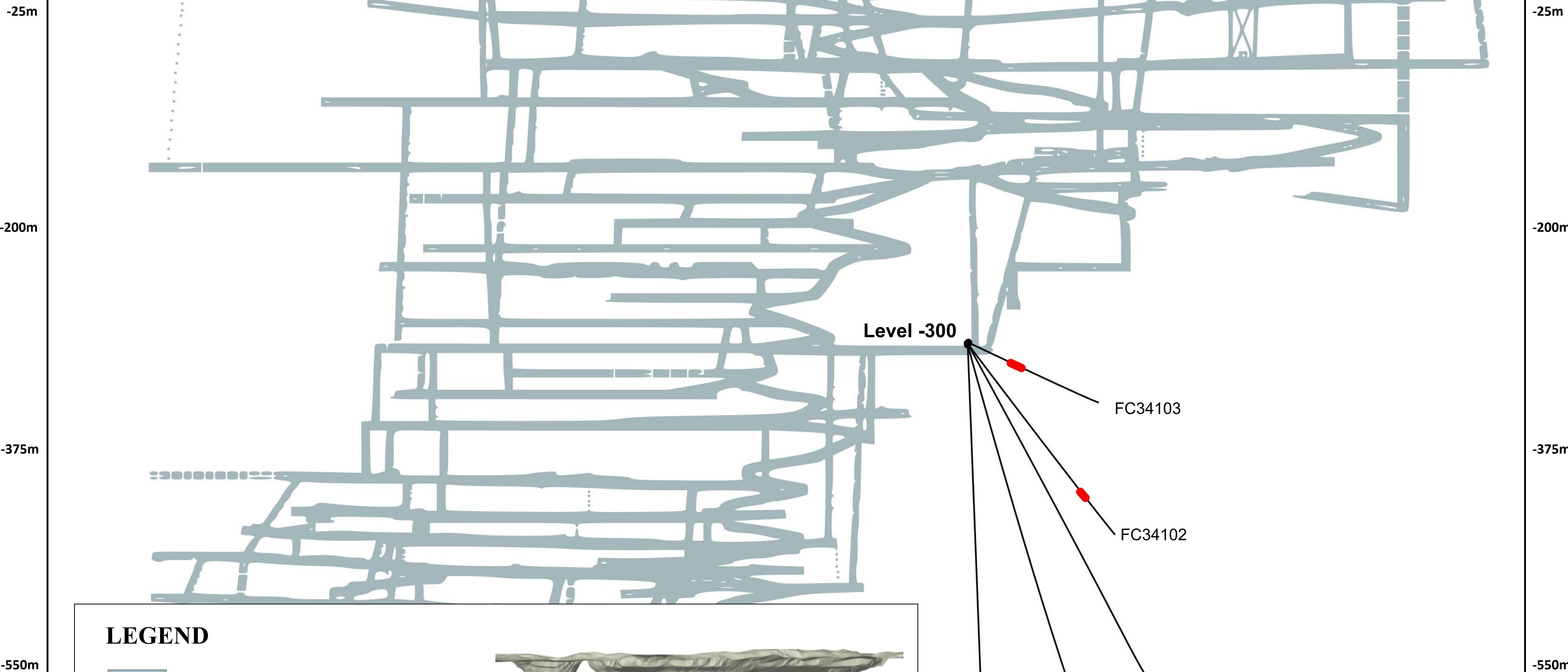
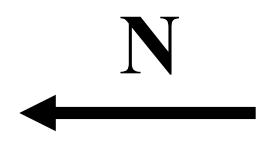
- Baraúna Measured & Indicated Mineral Resource
- Baraúna Inferred Mineral Resource
- Historic Pilar Mine Open Pit Shell
- Pilar Mine Underground Infrastructure
- Q4 2019 Exploration Update
- Baraúna Intercepts

150 300 Meters




Note: Mineral resource outlines shown inclusive of reserves. Mineral resources which are not mineral reserves do not have demonstrated economic viability. For additional scientific information related to the Pilar Mine, please refer to the Company's Vale do Curaçá Property Technical Report dated November 25, 2019.

Figure 5

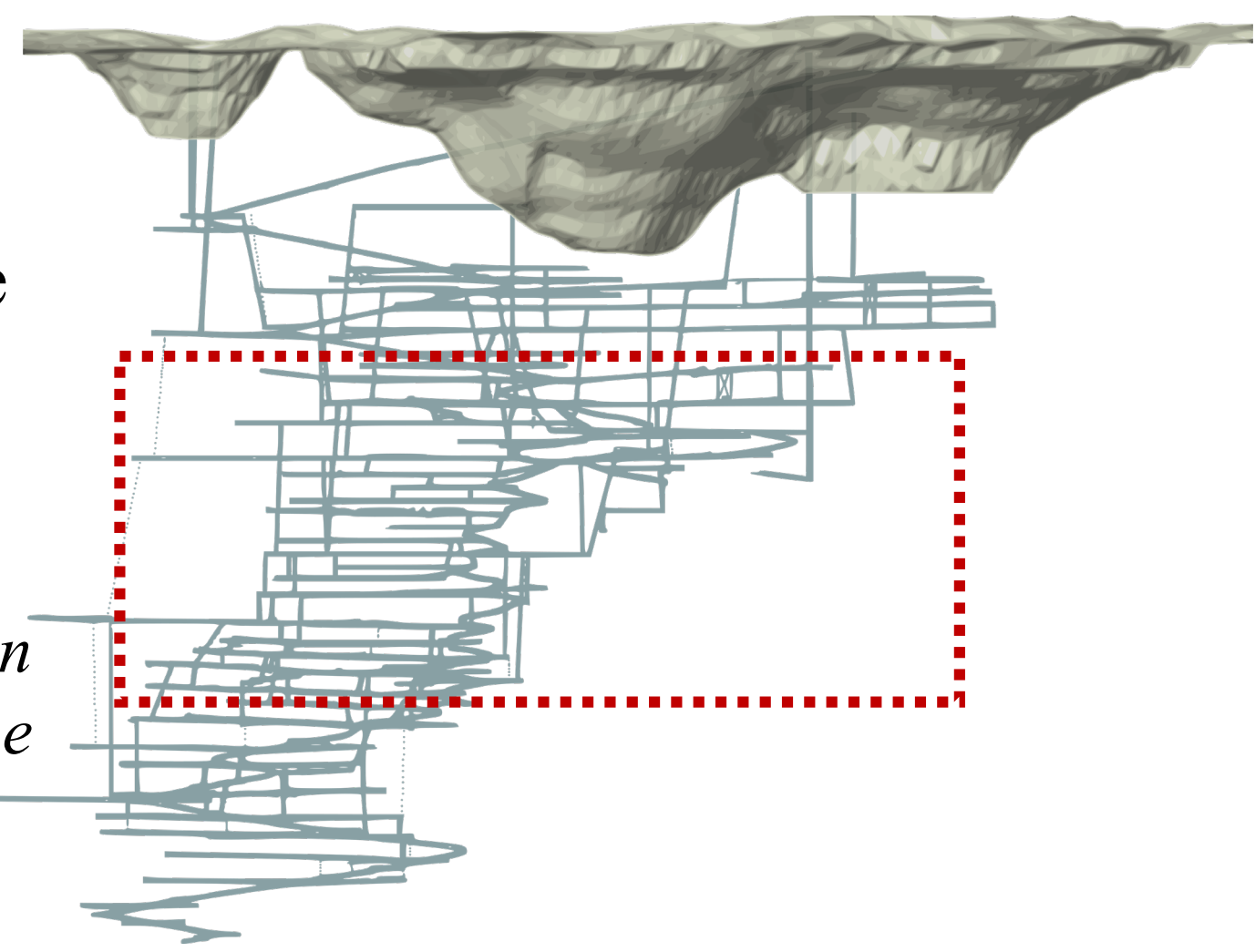
South Extension, North-South Long Section



LEGEND

-  Completed Development
-  Q4 2019 Exploration Update
-  South Extension Intercepts

*Approximate Location within
Pilar Mine*



FC34101

FC34108

FC34102

FC34103

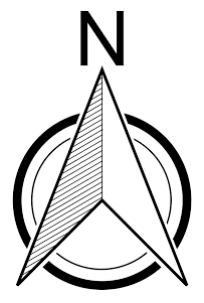
FC34104

Level -300

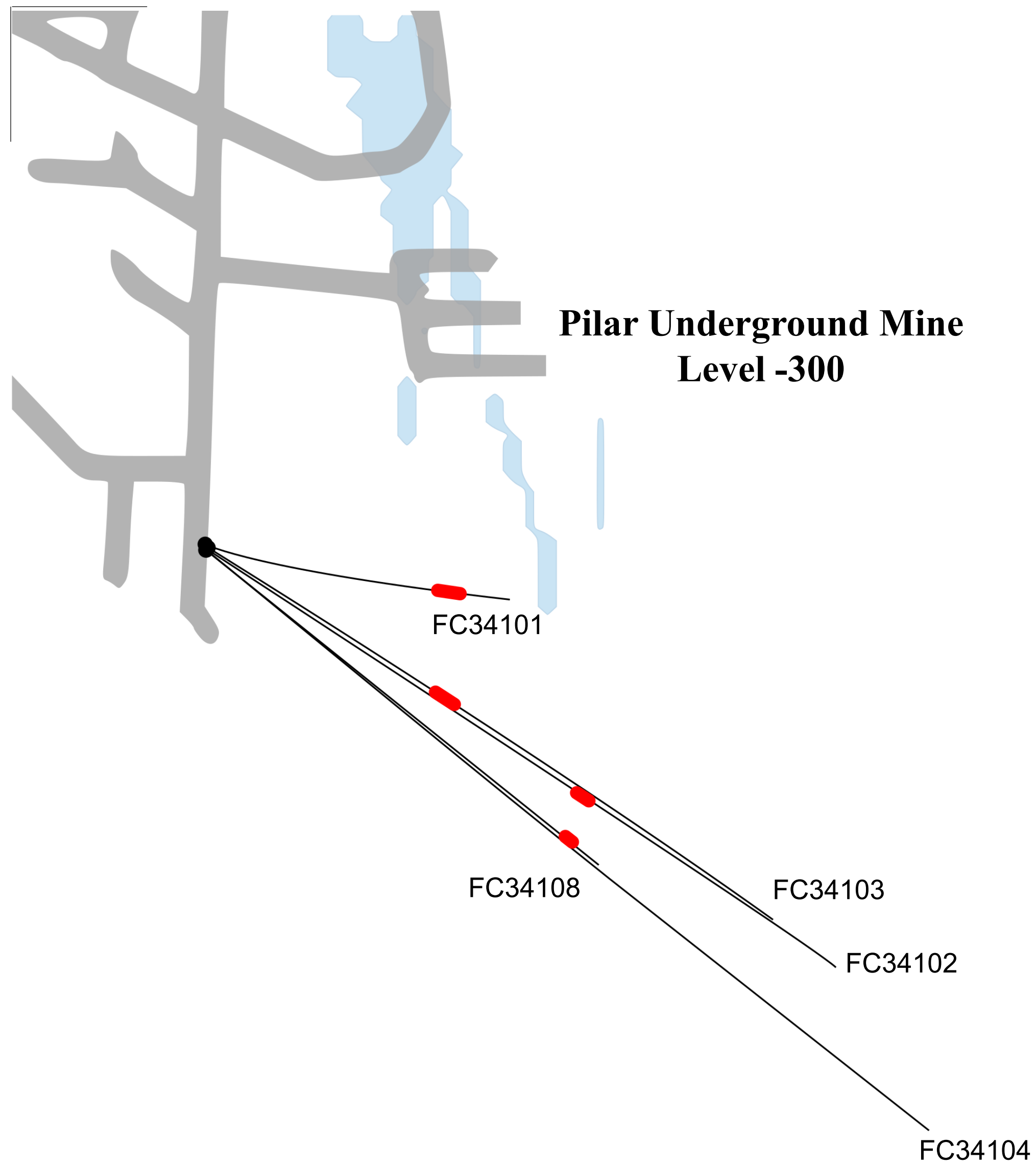
Figure 6

Pilar Mine, South Extension





(Drilling From Level -300)



8909400m N
404650m E

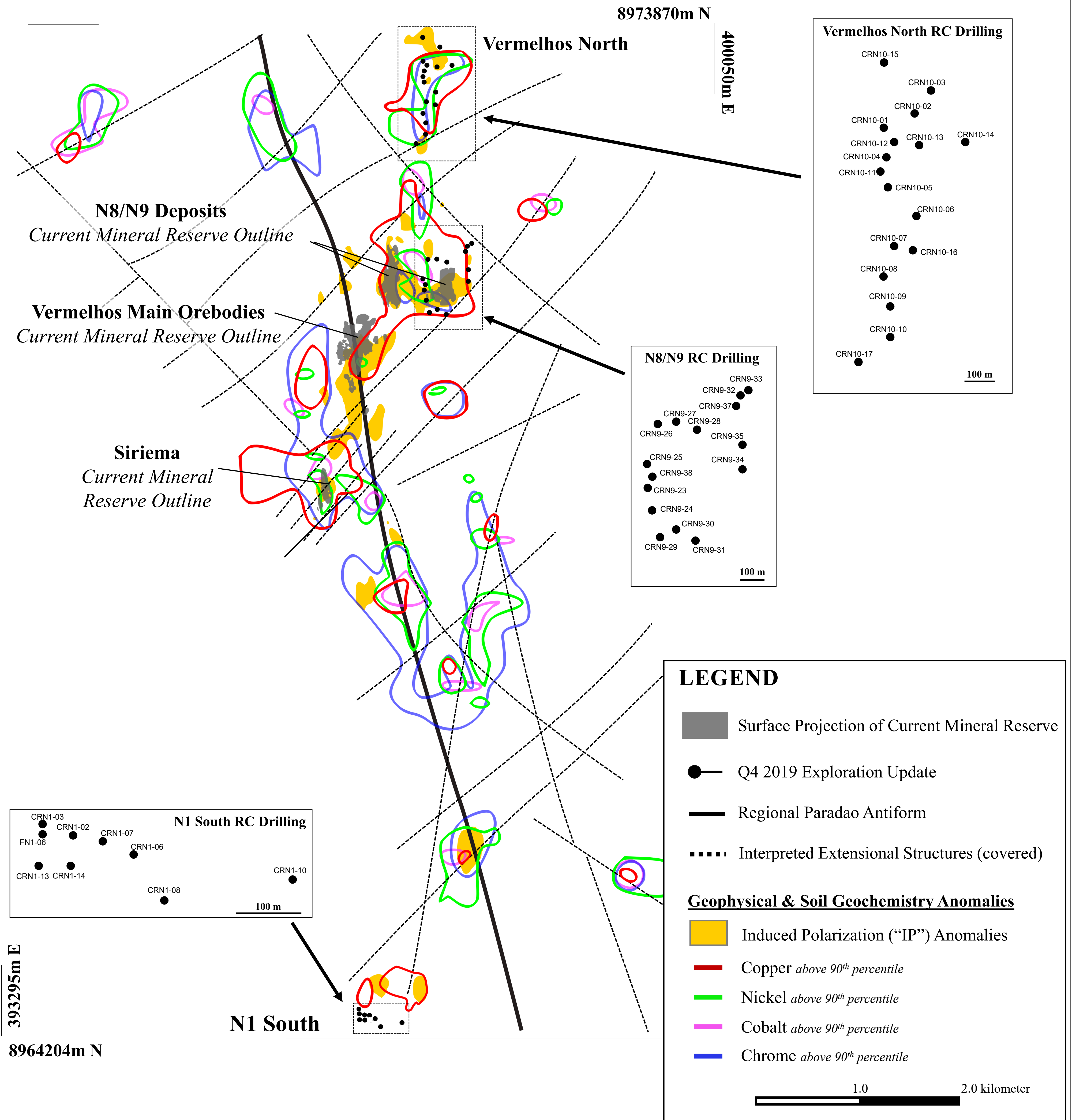
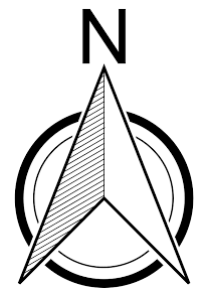


LEGEND

-  Mineralized Outline, Level -400
-  Pilar Mine Infrastructure
-  Q4 2019 Exploration Update
-  South Extension Intercepts

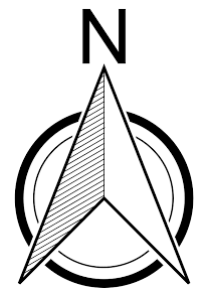
100 200 Meters

404200m E
8908850m N



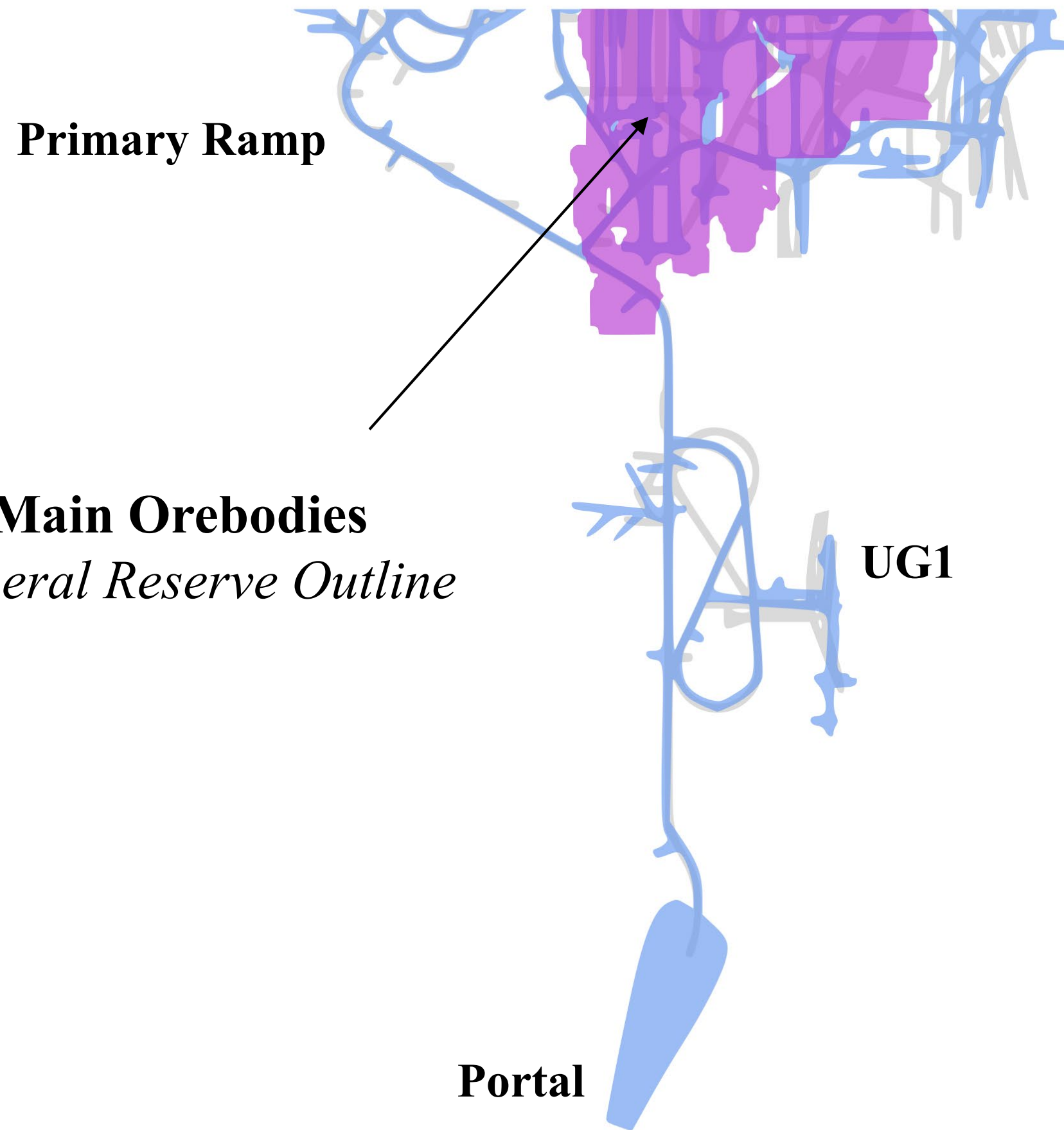
Note: Geophysical and soil geochemistry anomalies shown to demonstrate future area of exploration within the Vermelhos District. The projection is based on data compilation work which includes review of geological controls, structural analysis and copper mineralization identified during the Company's technical programs. The interpretation and boundary limits do not imply continuity of mineralization, or actual thickness of mineralization that has yet to be defined. Mineral resources which are not mineral reserves do not have demonstrated economic viability. For additional scientific information related to the Vermelhos Mine, please refer to the Company's Vale do Curaçá Property Technical Report dated November 25, 2019.

Figure 8
Siriema, Plan View



8970815m N

397150m E



Vermelhos Main Orebodies
Current Mineral Reserve Outline

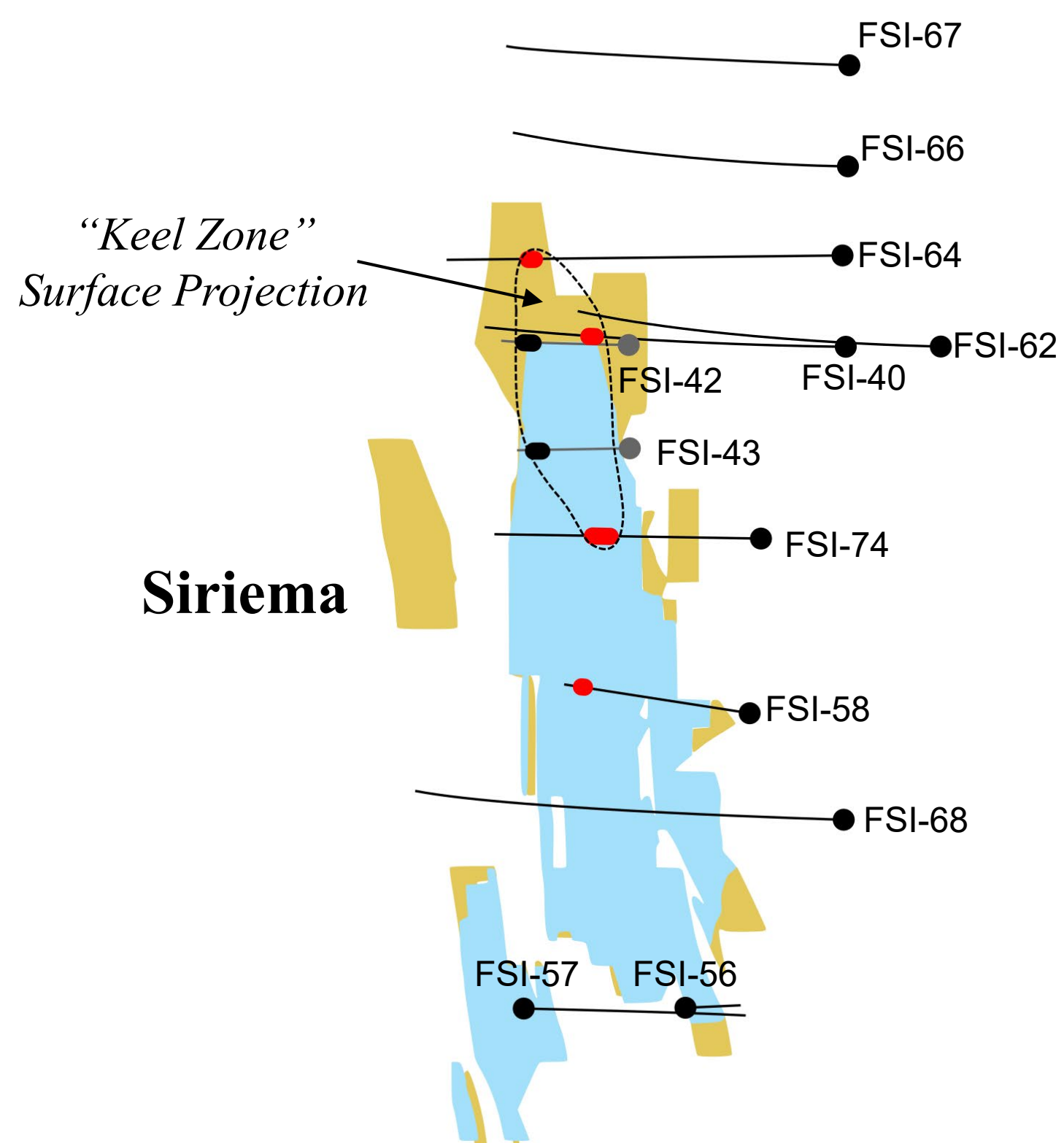
LEGEND

- Surface Projection of Current Mineral Reserve, Vermelhos Mine
- Siriema Measured & Indicated Mineral Resource
- Siriema Inferred Mineral Resource
- Q4 2019 Exploration Update
- Q4 Siriema Intercepts
- Previously released intercepts with new multi-element results

150 300 Meters

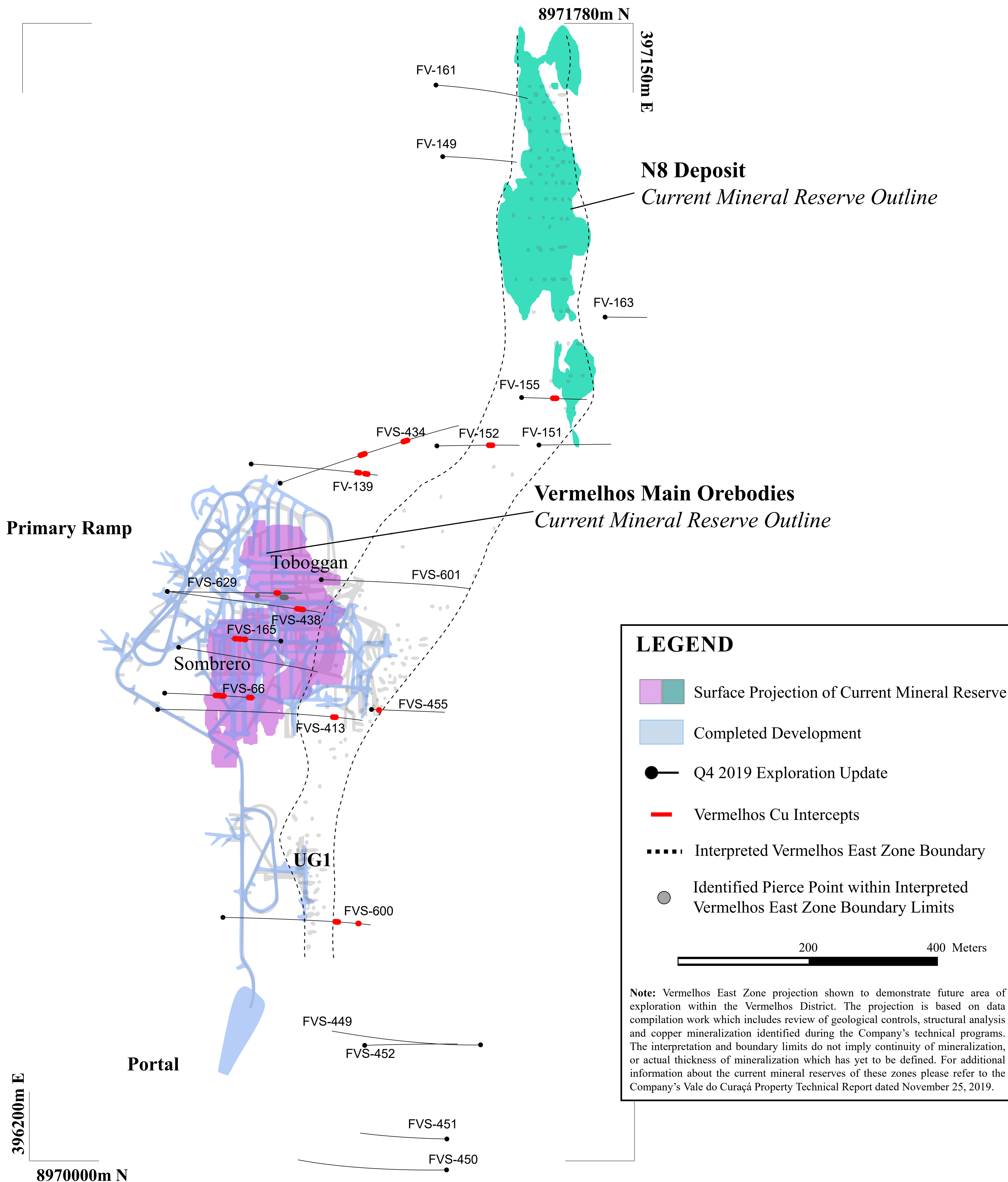
Note

Mineral resource outline shown inclusive of mineral reserves. Mineral resources which are not mineral reserves do not have demonstrated economic viability. For additional scientific information related to the Vermelhos Mine and Siriema, please refer to the Company's Vale do Curaçá Property Technical Report dated November 25, 2019.



395900m E

8969200m N



LEGEND

- Surface Projection of Current Mineral Reserve
- Completed Development
- Q4 2019 Exploration Update
- Vermelhos Cu Intercepts
- Interpreted Vermelhos East Zone Boundary
- Identified Pierce Point within Interpreted Vermelhos East Zone Boundary Limits

200 400 Meters

Note: Vermelhos East Zone projection shown to demonstrate future area of exploration within the Vermelhos District. The projection is based on data compilation work which includes review of geological controls, structural analysis and copper mineralization identified during the Company's technical programs. The interpretation and boundary limits do not imply continuity of mineralization, or actual thickness of mineralization which has yet to be defined. For additional information about the current mineral reserves of these zones please refer to the Company's Vale do Curaçá Property Technical Report dated November 25, 2019.