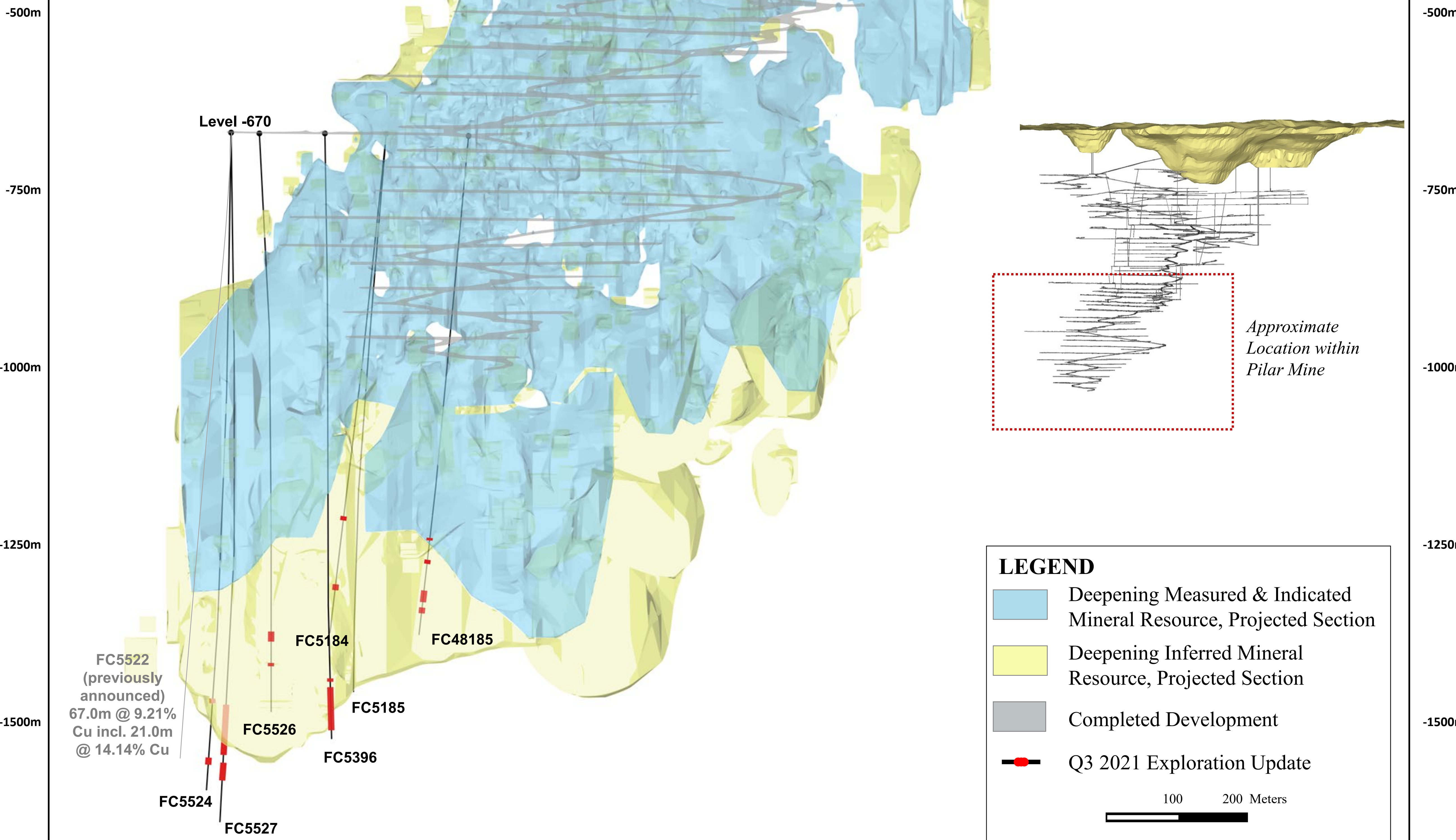
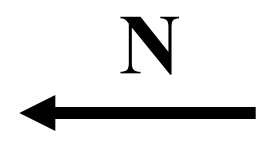


**Table 1 - Summary of Highlights**

Target / System	Estimated Zone / Exploration Target Dimensions	Highlighted Intercept(s)	Significance
<b>MCSA, In-Mine and Near-Mine Exploration Programs</b>			
Deepening Extension (Pilar Mine)	900m x 600m x 20m "Superpod" style mineralization identified over 450m in strike length at depth, remains open	<b>FC5527:</b> 71.2m @ 3.55% Cu, incl. 13.0m @ 8.87% Cu <b>FC5396:</b> 61.0m @ 2.11% Cu, incl. 18.0m @ 3.92% Cu	Increased confidence and extension of the known limits of a high-grade "Superpod" zone at depth. Together with prior results, these intercepts demonstrate localized thickening and vertical continuity of high-grade mineralization over a down-dip distance of ~365 meters throughout the 450 meters of strike length.
South Extension (Pilar Mine)	40m extension from previously modeled limits of mineral resource (open at depth and along strike)	<b>FC2974:</b> 8.7m @ 5.39% Cu, incl. 4.7m @ 7.99% Cu <b>FC2977:</b> 22.0m @ 1.57% Cu, incl. 4.0m @ 3.43% Cu	New drilling, located ~50 meters below existing mine infrastructure. Engineering work is focused on incorporating identified extensions into the Pilar Mine's near-term mine plan while additional drilling is planned to further extend high-grade mineralization.
East Zone Conduit (Vermelhos Mine)	Demonstrates continuity of mineralization along one structural corridor extending over 2km in strike length (open to depth and along strike)	<b>FV-321:</b> 24.0m @ 0.81% Cu, incl. 4.0m @ 1.50% Cu <b>FVS-876:</b> 13.5m @ 1.24% Cu, incl. 2.0m @ 2.53% Cu	Conclusion of a planned program demonstrating continuity of mineralization along a north-trending structural corridor connecting Siriema with the planned mining stopes of UG3 and UG1 within the Vermelhos Mine, north through to the N8 Deposit encompassing the Southern Vermelhos Corridor and the East Zone. The mineralized corridor now extends over 2km in strike length and remains open.
Extensions of Vermelhos Mine Orebodies	Extension of Sombrero orebody (25m beneath existing mine infrastructure) Extension of Toboggan orebody (30m extension within existing infrastructure)	<b>FVS-1162:</b> 16.9m @ 1.66% Cu, incl. 5.8m @ 9.87% Cu <b>FVS-1275:</b> 8.4m @ 3.01% Cu and 13.8m @ 4.65% Cu, incl. 5.3m @ 7.90% Cu	Ongoing infill drilling demonstrates high-grade extensions of mineralization up to ~30 meters outside of the current limits of the Sombrero and Toboggan orebodies within the existing infrastructure of the mine.
<b>MCSA Past Producing Open Pit Mine Re-Evaluation</b>			
Lagoa da Mina (Surubim District)	300m x 45m x 70m (open down-plunge to the north)	<b>FLM-94:</b> 16.0m @ 1.18% Cu and 24.0m @ 1.54% Cu, incl. 11.0M @ 2.30% Cu	New intercepts continue to highlight continuity of high-grade mineralization at depth and extend the known limits of mineralization starting at ~70m beneath the historic open pit.
<b>NX Gold Mine Highlights</b>			
Santo Antonio Vein Extension	525m x 400m x 5m (open along strike and to depth)	<b>SA104:</b> 8.8m @ 3.92 gpt Au, incl. 2.6m @ 6.33 gpt Au <b>SA94B:</b> 6.0m @ 23.61 gpt Au	New drilling 40 meters down-plunge of the deepest known gold mineralization and 115 meters beyond the current limit of the Inferred mineral resource shell continues to demonstrate continuity of Santo Antonio to depth.
Matinha Vein Extension	750m x 150m x 3m (increasing thickness to depth; open along strike and at depth)	<b>MAT25:</b> 10.9m @ 3.52 gpt Au	Extensions of known limits of mineralization ~65 meters down-plunge from prior drilling with increasing thicknesses. Identification of two parallel vein structures, known as the upper and lower veins, separated by approximately 200 meters.

# Figure 1

## Deepening Extension, North-South Long Section



FC5522  
(previously  
announced)  
67.0m @ 9.21%  
Cu incl. 21.0m  
@ 14.14% Cu

**LEGEND**

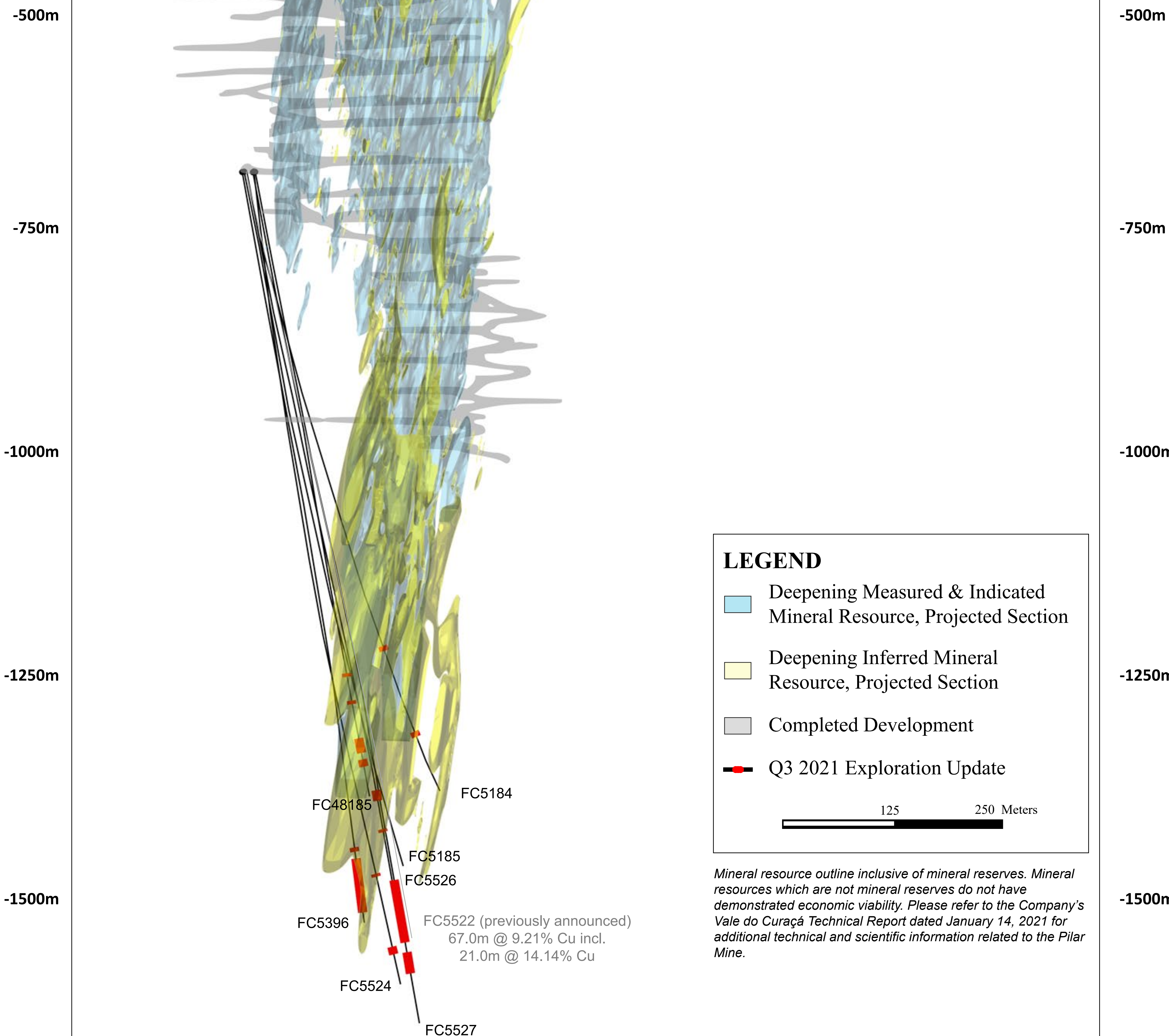
- Deepening Measured & Indicated Mineral Resource, Projected Section
- Deepening Inferred Mineral Resource, Projected Section
- Completed Development
- Q3 2021 Exploration Update

100    200 Meters

*Mineral resource outline inclusive of mineral reserves. Mineral resources which are not mineral reserves do not have demonstrated economic viability. Please refer to the Company's Vale do Curaçá Technical Report dated January 14, 2021 for additional technical and scientific information related to the Pilar Mine.*

**Figure 2**  
Deepening Extension, West-East Composite Section

W  
←



**LEGEND**

- Deepening Measured & Indicated Mineral Resource, Projected Section
- Deepening Inferred Mineral Resource, Projected Section
- Completed Development
- Q3 2021 Exploration Update

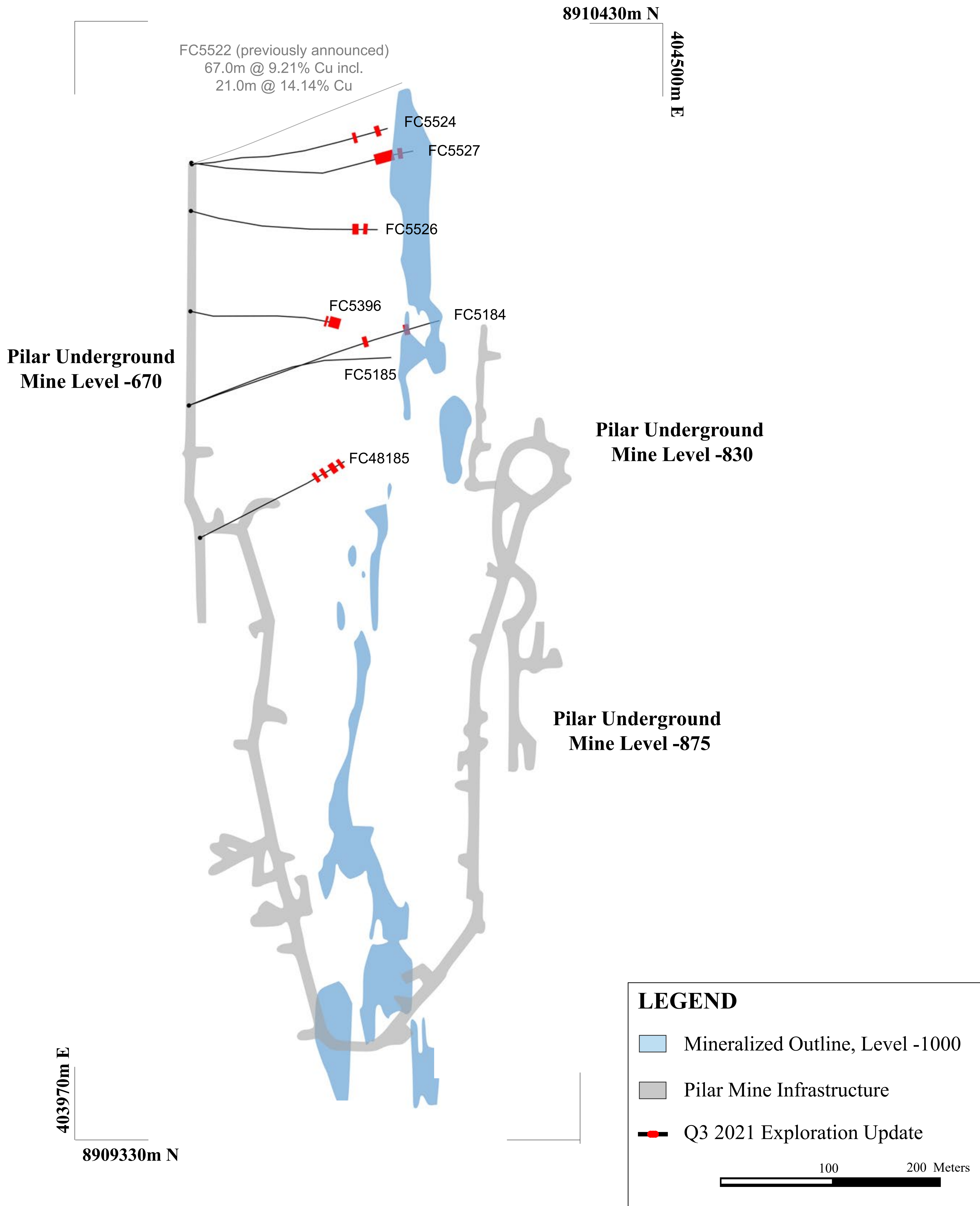
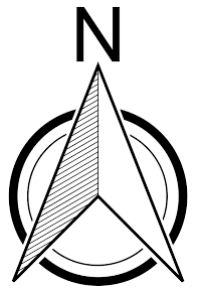
125      250 Meters

*Mineral resource outline inclusive of mineral reserves. Mineral resources which are not mineral reserves do not have demonstrated economic viability. Please refer to the Company's Vale do Curaçá Technical Report dated January 14, 2021 for additional technical and scientific information related to the Pilar Mine.*

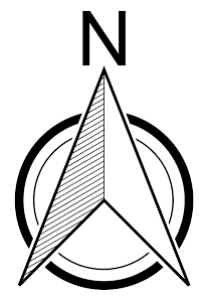
# Figure 3

## Pilar Mine, Deepening Extension

(Drilling From Level -670)



**Figure 4**  
Pilar Mine, South Extension  
(Drilling From Level -170)



8909248m N  
404570m E



**LEGEND**

- Mineralized Outline, Level -210
- Pilar Mine Infrastructure
- Q3 2021 Exploration Update

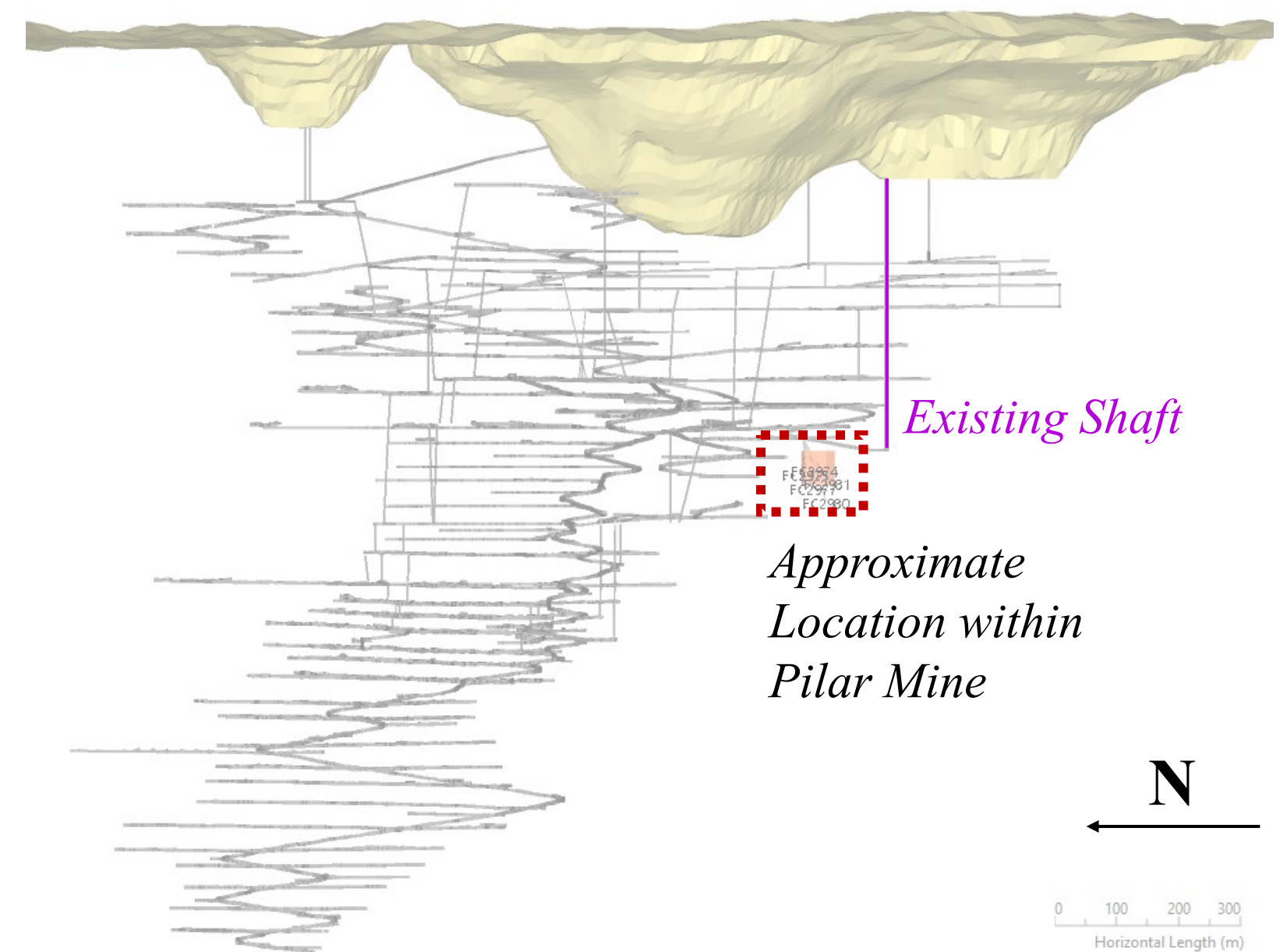
50      100 Meters

**Notes:**  
(\*) Denotes short-term drilling undertaken for mine planning purposes that intersected new unmodeled mineralized envelopes.

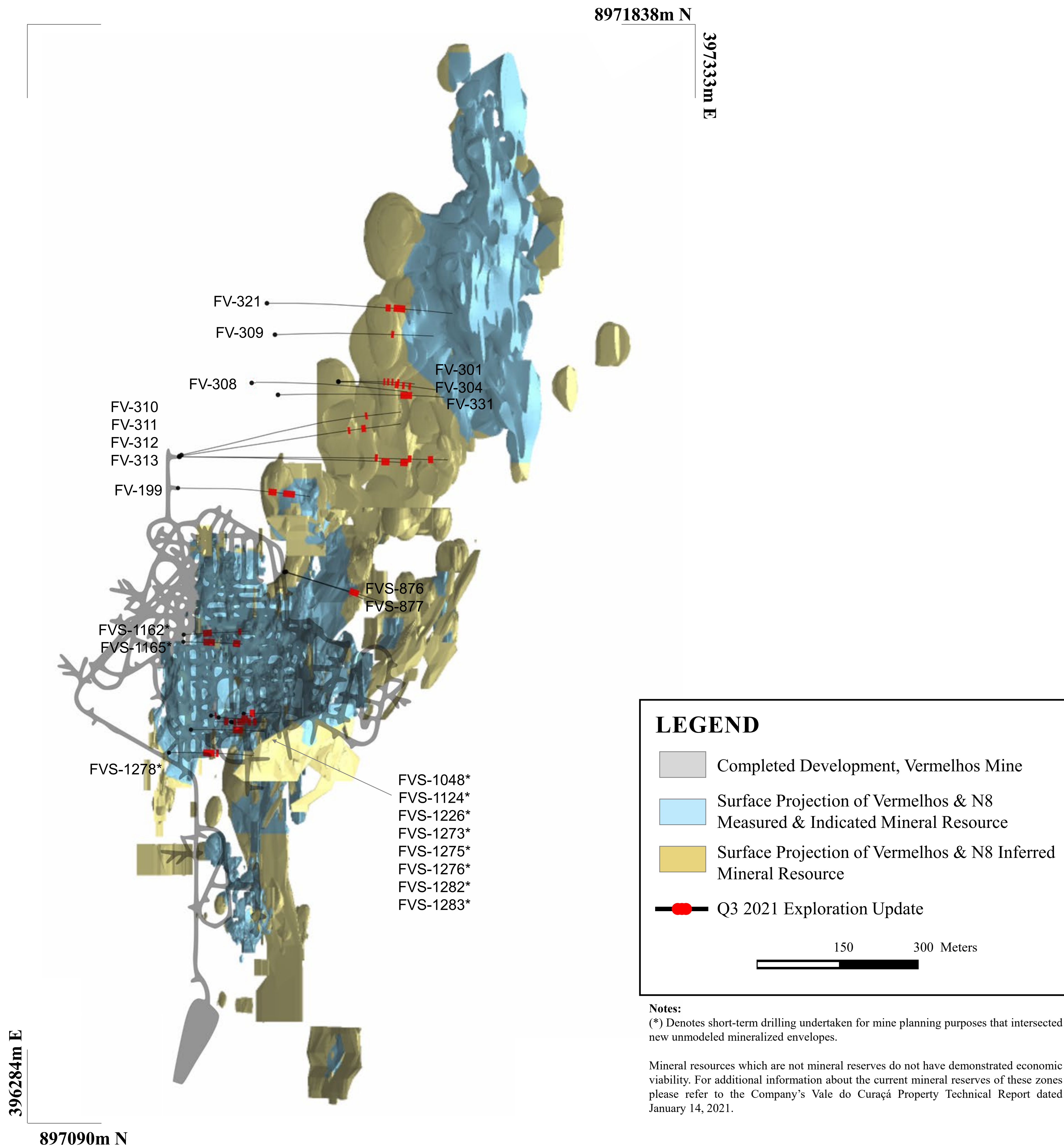
**Pilar Underground  
Mine Level -165**

4042940m E  
8908900m N

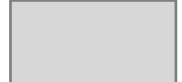
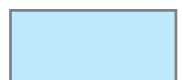
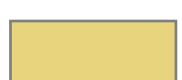

**Section view for reference**



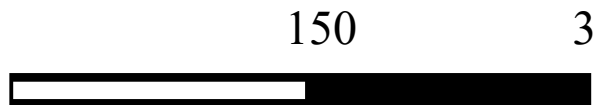
**Figure 5**  
Vermelhos Main/East Zone Drilling, Plan View



**LEGEND**

-  Completed Development, Vermelhos Mine
-  Surface Projection of Vermelhos & N8 Measured & Indicated Mineral Resource
-  Surface Projection of Vermelhos & N8 Inferred Mineral Resource
-  Q3 2021 Exploration Update

150      300 Meters

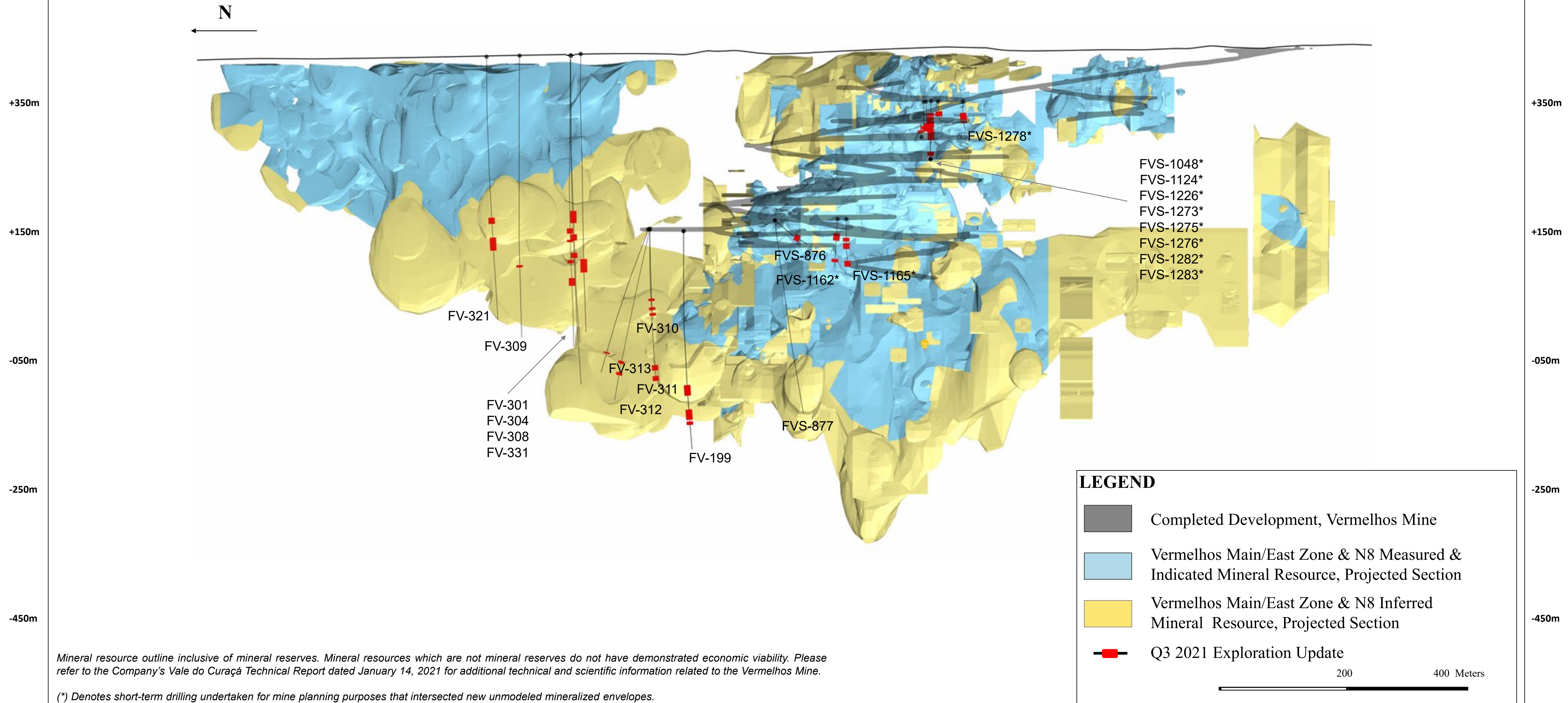


**Notes:**  
(\* ) Denotes short-term drilling undertaken for mine planning purposes that intersected new unmodeled mineralized envelopes.

Mineral resources which are not mineral reserves do not have demonstrated economic viability. For additional information about the current mineral reserves of these zones please refer to the Company's Vale do Curaçá Property Technical Report dated January 14, 2021.

**Figure 6**

Vermelhos Main/East Zone & N8, North-South Long Section



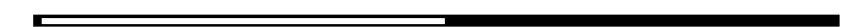
Mineral resource outline inclusive of mineral reserves. Mineral resources which are not mineral reserves do not have demonstrated economic viability. Please refer to the Company's Vale do Curaçá Technical Report dated January 14, 2021 for additional technical and scientific information related to the Vermelhos Mine.

(\*) Denotes short-term drilling undertaken for mine planning purposes that intersected new unmodeled mineralized envelopes.

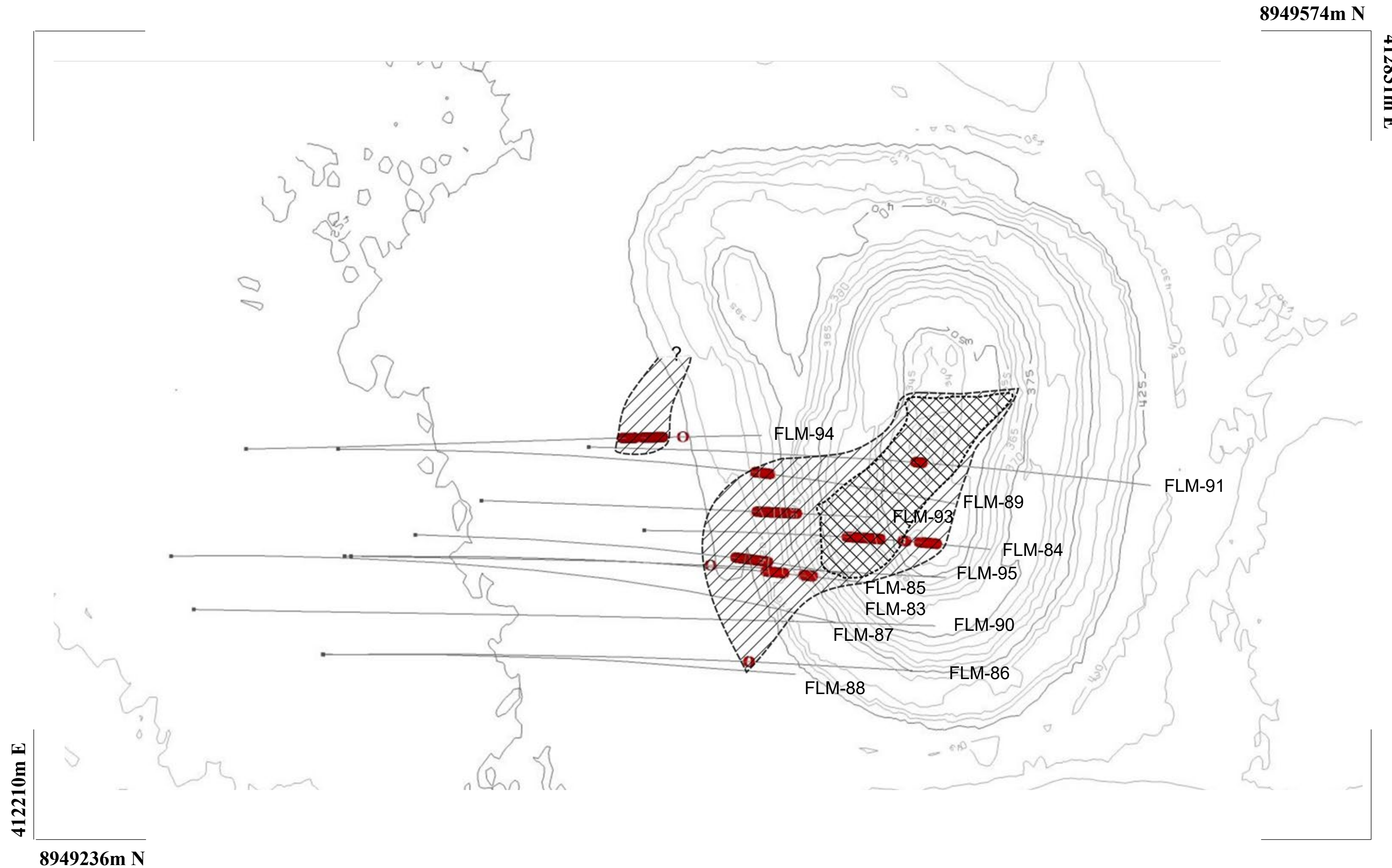
**LEGEND**

- Completed Development, Vermelhos Mine
- Vermelhos Main/East Zone & N8 Measured & Indicated Mineral Resource, Projected Section
- Vermelhos Main/East Zone & N8 Inferred Mineral Resource, Projected Section
- Q3 2021 Exploration Update

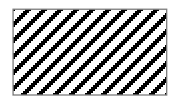
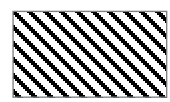

200 400 Meters



**Figure 7**  
Lagoa da Mina, Surubim District  
(Drilling from Surface)



**LEGEND**

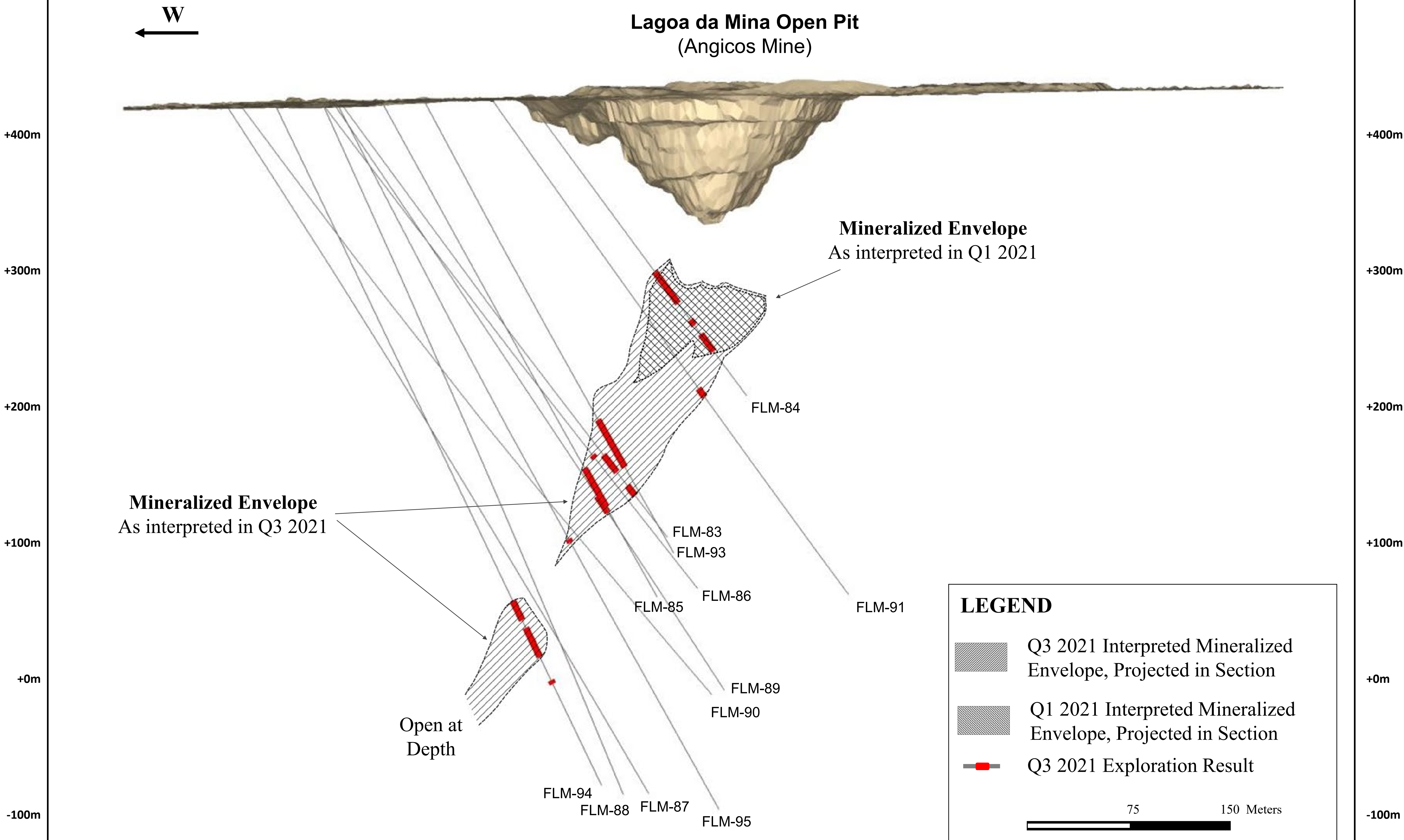
-  Q3 2021 Interpreted Mineralized Envelope, Surface Projection
-  Q1 2021 Interpreted Mineralized Envelope, Surface Projection
-  Q3 2021 Exploration Update

100                      200 Meters

**Notes:**  
Lagoa da Mina interpreted mineralized projection is based on data compilation work which includes review of geological controls, structural analysis and copper mineralization identified during the Company's technical programs. The interpretation and boundary limits do not imply continuity of mineralization, or actual thickness of mineralization which has yet to be defined.

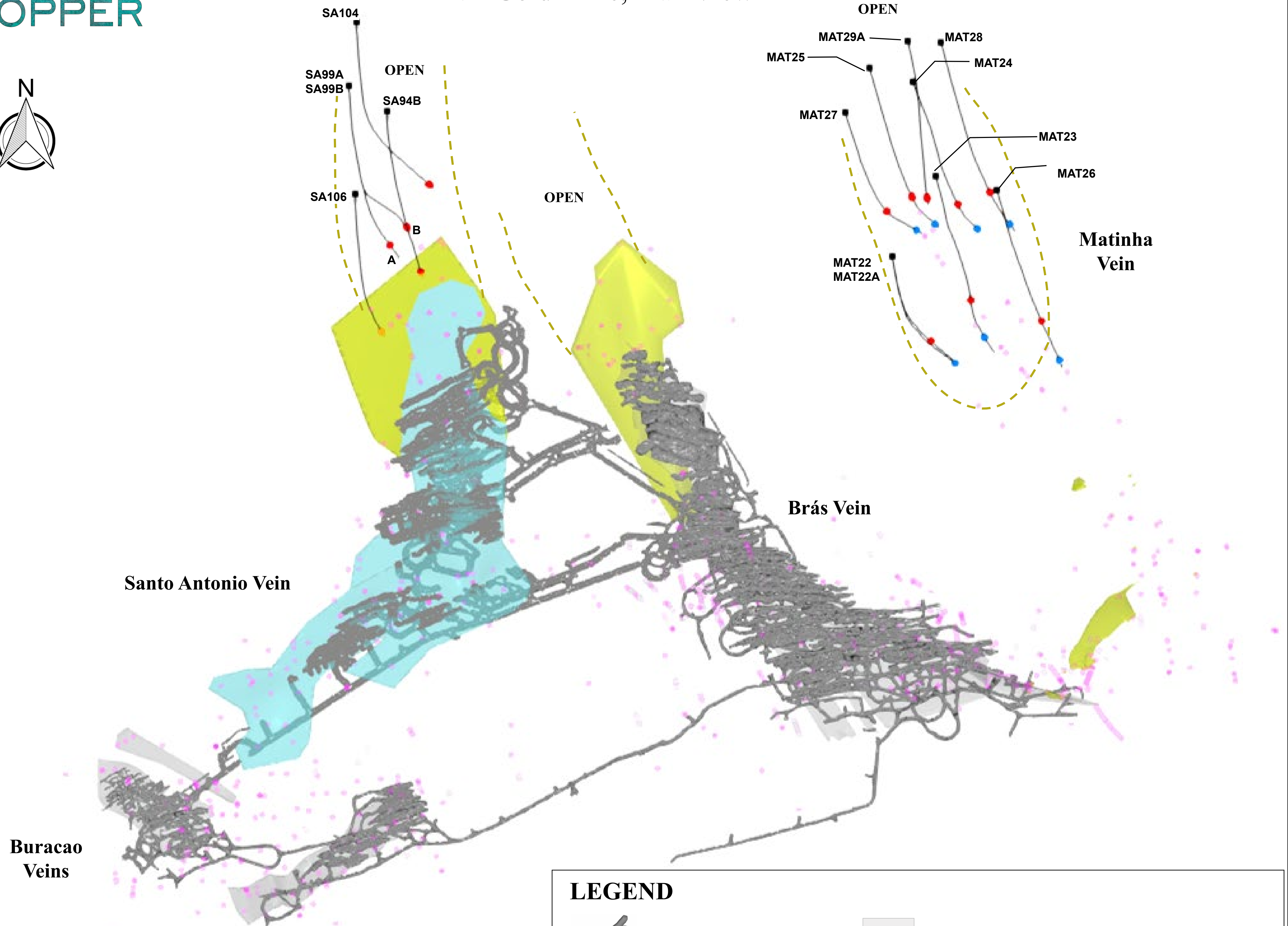
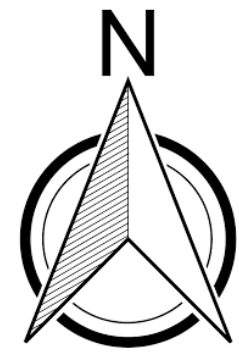


**Figure 8**  
Lagoa da Mina, Surubim District, West-East Section



**Note:**  
Lagoa da Mina interpreted mineralized projection is based on data compilation work which includes review of geological controls, structural analysis and copper mineralization identified during the Company's technical programs. The interpretation and boundary limits do not imply continuity of mineralization, or actual thickness of mineralization which has yet to be defined.

**Figure 9**  
NX Gold Mine, Plan View



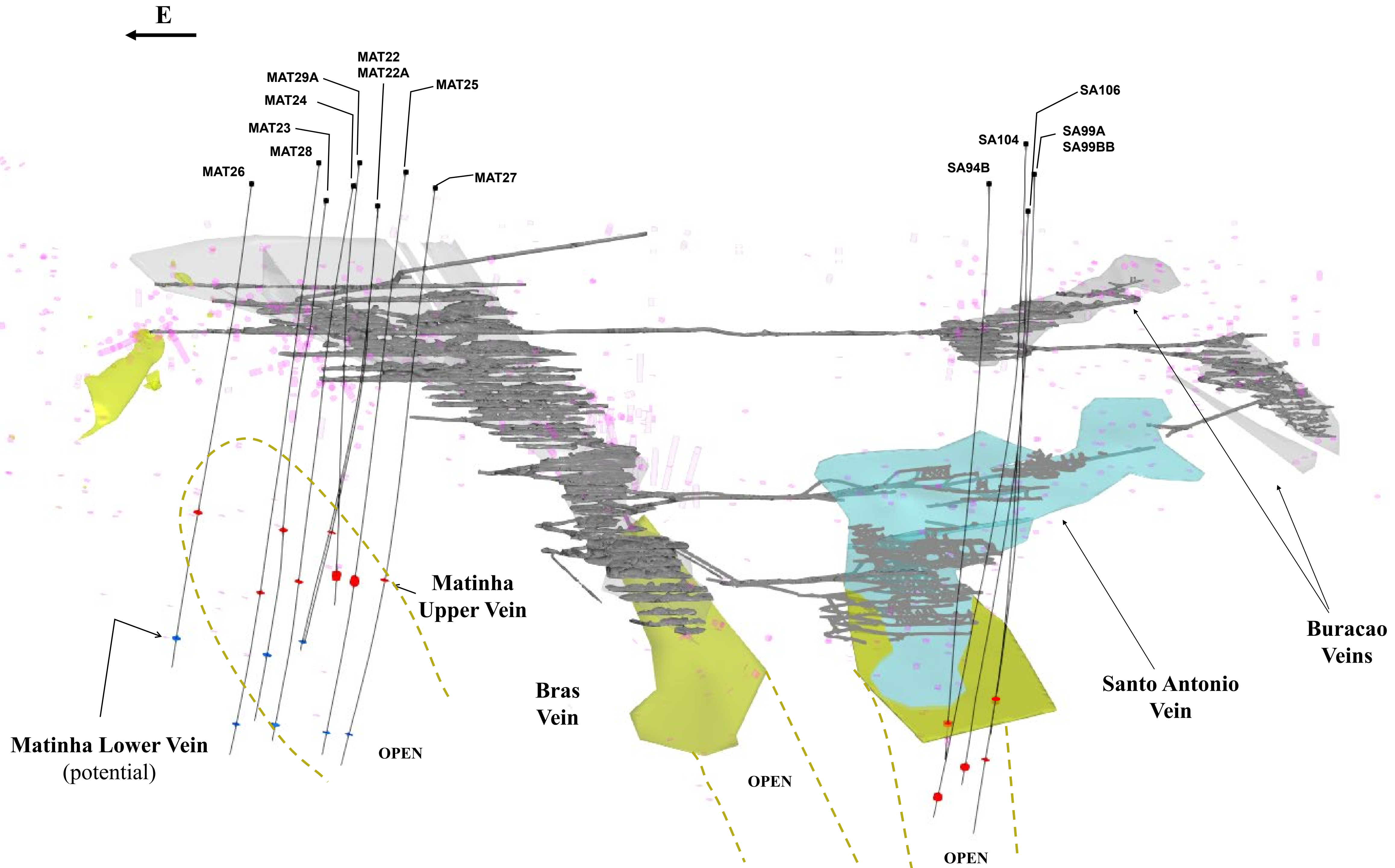
**LEGEND**

Underground Development	Vertical Projection of Historical Mineral Zones
Q3 2021 drill hole traces	Vertical Projection of Inferred Mineral Resource <i>Effective date September 30, 2020</i>
Q3 2021 New Vein Intersection and Upper Matinha vein	Vertical Projection of Indicated Mineral Resource <i>Effective date September 30, 2020</i>
Q3 2021 intersection in Lower Matinha vein	Previously announced vein intersection





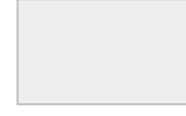

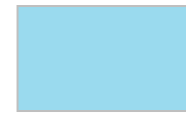

0 100 200 300 400 500 Meters

*Mineral resource outline(s) inclusive of mineral reserves. Mineral resources which are not mineral reserves do not have demonstrated economic viability. Please refer to the Company's NX Gold Mine Technical Report dated January 8, 2021 for additional technical and information related to the NX Gold Mine.*

**Figure 10**  
NX Gold Mine, East-West Vertical Long Section



**LEGEND**

-  Underground Development
-  Q3 2021 drill hole traces
-  Q3 2021 New Vein Intersection and Upper Matinha vein
-  Q3 2021 intersection in Lower Matinha vein
-  Vertical Projection of Historical Mineral Zones
-  Vertical Projection of Inferred Mineral Resource  
*Effective date September 30, 2020*
-  Vertical Projection of Indicated Mineral Resource  
*Effective date September 30, 2020*
-  Previously announced vein intersection

0 100 200 300 400 500 Meters

*Mineral resource outline(s) inclusive of mineral reserves. Mineral resources which are not mineral reserves do not have demonstrated economic viability. Please refer to the Company's NX Gold Mine Technical Report dated January 8, 2021 for additional technical and information related to the NX Gold Mine.*