

Black Pine Oxide Gold Project Drill Results

Libertygold

Rangefront Zone

LBP954
44.2 m @ 0.26 g/t Au
73.2 m @ 0.45 g/t Au

LBP975
35.1 m @ 0.59 g/t Au
inc 3.0 m @ 2.66 g/t Au

LBP941
76.2 m @ 0.61 g/t Au
inc 12.2 m @ 2.47 g/t Au

LBP958

LBP950

LBP946

LBP962

LBP960

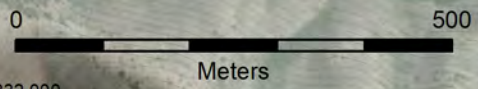
A'

A

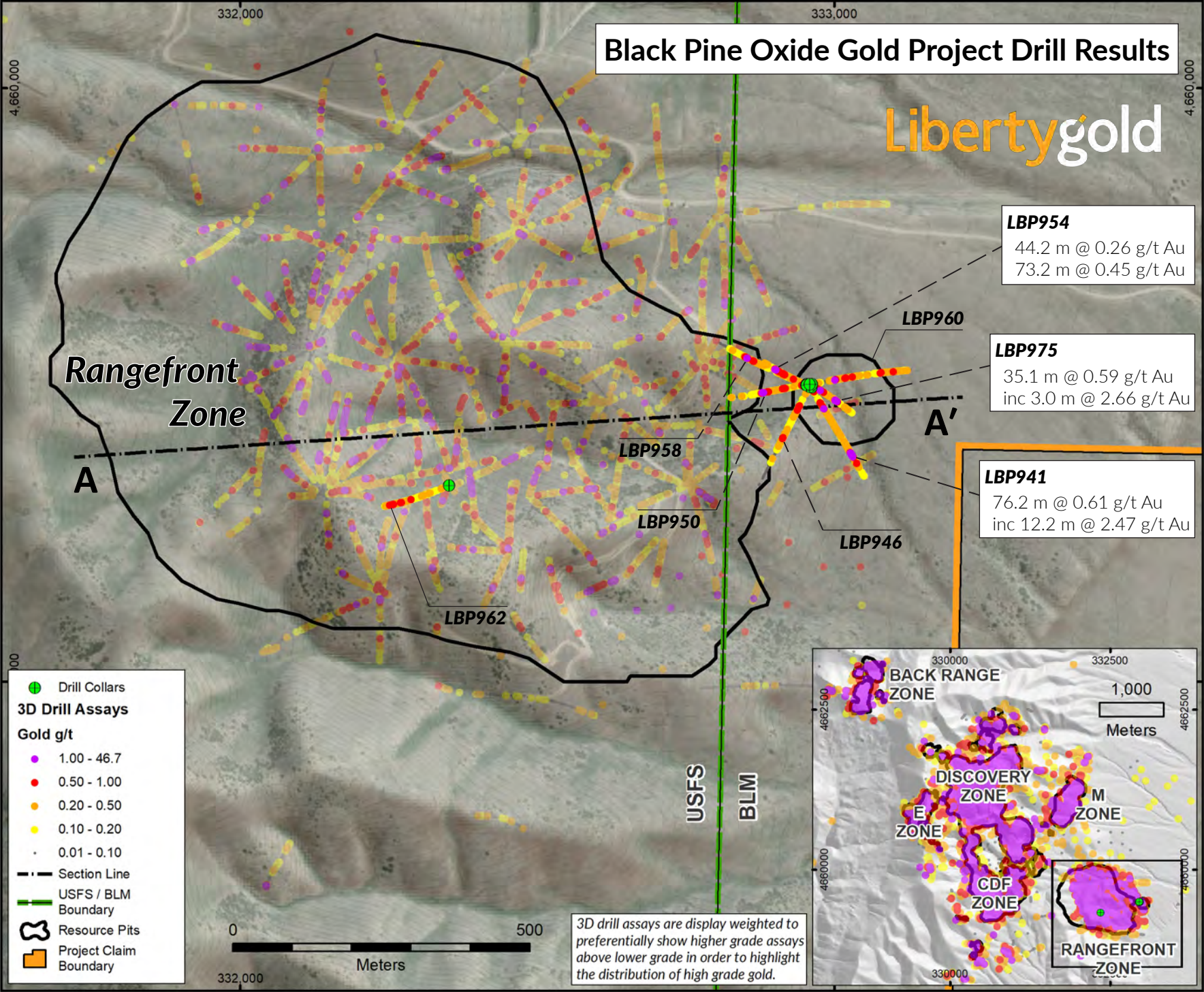
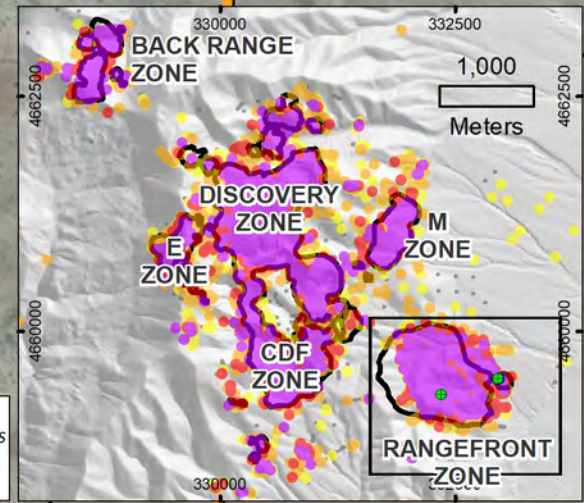
USFS
BLM

Legend

- Drill Collars
- 3D Drill Assays**
- Gold g/t**
- 1.00 - 46.7
- 0.50 - 1.00
- 0.20 - 0.50
- 0.10 - 0.20
- 0.01 - 0.10
- Section Line
- USFS / BLM Boundary
- Resource Pits
- Project Claim Boundary



3D drill assays are display weighted to preferentially show higher grade assays above lower grade in order to highlight the distribution of high grade gold.



Black Pine Oxide Gold Project Rangefront Zone Drill Results

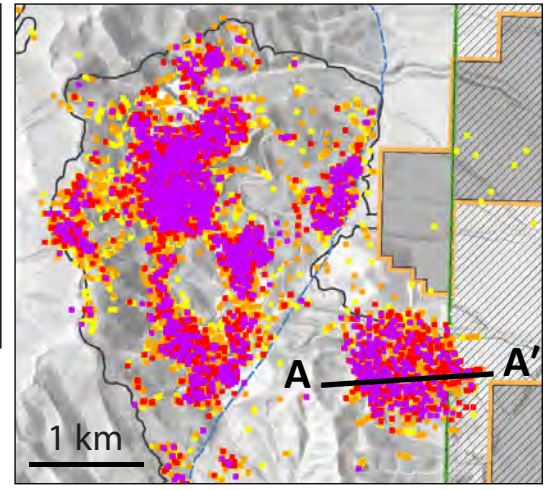
Drill Trace Legend
 / Current Release
 - Previous Release & Historic Trace

2023 Resource Pits
 \ - - - /

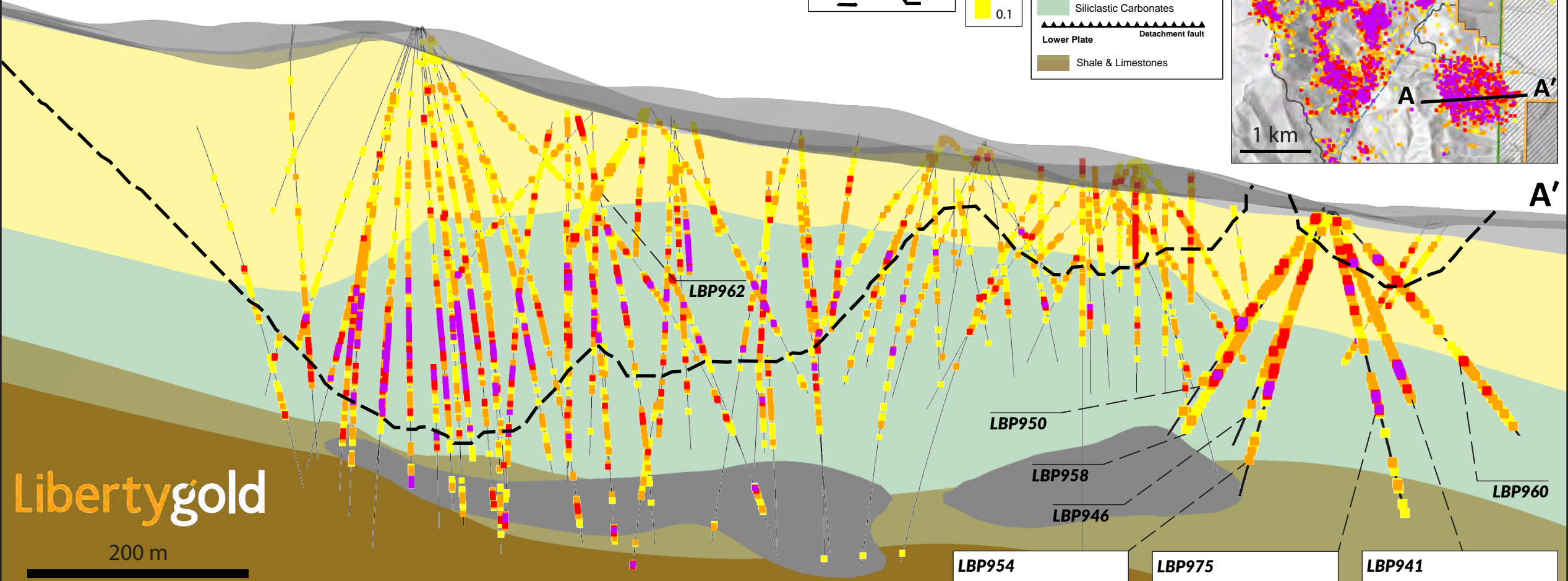
Drill Assay Au g/t
 1.0
 0.5
 0.2
 0.1

Black Pine Geology

- Carbonaceous Material
- Upper Plate
 - Sandstone and Siltstones
- Middle Plate
 - low angle thrust fault
 - Siiclastic Carbonates
- Lower Plate
 - Detachment fault
 - Shale & Limestones



A



Libertygold

200 m

Looking north
200 metre-wide section

LBP954
 44.2 m @ 0.26 g/t Au
 73.2 m @ 0.45 g/t Au

LBP975
 35.1 m @ 0.59 g/t Au
 inc 3.0 m @ 2.66 g/t Au

LBP941
 76.2 m @ 0.61 g/t Au
 inc 12.2 m @ 2.47 g/t Au