



Table 1  
Summary of Highlights

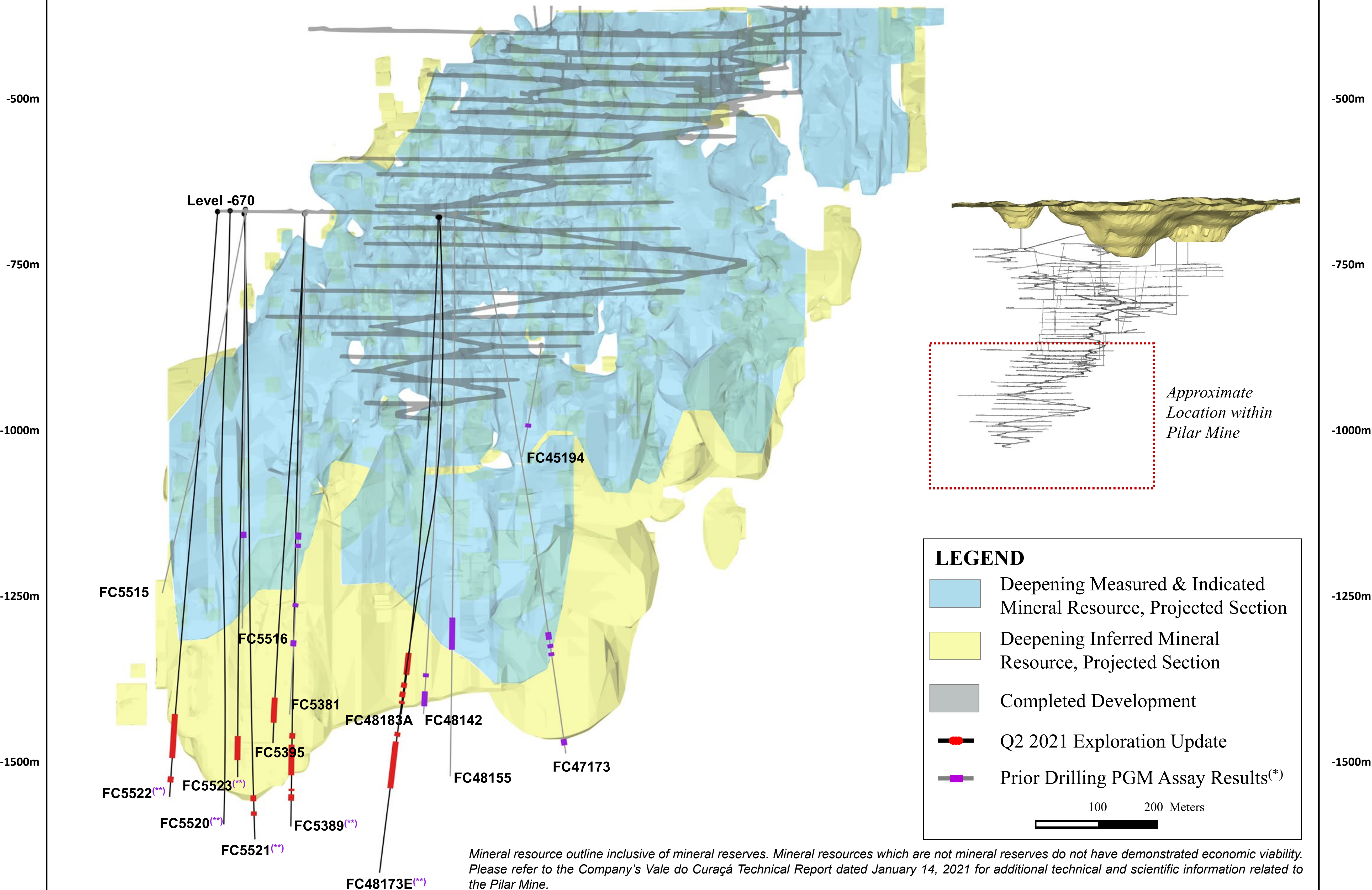
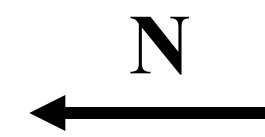
Mine / District	Target / System	Estimated Zone / Exploration Target Dimensions	Highlight Intercept(s)	Significance
<b><u>MCSA, In-Mine and Near-Mine Exploration Programs</u></b>				
Pilar Mine	Deepening Extension	900m x 600m x 20m <i>New “Superpod” style mineralization identified over 350m in strike length at depth, remains open</i>	<b>FC5522:</b> 67.0m @ 9.21% Cu incl. 21.0m @ 14.14% Cu <b>FC5523:</b> 35.2m @ 5.51% Cu incl. 9.0m @ 8.60% Cu <b>FC5395:</b> 38.1m @ 3.60% Cu incl. 10.1m @ 5.19% Cu <b>FC5389:</b> 46.6m @ 4.98% Cu incl. 31.2m @ 6.94% Cu <b>FC48173E:</b> 72.1m @ 2.81% Cu incl. 14.0m @ 4.40% Cu <b>FC48183A:</b> 32.8m @ 5.75% Cu incl. 10.4m @ 8.97% Cu	New drilling at the deepest known limits of the previously defined 2020 Inferred mineral resource shell is highlighted by some of the best results drilled by the Company in the Curaçá Valley to date. The high-grade “Superpod” zone, has been delineated over 350m in strike length, over a down-dip distance of approximately 200 meters and the zone remains open. Apparent thickening within the zone is in excess of ~30m compared to modeled thicknesses of 10m to 15m, indicating potential for increased thickening of mineralization to depth.
Vermelhos Mine	Extensions beneath the Vermelhos Mine	<i>New drilling, mineralization remains open along strike and to depth</i>	<b>FVS-1253:</b> 5.7m @ 3.38% Cu	New intercept located ~125m beneath the developed infrastructure of the mine.
	Near-development Extensions within the Vermelhos Mine	27m extension of Toboggan orebody <i>(Extension of mineralization adjacent to mine infrastructure)</i>	<b>FVS-999:</b> 27.0m @ 6.86% Cu incl. 3.8m @ 16.29% Cu	Extension of high-grade continuity at the eastern edge of the Toboggan orebody previously modeled as narrow lenses, adjacent to existing infrastructure.
<b><u>MCSA, Past Producing Mine Re-Evaluation</u></b>				
Surubim District	Lagoa da Mina	100m x 45m x 70m <i>open north down plunge and to depth</i>	<b>FLM-77:</b> 32.2m @ 2.69% Cu incl. 6.0m @ 4.00% Cu	North-plunging high-grade lens up to 4% Cu, ~70 meters beneath the limits of the historic open pit. New intercept represents a 30-meter step-out hole from previously released high-grade intercept.
	Surubim Mine	<i>New drilling, mineralization remains open along strike and to depth</i>	<b>FS-GH007:</b> 7.2m @ 2.01% Cu incl. 3.0m @ 3.07% Cu	New drilling, ~150m beneath the historic open pit, approximately 275m south from previously released high-grade intercept.
<b><u>MCSA, Platinum Group Metal Evaluation</u></b>				
Pilar District	Deepening Extension	<i>Enriched PGM zone remains open</i>	<b>FC5389:</b> 1.0 m @ 0.35% Cu and 6.44 gpt 3PGE+Au	Enriched PGM zone containing 1.46 gpt Pd, 4.28 gpt Pt, and 0.70 gpt Rh over 1.0m. Intercept located ~23 meters downhole from the high-grade copper intercept within the same drillhole.
Surubim District	Surubim Mine	<i>Enriched PGM zone remains open</i>	<b>FS-GH006:</b> 16.5m @ 1.27% Cu and 0.52 gpt 3PGE+Au incl. 3.0m @ 2.86% Cu, and 0.62 gpt 3PGE+Au	Enriched PGM zone ~25 meters beneath the bottom of the Surubim Mine, and ~75 meters west of the new high-grade copper intercept in hole FS-GH007.
<b><u>NX Gold Mine Highlights</u></b>				
NX Gold Mine <i>(In-Mine and Near-Mine Program)</i>	Santo Antonio Vein Extension	400m x 400m x 5m <i>Open to depth</i>	<b>SA94A:</b> 9.0m @ 22.66 gpt Au	Best drill hole drilled in the history of the NX Gold Mine, located approximately 10 meters beyond the limit of the 2020 Inferred mineral resource shell and 45 meters down-plunge from closest intercept.
	Matinha Vein Extension	<i>New drilling, mineralization remains open along strike and to depth</i>	<b>MAT20A:</b> 2.8m@ 19.73 gpt Au	New vein extension at depth, approximately 600m down-plunge from the previously defined limits of the Matinha Vein.
NX Gold Mine <i>(Regional Program)</i>	Cobra System	<i>~5km system strike length</i>	<b>SC01:</b> 1.0m @ 6.23 gpt Au, and 0.4m @ 2.55 gpt Au	New gold-bearing system, located ~1.2km northeast of the NX Gold Mine
	Mata Verde System	<i>~10.5km system strike length</i>	<b>MTV10:</b> 0.5m @ 20.20 gpt Au <b>MTV16:</b> 2.0m @ 1.60 gpt Au	New gold-bearing system, located ~25km east-northeast of the NX Gold Mine

**Note:** Please review Table 1 in conjunction with the complete July 7, 2021 press release including, but not limited to, associated results tables, footnotes and figures for additional context including for previously released drill holes, where applicable.



# Figure 1

## Deepening Extension, North-South Long Section



### LEGEND

- Deepening Measured & Indicated Mineral Resource, Projected Section
  - Deepening Inferred Mineral Resource, Projected Section
  - Completed Development
  - Q2 2021 Exploration Update
  - Prior Drilling PGM Assay Results<sup>(\*)</sup>
- 100    200 Meters

Mineral resource outline inclusive of mineral reserves. Mineral resources which are not mineral reserves do not have demonstrated economic viability. Please refer to the Company's Vale do Curaçá Technical Report dated January 14, 2021 for additional technical and scientific information related to the Pilar Mine.

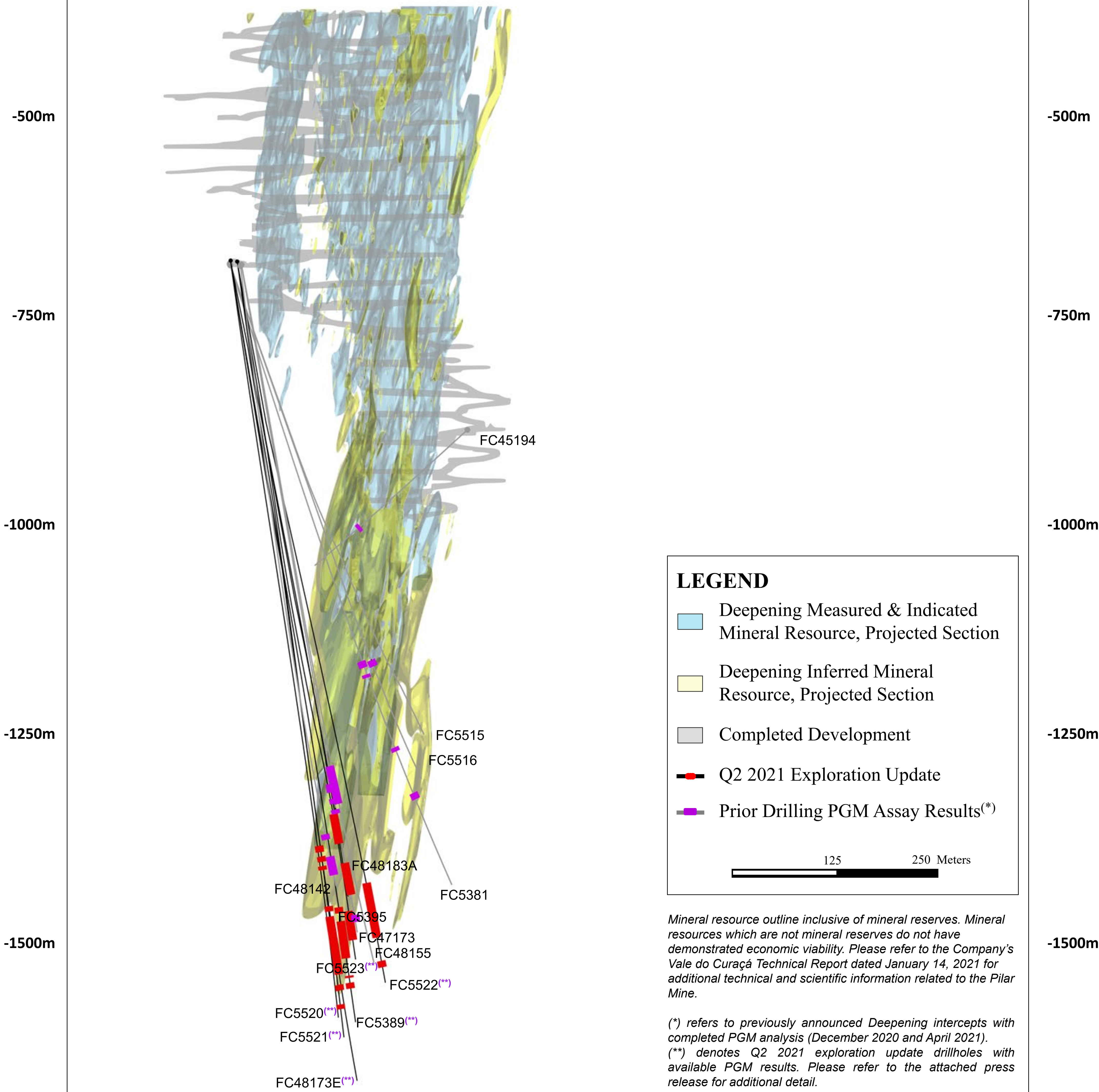
(\*) refers to previously announced Deepening intercepts with completed PGM analysis (December 2020 and April 2021).

(\*\*) denotes Q2 2021 exploration update drillholes with available PGM results. Please refer to the attached press release for additional detail.



Figure 2  
Deepening Extension, West-East Composite Section

W  
←



**LEGEND**

- Deepening Measured & Indicated Mineral Resource, Projected Section
- Deepening Inferred Mineral Resource, Projected Section
- Completed Development
- Q2 2021 Exploration Update
- Prior Drilling PGM Assay Results(\*)

125 250 Meters

Mineral resource outline inclusive of mineral reserves. Mineral resources which are not mineral reserves do not have demonstrated economic viability. Please refer to the Company's Vale do Curaçá Technical Report dated January 14, 2021 for additional technical and scientific information related to the Pilar Mine.

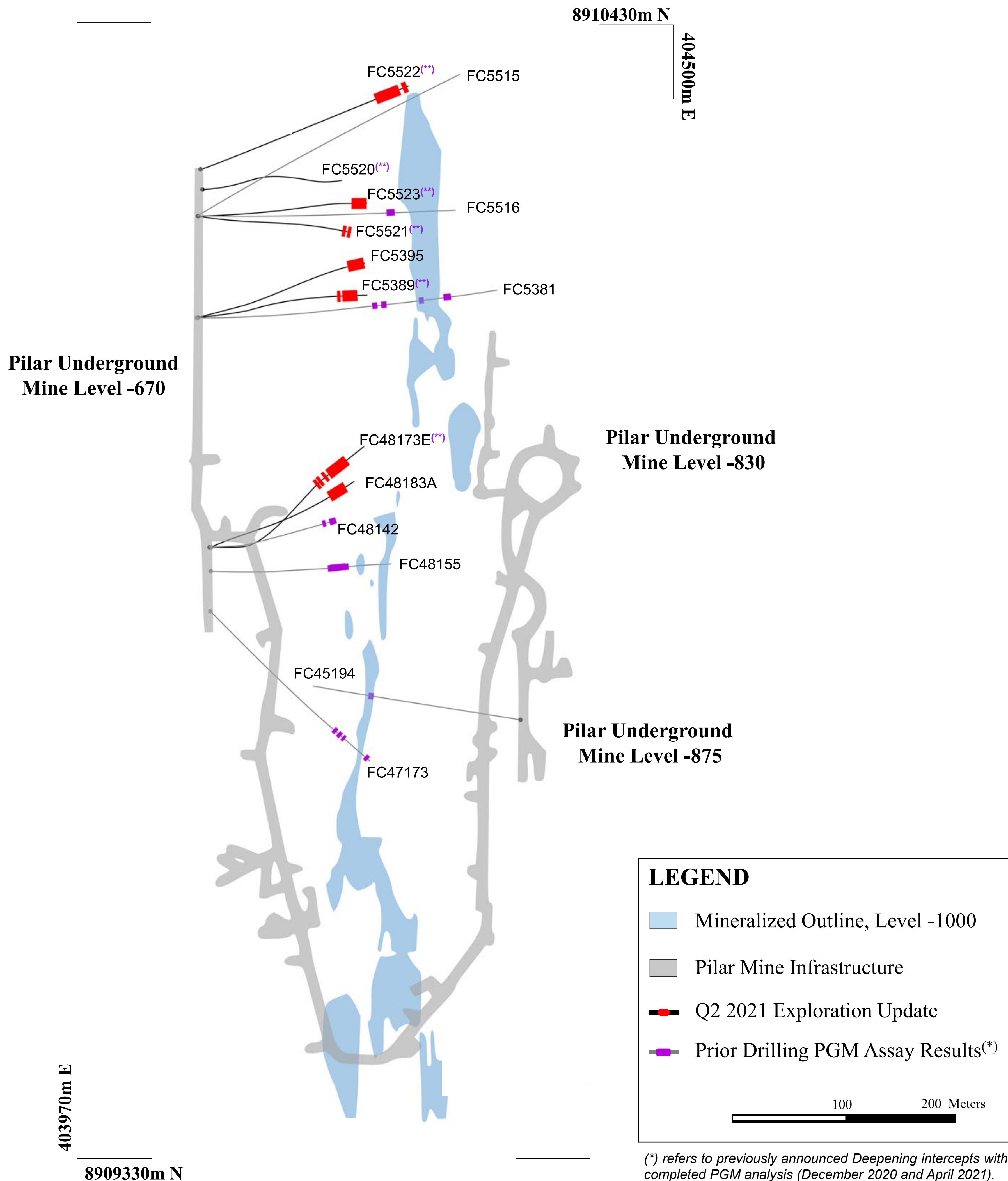
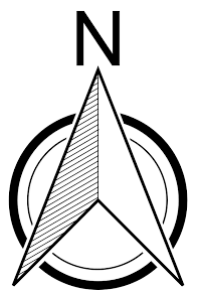
(\*) refers to previously announced Deepening intercepts with completed PGM analysis (December 2020 and April 2021).  
(\*\*) denotes Q2 2021 exploration update drillholes with available PGM results. Please refer to the attached press release for additional detail.



# Figure 3

## Pilar Mine, Deepening Extension

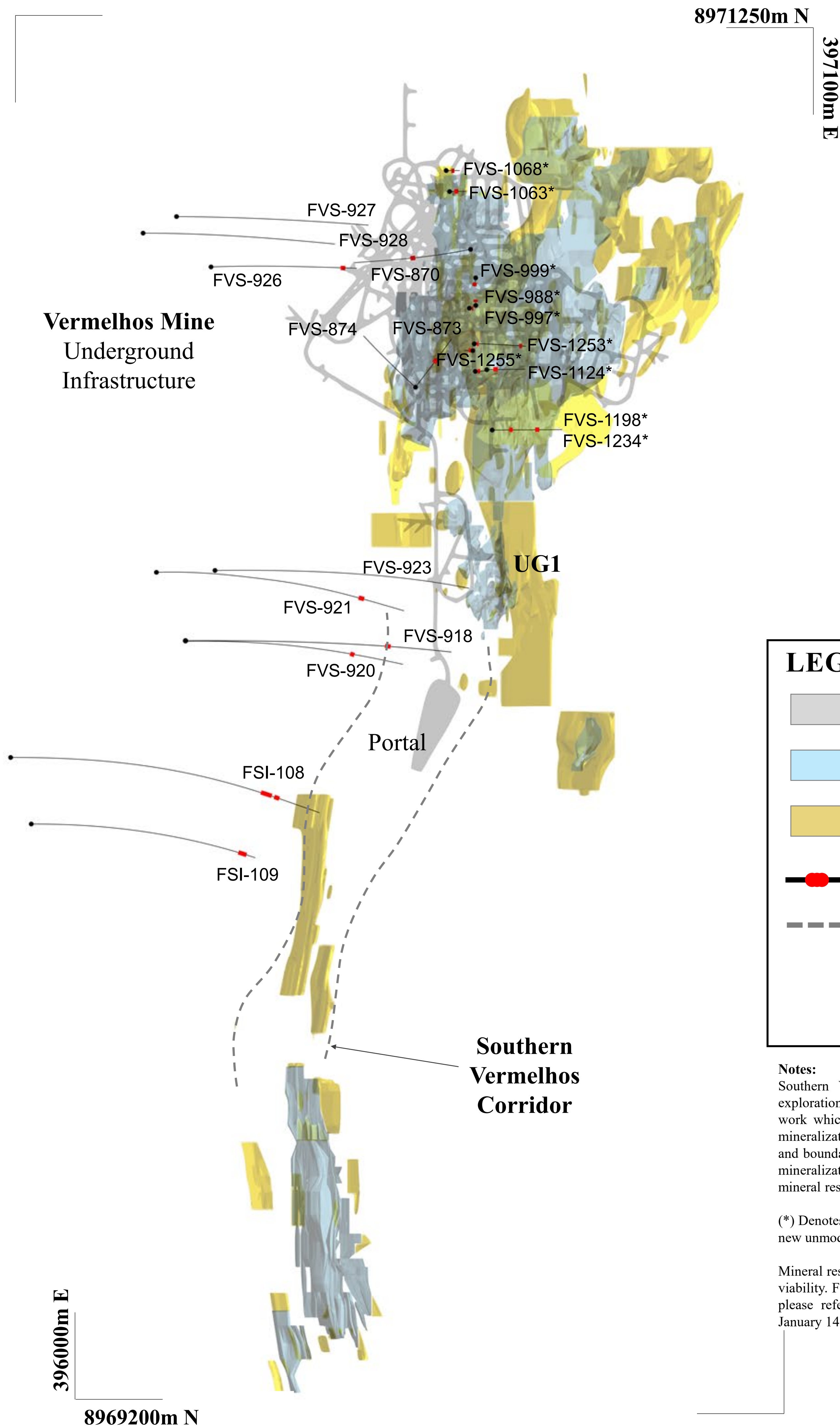
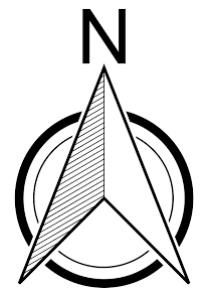
*(Drilling From Level -670, -875)*



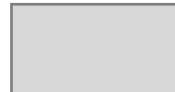






# Figure 4

## Vermelhos Main/East Zone & Siriema Drilling, Plan View



### LEGEND

-  Completed Development, Vermelhos Mine
-  Surface Projection of Vermelhos & Siriema Measured & Indicated Mineral Resource
-  Surface Projection of Vermelhos & Siriema Inferred Mineral Resource
-  Q2 2021 Exploration Update
-  Interpreted Southern Vermelhos Corridor Boundary

150 300 Meters

#### Notes:

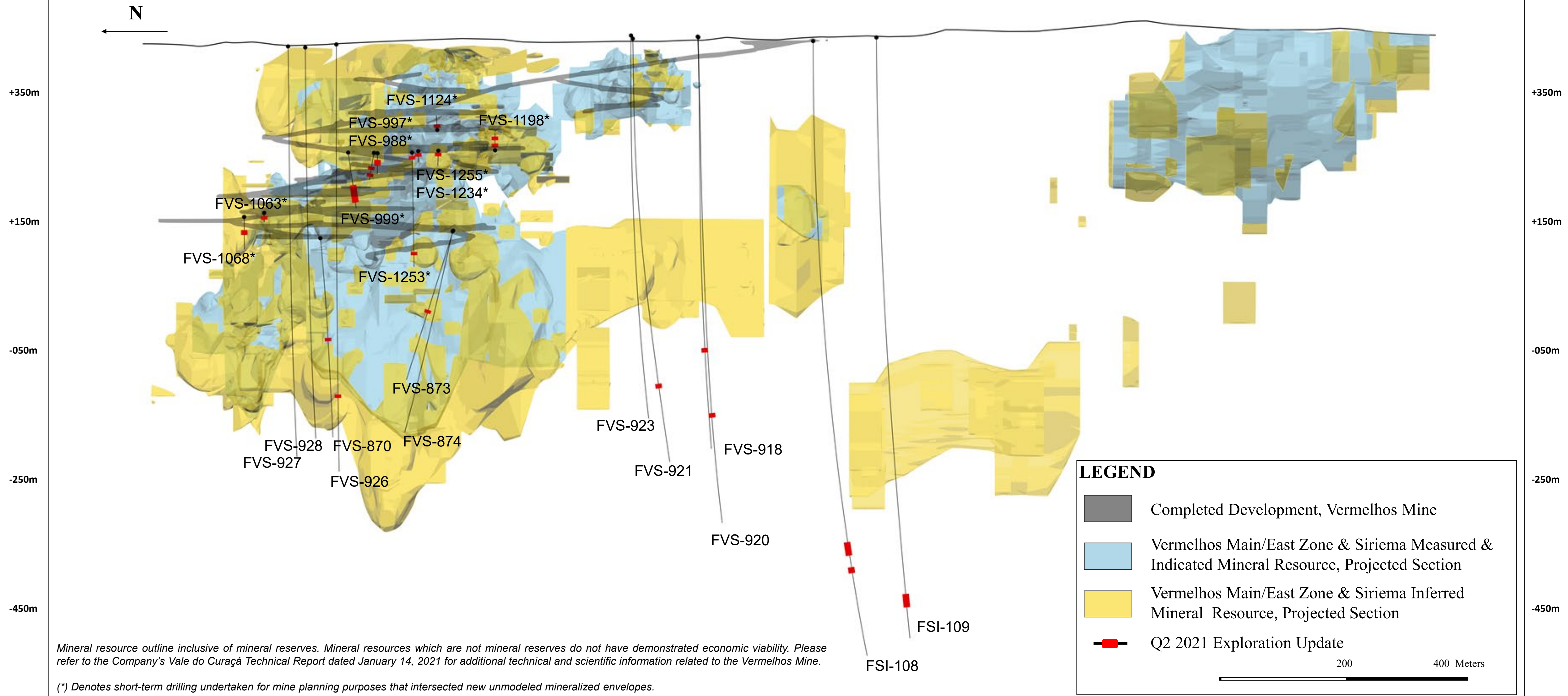
Southern Vermelhos Corridor projection shown to demonstrate future area of exploration within the Vermelhos District. The projection is based on data compilation work which includes review of geological controls, structural analysis and copper mineralization identified during the Company's technical programs. The interpretation and boundary limits do not imply continuity of mineralization, or actual thickness of mineralization which has yet to be defined. Mineral resources shown inclusive of mineral reserves.

(\*) Denotes short-term drilling undertaken for mine planning purposes that intersected new unmodeled mineralized envelopes.

Mineral resources which are not mineral reserves do not have demonstrated economic viability. For additional information about the current mineral reserves of these zones please refer to the Company's Vale do Curaçá Property Technical Report dated January 14, 2021.



**Figure 5**  
Vermelhos Main/East Zone & Siriema, North-South Long Section

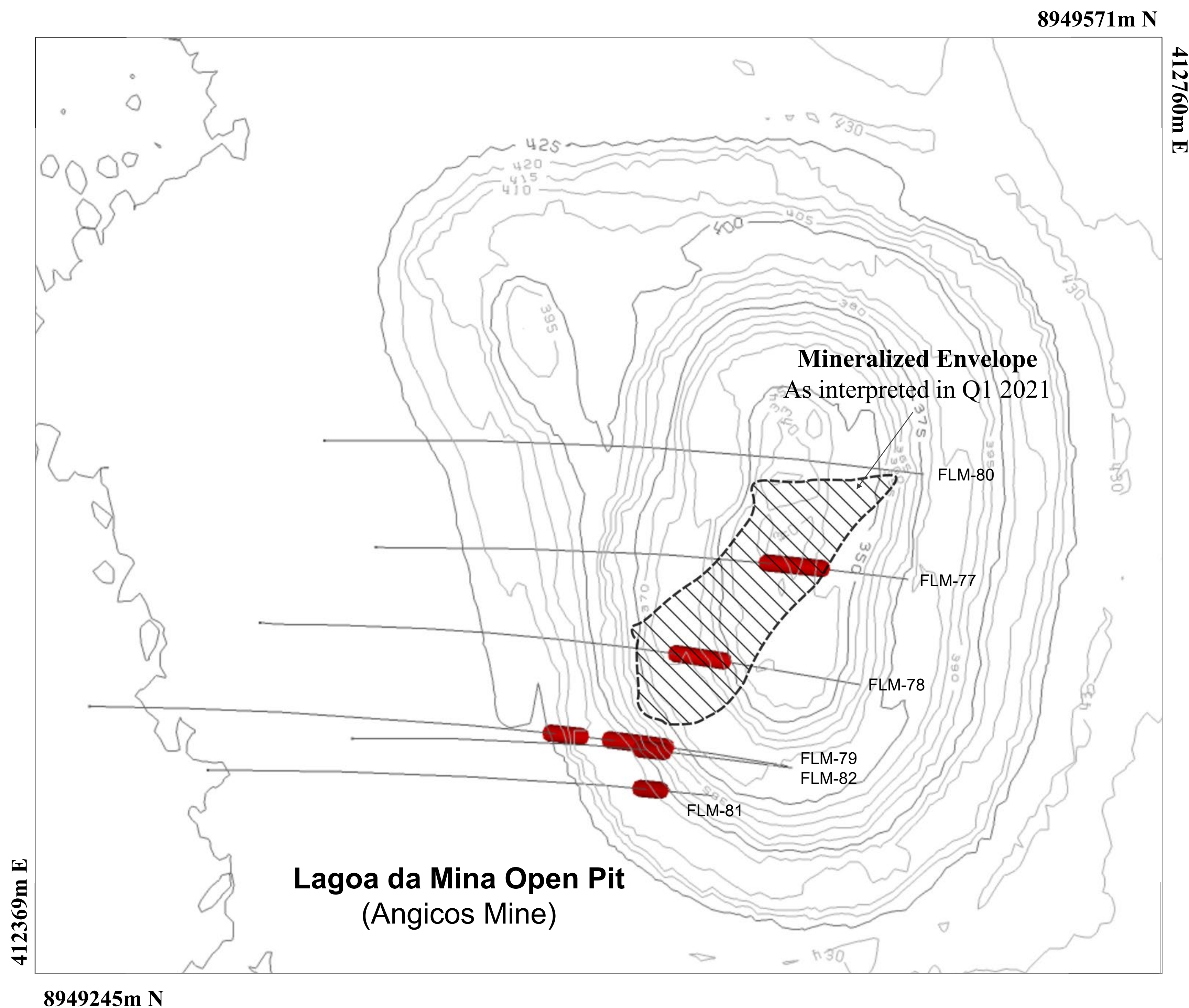




# Figure 6

## Lagoa da Mina, Surubim District

*(Drilling From Surface)*




### LEGEND

 Interpreted Mineralized Envelope,  
Surface Projection(\*)

 Q2 2021 Exploration Results

50 100 Meters



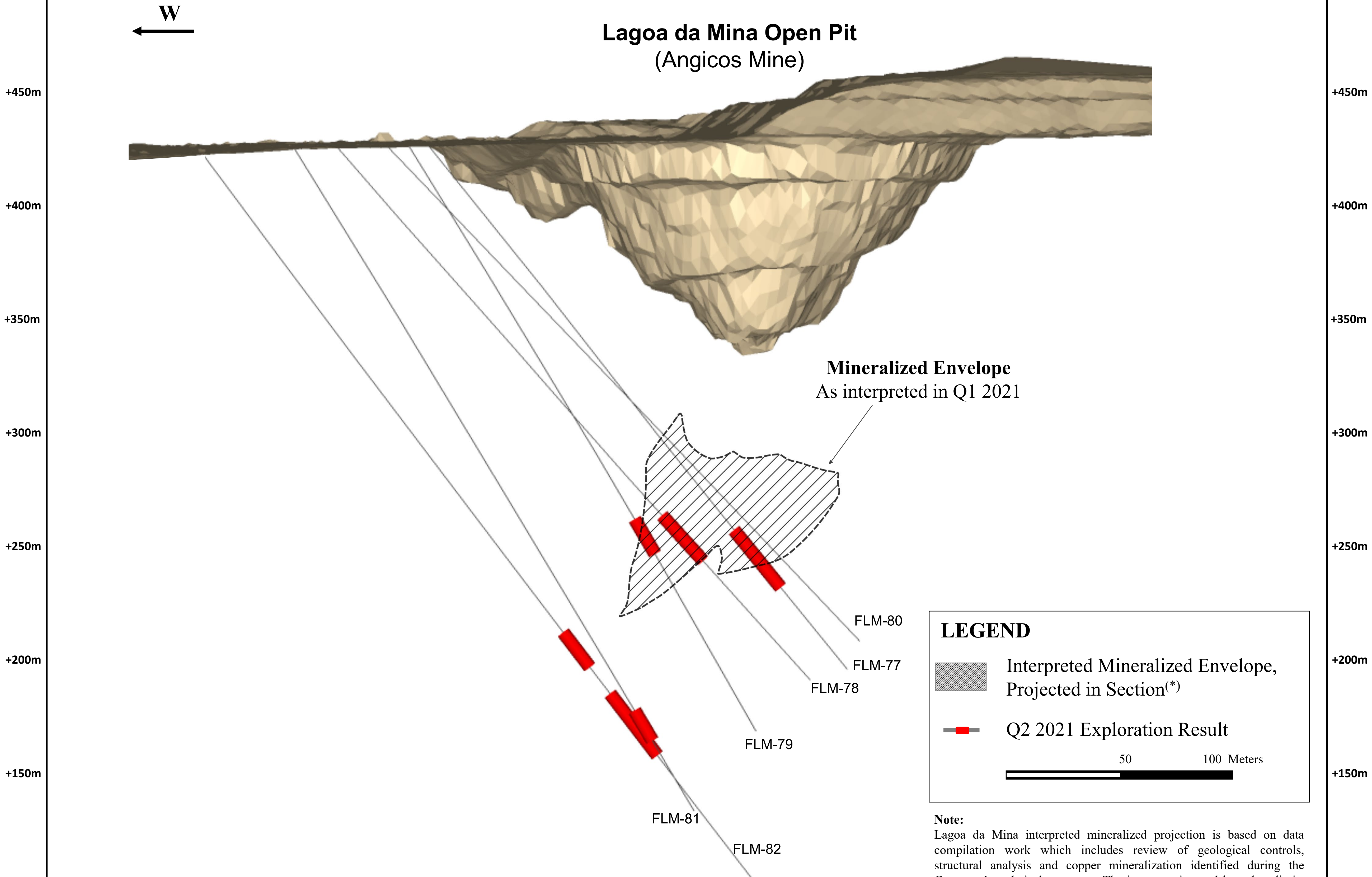
#### Notes:

Lagoa da Mina interpreted mineralized projection is based on data compilation work which includes review of geological controls, structural analysis and copper mineralization identified during the Company's technical programs. The interpretation and boundary limits do not imply continuity of mineralization, or actual thickness of mineralization which has yet to be defined. (\*) refers to the interpreted mineralized envelope surface projection as of Q1 2021.



# Figure 7

## Lagoa da Mina, Surubim District, West-East Section



### LEGEND

 Interpreted Mineralized Envelope, Projected in Section<sup>(\*)</sup>

 Q2 2021 Exploration Result

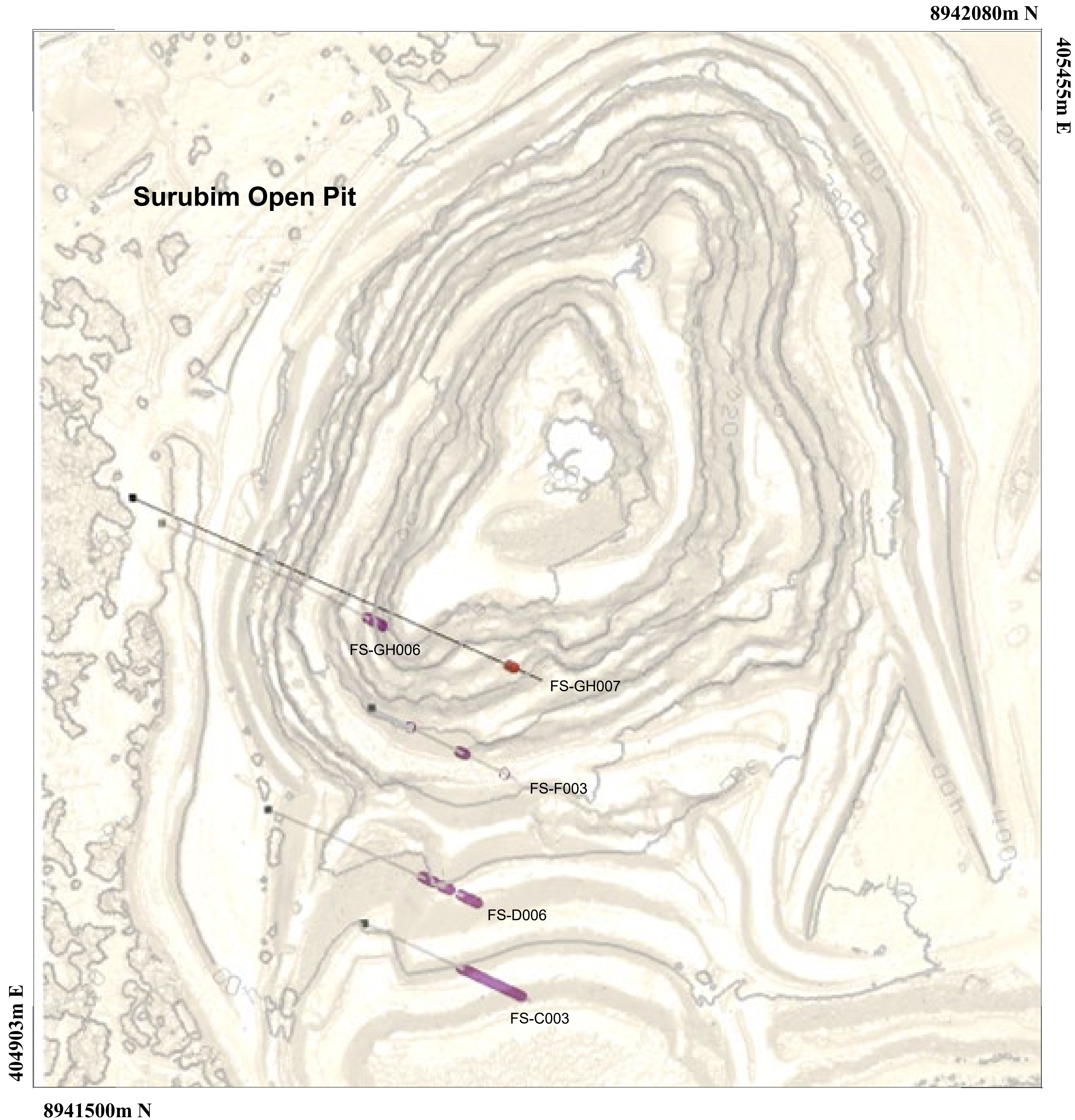
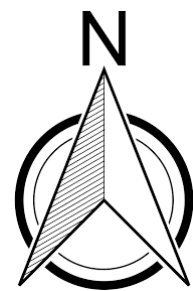
50 100 Meters

### Note:

Lagoa da Mina interpreted mineralized projection is based on data compilation work which includes review of geological controls, structural analysis and copper mineralization identified during the Company's technical programs. The interpretation and boundary limits do not imply continuity of mineralization, or actual thickness of mineralization which has yet to be defined. (\*) refers to the interpreted mineralized envelope projection as of Q1 2021.



**Figure 8**  
Surubim Mine, Surubim District  
(Drilling From Surface)



**LEGEND**

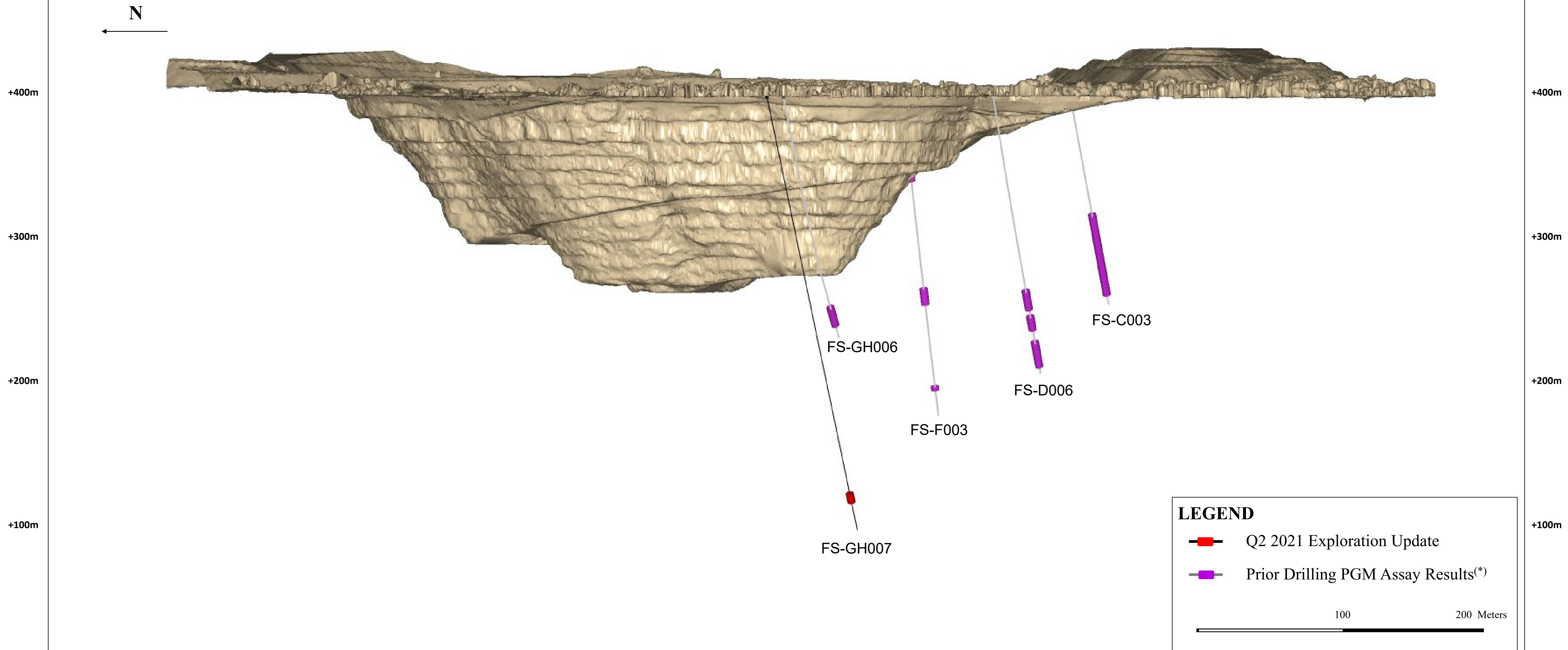
● Q2 2021 Exploration Results      ■ Prior Drilling PGM Assay Results<sup>(\*)</sup>

75      150 Meters

(\*) refers to previously announced intercepts with completed PGM analysis (December 2020 and April 2021).



**Figure 9**  
Surubim Mine, Surubim District, North-South Long Section

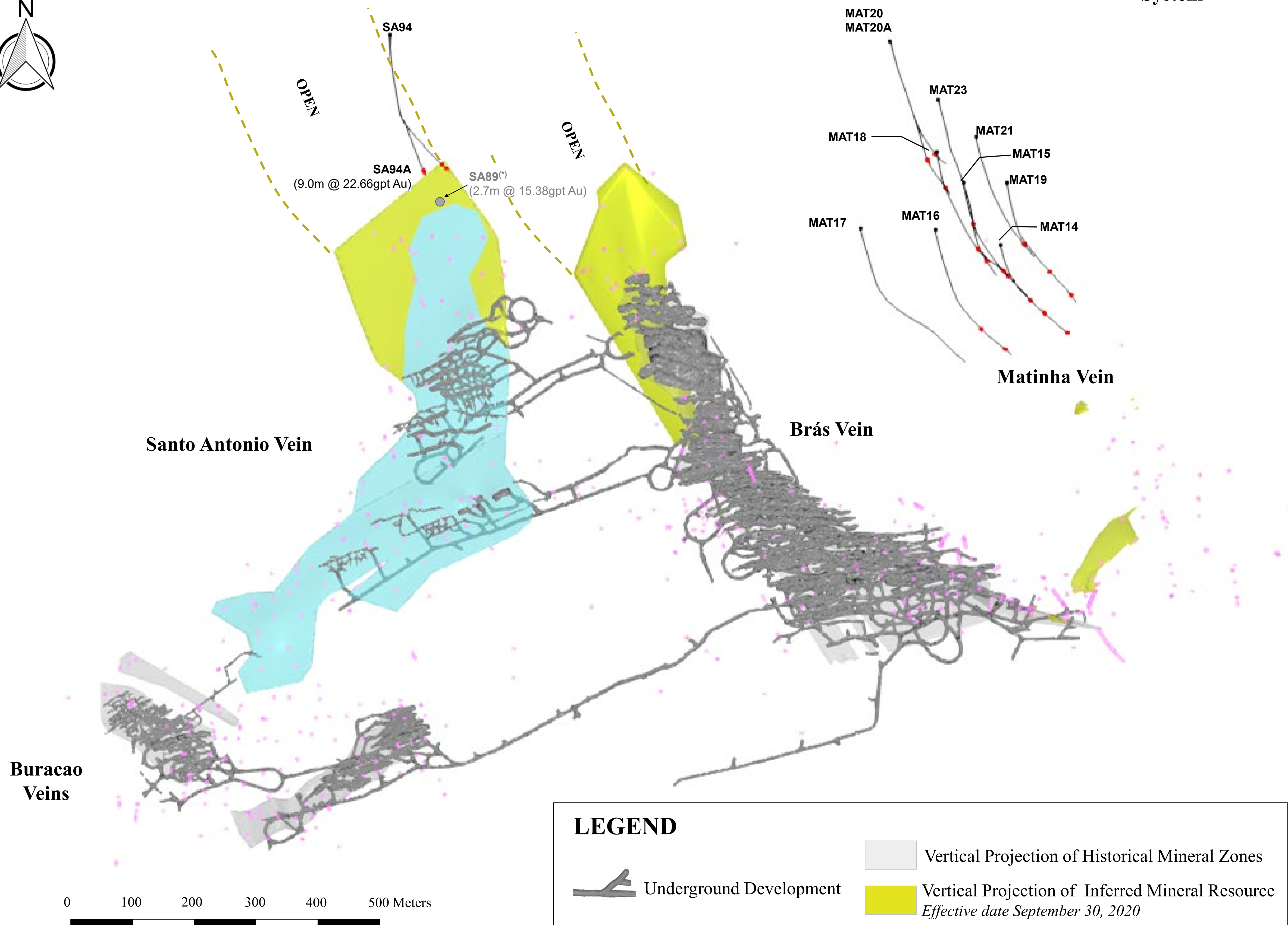
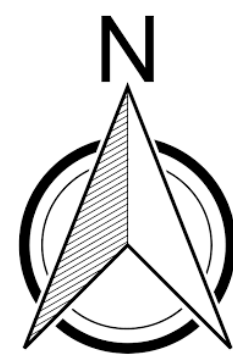


(\*) refers to previously announced intercepts with completed PGM analysis (December 2020 and April 2021).



**Figure 10**  
NX Gold Mine, Plan View

SC02  
SC01  
**Sovaco de Cobra  
System**



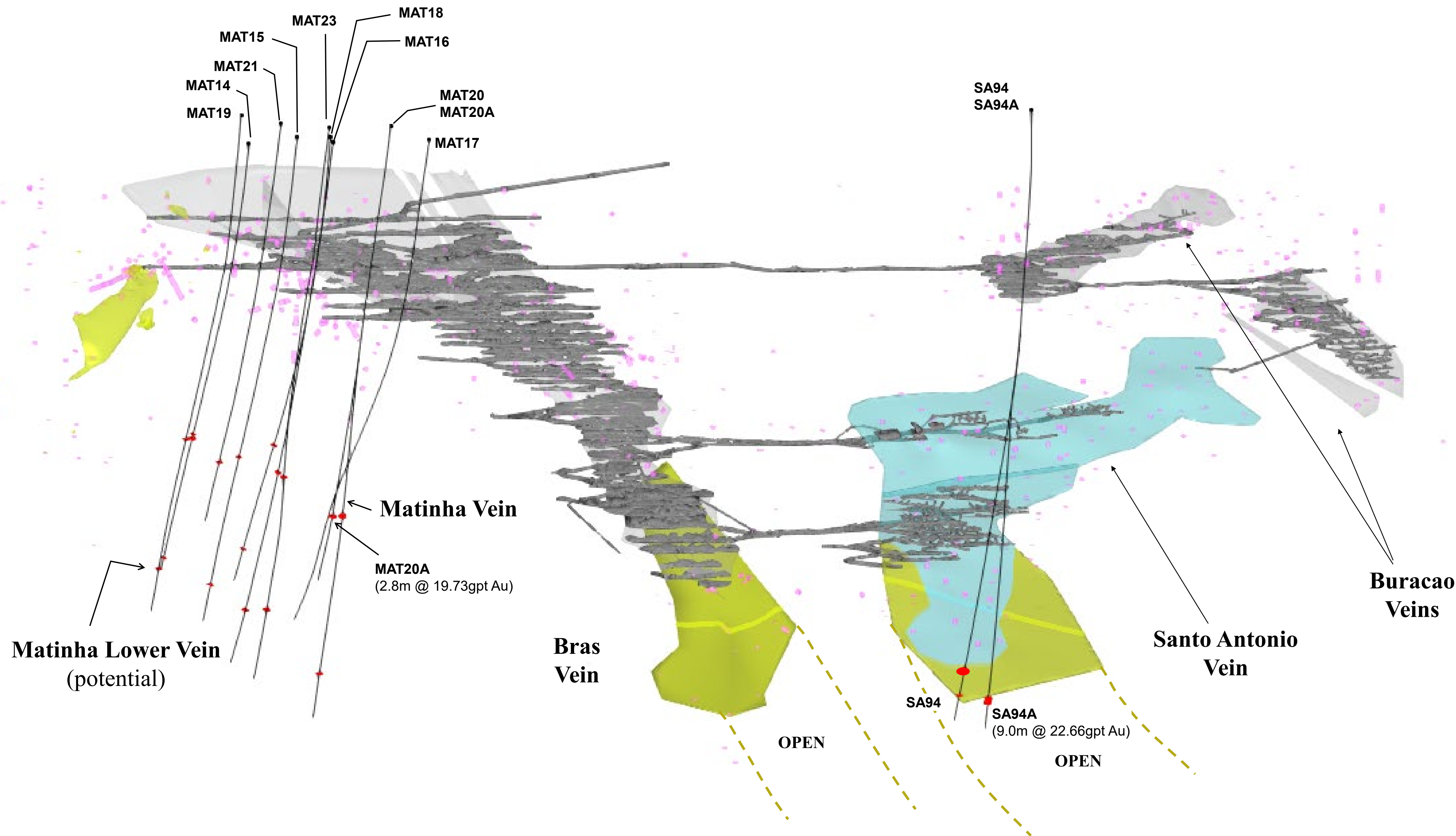
Mineral resource outline(s) inclusive of mineral reserves. Mineral resources which are not mineral reserves do not have demonstrated economic viability. Please refer to the Company's NX Gold Mine Technical Report dated January 8, 2021 for additional technical and scientific information related to the NX Gold Mine. (\*) denotes previously released hole, please refer to the Company's press release dated December 15, 2020.



# Figure 11

## NX Gold Mine, East-West Vertical Long Section

E  
←



### LEGEND

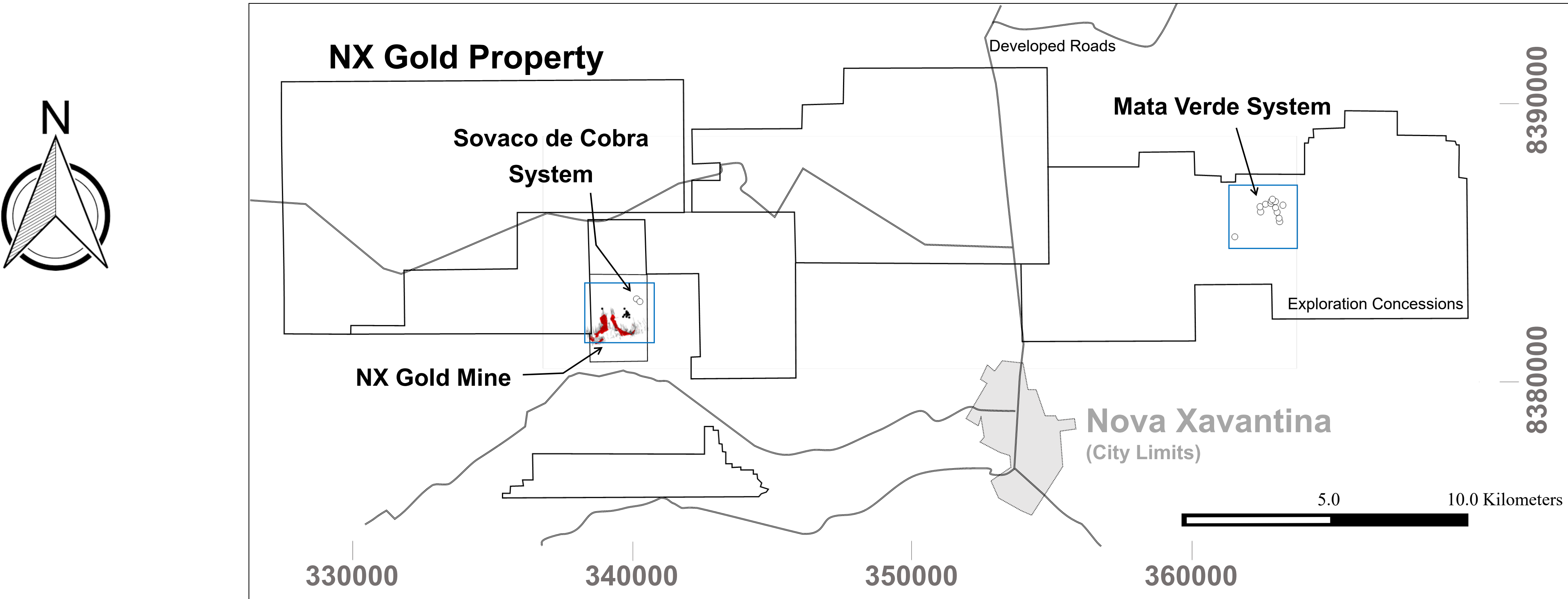
- Horizontal Projection of Historical Mineral Zones
- Horizontal Projection of Inferred Mineral Resource  
*Effective date September 30, 2020*
- Horizontal Projection of Indicated Mineral Resource  
*Effective date September 30, 2020*
- Previously announced vein intersection
- Underground Development
- Q1-Q2 2021 drill hole traces
- Q1-Q2 2021 New Vein Intersection

0 100 200 300 400 500 Meters

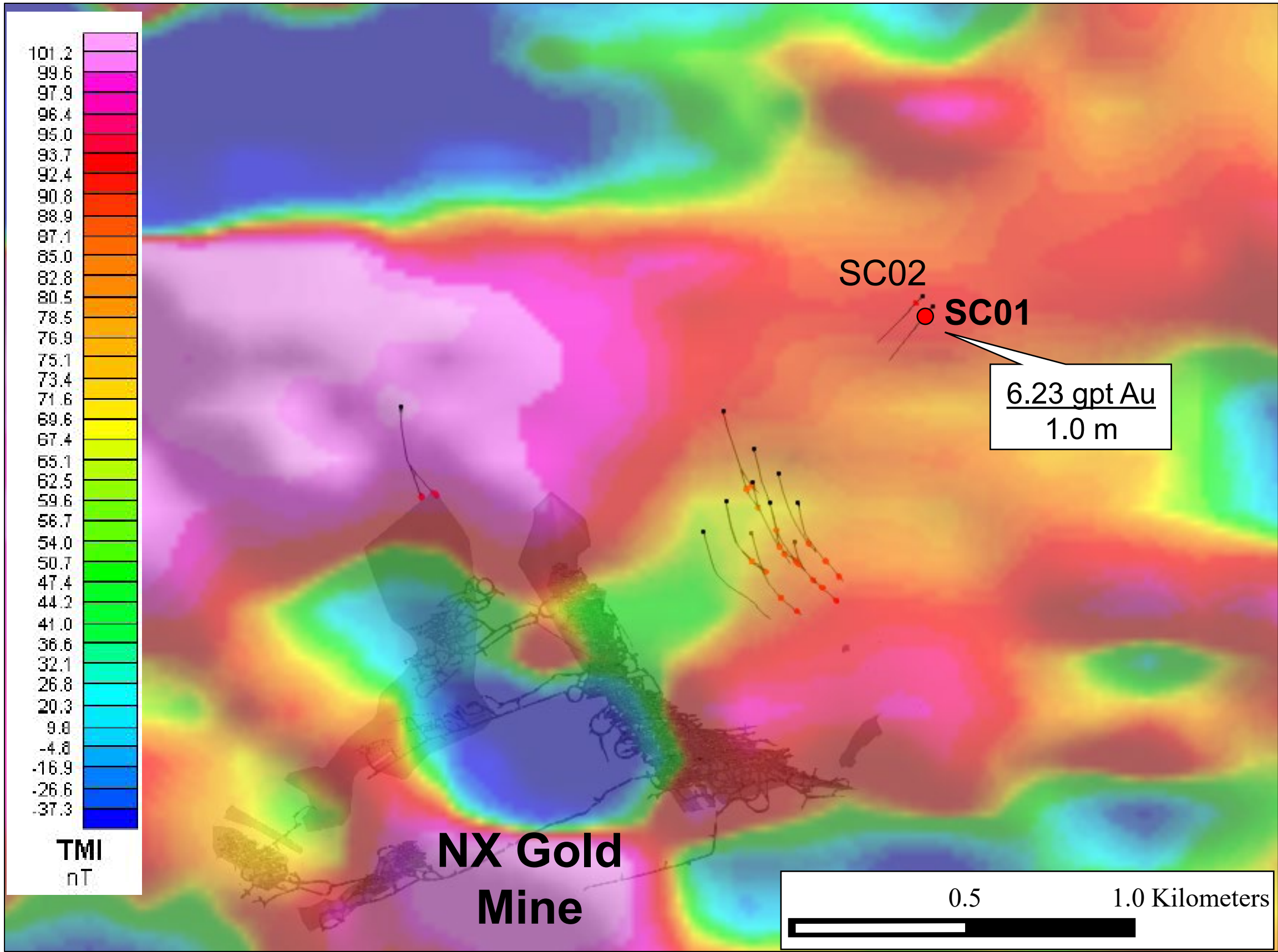
Mineral resource outline(s) inclusive of mineral reserves. Mineral resources which are not mineral reserves do not have demonstrated economic viability. Please refer to the Company's NX Gold Mine Technical Report dated January 8, 2021 for additional technical and scientific information related to the NX Gold Mine.



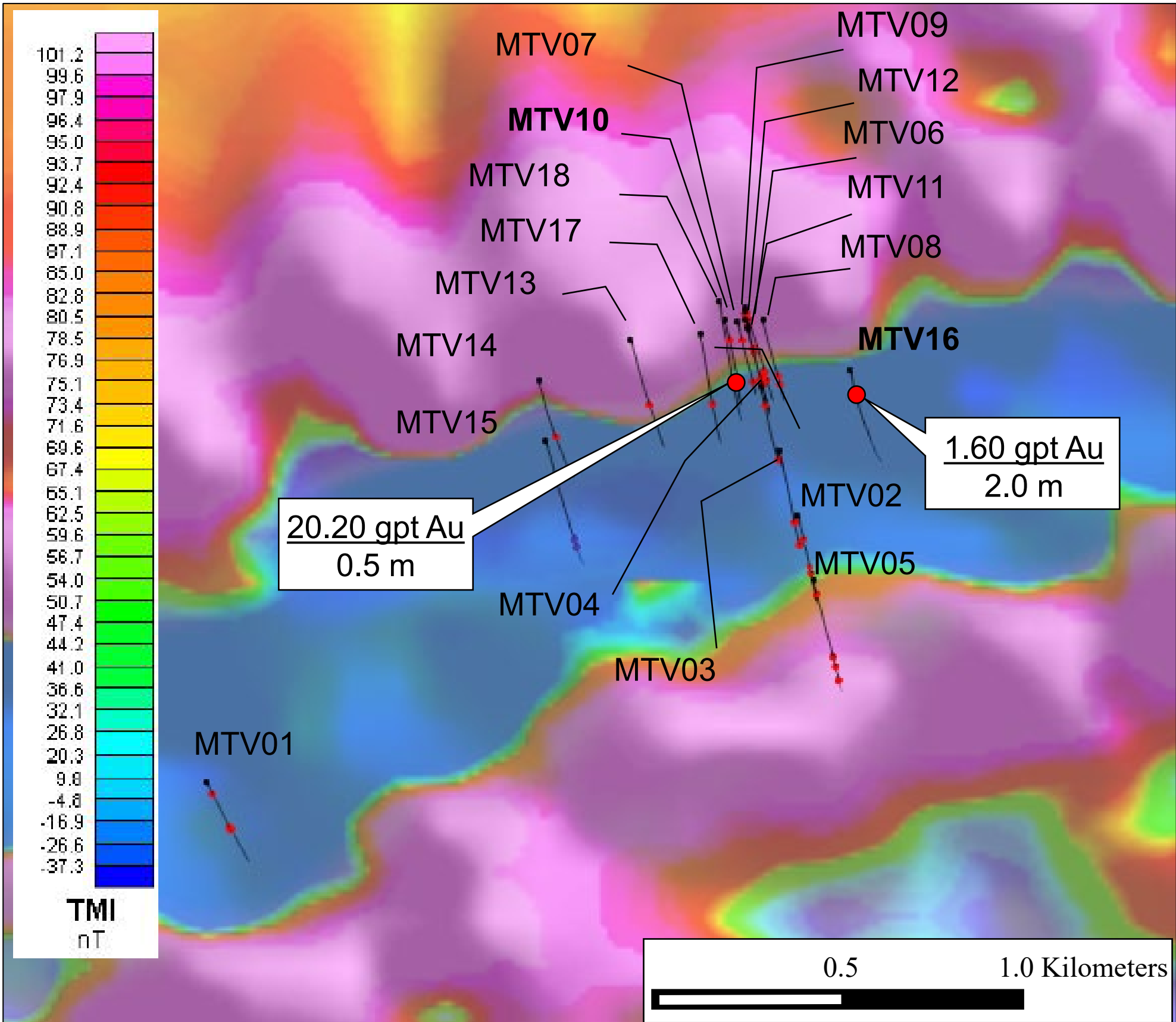
**Figure 12**  
NX Gold Mine Regional Results, Plan View



**Sovaco de Cobra Sector (Detail)**



**Mata Verde Sector (Detail)**



**LEGEND**



Underground Development



Q1-Q2 2021 drill hole traces



Q1-Q2 2021 New Vein Intersection